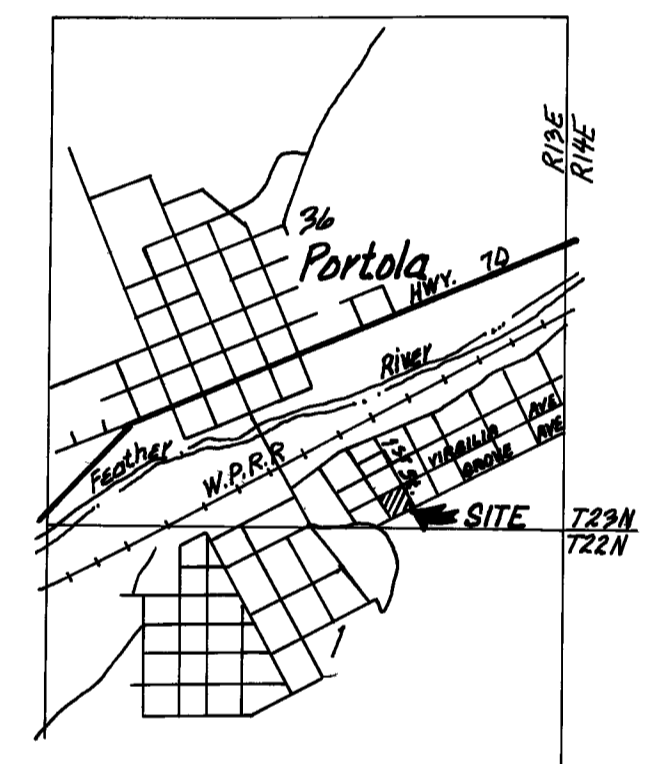


Basis of Bearing: The NE Right-of-Way of South Second Street shown as S 28° 56' 00" E per Map of Eastern Addition to Portola Townsite filed for Record June 19<sup>th</sup>, 1911.

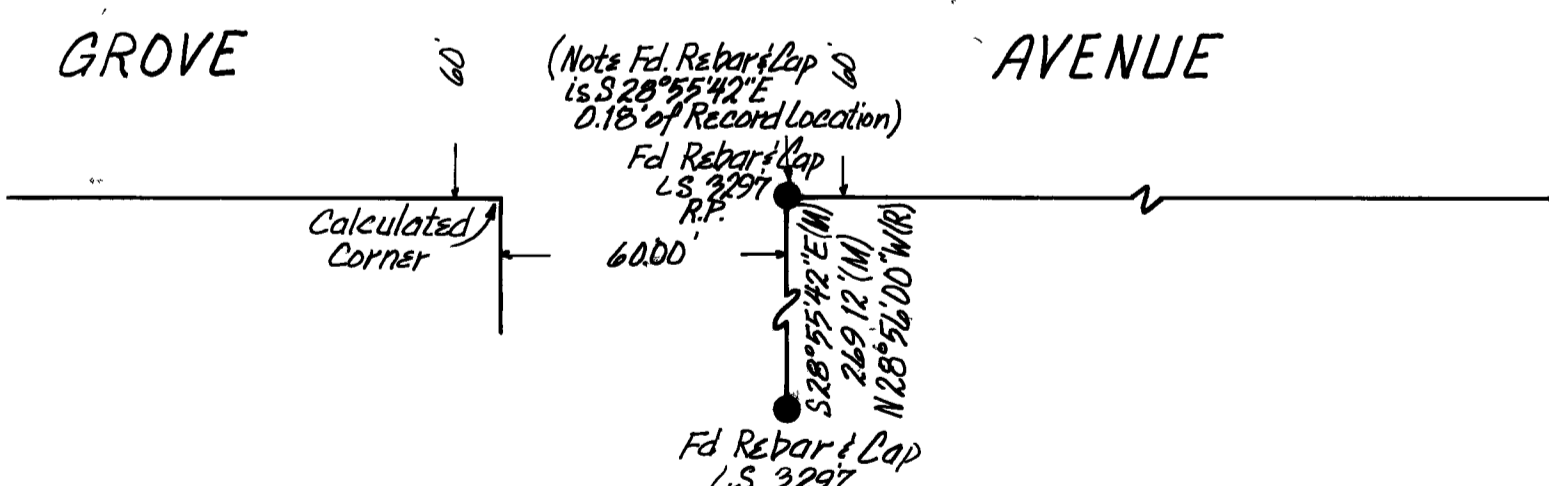
SCALE 1" = 40'



LOCATION MAP  
NTS

- LEGEND**
- Found Point as Noted
  - Set Rebar & Plastic Cap L.S. 2843
  - R Record
  - M Measured

(Note: Fd. Rebar & Cap is S 28° 55' 42" E 0.15' of Record Location)



**SURVEYOR'S CERTIFICATE**  
 This map correctly represents a survey made by me or under my direction in conformance with the requirements of the Land Surveyors Act at the request of Glen Sturdevant on May 29, 1929.

*John W. Hamby*  
 John W. Hamby LS 2843

**COUNTY SURVEYOR'S CERTIFICATE**  
 This map has been examined for conformance with the requirements of the Land Surveyors Act this 1<sup>st</sup> day of October, 1929.

*Lawrence J. Brock*  
 Lawrence J. Brock RCE 13528  
 Plumas County Surveyor

**RECORDERS CERTIFICATE**  
 Filed this 1<sup>st</sup> day of Oct, 1929, at 4:35 P.M. in Book 5 of Records of Surveys, at Page 76, at the request of the County Engineer.

Fee \$ 5.00  
 File No. 3185

*Ila Diggs*  
 Ila Diggs  
 County Recorder

By *Francis Nicol*  
 Francis Nicol  
 Deputy

RECORD OF SURVEY FOR  
**GLEN STURDEVANT**  
 BLOCK 19 EASTERN ADDITION TO PORTOLA, SE 1/4 OF SECTION 36 T.23 N. R.13E. M.D.B.&M. PLUMAS COUNTY, CALIFORNIA  
 JULY 25<sup>th</sup> 1929

JOHN W. HAMBY  
 Paradise, California  
 P.O. Box H.H.  
 (916) 877-6253

LICENSED LAND SURVEYOR  
 Portola, California  
 P.O. Box 842  
 (916) 832-5571

Sheet 1 of 1

BRUNING 44-132 40893