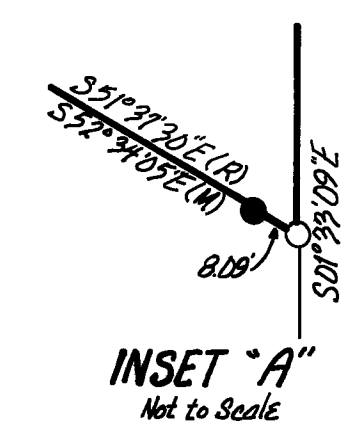
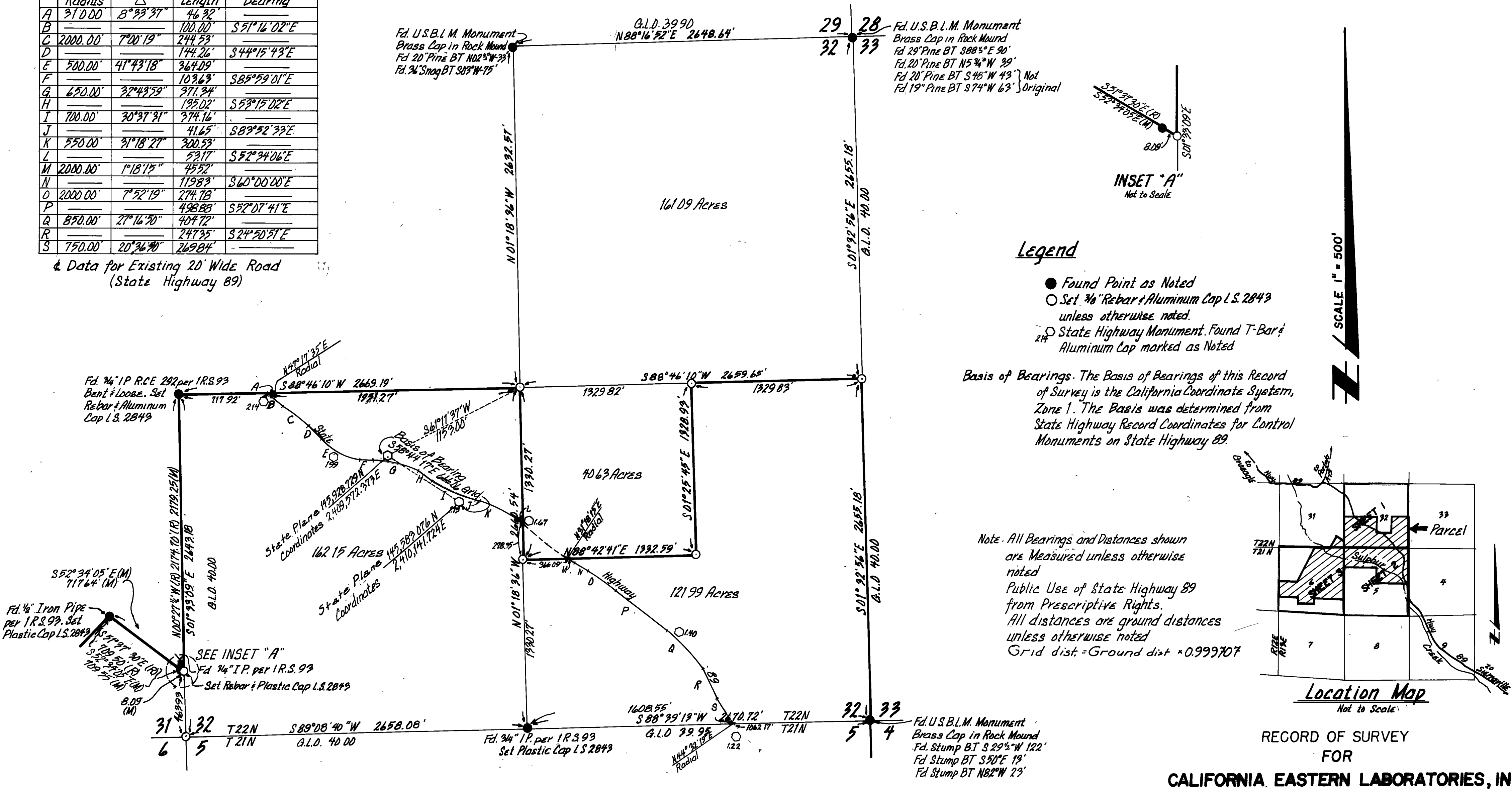


	Radius	Δ	Length	Bearing
A	31.00	8°33'37"	46.32'	
B			100.00'	S51°16'02"E
C	2000.00	7°20'19"	244.53'	
D			144.26'	S44°15'43"E
E	500.00	41°43'18"	364.09'	
F			103.63'	S85°59'01"E
G	650.00	32°49'59"	371.34'	
H			195.02'	S53°15'02"E
I	700.00	30°37'31"	374.16'	
J			41.65'	S83°52'33"E
K	550.00	31°18'27"	300.53'	
L			53.17'	S52°34'06"E
M	2000.00	1°18'15"	45.52'	
N			119.83'	S60°00'00"E
O	2000.00	7°52'19"	274.78'	
P			498.88'	S52°07'41"E
Q	850.00	27°16'20"	404.72'	
R			247.35'	S24°50'51"E
S	750.00	20°36'30"	269.84'	

& Data for Existing 20' Wide Road (State Highway 89)

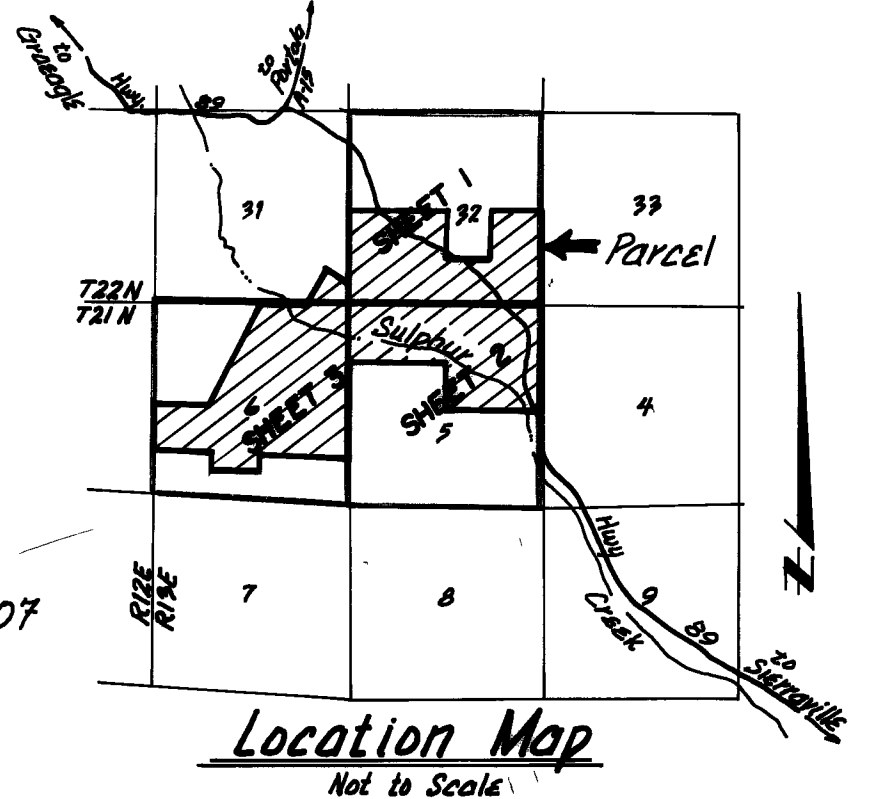


Legend

- Found Point as Noted
- Set 3/4" Rebar & Aluminum Cap L.S. 2843 unless otherwise noted.
- State Highway Monument, Found T-Bar & Aluminum Cap marked as Noted

Basis of Bearings. The Basis of Bearings of this Record of Survey is the California Coordinate System, Zone 1. The Basis was determined from State Highway Record Coordinates for Control Monuments on State Highway 89.

Note. All Bearings and Distances shown are Measured unless otherwise noted
Public Use of State Highway 89 from Prescriptive Rights.
All distances are ground distances unless otherwise noted
Grid dist. = Ground dist * 0.999707



REGORD OF SURVEY FOR CALIFORNIA EASTERN LABORATORIES, INC.

PORTIONS OF SEC. 31 & 32, T22N, R13E., & SECTIONS 5 & 6, T21N., R13E M.D.B.&M. PLUMAS COUNTY, CALIFORNIA

SURVEYOR'S CERTIFICATE
This map correctly represents a survey made by me or under my direction in conformance with the requirements of the Land Surveyors Act at the request of Hugh White March, 1972.

John W. Hamby
John W. Hamby LS 2843

COUNTY SURVEYOR'S CERTIFICATE
This map has been examined for conformance with the requirements of the Land Surveyors Act this 27th day of February, 1980.

John Conaway
Sierra County Surveyor

Lawrence J. Brock
Lawrence J. Brock RCE 13528
Plumas County Surveyor

RECORDERS CERTIFICATE
Filed this 27th day of February, 1980, at 4:10 P.m. in Book 5 of R/S at Page 100 at the request of The County Engineer.

Fee \$ 9.00
File No 7000

Ilva P. Pigg County Recorder
By *Frances Nicol* Deputy

JOHN W. HAMBY LICENSED LAND SURVEYOR
Paradise, California P.O. Box 842 (916) 877-6253

SHEET 1 OF 3

Portola, California P.O. Box 842 (916) 832-5571