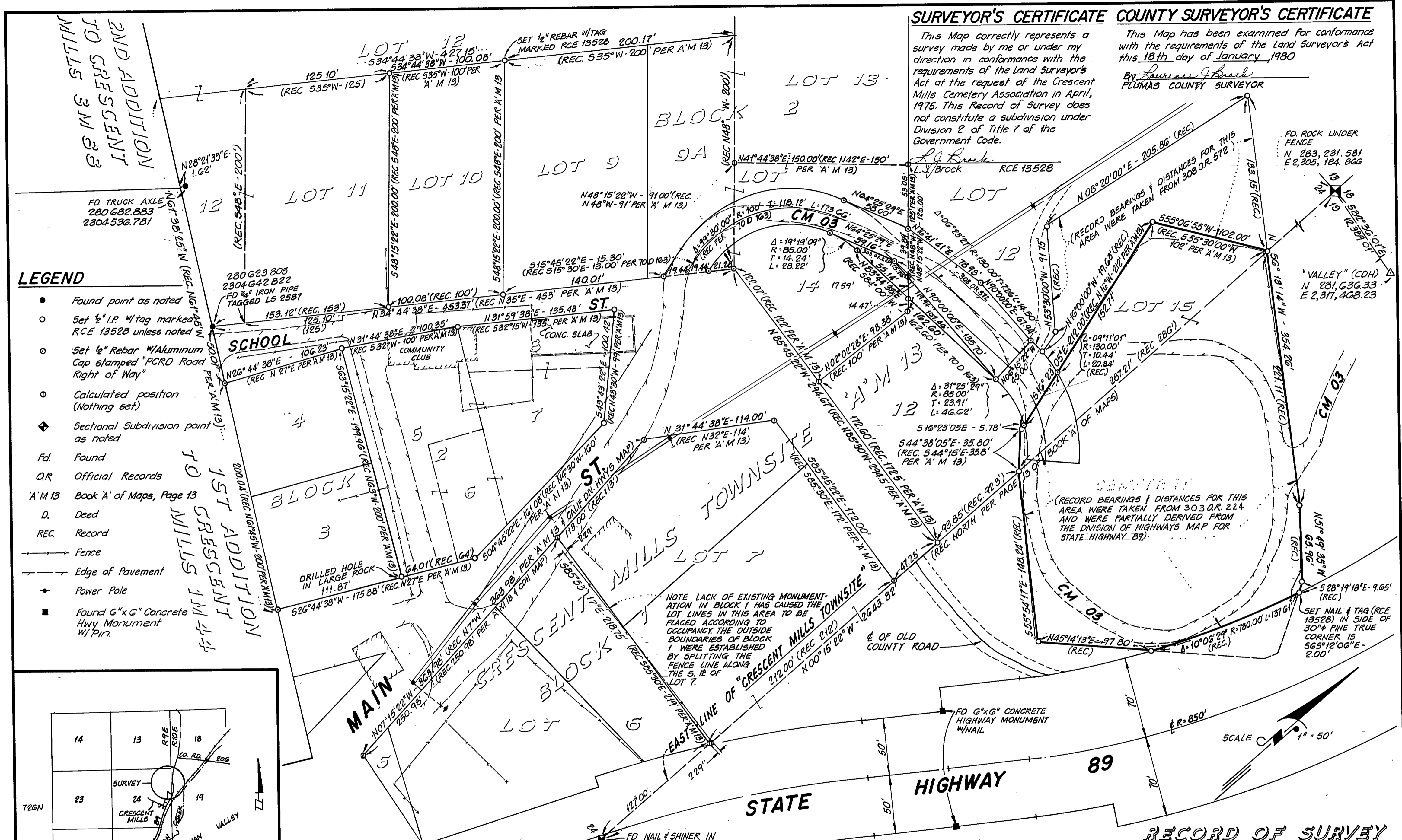


SURVEYOR'S CERTIFICATE COUNTY SURVEYOR'S CERTIFICATE

This Map correctly represents a survey made by me or under my direction in conformance with the requirements of the Land Surveyor's Act at the request of the Crescent Mills Cemetery Association in April, 1975. This Record of Survey does not constitute a subdivision under Division 2 of Title 7 of the Government Code.

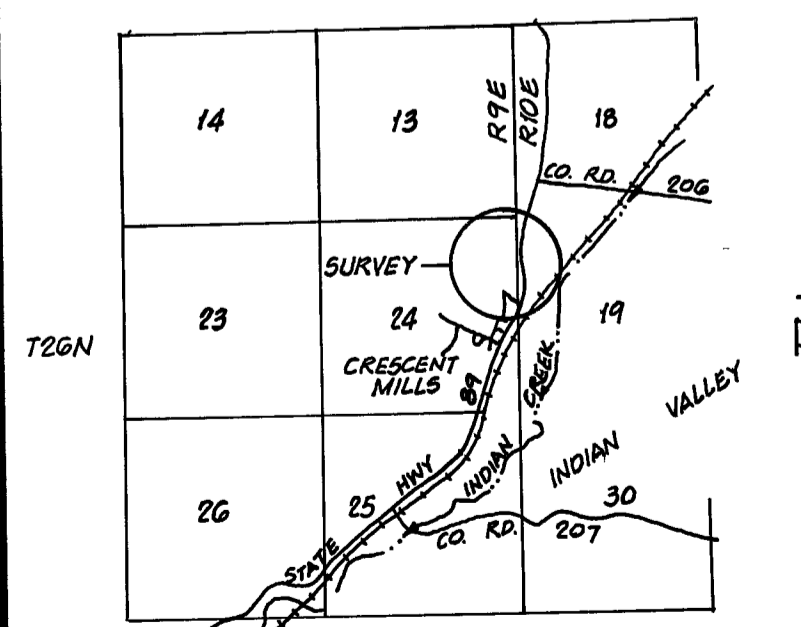
This Map has been examined for conformance with the requirements of the Land Surveyor's Act this 18th day of January, 1980

By Lawrence J. Brock
PLUMAS COUNTY SURVEYOR



LEGEND

- Found point as noted
- Set 1/2" I.P. w/tag marked RCE 13528 unless noted
- Set 1/2" Rebar w/Aluminum Cap stamped "PCRD Road Right of Way"
- Calculated position (Nothing set)
- ◆ Sectional Subdivision point as noted
- Fd. Found
- OR Official Records
- A'M 13 Book 'A' of Maps, Page 13
- D. Deed
- REC Record
- Fence
- Edge of Pavement
- Power Pole
- Found 6"x6" Concrete Hwy Monument w/ Pin.



LOCATION MAP
SCALE: 1" = 1 MILE

NOTE

Distances shown are ground distances All bearings are grid, based on the California Coordinate System, Zone 1. Multiply distances shown by 0.9997999 to obtain grid distances. Coordinates were established from VALLEY (CDH) N = 281,636.33 E = 2,317,468.23

NOTE LACK OF EXISTING MONUMENTATION IN BLOCK 1 HAS CAUSED THE LOT LINES IN THIS AREA TO BE PLACED ACCORDING TO OCCUPANCY. THE OUTSIDE BOUNDARIES OF BLOCK 1 WERE ESTABLISHED BY SPLITTING THE FENCE LINE ALONG THE S. 1/2 OF LOT 7.

RECORDER'S CERTIFICATE

Filed this 31st day of March 1980, at 2:44 P.M. in Book 5 of Records of Survey at Page 105 at the request of L.J. Brock, County Recorder
Fee \$ By Frances Nicol
File No. 7916 Deputy

RECORD OF SURVEY

FOR
PLUMAS COUNTY BOARD OF SUPERVISORS
WITHIN
THE NW 1/4 OF SECTION 19, T26N, R10E M.D.M.
AND
THE NE 1/4 OF SECTION 24, T26N, R9E M.D.M.
MAY, 1978 PLUMAS COUNTY, CALIFORNIA SHEET 1 OF 2