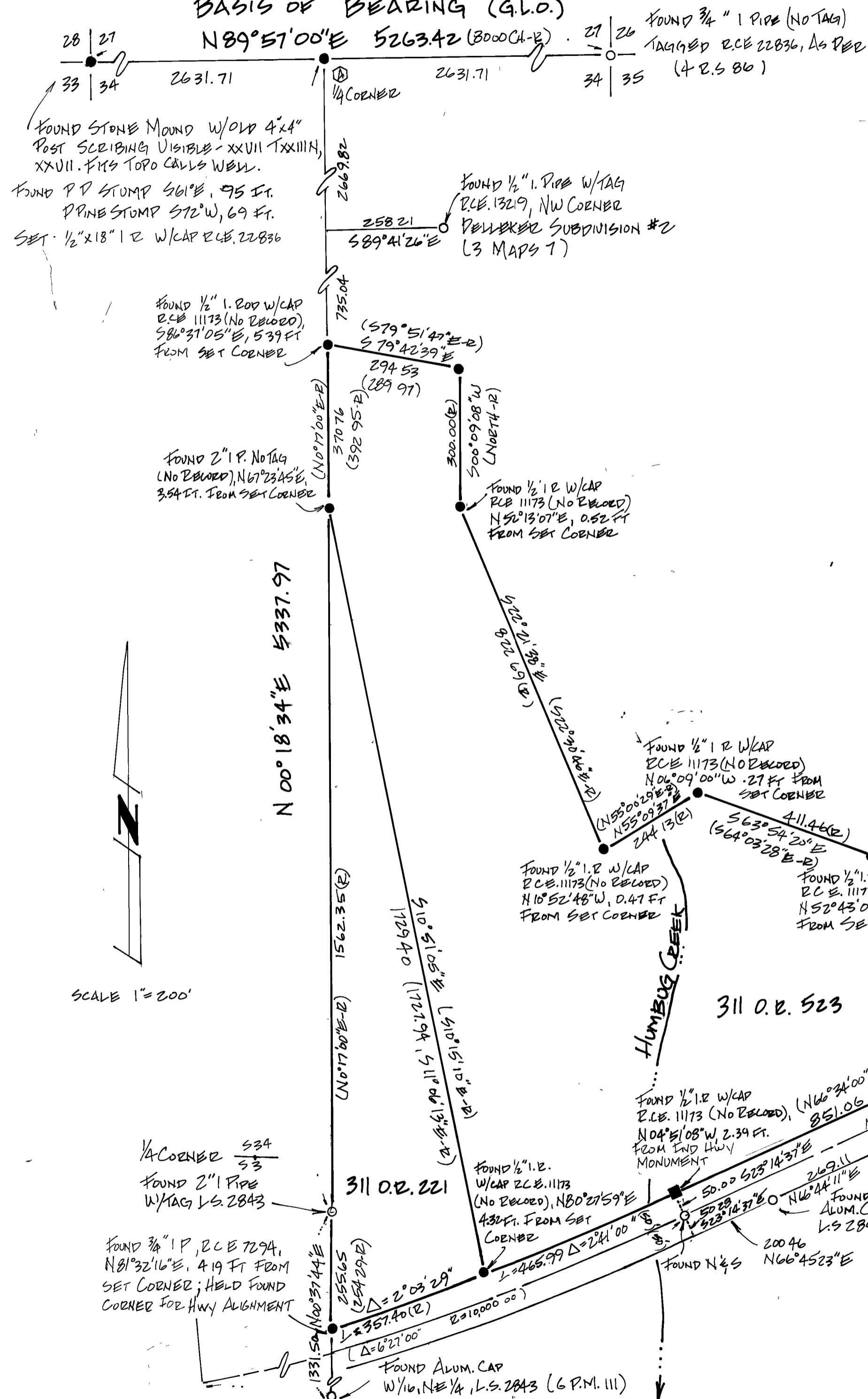


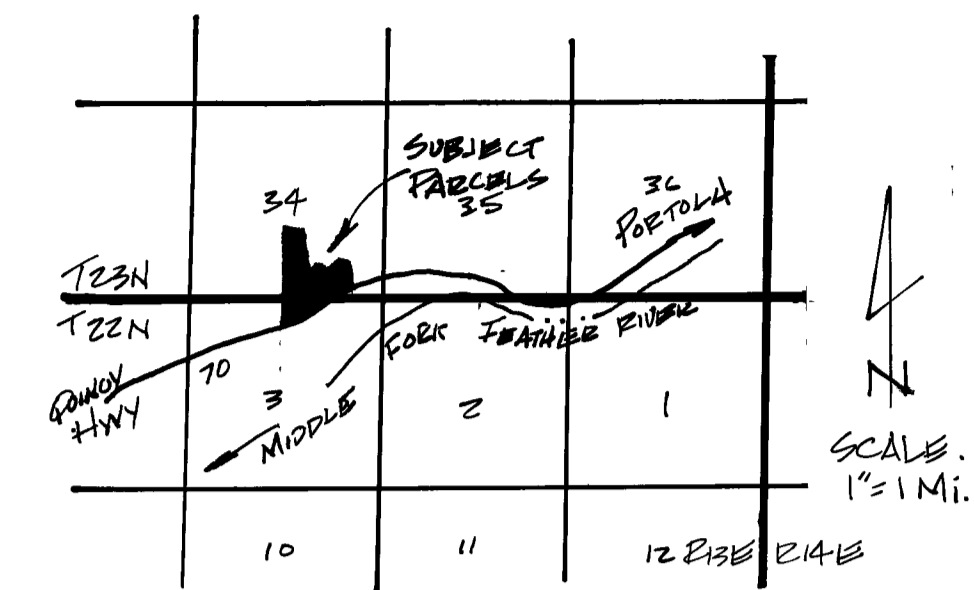
BASIS OF BEARING (G.L.O.)

N89°51'00"E 5263.42 (3000 CA-R)



NOTES

- Ⓐ FOUND NO EVIDENCE OF CORNER OR ACCESSORIES; SINGLE PROPORTIONED CORNER FALL ON LARGE ROCK. SET WITNESS CORNER BEARS S89°51'00"W, 10.00 FEET CORNER FENCEPOST W/K-TAG BEARS N15°28'30"W, 14.33 FEET.
- Ⓑ FOUND 1/2" I.B. W/CAP R.C.E. 11173 (NO RECORD) BEARS N79°41'06"W, 0.57 FT. FROM SET CORNER
- Ⓒ FOUND 1/2" I.B. W/CAP R.C.E. 11173 (NO RECORD) BEARS N77°46'45"W, 0.62 FT. FROM SET CORNER
- Ⓓ FOUND 1/2" I.B. W/CAP R.C.E. 11173 (NO RECORD) BEARS N77°16'51"W, 0.65 FT. FROM SET CORNER
- Ⓔ FOUND 1/2" I.B. W/CAP R.C.E. 11173 (NO RECORD) BEARS N58°11'06"E, 0.09 FT. FROM SET CORNER



LOCATION MAP

SURVEYOR'S CERTIFICATE

THIS MAP CORRECTLY REPRESENTS A SURVEY MADE BY ME OR UNDER MY DIRECTION IN CONFORMANCE WITH THE REQUIREMENTS OF THE LAND SURVEYORS ACT AT THE REQUEST OF LYNN WELCH IN JULY, 1979



Clifford R. Brown
CLIFFORD R. BROWN
R.C.E. 22836

COUNTY SURVEYOR'S CERTIFICATE

THIS MAP HAS BEEN EXAMINED FOR CONFORMANCE WITH THE REQUIREMENTS OF THE LAND SURVEYORS ACT THIS 10th DAY OF April, 1980.

Lawrence J. Brock
LAWRENCE J. BROCK, R.C.E. 13528
PLUMAS COUNTY SURVEYOR

COUNTY RECORDER'S CERTIFICATE

FILED THIS 10th DAY OF April, 1980, AT 11:02 M. IN BOOK 5 OF RECORD OF SURVEYS AT PAGE 110, AT THE REQUEST OF THE COUNTY ENGINEER.

FEE \$5.00
FILE NO 8176

ILA DIGGS
COUNTY RECORDER
By Frances Nicol
DEPUTY

RECORD OF SURVEY

FOR: LYNN WELCH

LOCATED IN: THE SE QUARTER SECTION 34, T23N., R13E., & THE NE QUARTER SECTION 3, T23N., R13E., M.D.M., PLUMAS COUNTY, CALIFORNIA.

BY: **CLIFF BROWN ENGINEERING AND SURVEYING**

DATED: JANUARY 29, 1980

LEGEND

- FOUND MONUMENT AS NOTED
- SET 1/2" x 1/8" I 200 W/CAP R.C.E. 22836
- EXTENDED LINES OF SURVEY
- - - CENTERLINE
- BOUNDARY SURVEYED
- Ⓐ SEE NOTES
- - - DRAINAGE
- ◇ RECORD
- ◇ CALCULATED POINT

SCALE 1" = 200'