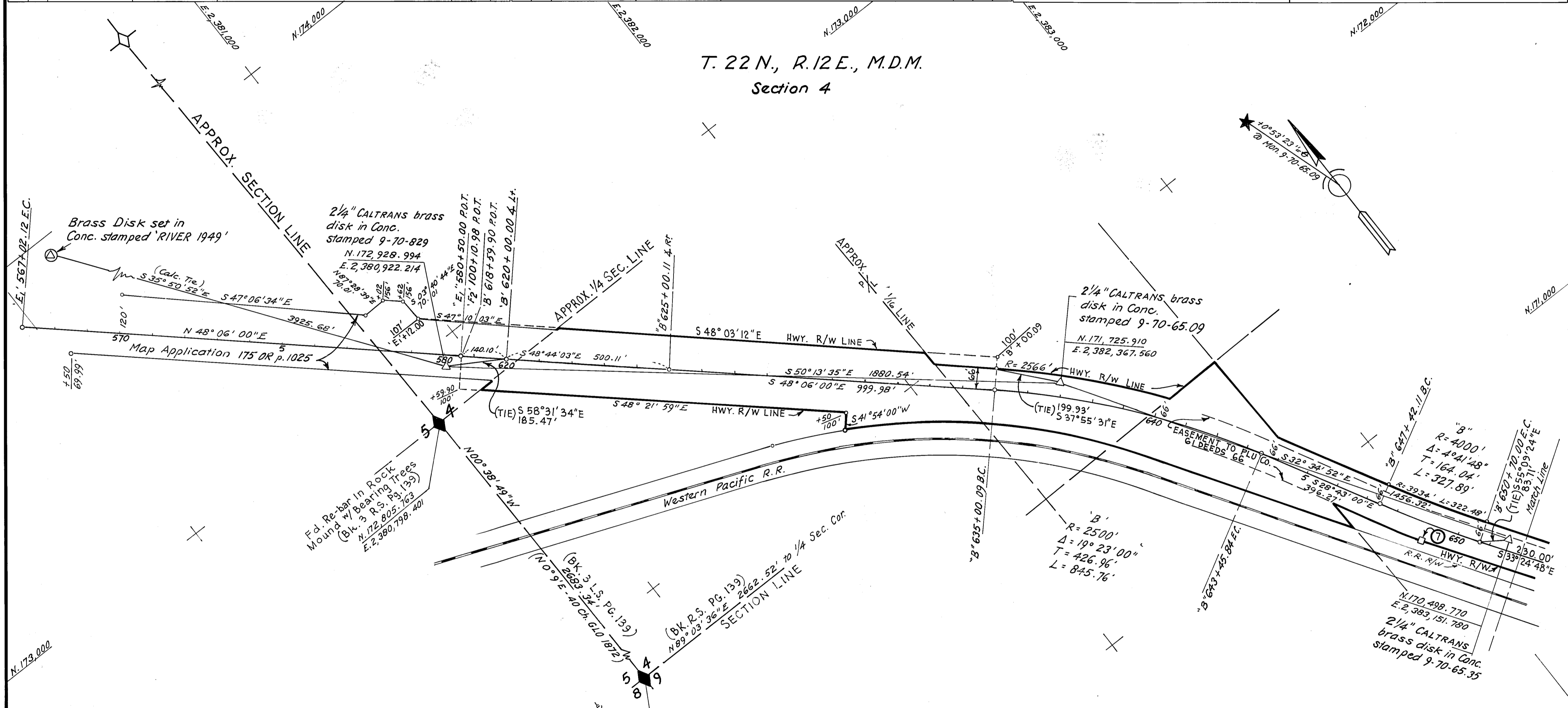


- FOUND POINTS -

- LEGEND -

SEC	PT	COORDINATES		DESCRIPTION	RECORDED AT			SEC	PT	COORDINATES		DESCRIPTION	RECORDED AT		
		NORTH	EAST		BK	OF	PG			BK	OF		PG		
7		170,664.23	2,382,940.03	B.P.R. R/W MON.											

△	PROJECT CONTROL SURVEY POINT, SET MONUMENT AS INDICATED.
⊙	2 ND ORDER STATION IN THE NATIONAL GEODETIC CONTROL NETWORK.
◆	SECTION OR FRACTIONAL CORNER, FOUND.
◊	SECTION OR FRACTIONAL CORNER, NOT LOCATED.
□	MONUMENT, AS NOTED
○	NO MONUMENT SET.



EXCEPTING THOSE SHOWN OTHERWISE, ALL DISTANCES AND BEARINGS ARE GRID, BASED ON CALIFORNIA COORDINATE SYSTEM, ZONE I. TO OBTAIN GROUND LEVEL DISTANCES, MULTIPLY GRID DISTANCES SHOWN BY 1.0001557

GRID WAS ESTABLISHED FROM U.S.C. & G.S. TRIANGULATION STATION			
RIVER 1949	N 176,111.06		N
	E 2,378,623.21		E
MILL 1949	N 136,978.34		N
	E 2,389,343.83		E

SUPPLEMENTARY INFORMATION MAY BE OBTAINED FROM THE DISTRICT OFFICE, SURVEY DEPARTMENT OR RIGHT OF WAY ENGINEERING DEPT., 1657 RIVERSIDE DR., REDDING, CALIFORNIA.

STATE OF CALIFORNIA
 BUSINESS AND TRANSPORTATION AGENCY
 DEPARTMENT OF TRANSPORTATION
 DISTRICT 02
**RECORD OF SURVEY
 OF MONUMENTATION
 IN PLUMAS COUNTY
 ON ROUTE 70
 P.M. 64.7 TO P.M. 67.1**
 PREPARED BY R. Breunig_CHKD. BY R.B. Hall
 DRAWN BY A.H. Woodford DATE April 1982
 SCALE: 1" = 200' SHEET 2 OF 4