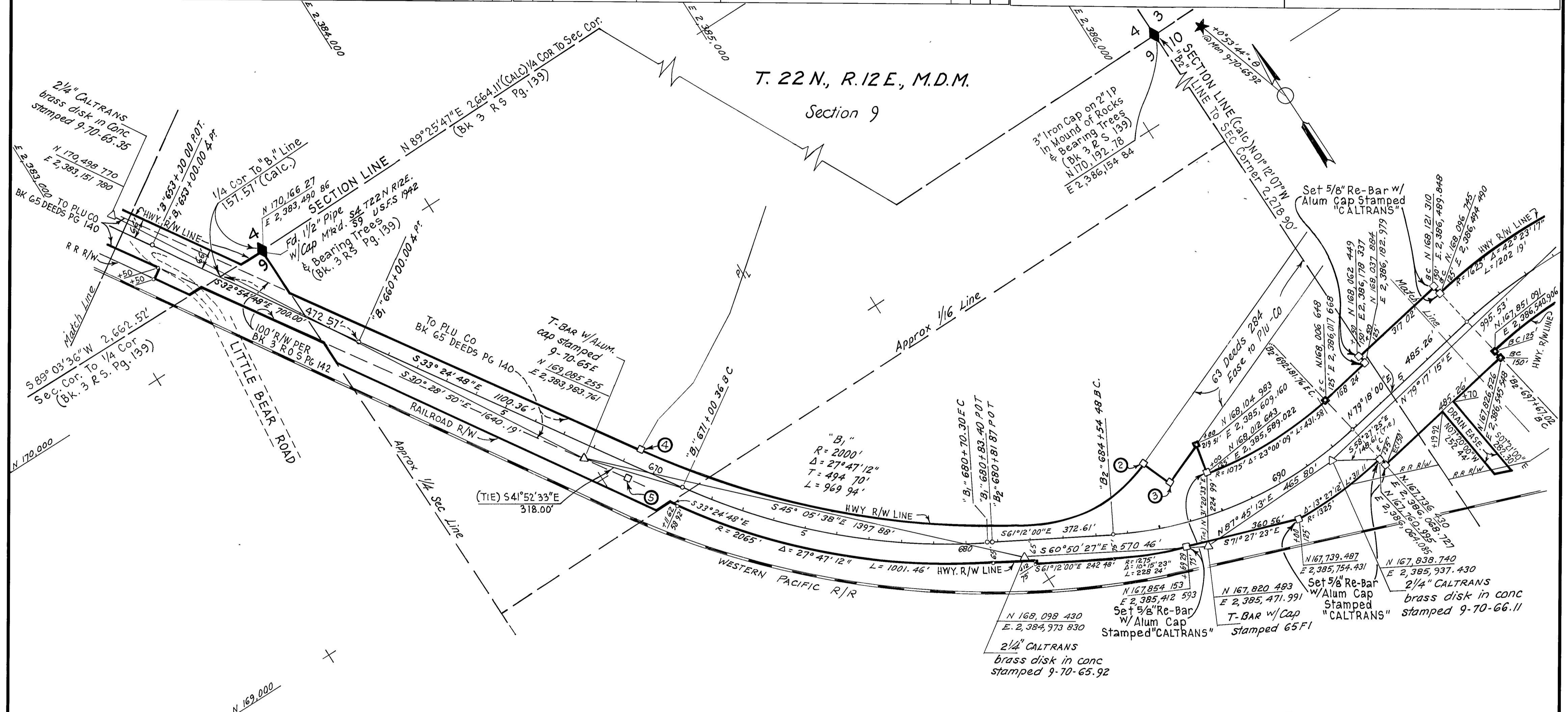


- FOUND POINTS -

- LEGEND -

SEC	PT	COORDINATES		DESCRIPTION	RECORDED AT			SEC	PT	COORDINATES		DESCRIPTION	RECORDED AT		
		NORTH	EAST		BK	OF	PG			NORTH	EAST		BK	OF	PG
9	2	168,143.52	2,385,438.61	FD. B.P.R. R/W MON.											
9	3	168,050.91	2,385,476.24	FD. B.P.R. R/W MON.											
9	4	169,014.424	2,384,151.639	FD. B.P.R. R/W MON.											
9	5	168,960.161	2,384,067.600	FD. B.P.R. R/W MON.											

△	PROJECT CONTROL SURVEY POINT, SET MONUMENT AS INDICATED
◆	SECTION OR FRACTIONAL CORNER, FOUND
◻	MONUMENT, SET T-BAR W/TAG, "DIST SURV ENGR"
◊	SECTION OR FRACTIONAL CORNER, NOT LOCATED.
○	NO MONUMENT SET.



EXCEPTING THOSE SHOWN OTHERWISE, ALL DISTANCES AND BEARINGS ARE GRID, BASED ON CALIFORNIA COORDINATE SYSTEM, ZONE I. TO OBTAIN GROUND LEVEL DISTANCES, MULTIPLY GRID DISTANCES SHOWN BY 1.0001557

GRID WAS ESTABLISHED FROM U.S.C. & G.S. TRIANGULATION STATION	
RIVER 1949 N 176,111.06	N
E 2,378,623.21	E
MILL 1949 N 136,978.34	N
E 2,389,243.83	E

SUPPLEMENTARY INFORMATION MAY BE OBTAINED FROM THE DISTRICT OFFICE, SURVEY DEPARTMENT OR RIGHT OF WAY ENGINEERING DEPT, 1657 RIVERSIDE DR. REDDING, CALIFORNIA

STATE OF CALIFORNIA
BUSINESS AND TRANSPORTATION AGENCY
DEPARTMENT OF TRANSPORTATION
DISTRICT 02
RECORD OF SURVEY OF MONUMENTATION
IN PLUMAS COUNTY
ON ROUTE 70
PM.64.7 TO PM 67.1

PREPARED BY *R. Crews* CHKD. BY *R. B. Hall*
DRAWN BY *A. H. Woodford* DATE *April 1983*
SCALE: 1" = 200' SHEET 3 OF 4