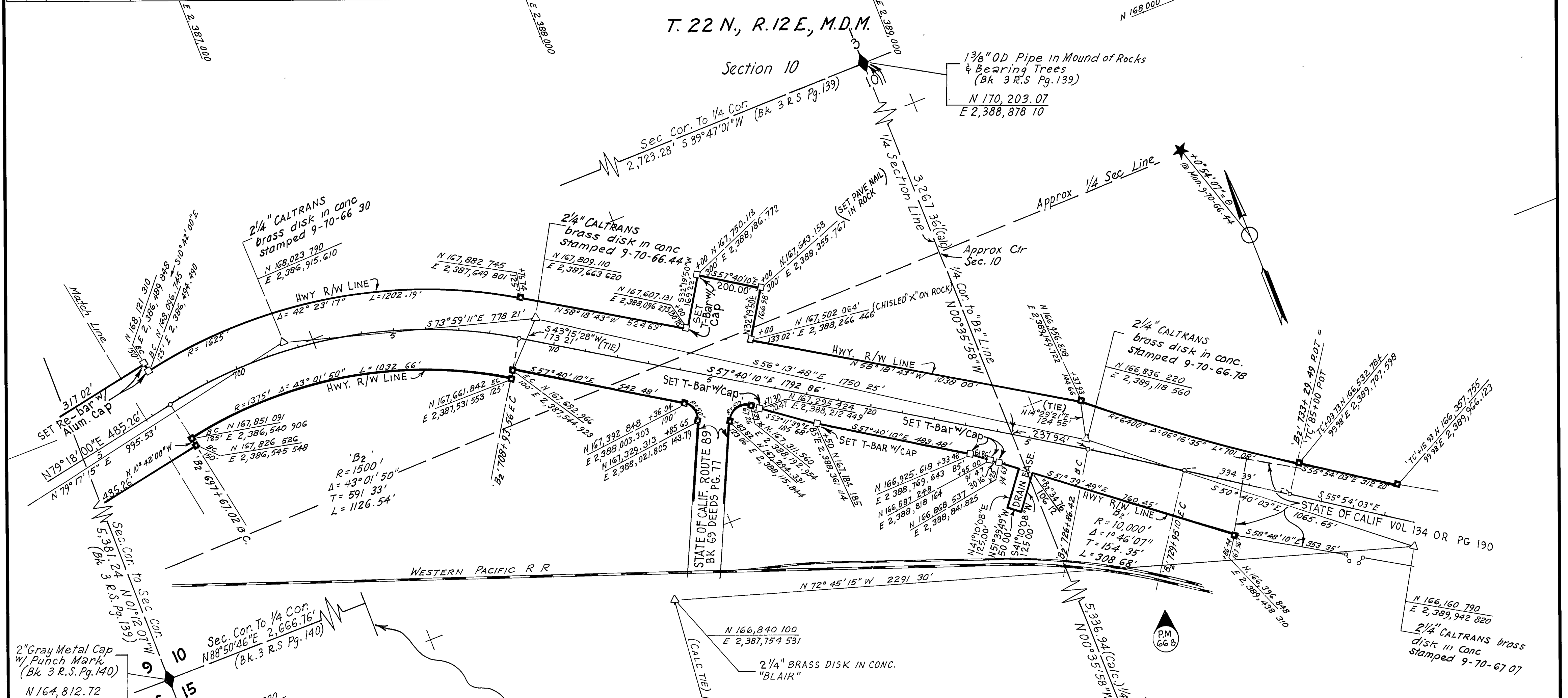


- FOUND POINTS -

- LEGEND -

SEC	PT	COORDINATES		DESCRIPTION	RECORDED AT			SEC	PT	COORDINATES		DESCRIPTION	RECORDED AT		
		NORTH	EAST		BK	OF	PG			NORTH	EAST		BK	OF	PG

- △ PROJECT CONTROL SURVEY POINT SET MONUMENT AS INDICATED
- ◈ SECTION OR FRACTIONAL CORNER, FOUND
- MONUMENT, AS NOTED
- NO MONUMENT SET.
- ⊙ 2<sup>nd</sup> ORDER STATION IN THE NATIONAL GEODETIC CONTROL NETWORK
- ◇ SECTION OR FRACTIONAL CORNER, NOT LOCATED.



EXCEPTING THOSE SHOWN OTHERWISE, ALL DISTANCES AND BEARINGS ARE GRID, BASED ON CALIFORNIA COORDINATE SYSTEM, ZONE I. TO OBTAIN GROUND LEVEL DISTANCES, MULTIPLY GRID DISTANCES SHOWN BY 1.0001557

GRID WAS ESTABLISHED FROM U.S.C. & G.S. TRIANGULATION STATION

RIVER 1949	N 176,111.06	N	---
	E 2,378,623.21	E	---
MILL 1949	N 136,978.34	N	---
	E 2,389,343.83	E	---

SUPPLEMENTARY INFORMATION MAY BE OBTAINED FROM THE DISTRICT OFFICE, SURVEY DEPARTMENT OR RIGHT OF WAY ENGINEERING DEPT, 1657 RIVERSIDE DR, REDDING, CALIFORNIA

STATE OF CALIFORNIA  
BUSINESS AND TRANSPORTATION AGENCY  
DEPARTMENT OF TRANSPORTATION  
DISTRICT 02  
**RECORD OF SURVEY  
OF MONUMENTATION**  
IN PLUMAS COUNTY  
ON ROUTE 70  
P.M. TO P.M.

PREPARED BY *R. Breuning* CHKD. BY *R. P. Hall*  
DRAWN BY *B.H. Woodford* DATE *April 1983*  
SCALE: 1" = 200' SHEET 4 OF 4