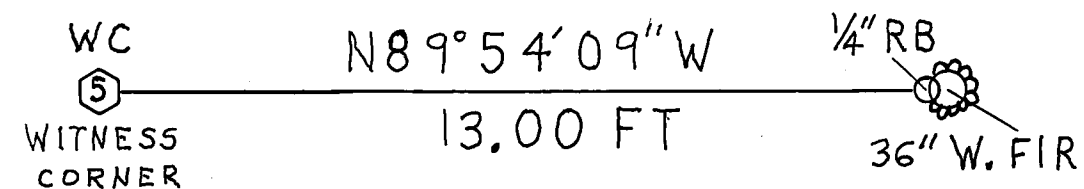
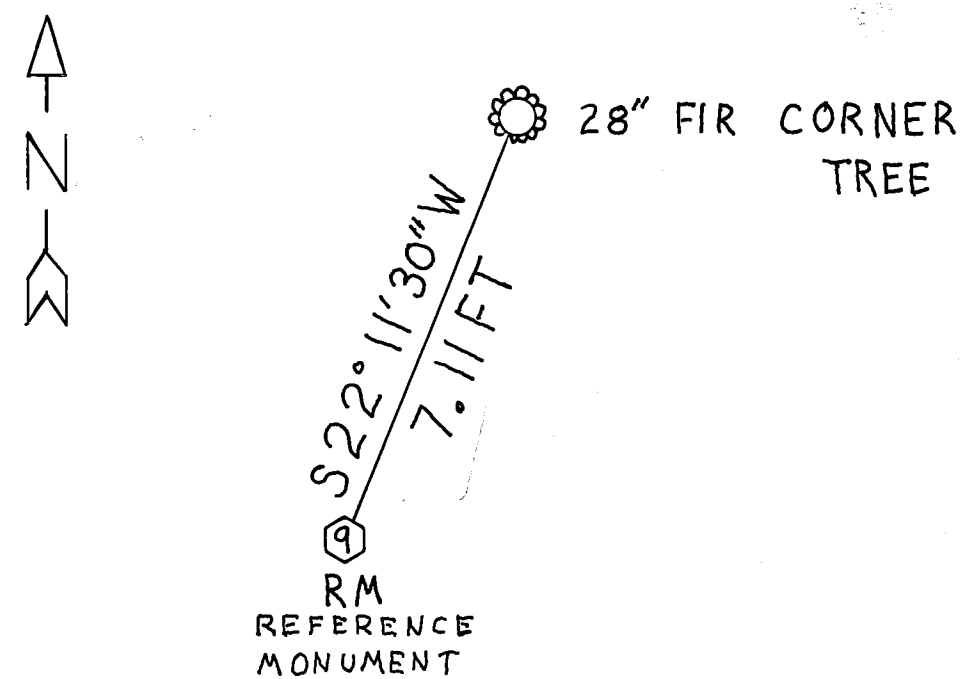


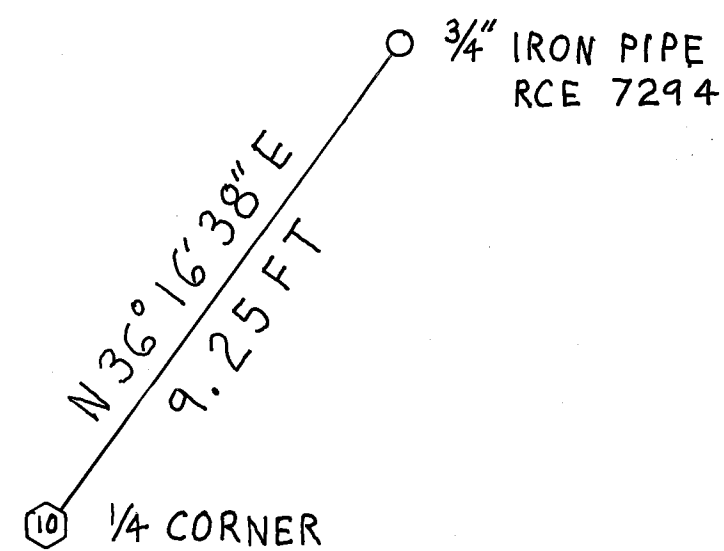
DETAIL A



DETAIL B



DETAIL C



SCALE: 1" = 3'

CORNER DESCRIPTIONS

- ① FOUND: STONE MOUND 31"X10" (FIR POST IN STONE MOUND). 43" PINE N28°54'W 78.18 FT CLOSED SCAR (16" S. PINE N30°W 128 LKS), 41" PINE N28°19'E 115.41 FT BURNED (36" PINE N28°E 179 LKS).  
SET: STD USFS MON IN 24"X12" MS WITH NEW BT'S:  
12" FIR N15°11'E 8.74 FT MKD T26NR12ES6 BT  
3" FIR S43°11'E 14.00 FT MKD T26NR12ES7 BT  
6" FIR S18°21'W 9.20 FT MKD T26NR11ES12 BT  
5" FIR N31°27'W 14.92 FT MKD T26NR11ES1 BT
- ② FOUND: STONE MOUND 24"X12" WELL-IMBEDDED (POST IN STONE MOUND). 18" P. PINE SNAG N18°06'W 25.66 FT SCRIBING "BT" VISIBLE.  
SET: STD USFS MON WITH NEW BT'S:  
13" W. FIR S21°33'W 31.8 FT MKD 1/4 S7 BT  
9" W. FIR N81°13'W 7.5 FT MKD 1/4 S6 BT
- ③ SET: STD USFS MON AT PROPORTIONATE POSITION WITH BT'S: 15" W. FIR S14°41'E 46.20 FT  
9" W. FIR N62°13'W 57.13 FT
- ④ FOUND: 24"X18"X4" STONE IN IMBEDDED STONE MOUND (24"X20"X4" STONE IN MOUND). 34" J. PINE N43°29'E 27.01 FT DOWN, ROTTED (14" PINE N42°E 40 LKS).  
35" J. PINE S63°55'E 65.12 FT SCRIBING VISIBLE (25" PINE S65°E 96 LKS). 34" J. PINE S12°18'W 7.26 FT BURNED FACE (20" PINE S20°W 10 LKS). 32" J. PINE N52°58'W 80.87 FT CLOSED FACE (12" PINE N53°W 126 LKS).  
SET: STD USFS MON IN 36"X12" MS, BURIED STONE ALONGSIDE, WITH NEW BT'S: 8" D. FIR N25°06'E 38.70 FT MKD T26NR12ES5 BT  
13" CEDAR S62°27'E 30.09 FT MKD T26NR12ES8 BT  
7" P. PINE S56°47'W 39.65 FT MKD T26NR12ES7 BT  
10" D. FIR N37°57'W 19.73 FT MKD T26NR12ES6 BT
- ⑤ SET: 1/4" REBAR AT PROPORTIONATE POSITION ALONG SW EDGE OF 36" W. FIR FROM WHICH A WITNESS CORNER BEARS N89°54'09" W 13.00 FT, BEING A STD USFS MON IN 20"X10" MS, WITH BT'S:  
6" W. FIR N64°13'W 20.48 FT MKD N 1/16 S7 BT  
18" W. FIR S25°38'E 39.29 FT MKD N 1/16 S8 BT
- ⑥ NOTHING FOUND, SET: STD USFS MON AT PROPORTIONATE POSITION WITH BT'S:  
8" D. FIR N17°37'E 31.42 FT MKD 1/4 S8 BT  
7" P. PINE S77°26'W 11.80 FT MKD 1/4 S7 BT
- ⑦ FOUND: 12"X9"X6" NOTCHED STONE IN 24"X6" MS (12"X8"X7" STONE IN MOUND). 32" D. FIR N58°35'E 17.08 FT CLOSED FACE (10" SPRUCE N59°E 30 LKS). 60" S. PINE SNAG S10°26'E 29.86 FT SCRIBING VISIBLE (40" S. PINE S12°E 38 LKS). 58" D. FIR SNAG S77°52'W 143.89 FT SCRIBING VISIBLE (30" FIR S78°W 215 LKS).  
±48" STUMPHOLE N67°56'W 23.95 FT (20" FIR N65°W 32 LKS).  
SET: STD USFS MON IN 24"X10" MS, BURIED SAID STONE ALONGSIDE,

WITH NEW BT'S: 11" D. FIR N1°40'E 31.55 FT MKD T26NR12ES8 BT  
5" CEDAR S48°45'E 21.50 FT MKD T26NR12ES17 BT  
9" D. FIR S56°14'W 6.70 FT MKD T26NR12ES18 BT  
9" D. FIR N28°48'W 30.34 FT MKD T26NR12ES7 BT

- ⑧ NOTHING FOUND, SET: STD USFS MON AT PROPORTIONATE POSITION IN 24"X12" MS WITH BT'S:  
15" D. FIR N30°E 11 FT MKD 1/4 S7 BT  
14" D. FIR S32°E 7 FT MKD 1/4 S18 BT
- ⑨ FOUND: 28" FIR BLAZED ON 4 SIDES (8" FIR TREE). STUMPHOLE, 8" FIR LOG SCRIBING VISIBLE AT RECORD (6" FIR S53°E 17 LKS), STUMPHOLE AT RECORD (14" FIR S64°W 16 LKS), FIR SNAG, HEALED BLAZE AT RECORD (9" FIR N40°W 22 LKS). FROM CORNER TREE A REFERENCE MON BEARS S22°11'30" W 7.11 FT, BEING A STD USFS MON IN 28"X12" MS AND NEW BT'S: 19" CEDAR N76°59'E 51.54 FT MKD T26NR12ES7 BT  
23" D. FIR S21°57'E 13.34 FT MKD T26NR12ES18 BT  
6" D. FIR S73°54'W 24.55 FT MKD T26NR11ES13 BT  
9" D. FIR N61°24'W 45.11 FT MKD T26NR11ES12 BT

- ⑩ FOUND: 16"X8"X6" STONE IN 24"X8" MS (16"X8"X6" STONE AND STONE MOUND). B. OAK LOG N62°51'E 190.35 FT SCRIBING VISIBLE, POSITION DISTURBED (23" B. OAK N63°E 245 LKS), 50" PINE STUMP S86°26'W 5.94 FT SCRIBING VISIBLE (50" Y. PINE S89°W 9 LKS). FOUND 3/4" IRON PIPE N36°16'38"E 9.25 FT IN 30" MS WITH TAG: RCE 7294 UNDER FENCE DEADMAN.  
SET: STD USFS MON IN 30"X15" MS, BURIED STONE ALONGSIDE, WITH NEW BT'S: 18" P. PINE N82°16'E 101.2 FT MKD 1/4 S7 BT  
14" CEDAR N76°16'W 101.1 FT MKD 1/4 S12 BT
- ⑪ SET: STD USFS MON IN 18"X4" MS WITH BT'S:  
16" W. FIR N5°15'E 36.9 FT MKD NE 1/16 S7 BT  
6" W. FIR S64°30'E 7.5 FT MKD NE 1/16 S7 BT

ABBREVIATIONS

MON - MONUMENT	S. PINE - SUGAR PINE
FT - FEET	P. PINE - PONDEROSA PINE
LKS - LINKS	J. PINE - JEFFREY PINE
MS - MOUND OF STONE	Y. PINE - YELLOW PINE
BT - BEARING TREE	W. FIR - WHITE FIR
MKD - MARKED	D. FIR - DOUGLAS FIR
RB - REBAR	B. OAK - BLACK OAK

NOTE: STD USFS MON = A STANDARD U.S. FOREST SERVICE MONUMENT IS A BERNSTEN A-I-BR BREAK-OFF MONUMENT: A 2 1/2" DIAMETER ALUMINUM PIPE WITH A MAGNET IN A BASE DESIGNED TO BREAK OFF ON IMPACT AND A 3 1/2" DIAMETER ALUMINUM CAP MARKED AS SHOWN.