

LOCATION MAP
SCALE: 1" = 2000'

LEGEND

- FOUND MONUMENT AS NOTED
- SET 1/2" x 18" REBAR W/ALUM. CAP MARKED LS 4976
- ◇ COMPUTED POINT
- ⊕ RECORD DATA PER 4 R.S. 57
- () RECORD DATA PER NOTED DOCUMENT
- FENCELINE
- ◆ SECTIONAL CORNER AS NOTED
- (()) RECORD DATA PER 74 DEEDS 291
- [] RECORD & MEASURED PER 406 O.R. 602

NOTES

- THIS SURVEY ATTEMPTED TO RETRACE THE FOOTSTEPS OF THE ORIGINAL SURVEYOR BY RECOVERING MONUMENTS CALLED FOR IN THE ORIGINAL GRANT DEEDS FROM W.L. HAMBLIN. AFTER A THOROUGH FIELD SEARCH, 3 MONUMENTS WERE FOUND ALONG THE EAST LINE OF THE UNRECORDED HAMBLIN SUBDIVISION (1/16TH LINE) WHICH FIT WELL RELATIVE TO EACH OTHER AND TO THE 1/16TH LINE COMPUTED BASED UPON OUR MEASUREMENTS AND DATA FROM 3 R.S. 94. THESE MONUMENTS IN CONNECTION WITH SENIORITY WERE USED TO RE-ESTABLISH TITLE LINES ON THE GROUND.
- FOUND SCATTERED ROCK MOUND WITH WELL DEFINED CAVITY (FORMER STAKE LOCATION) ON PROLONGATION OF LINE BETWEEN POINTS 2 AND 3. ROCK MOUND FITS WELL WITH RECORD DISTANCE TO POINT 2 AND IS ON OLD BLAZED LINE RUNNING EAST. 74 DEEDS 291, 74 DEEDS 401 AND 83 DEEDS 117 MAKE CALL TO "SECTION CORNER STAKE MARKED SE 11-IV & SE 1-IV."
- THE PURPOSE OF THIS SURVEY WAS TO DETERMINE THE DEFECTS IN JUDY MURPHY'S TITLE RELATIVE TO HER LINES OF POSSESSION. A HIATUS WAS KNOWN TO EXIST BETWEEN THE SOUTH LINE OF MURPHY AND THE SOUTH LINE OF SECTION 2. PRIOR TO THIS SURVEY, THIS SURVEY REVEALED THE FULL EXTENT OF THE HIATUS IN ORDER TO IMPLEMENT A QUIET TITLE ACTION. A JUDGEMENT WAS MADE IN FAVOR OF JUDY MURPHY AND IS RECORDED IN BOOK 401 AT PAGE 559 OF PLUMAS COUNTY OFFICIAL RECORDS.
- A LOT LINE ADJUSTMENT WAS APPROVED MAY 2, 1984 AND RECORDED IN BOOK 406 AT PAGE 602 OF PLUMAS COUNTY OFFICIAL RECORDS. THE SET MONUMENTS REFLECT THE ADJUSTED LINES.
- IT SHOULD ALSO BE NOTED THAT ORIGINALLY W.L. HAMBLIN HAD PLANNED A SUBDIVISION FOR THIS AREA INCLUDING A MAP OF THE LOTS. HOWEVER, THE SUBDIVISION MAP WAS NEVER RECORDED AND THE LOTS WERE GRANTED OUT SEPARATELY BY METES AND BOUNDS. A COPY OF THIS MAP WAS ON FILE IN THE ENGINEER'S OFFICE (PLUMAS COUNTY) AND HAS BEEN REVIEWED BY RON MARSA IN THE PLUMAS COUNTY ASSESSOR'S OFFICE.
- ALONG SE SIDE OF D.M. CAP FOUND PAINTED 5" x 5" POST W/SCRIBING "511 McL-1-6260" ON SW SIDE, "512" ON SE SIDE, "52" ON NW SIDE AND "51" ON NE SIDE. FROM WHICH BRS. A 25" D. FIR W/FACE S15°W 24.2 FT. (14" R. FIR S15°56'W 28.81'; MS 6260), AN 18" D. OAK W/FACE S32°E 55.0' (NO RECORD) AND A 32" P. PIN N45°W 43.3' (NO RECORD). NO BT'S SCRIBED ON ORIGINAL 610 SURVEY.
- DID NOT FIND THE ORIGINAL 1/4 CORNER PER 610 SURVEY. FOUND CORNER POST (MS 610) WAS SET AT MIDPOINT BETWEEN NE & NW CORNERS SECTION 11. 5 R.S. 94 SHOWS THIS CORNER FALLING WITHIN 0.38 FT. OF MIDPOINT. IT SHOULD BE NOTED THAT THE LEGAL DESCRIPTION FOR THE McLELLAN PLACER MINE CALLS OUT THE QUARTER CORNER BETWEEN SECTIONS 2 & 11 (COR. NO. 8 MS 6260).

SEE NOTE # 7

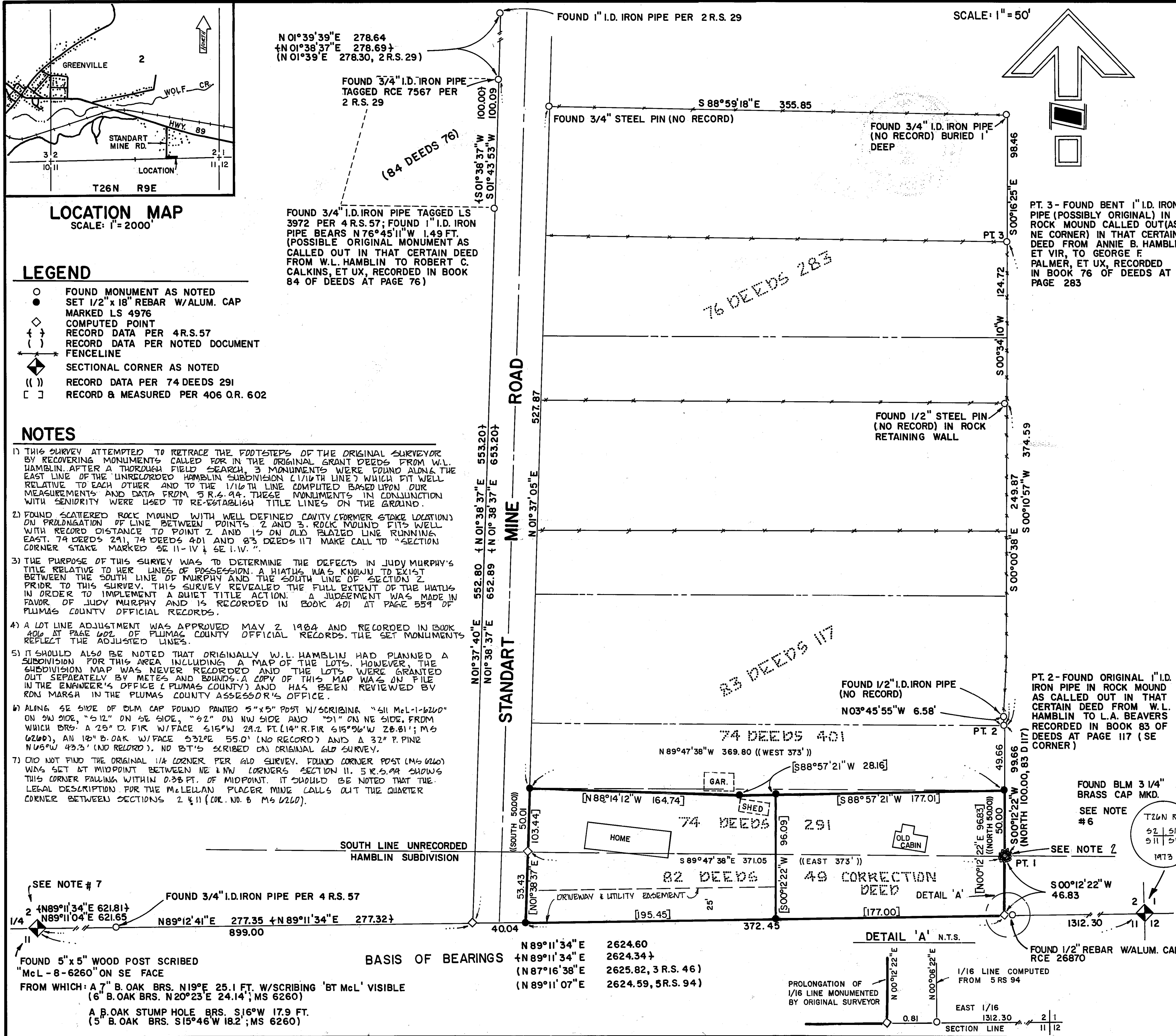
FOUND 3/4" I.D. IRON PIPE PER 4 R.S. 57

FOUND 5" x 5" WOOD POST SCRIBED "McL-8-6260" ON SE FACE FROM WHICH: A 7" B. OAK BRS. N19°E 25.1 FT. W/SCRIBING 'BT McL' VISIBLE (6" B. OAK BRS. N20°23'E 24.14'; MS 6260)

A B. OAK STUMP HOLE BRS. S16°W 17.9 FT. (5" B. OAK BRS. S15°46'W 18.2'; MS 6260)

BASIS OF BEARINGS

N 89°11'34" E	2624.60
N 89°11'34" E	2624.34
(N 87°16'38" E	2625.82, 3 R.S. 46)
(N 89°11'07" E	2624.59, 5 R.S. 94)



SURVEYOR'S CERTIFICATE

THIS MAP CORRECTLY REPRESENTS A SURVEY MADE BY ME OR UNDER MY DIRECTION IN CONFORMANCE WITH THE REQUIREMENTS OF THE LAND SURVEYOR'S ACT AT THE REQUEST OF JANET FRANZ IN AUGUST 1984

MARK D. FILSINGER
LICENSED SURVEYOR
STATE OF CALIFORNIA
LS 4976

COUNTY SURVEYOR'S CERTIFICATE

THIS MAP HAS BEEN EXAMINED FOR CONFORMANCE WITH THE REQUIREMENTS OF THE LAND SURVEYOR'S ACT THIS 3 DAY OF August 1984

LAWRENCE J. BROCK RCE 13528
PLUMAS COUNTY SURVEYOR

COUNTY RECORDER'S CERTIFICATE

FILED THIS 3 DAY OF August 1984 AT 2:15 P.M. IN BOOK 6 OF RECORDS OF SURVEY AT PAGE 137 AT THE REQUEST OF THE COUNTY ENGINEER.

ILA DIGGS
COUNTY RECORDER

BY Patricia Lacey
DEPUTY

FEE: \$5.00
FILE NO. 748

BASIS OF BEARING

BASIS OF BEARING FOR THIS SURVEY IS THE EAST HALF OF THE SOUTH LINE OF SECTION 2, TAKEN AS N89°11'34"E PER 4 R.S. 57.

RECORD OF SURVEY

LOCATED IN THE SOUTHEAST QUARTER OF SECTION 2, T.26N., R.9E., M.D.M., PLUMAS COUNTY, CALIFORNIA.

JUDITH A. MURPHY

J & M ASSOCIATES
ENGINEERS & SURVEYORS

75 COURT STREET
QUINCY, CALIFORNIA 95971

P.O. BOX 749
916-283-1111

W.O. No. 820801

DATE: JUNE 1984
SHEET 1 OF 1