

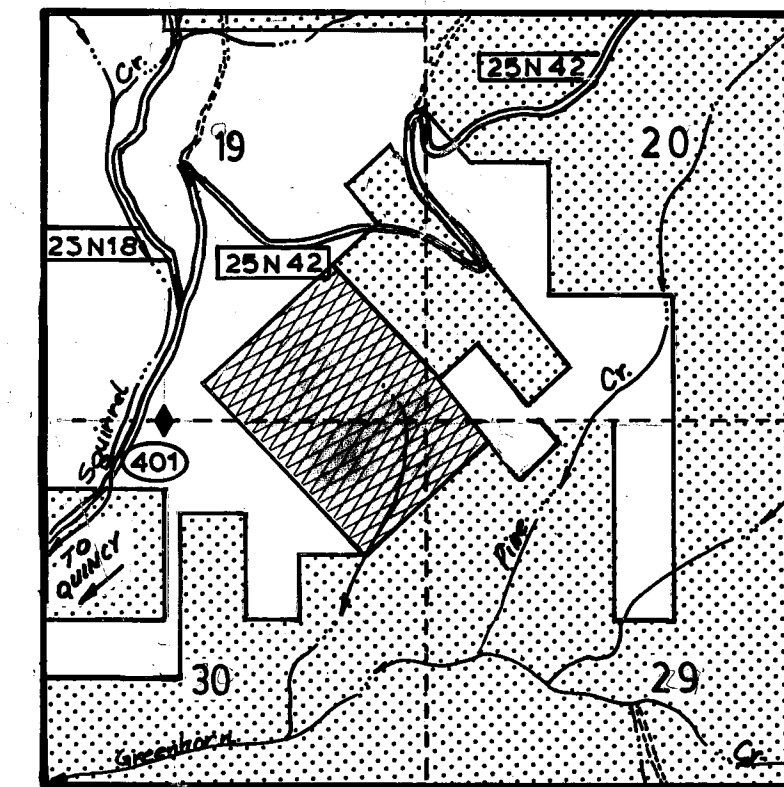
COUNTY RECORDER'S CERTIFICATE

FILED THIS 24TH DAY OF August, 1983, AT 2:30 P.M. IN BOOK 6 OF RECORD OF SURVEY, AT PAGE 143, AT THE REQUEST OF THE COUNTY ENGINEER.

FEE \$7.00 FILE NO. 1371

ILA DIGGS COUNTY RECORDER BY Beth Cammack DEPUTY

LOCATION MAP



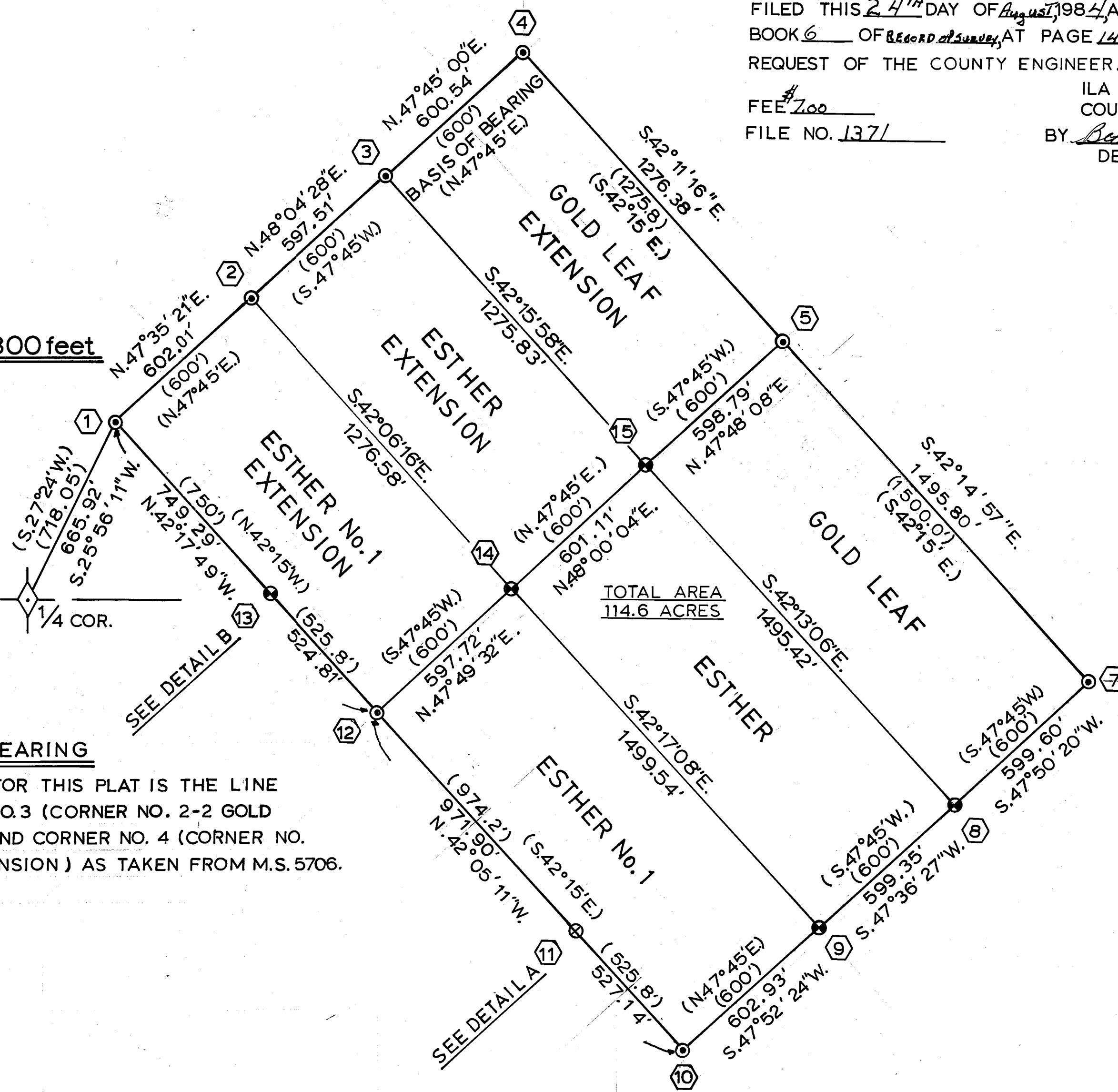
T.24N.

R.11E.



SCALE : 1 inch = 300 feet

SEC. 19 SEC. 30



TOTAL AREA 114.6 ACRES

BASIS OF BEARING

BASIS OF BEARING FOR THIS PLAT IS THE LINE BETWEEN CORNER NO. 3 (CORNER NO. 2-2 GOLD LEAF EXTENSION) AND CORNER NO. 4 (CORNER NO. 3 GOLD LEAF EXTENSION) AS TAKEN FROM M.S. 5706.

LEGEND

- Corner notes, see sheet 2.
Corner found, nothing set.
Corners reset with U.S.F.S. standard monument.
Point on line, set U.S.F.S. standard monument.
Record bearing and distance as per M.S. 5706.
1/4 cor., found B.L.M. brass cap w/ 6" B.O., B.T. N2°W, 29.7 FT.; 12" I.C., B.T. N87°E. 23 FT.; 32" W.F. SNAG B.T. S42°E. 22.7 FT.

NOTES:

- The standard U.S.F.S. monument is a Bernsten A-1-BR. Breakoff monument, consisting of a 2 in. dia. aluminum pipe, 27 1/2 in., with a magnet in a 2 1/2 in. x 5 in. cast aluminum base...
Record refers to the original field notes of mineral survey 5706, surveyed by William Watson, U.S. Mineral Surveyor, April 30, 1923...

RECORD OF SURVEY

RESURVEY OF A PORTION OF M.S. 5706, (NOT INCLUDING THE EXCEPTIONS TO THE PATENTS) LOCATED WITHIN SECTIONS 19, 20, 29, 30. T.24N., R.11E., M.D.M.

LOCATED IN THE UNINCORPORATED AREA OF PLUMAS COUNTY, CALIF. FOR THE UNITED STATES FOREST SERVICE.

RALPH W. KOEHNE L.S. 5147 DEC. 1983

SURVEYOR'S CERTIFICATE

THIS MAP CORRECTLY REPRESENTS A SURVEY MADE BY ME OR UNDER MY DIRECTION IN CONFORMANCE WITH THE REQUIREMENTS OF THE LAND SURVEYOR'S ACT AT THE REQUEST OF THE UNITED STATES FOREST SERVICE.

DEC. 19, 1983

RALPH KOEHNE L.S. 5147

COUNTY SURVEYOR'S CERTIFICATE

THIS MAP HAS BEEN EXAMINED FOR CONFORMANCE WITH THE REQUIREMENTS OF THE LAND SURVEYOR'S ACT.

THIS 24 DAY OF August 19

Lawrence Brock COUNTY SURVEYOR R.C.E. 13528