

CORNER NOTES

1 FOUND: A SCATTERED STONE MOUND FROM WHICH BEARS: A 43 IN. D.B.H. D.FIR S. 21° 54' W., 40.9 FT. AND A 18 IN. D.R.H. D.FIR N. 45° 00' W. 1.8 FT. MOUND SLID DOWNHILL. BOTH B.T.'S HAVE CLOSED FACES.

RECORD: A PINE POST 3½ FT. LONG 4 INS. SQUARE SET 18 INS. IN THE GROUND WITH ROCK MOUND, SCRIBED E. NO. 1 EX. 1-5706, WHENCE, A SPRUCE 30 INS. IN DIAMETER BEARS S. 31° 20' W., 38.0 FT. A SPRUCE 10 INS. IN DIAMETER BEARS N. 39° 20' W., 8.0 FT., BOTH BLAZED AND SCRIBED E. NO. 1 EX. 1-5706 B.T.

SET: A STANDARD U.S.F.S. MONUMENT 22 INS. IN THE GROUND, WITH A 24 IN. BASE DIAMETER STONE MOUND, CONSTRUCTED TO TOP OF MONUMENT, POSITIONED BY DISTANCE-DISTANCE INTERSECTION FROM ORIGINAL B.T.'S A 43 IN. DIA. D.F. S. 29° 36' W., 38.0 FT.; AN 18 IN. DIA. D.F. N. 32° 27' W., 8.0 FT.

2 FOUND: A 28 IN. P.PINE WITH CLOSED FACE, 34 IN. P.PINE WITH CLOSED FACE. CORNER MONUMENT OBLITERATED.

RECORD: A CEDAR POST 3½ FT. LONG, 4 INS. SQUARE, SET 18 INS. IN THE GROUND WITH STONE MOUND, SCRIBED E. EX. 3-E. NO. 1 EX. 2-5706, WHENCE, A PINE 24 INS. IN DIA. BEARS N. 40° 20' E. 25.0 FT., A PINE 24 INS. IN DIA. BEARS N. 73° 25' W. 31.0 FT., BOTH BLAZED AND SCRIBED E. EX. 3-E. NO. 1 EX. 2-5706, B.T.

SET: A STANDARD U.S.F.S. MONUMENT 22 INS. IN THE GROUND WITH A 24 IN. BASE DIA. STONE MOUND CONSTRUCTED TO TOP OF MONUMENT, POSITIONED BY DISTANCE-DISTANCE INTERSECTION FROM ORIGINAL B.T.'S. A 28 IN. P.PINE N. 42° 39' E., 25.0 FT.; A 34 IN. P.PINE N. 80° 11' W., 31.0 FT.

3 FOUND: A STONE MOUND FIRMLY IMBEDDED IN THE GROUND WITH A 40 d NAIL IN CENTER FROM WHICH BEARS: A 24 IN. D.B.H. STUMP N. 21° 04' W. 32.4 FT. WITH VISIBLE SCRIBING. SECOND ORIGINAL B.T. IS OBLITERATED.

RECORD: A CEDAR POST 3½ FT. LONG, 4 INS. SQUARE, SET 18 INS. IN THE GROUND WITH STONE MOUND, SCRIBED G.L. EX. 2-E. EX. 2-5706, WHENCE, A PINE 24 INS. IN DIA. BEARS N. 19° 30' W. 31.8 FT. A PINE 12 INS. IN DIA. BEARS N. 24° 15' E. 41.0 FT. BOTH BLAZED AND SCRIBED G.L. EX. 2 E. EX. 2-5706, B.T.

SET: A STANDARD U.S.F.S. MONUMENT 22 INS. IN THE GROUND WITH A 30 IN. BASE DIA. STONE MOUND CONSTRUCTED TO TOP OF MONUMENT FROM WHICH BEARS: A 17 IN. D.B.H. P.PINE S. 67° 00' E. 20.10 FT. (NEW B.T.). AN 8" D.B.H. CEDAR S. 18° 50' E. 13.85 FT. (NEW B.T.). POSITIONED MONUMENT IN CENTER OF FOUND STONE MOUND.

4 FOUND: A SMALL SCATTERED STONE MOUND WITH A 3 IN. X 3 IN. ROTTED WOOD POST ALONG SIDE WITH FAINT VISIBLE SCRIBING FROM WHICH BEARS: A 24 IN. PINE ROTTED STUMP, S. 73° 20' E. 4.2 FT. AND A 12 IN. PINE ROTTED STUMP, N. 43° 12' W. 30.8 FT. BOTH STUMPS HAD DETACHED SCRIBING NEARBY.

RECORD: A PINE POST 3½ FT. LONG 5 INS. SQUARE, SET 18 INS. IN THE GROUND WITH STONE MOUND, SCRIBED G.L. EX. 3-5706, WHENCE, A PINE 26 INS. IN DIA. BEARS S. 70° 20' E. 3.7 FT. A PINE 12 INS. IN DIA. BEARS N. 40° 25' W. 30.8 FT. BOTH BLAZED AND SCRIBED G.L. EX. 3-5706, U.S.S.A. 4.

SET: STANDARD U.S.F.S. MONUMENT 22 INS. IN THE GROUND WITH A 12 IN. BASE DIA. STONE MOUND CONSTRUCTED TO TOP OF MONUMENT, FROM WHICH BEARS: AN 8 IN. S.PINE MARKED "MS 5706 G.L.E. 3 BT" (NEW B.T.). A 6 IN. S.PINE MARKED "X" AT BREAST HEIGHT WITH A FOOT B.T. (NEW B.T.). MONUMENT POSITIONED IN CENTER OF FD. STONE MOUND.

5 FOUND: DISTURBED MOUND OF STONE, VERY LARGE, SCRIBED POST FROM WHICH BEARS: A 16 IN. DIA. D.FIR S. 17° 45' W. 24.1 FT. TREE HAS A CLOSED FACE AND A 14 IN. DIA. D.FIR N. 05° 52' W. 13.6 FT. TREE HAS A CLOSED BLAZE AND FOOT BLAZE.

RECORD: A CEDAR POST 3½ FT. LONG, 4 INS. SQUARE, SET 18 INS. IN THE GROUND WITH STONE MOUND SCRIBED G.L. 2-G.L. EX. 4-5706, WHENCE, A FIR 10 INS. IN DIA. BEARS S. 21° 15' W. 23.8 FT. A FIR 8 INS. IN DIA. BEARS N. 9° 40' W. 14.8 FT.

SET: A STANDARD U.S.F.S. MONUMENT 20 INS. IN THE GROUND WITH A 48 IN. BASE DIA. STONE MOUND CONSTRUCTED TO TOP OF MONUMENT, POSITIONED BY DISTANCE-DISTANCE INTERSECTION FROM ORIGINAL B.T.'S. A 16 IN. DIA D.F. S. 22 10' W. 23.8 FT., A 14 IN. DIA. D.F. N. 11° 47' W. 14.8 FT.

7 FOUND: DISTURBED STONE MOUND, FROM WHICH BEARS: A 12 IN. D.B.H. D.FIR N. 46° 05' E. 12.9 FT. AND A 17 IN. D.B.H. W.FIR N. 74° 02' E. 10.7 FT.

RECORD: A CEDAR POST 3½ FT. LONG 4 INS. SQUARE SET 18 INS. IN THE GROUND WITH STONE MOUND, SCRIBED G.L. 3-5706, WHENCE A SPRUCE 9 INS. IN DIA. BEARS N. 60° 10' E. 14.1 FT. A WHITE FIR 10 INS. IN DIA. BEARS N. 85° 05' E. 12.5 FT. BOTH BLAZED AND SCRIBED G.L. 3-5706 B.T.

SET: SET A STANDARD U.S.F.S. MONUMENT 22 INS. IN THE GROUND WITH A 30 IN. BASE DIA. STONE MOUND CONSTRUCTED TO TOP OF MONUMENT. POSITIONED BY DISTANCE-DISTANCE INTERSECTION FROM ORIGINAL B.T.'S. A 12 IN. DIA D.F. N. 52 54' E., 14.1 FT. A 17 IN. W.F. N. 78° 33' E., 12.5 FT.

8 FOUND: A POST IN A MOUND OF STONE, UNDISTURBED FROM WHICH BEARS: A 16 IN. D.B.H. P.PINE N. 46° 00' W. 6.8 FT. WITH PARTIALLY OPENED FACE AND VISIBLE SCRIBING AND A 12 IN. D.B.H. P.PINE S. 39° 00' E. 2.7 FT. WITH PARTIALLY OPENED FACE AND VISIBLE SCRIBING.

RECORD: AN OAK POST 3½ FT. LONG 4 INS. SQUARE, SET 18 INS. IN THE GROUND WITH STONE MOUND SCRIBED G.L. 4-E. 2-5706, WHENCE, A PINE 12 INS. IN DIA. BEARS N. 57° 15' W. 6.8 FT. A PINE 10 INS. IN DIA. BEARS S. 49° 30' E. 2.7 FT. BOTH BLAZED AND SCRIBED G.L. 4-E. 2-5706 B.T.

SET: NOTHING SET.

9 FOUND: CORNER MONUMENT OBLITERATED. A 32 IN. D.B.H. P.PINE WITH PARTIALLY CLOSED FACE, SCRIBING VISIBLE AND REMAINS OF AN OAK AND STUMP HOLE AT RECORD BEARING AND DISTANCE.

RECORD: AN OAK POST 3½ FT. LONG 4 INS. SQUARE SET 18 INS. IN THE GROUND WITH STONE MOUND, SCRIBED E. 3-E. NO. 1. 4-5706, WHENCE, A PINE 2 FT. DIA. BEARS S. 86° 50' E. 24.6 FT. AN OAK 10 INS. DIA. BEARS N. 17° 10' E. 25.3 FT., BOTH BLAZED AND SCRIBED E. 3-E. NO. 1, 4-5706 B.T.

SET: NOTHING SET.

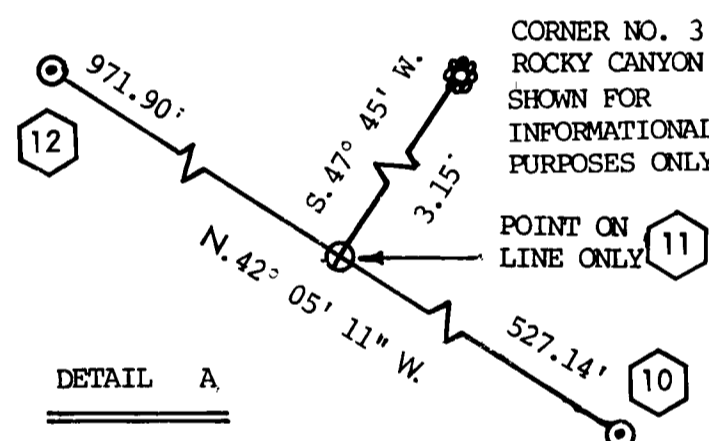
10 FOUND: A MOUND OF STONE (APPEARED MOUND SLIPPED) FROM WHICH BEARS: A 24 IN. DIA. P.PINE STUMP N. 89° 30' W. 23.4 FT. TREE IS BADLY DECAYED, NO REMAINING SCRIBING AND A 26 IN. D.B.H. CEDAR N. 80° 00' E. 40.0 FT. SCRIBED NO. 13 5706 B.T.

RECORD: A CEDAR POST 3½ FT. LONG, 4 INS. SQUARE, SET 18 INS. IN THE GROUND, SCRIBED E. NO. 1-3-5706, WHENCE, A PINE 2 FT. IN DIA. BEARS N. 89° 30' W. 23.4 FT. A CEDAR 20 INS. IN DIA. BEARS N. 80° 20' E. 40 FT., BOTH BLAZED AND SCRIBED E. NO. 1-3-5706 B.T.

SET: A STANDARD U.S.F.S. MONUMENT 22 INS. IN THE GROUND WITH A 24 IN. BASE DIA. STONE MOUND CONSTRUCTED TO TOP OF MONUMENT, FROM WHICH BEARS A 9 IN. D.B.H. D.FIR N. 3° 00' E. 11.7 FT. SCRIBED M.S. 5706 E NO. 1-3 BT (NEW B.T.). POSITIONED MONUMENT IN CENTER OF FOUND STONE MOUND.

11 FOUND: A STONE MOUND WITH A 6 PENNY NAIL IN A POST 3 INS. X 3 INS. X 18 INS. SCRIBED 5706 RC 3 FROM WHICH BEARS: A 14 IN. D.B.H. OAK S. 17° 55' E. 27.7 FT. WITH A CLOSED FACE AND A 19 IN. D.B.H. STANDING SNAG S. 29° 33' W. 16.2 FT. SCRIBED RC 3 5706.

RECORD: A SUGAR PINE POST 3½ FT. LONG, 4 INS. SQUARE SET 18 INS. IN THE GROUND WITH STONE MOUND, SCRIBED R.C. 3-5706, WHENCE, AN OAK 10 INS. IN DIA BEARS S. 16° 15' E. 27.7 FT. A PINE 18 INS. IN DIA. BEARS S. 29° W. 16.2 FT., BOTH BLAZED AND SCRIBED R.C. 3-5706, B.T.



DETAIL A

SET: A STANDARD U.S.F.S. MONUMENT 22 INS. IN THE GROUND AS "POINT ON LINE ONLY", NO STONE MOUND CONSTRUCTED. NOTHING SET AT CORNER NO. 3, ROCKY CANYON LODGE.

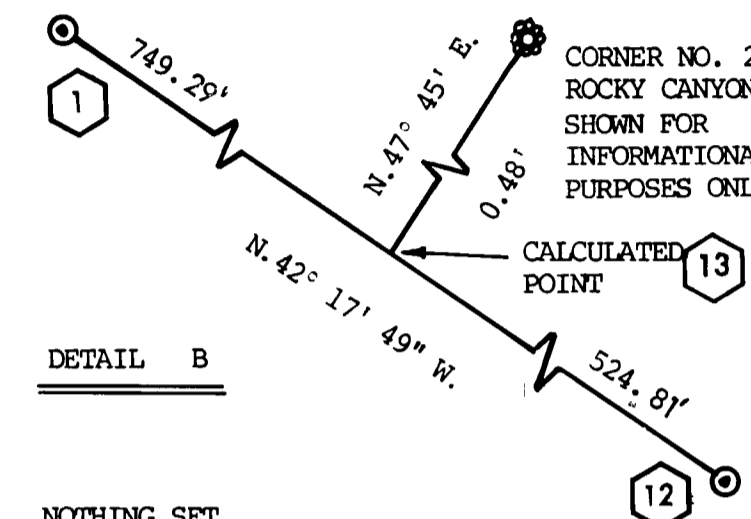
12 FOUND: CORNER MONUMENT OBLITERATED. A 34 IN. DIA. DECAYED STUMP IN STUMP HOLE.

RECORD: A PINE POST 3½ FT. LONG, 4 INS. SQUARE SET 18 INS. IN THE GROUND WITH STONE MOUND, SCRIBED E. NO. 1-2-E. NO. 1 EX. 4-5706, WHENCE, A PINE 30 INS. IN DIA. BEARS N. 45° 30' E. 17.3 FT. A PINE 20 INS. IN DIA. BEARS N. 29° 30' W. 35.5 FT. BLAZED AND SCRIBED, E. NO. 1-2. E. NO. 1, EX. 4-5706, B.T.

SET: A STANDARD U.S.F.S. MONUMENT 22 INS. IN THE GROUND WITH A 24 IN. BASE DIAMETER STONE MOUND TO TOP OF MONUMENT FROM WHICH BEARS: A 7 IN. D.B.H. CEDAR N. 38° 30' E. 12.0 FT. SCRIBED MS 5706 E. NO. 1 2 B.T. (NEW B.T.) A 11 IN. D.B.H. P.PINE S. 55° 45' E. 39.1 FT. SCRIBED MS 5706 E. NO. 1 E. 4 BT (NEW B.T.) POSITIONED CORNER AT RECORD BEARING AND DISTANCE FROM FOUND STUMP, SAID POSITION FITS: THE 15 FT. CREEK CALL, A STUMP HOLE AT RECORD BEARING AND DISTANCE; AND MEASUREMENTS FROM THREE CONTIGUOUS LODGE CLAIMS. SAID P.PINE STUMP BEARS N. 45° 30' E., 17.3 FT. FROM MONUMENT.

13 FOUND: A MOUND OF STONE WITH A 36 IN. BASE DIA., 6 INS. IN HEIGHT IMBEDDED ON SOUTH EDGE OF DRY WASH FROM WHICH BEARS: A 15 IN. D.B.H. BLACK OAK N. 19° W. 23.2 FT. WITH SCRIBING AND A 11 IN. D.B.H. BLACK OAK S. 61° E. 23.8 FT. WITH SCRIBING.

RECORD: A PINE POST 3½ FEET LONG 4 INS. SQUARE, SET 18 INS. IN THE GROUND WITH STONE MOUND, SCRIBED R.C. 2-5706, WHENCE, AN OAK 12 INS. IN DIA. BEARS N. 32° 30' E. 23.2 FT. AN OAK 7 INS. IN DIA. BEARS S. 60° 45' E. 23.8 FT., BOTH BLAZED AND SCRIBED R.C. 2-5706, B.T.



DETAIL B

SET: NOTHING SET.

14 FOUND: ORIGINAL CORNER IS OBLITERATED, FALLS IN BOTTOM OF DRAINAGE. A 16 IN. D.B.H. BLACK OAK WITH OPEN BLAZE SCRIBING VISIBLE "EX." A DECOMPOSED STUMP WITH A FRAGMENT SCRIBED "B.T." FOUND 15 FT. DOWNHILL FROM STUMP.

RECORD: A CEDAR POST 3½ FT. LONG, 4 INS. SQUARE, SET 18 INS. IN THE GROUND WITH STONE MOUND, SCRIBED E. 4-E. EX. 4-E. NO. 1. 1-E. NO. 1 EX. 3-5706, WHENCE, AN OAK 12 INS. IN DIA. BEARS N. 32½° E. 42.5 FT. A PINE 16 INS. IN DIA. BEARS S. 80 E. 28.2 FT. BOTH BLAZED AND SCRIBED E. 4-E. EX. 4-E NO. 1. 1.-E. NO. 1 EX. 3-5706, B.T.

SET: NOTHING SET.

15 FOUND: MOUND OF STONE, FROM WHICH BEARS: A 20 IN. D.B.H. P.PINE S. 15° 58' W. 17.3 FT. AND A 13 IN. D.B.H. FIR S. 72° 47' W. 14.8 FT.

RECORD: A CEDAR POST 3½ FT. LONG, 4 INS. SQUARE, SET 18 INS. IN THE GROUND WITH STONE MOUND SCRIBED G.L. 1-G.L. EX. 1-E. 1-E. EX. 1, 5706, WHENCE, A PINE 14 INS. IN DIA. BEARS S. 16° 30' W. 17.3 FT. A FIR 8 INS. IN DIA. BEARS S. 71° 50' W. 14.8 FT. BLAZED AND SCRIBED G.L. 1-G.L. EX. 1-E. 1-E. EX. 1-5706, B.T.

SET: NOTHING SET.