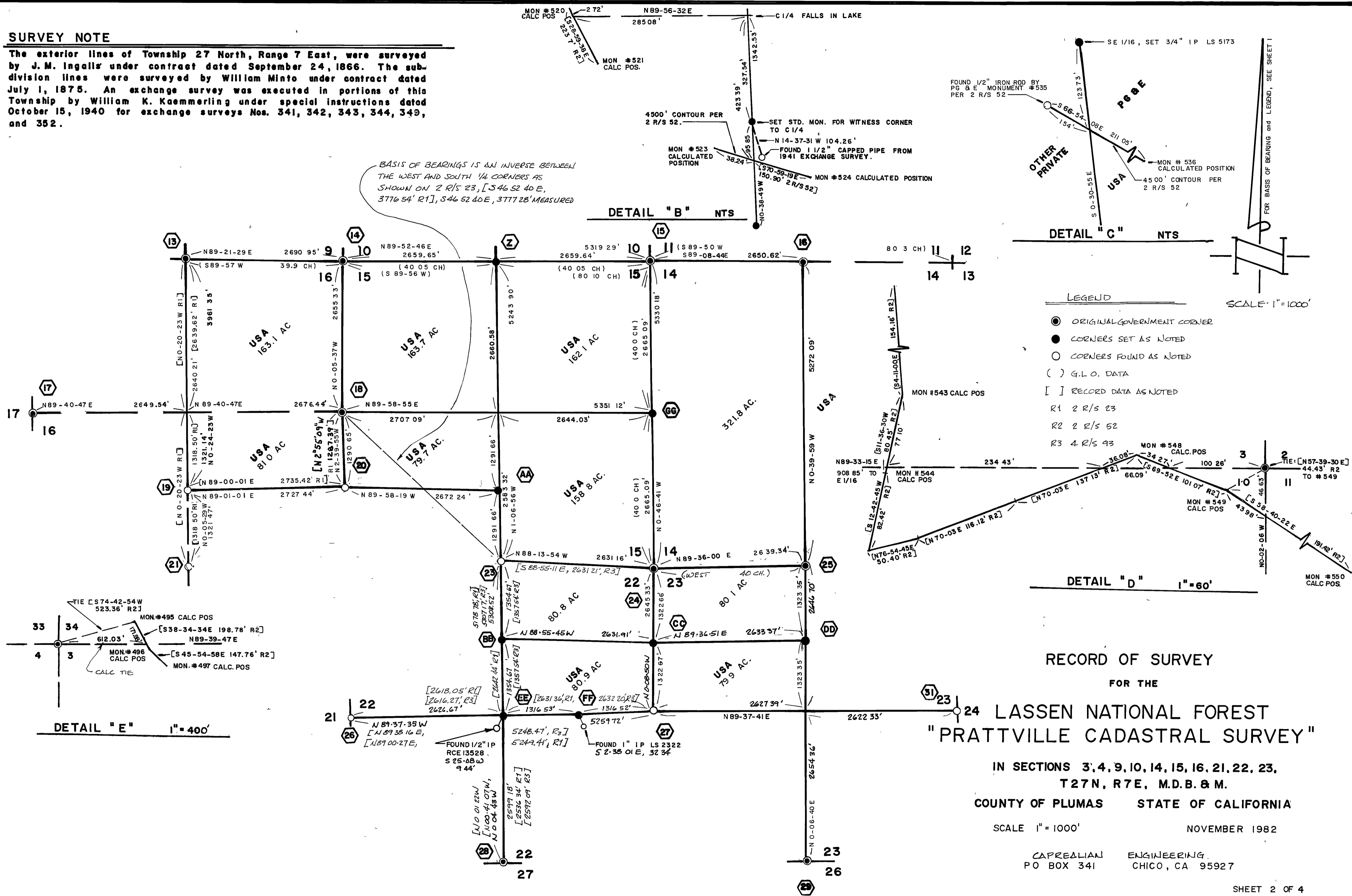


SURVEY NOTE

The exterior lines of Township 27 North, Range 7 East, were surveyed by J. M. Ingalls under contract dated September 24, 1866. The subdivision lines were surveyed by William Minto under contract dated July 1, 1875. An exchange survey was executed in portions of this Township by William K. Kaemmerling under special instructions dated October 15, 1940 for exchange surveys Nos. 341, 342, 343, 344, 349, and 352.

BASIS OF BEARINGS IS AN INVERSE BETWEEN THE WEST AND SOUTH 1/4 CORNERS AS SHOWN ON 2 R/S 23, [S 46 52 40 E, 3776 54' R1], [S 46 52 40 E, 3777 28' MEASURED]



DETAIL "B" NTS

DETAIL "C" NTS

LEGEND

- ORIGINAL GOVERNMENT CORNER
- CORNERS SET AS NOTED
- CORNERS FOUND AS NOTED
- () G.L.O. DATA
- [] RECORD DATA AS NOTED
- R1 2 R/S 23
- R2 2 R/S 52
- R3 4 R/S 93

SCALE: 1" = 1000'

DETAIL "D" 1" = 60'

DETAIL "E" 1" = 400'

RECORD OF SURVEY
 FOR THE
LASSEN NATIONAL FOREST
"PRATTVILLE CADASTRAL SURVEY"
 IN SECTIONS 3, 4, 9, 10, 14, 15, 16, 21, 22, 23,
 T27N, R7E, M.D.B. & M.
 COUNTY OF PLUMAS STATE OF CALIFORNIA
 SCALE 1" = 1000' NOVEMBER 1982

CAPRELIAN ENGINEERING
 P.O. BOX 341 CHICO, CA 95927