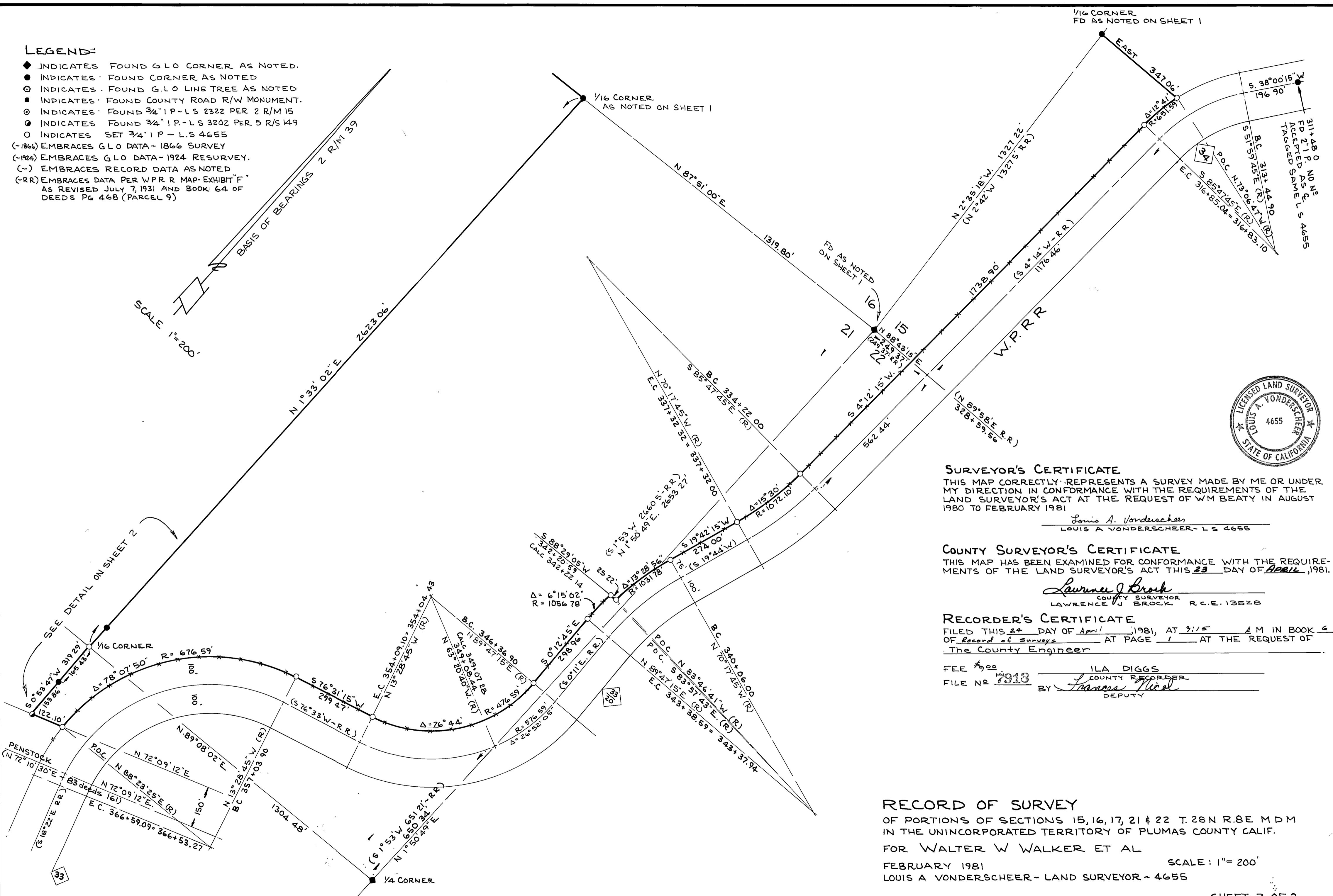


LEGEND:

- ◆ INDICATES FOUND G.L.O. CORNER AS NOTED.
- INDICATES FOUND CORNER AS NOTED
- ⊙ INDICATES FOUND G.L.O. LINE TREE AS NOTED
- INDICATES FOUND COUNTY ROAD R/W MONUMENT.
- ⊖ INDICATES FOUND 3/4" I.P.-L.S. 2322 PER 2 R/M 15
- ⊖ INDICATES FOUND 3/4" I.P.-L.S. 3202 PER 5 R/S 149
- INDICATES SET 3/4" I.P.-L.S. 4655
- (-1866) EMBRACES G.L.O. DATA - 1866 SURVEY
- (-1924) EMBRACES G.L.O. DATA - 1924 RESURVEY.
- (-) EMBRACES RECORD DATA AS NOTED
- (-RR) EMBRACES DATA PER W.P.R. MAP-EXHIBIT "F" AS REVISED JULY 7, 1931 AND BOOK 64 OF DEEDS PG 468 (PARCEL 9)

SCALE 1"=200'

BASIS OF BEARINGS 2 R/M 39



SURVEYOR'S CERTIFICATE

THIS MAP CORRECTLY REPRESENTS A SURVEY MADE BY ME OR UNDER MY DIRECTION IN CONFORMANCE WITH THE REQUIREMENTS OF THE LAND SURVEYOR'S ACT AT THE REQUEST OF WM BEATY IN AUGUST 1980 TO FEBRUARY 1981

*Louis A. Vonderscheer*  
 LOUIS A. VONDERSCHER - L.S. 4655

COUNTY SURVEYOR'S CERTIFICATE

THIS MAP HAS BEEN EXAMINED FOR CONFORMANCE WITH THE REQUIREMENTS OF THE LAND SURVEYOR'S ACT THIS 23 DAY OF April, 1981.

*Lawrence J. Brock*  
 COUNTY SURVEYOR  
 LAWRENCE J. BROCK R.C.E. 13528

RECORDER'S CERTIFICATE

FILED THIS 24 DAY OF April, 1981, AT 9:15 A.M. IN BOOK 6 OF Record of Surveys AT PAGE 1 AT THE REQUEST OF The County Engineer

FEE \$9.00 BY ILA DIGGS  
 FILE NO 7918 COUNTY RECORDER  
Frances Noel DEPUTY

RECORD OF SURVEY

OF PORTIONS OF SECTIONS 15, 16, 17, 21 & 22 T. 28N R. 8E M.D.M. IN THE UNINCORPORATED TERRITORY OF PLUMAS COUNTY CALIF. FOR WALTER W WALKER ET AL  
 FEBRUARY 1981  
 LOUIS A VONDERSCHER - LAND SURVEYOR - 4655

SCALE: 1"=200'