

BASIS OF BEARING:

BASIS OF BEARING IS THE EAST LINE OF THE SE 1/4 SHOWN AS N0°36'30\"/>

LEGEND:

- ◆ — FOUND CORNERS (SEE CORNER NOTES SHEET 3 OF 3)
- — CORNERS SET, U.S.F.S. MONUMENTS (SEE CORNER NOTES SHEET 3 OF 3)
- — WITNESS CORNER (W.C.) (SEE CORNER NOTES SHEET 3 OF 3)
- — LINES CALCULATED
- — LINES MEASURED
- — LINES MEASURED AND MARKED AND POSTED (NATIONAL FOREST BOUNDARY)
- R — RECORD AS PER BK. 5 R/S PG. 124
- M — MEASURED
- ⬡ — CORNER NOTES (SEE APPROPRIATE NUMBER SHEET 3 OF 3)
- ⓐ-ⓑ — FOUND PIPES (SEE APPROPRIATE LETTER ON DETAIL SHEET 2 OF 3)
- (G.L.O.) — DATA FROM GOVERNMENT LAND OFFICE FIELD NOTES 1870
- U.S.F.S. — UNITED STATES FOREST SERVICE
- PVT. — PRIVATE

NOTE:

U.S.F.S. MONUMENTS SET IN THIS SURVEY ARE 2 1/2\"/>

SURVEYOR'S CERTIFICATE

This map correctly represents a survey made by me or under my direction in conformance with the requirements of the Land Surveyors Act at the request of Plumas National Forest in June, 1981.

Robert A. Ball
 Robert A. Ball L.S. 4550

COUNTY SURVEYOR'S CERTIFICATE

This map has been examined for conformance with the requirements of the Land Surveyors Act this 28th day of August, 1981.

Lawrence J. Brock
 Lawrence J. Brock R.C.E. 13528
 Plumas County Surveyor

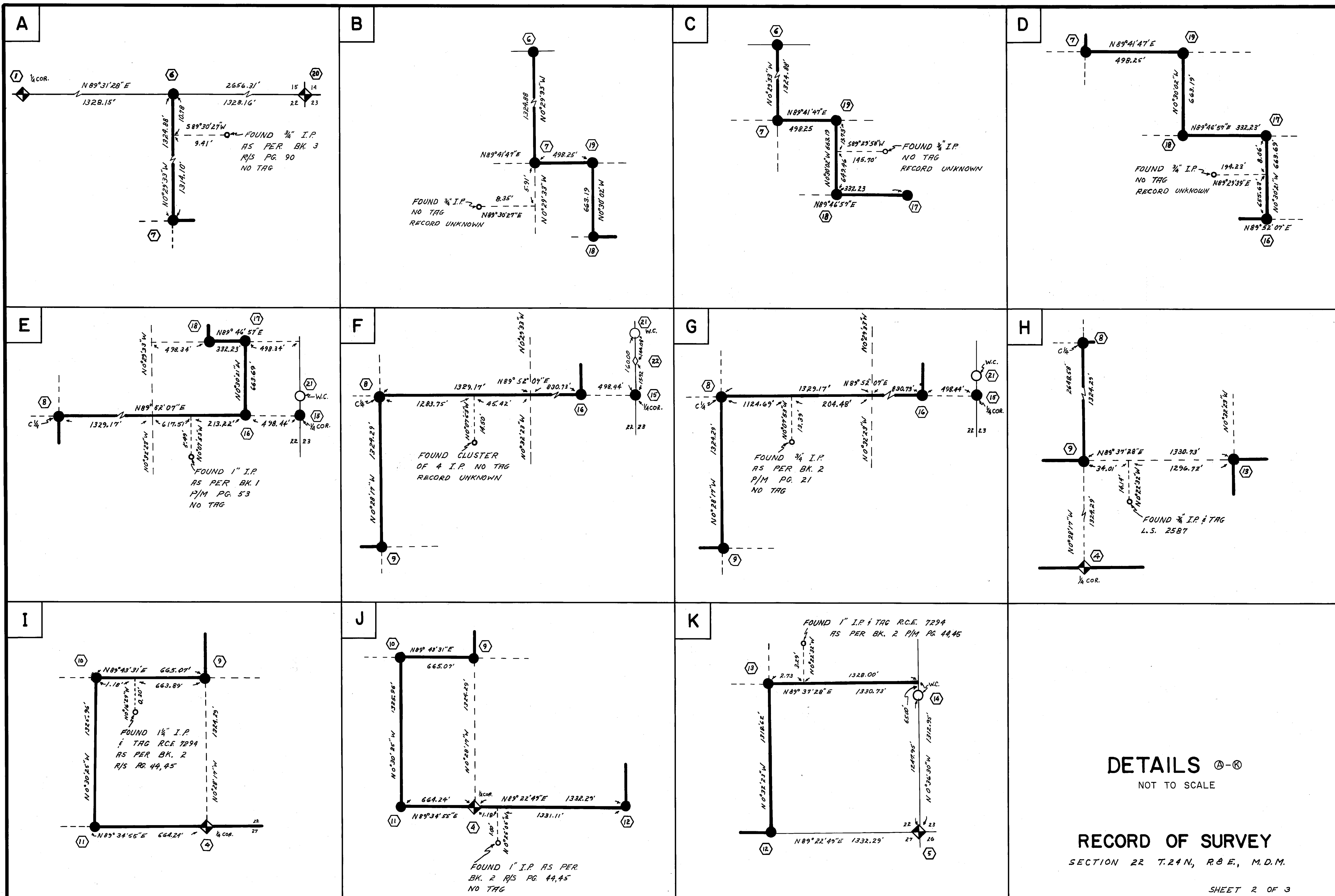
RECORDER'S CERTIFICATE

Filed this 28th day of August, 1981 at 2:11 P.M. in Book 6 of Records of Surveys at page 14, at the request of the County Engineer.

Fee \$9.00
 File No. 1984
 Ila Diggs
 County Recorder
 By *Isabelle Andrews*
 Deputy

RECORD OF SURVEY

FOR
 THE PLUMAS NATIONAL FOREST
 SECTION 22, TRAN., R.B.E., M.D.M.
 PLUMAS COUNTY, CALIFORNIA
 MAY 1980
 SCALE: 1\"/>



DETAILS A-K
NOT TO SCALE

RECORD OF SURVEY
SECTION 22 T.24 N., R.8 E., M.D.M.

SHEET 2 OF 3

CORNER NOTES

- ① $\frac{15}{22}$ FOUND A 2 1/2" I.P. WITH 3" B.L.M. BRASS CAP IN ROCK MOUND STAMPED, TRANRBE 1/4 S15, S22 1970, FROM WHICH: A CEDAR 28" DIA. BEARS S11°45'E 36.3' DISTANCE; A WHITE FIR 14" DIA. BEARS N10°E 27.1' DISTANCE; A CEDAR 5" DIA. BEARS S55°W 36.0' DISTANCE.
- ② $\frac{21}{22}$ FOUND A 2 1/2" I.P. WITH 3" B.L.M. BRASS CAP IN ROCK MOUND STAMPED, TRANRBE 1/4 S21, S22 1970, FROM WHICH: A PONDEROSA PINE 31" DIA. BEARS N87°E 152' DISTANCE; A PONDEROSA PINE 1" DIA. BEARS N52°E 26.1' DISTANCE; A FIR 6" DIA. BEARS N34°W 17.2' DISTANCE.
- ③ $\frac{21}{28}$ FOUND A 2 1/2" I.P. WITH 3" B.L.M. BRASS CAP IN ROCK MOUND STAMPED, TRANRBE S21, S22, S27, S28 1970, FROM WHICH: A SUGAR PINE 34" DIA. BEARS N38°E 7.9' DISTANCE; A WHITE FIR 21" DIA. BEARS S21°E 43.6' DISTANCE; A WHITE FIR 40" DIA. BEARS N60°W 9.9' DISTANCE; A DOUGLAS FIR 5" DIA. BEARS S24°W 24.4' DISTANCE.
- ④ $\frac{22}{27}$ FOUND A 2 1/2" I.P. WITH 3" B.L.M. BRASS CAP IN ROCK MOUND STAMPED, TRANRBE 1/4 S22, S27 1970, FROM WHICH: A WHITE FIR 30" DIA. BEARS N19°45'W 7.9' DISTANCE; A WHITE FIR 11" DIA. BEARS S29°E 28.1' DISTANCE; A WHITE FIR 20" DIA. BEARS S14°W 15.8' DISTANCE.
- ⑤ $\frac{22}{27}$ FOUND A 2 1/2" I.P. WITH 3" B.L.M. BRASS CAP IN ROCK MOUND STAMPED, TRANRBE S22, S23, S26, S27 1970, FROM WHICH: A DOUGLAS FIR 14" DIA. BEARS N41°E 22.1' DISTANCE; A DOUGLAS FIR 20" DIA. BEARS S55°E 12.5' DISTANCE; A CEDAR 10" DIA. BEARS S4°W 33.0' DISTANCE; A DOUGLAS FIR 18" DIA. BEARS N72°W 34.3' DISTANCE.
- ⑥ $\frac{15}{22}$ SET U.S.F.S. MONUMENT IN ROCK MOUND FROM WHICH: A DOUGLAS FIR 14" DIA. BEARS S55°E 32.8' DISTANCE SCRIBED E 1/16 S22BT; A PONDEROSA PINE 18" DIA. BEARS N9°E 29.3' DISTANCE SCRIBED E 1/16 S15BT. SEE DETAIL "A" SHEET 2 OF 3.
- ⑦ NE 1/4 SET U.S.F.S. MONUMENT FROM WHICH: A DOUGLAS FIR 13" DIA. BEARS S9°30'E 18.2' DISTANCE SCRIBED NE 1/4 S22BT; A DOUGLAS FIR 16" DIA. BEARS S78°W 23.2' DISTANCE SCRIBED NE 1/4 S22BT. SEE DETAIL "B" SHEET 2 OF 3.
- ⑧ C 1/4 SET U.S.F.S. MONUMENT FROM WHICH: A DOUGLAS FIR 10" DIA. BEARS N69°E 24.4' DISTANCE SCRIBED C 1/4 S22BT; A CEDAR 8" DIA. BEARS S24°30'W 9.4' DISTANCE SCRIBED C 1/4 S22BT.
- ⑨ CS 1/16 SET U.S.F.S. MONUMENT FROM WHICH: A WHITE FIR 14" DIA. BEARS N77°W 59.0' DISTANCE SCRIBED CS 1/16 S22BT; A PONDEROSA PINE 16" DIA. BEARS N27°30'W 23.8' DISTANCE SCRIBED CS 1/16 S22BT. SEE DETAIL "H" SHEET 2 OF 3.
- ⑩ CE SW 1/4 SET U.S.F.S. MONUMENT. SEE DETAIL "I" SHEET 2 OF 3.
- ⑪ $\frac{22}{27}$ FOUND 1" I.P. STAMPED R.C.E. 7294 AS PER BK. 2 R/S PG. 45. REMONUMENTED WITH U.S.F.S. MONUMENT.
- ⑫ $\frac{22}{27}$ FOUND 1 1/4" I.P. AS PER BK. 2 R/S PG. 45. REMONUMENTED WITH U.S.F.S. MONUMENT SET IN ROCK MOUND FROM WHICH: A DOUGLAS FIR 15" DIA. BEARS S15°30'E 32.9' DISTANCE SCRIBED E 1/16 S27BT; A DOUGLAS FIR 20" DIA. BEARS N72°30'W 24.7' DISTANCE SCRIBED E 1/16 S22BT.
- ⑬ SE 1/16 SET A U.S.F.S. MONUMENT FROM WHICH: A WHITE FIR 26" DIA. BEARS S3°E 58.5' DISTANCE SCRIBED SE 1/16 S22BT; A PONDEROSA PINE 27" DIA. BEARS S67°W 65.9' DISTANCE SCRIBED SE 1/16 S22BT. SEE DETAIL "K" SHEET 2 OF 3.
- ⑭ CORNER POSITION FALLS IN MEADOW VALLEY CREEK. SET U.S.F.S. MONUMENT S0°36'30"E 65.0' AS A WITNESS CORNER FROM WHICH: A PONDEROSA PINE 39" DIA. BEARS S64°E 57.4' DISTANCE SCRIBED "X" AT D.B.H. AND "BT" AT BASE; A PONDEROSA PINE 6" DIA. BEARS S45°W 41.7' DISTANCE SCRIBED "X" AT D.B.H. AND "BT" AT BASE; A PONDEROSA PINE 5" DIA. BEARS S85°30'W 17.1' DISTANCE SCRIBED "X" AT D.B.H. AND "BT" AT BASE.
- ⑮ $\frac{22}{23}$ FOUND 1/2" CARRIAGE BOLT IN ROCK MOUND AS PER BK. 2 P/M PG. 53. BOLT FALLS AT EDGE OF A BRICK BARN. THERE IS NO EVIDENCE OF G.L.D. BEARING TREES BECAUSE OF PASTURE AND FARMING ACTIVITIES. REMOVED STONES FROM MOUND AND FOUND REMAINS OF OLD WOOD POST BURIED UNDER MOUND. THIS CORNER POSITION MATCHES G.L.D. CALLS:

RECORD:	MEASURED:
19.00ch MEADOW VALLEY CREEK	19.00ch MEADOW VALLEY CREEK (ORIGINAL BED)
33.00ch LEAVE VALLEY BEGIN ASCENT	32.90ch LEAVE VALLEY BEGIN ASCENT
40.00ch SET POST... 1/4 COR	39.63ch 1/4 COR
42.10ch JACK MILL RACE...	41.73ch JACK MILL RACE
53.75ch JACK MILL RACE...	53.38ch JACK MILL RACE

 REMONUMENTED WITH U.S.F.S. MONUMENT IN SAID ROCK MOUND FROM WHICH: A CEDAR 27" DIA. BEARS S83°W 19.4' DISTANCE BARK SCRIBED 1/4 S22BT.

- ⑯-⑰ 1/1024 SET U.S.F.S. MONUMENT. SEE DETAILS "C" "D" "E" SHEET 2 OF 3
- ⑱ $\frac{15}{22}$ FOUND 1/2" I.P. IN ROCK MOUND TAGGED R.C.E. 13528 AS PER BK. 4 R/S PG. 113 AND BK. 2 R/S PG. 44-45. THIS CORNER ACCEPTED AS BEST AVAILABLE EVIDENCE.
- ⑳ SET U.S.F.S. MONUMENT AS WITNESS CORNER TO 1/4 COR. S22, S23 FROM WHICH: A DOUGLAS FIR 12" DIA. BEARS S39°30'E 18.8' DISTANCE SCRIBED "X" AT D.B.H. AND "BT" AT BASE; A PONDEROSA PINE 24" DIA. BEARS N88°W 23.8' DISTANCE SCRIBED "X" AT D.B.H. AND "BT" AT BASE. WITNESS CORNERS BEARS N0°30'35"W 16000' DISTANCE FROM SAID 1/4 COR.
- ㉑ PROPORTIONED CALCULATED POSITION OF 1/4 CORNER DERIVED FROM BK. 2 R/S PG. 44, 45. NOTHING FOUND, NOTHING SET.

RECORD OF SURVEY
 SECTION 22 T.24N, R.8E, M.D.M.
 SHEET 3 OF 3