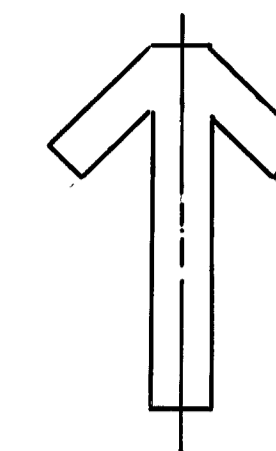


NORTH



SCALE 1"=400'
Basis of bearings is the record bearing (S89°52'W) for the south line of Sec 16 from the original GLO plat.

LEGEND

- Found point as described
- Set 1/4" ip in MOR, with BT's as described, for 1/4 cor.
- Set 2 1/2" ip with 3 dia. brass cap in MOR, with BT's as described, for 1/4 cor (except ctr. of sec)
- Lassen National Forest boundary
- wf = white fir
- yp = yellow pine
- jp = Jeffrey pine
- ic = incense cedar
- lp = lodgepole

CERTIFICATES

SURVEYOR'S

This map correctly represents a survey made by me in conformance with the requirements of the Land Surveyors Act, in July, 1981, at the request of the U.S.D.A. FOREST SERVICE, and JAMES R. LEE.

James L. Uptegrove
James L. Uptegrove, Calif. R.C.E. No. 22148



COUNTY SURVEYOR'S

This map has been examined this 4th day of SEPTEMBER, 1981, for conformance with the requirements of the Land Surveyors Act.

Lawrence J. Brock
Lawrence J. Brock, Calif. R.C.E. No. 13528
Plumas Co. Engineer

RECORDER'S

Filed this 4th day of SEPTEMBER, 1981 at 3:00 P.M., in Book 6 of Record of Surveys, at page 17, at the request of the Plumas Co. Engineer.

Fee \$5.00 File No. 22148

By, Francon Nicol, Deputy
Ild. Diggs, Plumas County Recorder

RECORD OF SURVEY

FOR US.D.A. FOREST SERVICE & JAMES R. LEE

OF SEC. 16, T. 29N., R. 6E., M.D.B. & M.

PLUMAS COUNTY

CALIFORNIA

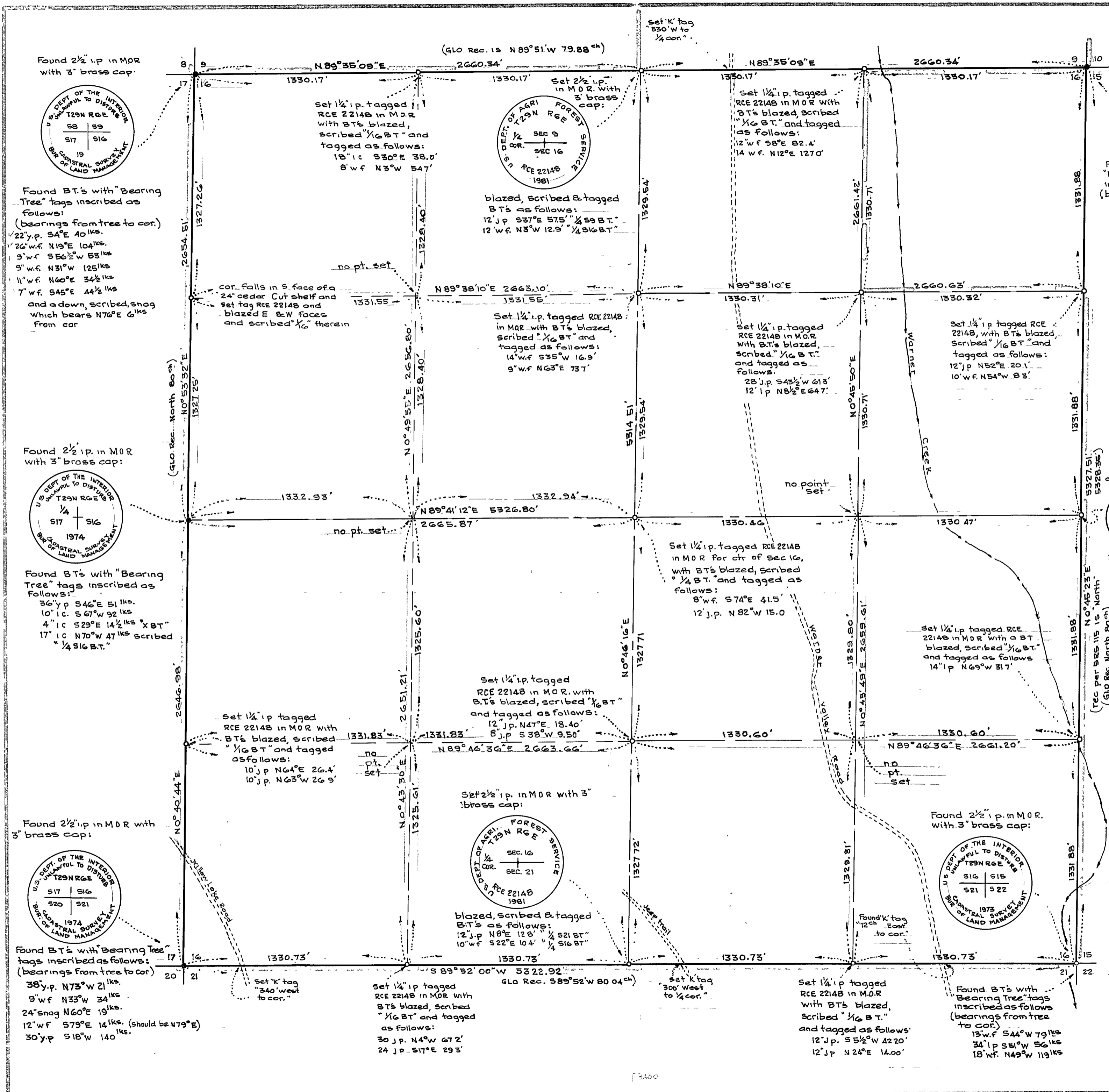
JULY, 1981

UPTEGROVE ENGINEERING

SCALE: 1"=400'

SHEET 1 OF 1

6 RS 19



1:400