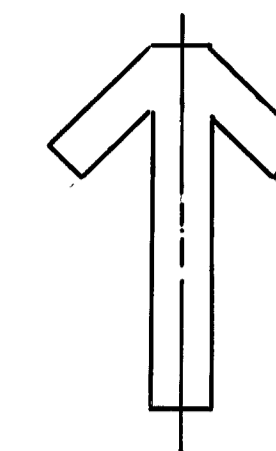


NORTH



LEGEND

- Found point as described
- Set 1/4" ip in MOR, with BT's as described, for 1/4 cor.
- Set 2 1/2" ip with 3" dia. brass cap in MOR, with BT's as described, for 1/4 cor (except ctr. of sec)
- Lassen National Forest boundary
- wf = white fir
- yp = yellow pine
- jp = Jeffrey pine
- ic = incense cedar
- lp = lodgepole

SCALE 1"=400'  
 Basis of bearings is the record bearing (S89°52'W) for the south line of Sec 16 from the original GLO plat.

CERTIFICATES

SURVEYOR'S

This map correctly represents a survey made by me in conformance with the requirements of the Land Surveyors Act, in July, 1981, at the request of the U.S.D.A. FOREST SERVICE, and JAMES R. LEE.

*James L. Uptegrove*  
 James L. Uptegrove, Calif. R.C.E. No. 22148



COUNTY SURVEYOR'S

This map has been examined this 4<sup>th</sup> day of SEPTEMBER, 1981, for conformance with the requirements of the Land Surveyors Act.

*Lawrence J. Brock*  
 Lawrence J. Brock, Calif. R.C.E. No. 13528  
 Plumas Co. Engineer

RECORDER'S

Filed this 4<sup>th</sup> day of SEPTEMBER, 1981 at 3:00 P.M., in Book 6 of Record of Surveys, at page 17, at the request of the Plumas Co. Engineer.

Fee \$5.00 File No. 22148

*By, Francon Nicol, Deputy*  
 Francon Nicol, Plumas County Recorder

RECORD OF SURVEY

FOR US.D.A. FOREST SERVICE & JAMES R. LEE

SEC. 16, T. 29N., R. 6E., M.D.B. & M.

PLUMAS COUNTY

CALIFORNIA

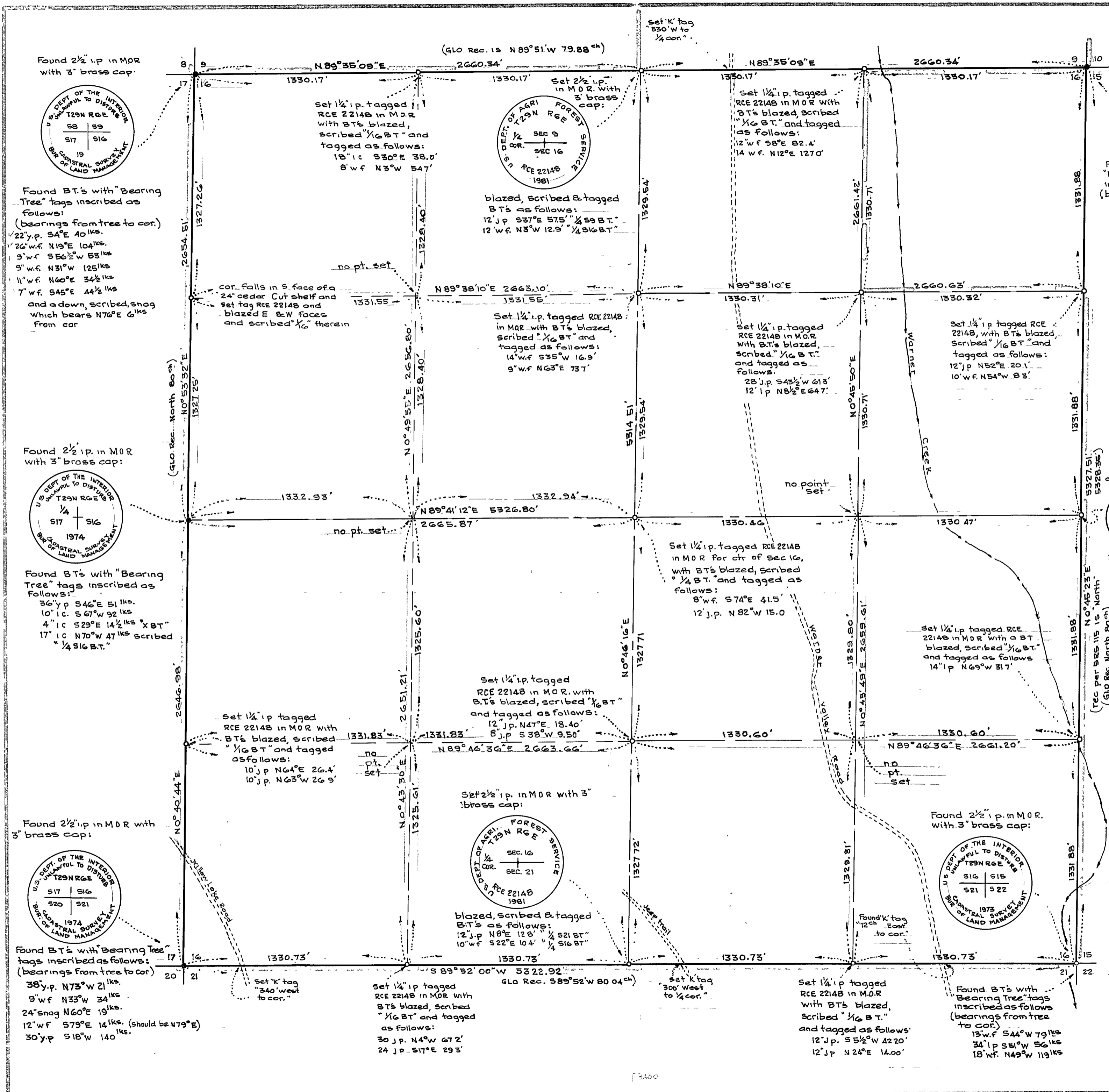
JULY, 1981

UPTEGROVE ENGINEERING

SCALE: 1"=400'

SHEET 1 OF 1

6 RS 19



1:400