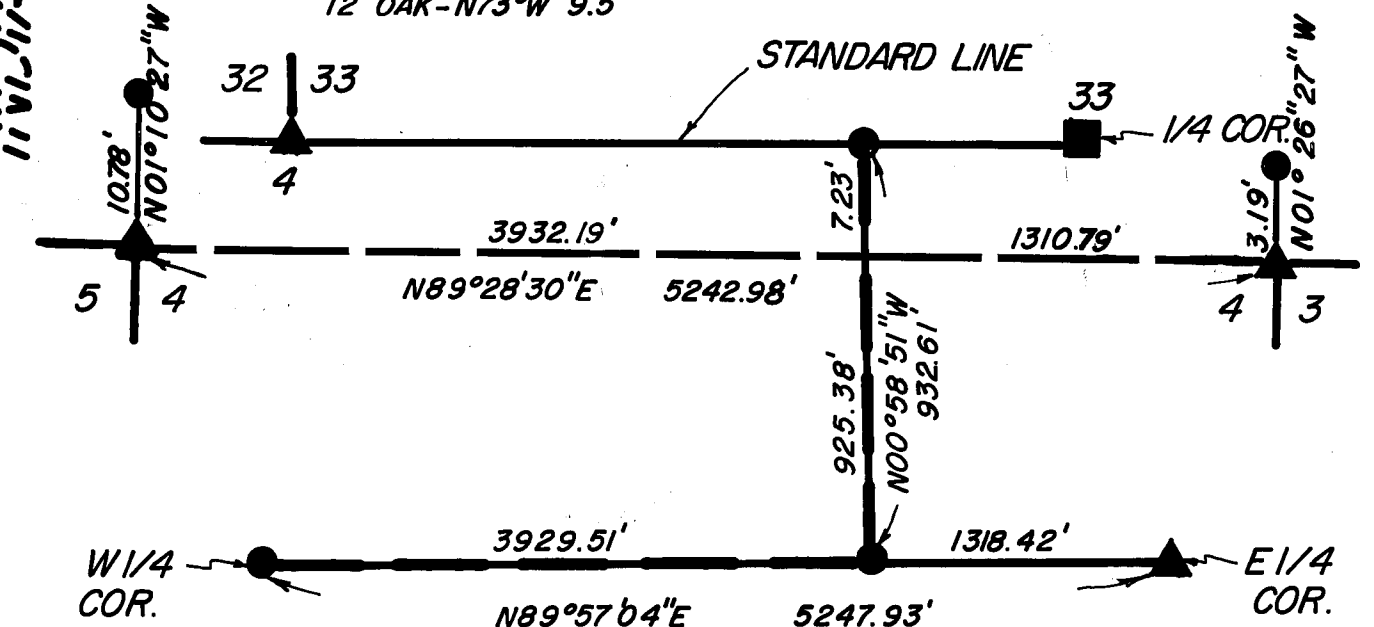


BEARING TREES (BEARS FROM CORNER)

- Ⓐ 7" CEDAR-S42°W 4.6'
5" CEDAR-S20°E 4.4'
- Ⓑ 6" CEDAR-S60°W 31.6'
7" CEDAR-N55°E 27.6'
- Ⓒ 5" FIR-S83°W 5.6'
4" FIR-N65°E 29.9'
- Ⓓ 10" OAK-S64°E 11.3'
12" OAK-N73°W 9.5'



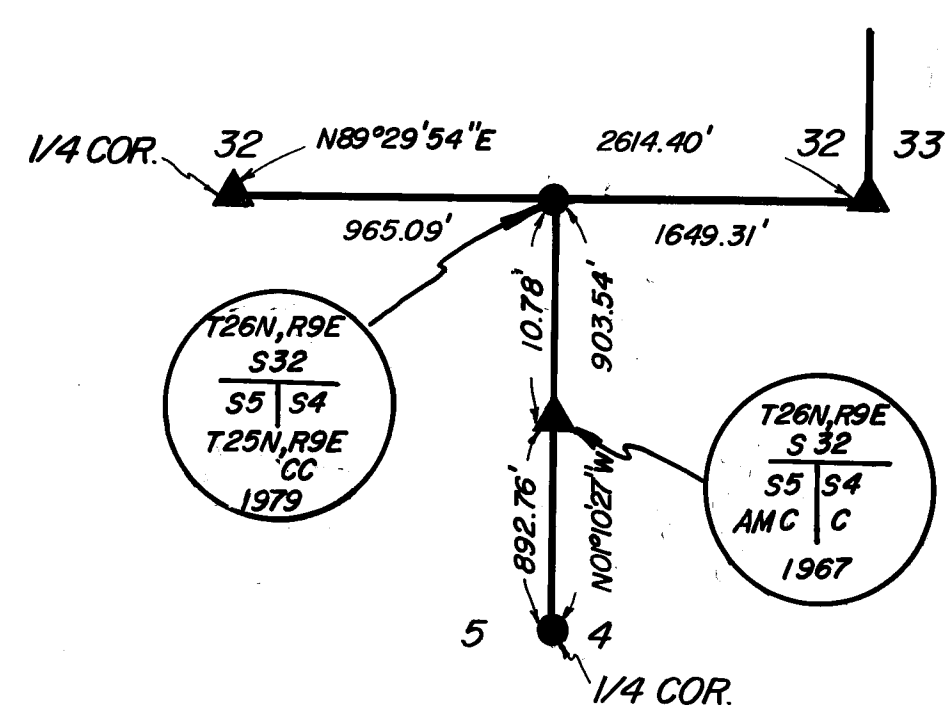
DETAIL C
NO SCALE

RECORD OF SURVEY

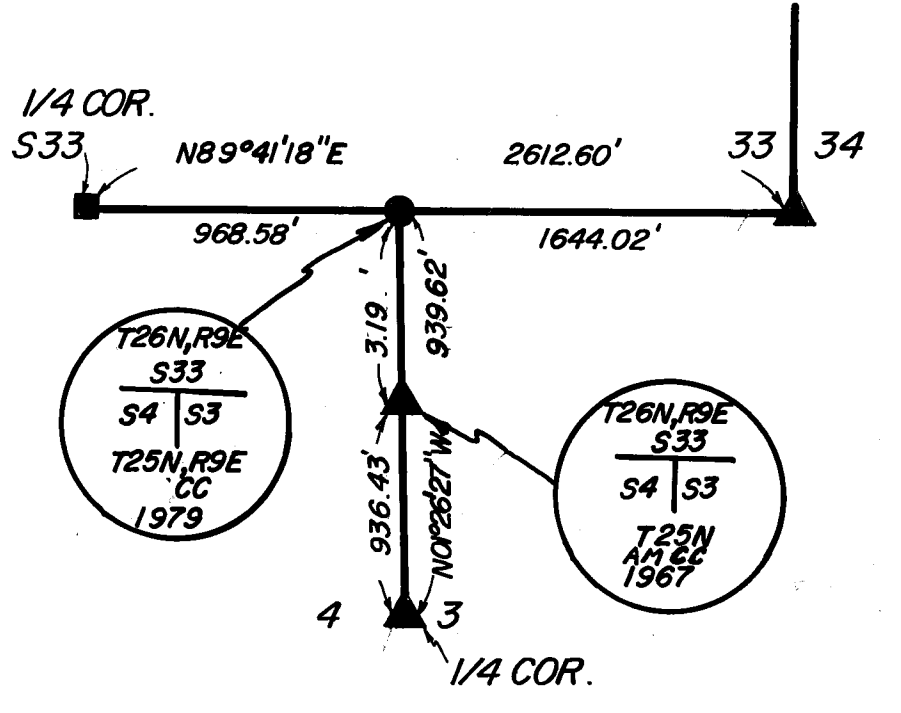
FOR
UNITED STATES FOREST SERVICE
PLUMAS NATIONAL FOREST
IN SEC. 29 AND 33, T26N, R9E, AND SEC. 4, 6 AND 9,
T25N, R9E, M.D.M.

LEGEND

- FD. 1" IRON PIPE W/2 1/2" ALUM. CAP MKD. AS NOTED WITH BEARING TREES
- FD. 4" x 4" POST IN ROCK MOUND W/TIN TOP MKD. 1963
K' TAG ON DOUG FIR TO NORTH APPROX. 12 FEET
- ▲ FD. STANDARD B.L.M. MON. AND BRASS CAP W/BEARING TREES MKD. AS NOTED, 2" IRON PIPE W/3" B.C.
- SET STANDARD 2" ALUM. PIPE W/MAGNETIC BASE AND 3" ALUM. CAP MKD. AS NOTED, LS 4388
- [] G.L.O. CALLS, DISTANCES CONVERTED FROM CHAINS TO FEET (SURVEYED BY DENTON BROWN, 1869)
- < > G.L.O. DISTANCES CONVERTED FROM CHAINS TO FEET (SURVEYED BY Wm MINTO, 1880)
- (-) CALCULATED BEARINGS AND DIST. FOR SECTION BREAKDOWN
- PROPERTY LINE MARKED AND POSTED



DETAIL A
NO SCALE



DETAIL B
NO SCALE

PAYNE SURVEYING
2946 INEZ STREET
REDDING, CA. 96001
PHONE 916-243-1730
DATE OCTOBER 1979 SCALE 1"=500' SHEET 5 OF 7