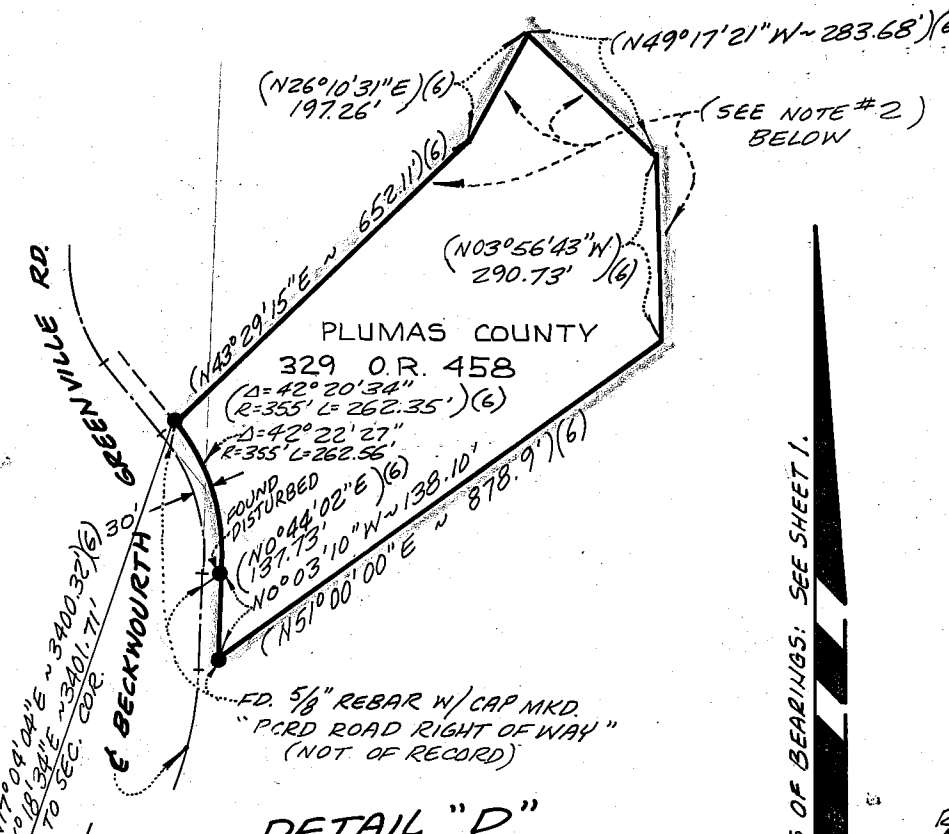


DETAIL "A"
SCALE: 1" = 200'

DETAIL "B"
SCALE: 1" = 200'



DETAIL "D"
SCALE: 1" = 300'

DETAIL "C"
SCALE: 1" = 200'

CORNER LEGEND

- "A" FOUND 6" CONCRETE MONUMENT WITH TAG MARKED "R.C.E. 11128" PER BOOK 4 OF P.M., PAGE 75; BOOK 3 OF R/S, PAGE 76; BOOK 2 OF R/S, PAGE 94.
- "B" FOUND 1/2" IRON ROD WITH TAG MARKED "R.C.E. 13528" PER BOOK 3 OF R/S, PAGE 70.
- "C" FOUND 1/4" x 1/4" x 8" STONE & MOUND OF ROCKS PER G.L.O.; BOOK 2 OF R/S, PAGE 94; BOOK 3 OF R/S, PAGE 70.
- "D" FOUND 1 3/4" B.L.M. BRASS CAP PER G.L.O. NOTES AND 1/2" ROD ALONG SIDE WITH CAP MARKED "R.C.E. 13528" PER BOOK 3 OF R/S, PAGE 70. B.T.'S PER G.L.O. NOTES FOUND.
- "E" FOUND A 3/4" B.L.M. BRASS CAP PER G.L.O. NOTES AND 1/2" ROD ALONG SIDE WITH CAP MARKED "R.C.E. 13528" PER BOOK 3 OF R/S, PAGE 70. B.T.'S PER G.L.O. NOTES FOUND.
- "F" FOUND A 3/4" B.L.M. BRASS CAP PER G.L.O. NOTES AND 1/2" ROD ALONG SIDE WITH CAP MARKED "R.C.E. 13528" PER BOOK 3 OF R/S, PAGE 70. B.T.'S PER G.L.O. NOTES FOUND.
- "G" CORNER SET BY SINGLE PROPORTION METHOD. FOUND 1/4" ROD WITH CAP MARKED "R.C.E. 11128" PER BOOK 3 OF P.M., PAGE 76 (BEARS N 88° 11' 38" W, 48.08 FEET - NOT RECOVERED). FIELD NOTES OF G.L.O. AND MARCUS W. McBEAN '52 PER BOOK 3 OF R/S, PAGE 70 AND BOOK 1 OF R/S, PAGE 74 NOT COMPATIBLE. NUMEROUS ROCK MOUNDS HAVE BEEN PLACED IN THIS GENERAL AREA OVER THE YEARS AND HAVE BEEN FOUND TO BE CONSIDERABLY OUT OF POSITION. BY MEANS OF THIS SURVEY THE SINGLE PROPORTION POSITION CLOSELY MATCHES "SWAMP AND OVERFLOW SURVEY NO. 66" BY G.L.O.
- "H" FOUND 6" CONCRETE MONUMENT WITH TAG MARKED "R.C.E. 11128" PER BOOK 3 OF R.S., PAGE 76; BOOK 2 OF R/S, PAGE 128.
- "I" FOUND 3/4" B.L.M. BRASS CAP IN ROCK MOUND PER G.L.O. NOTES.
- "J" CORNER SET BY SINGLE PROPORTION METHOD. NOTE: THE NORTH LINE OF THE N.W. 1/4 OF SECTION 23 WAS SURVEYED, BUT THE NORTH LINE OF THE N.E. 1/4 OF SECTION 23 WAS NOT. THE ORIGINAL CORNER WAS DESTROYED BY DEEPING AND WAS NOT RECOVERABLE. THE SINGLE PROPORTION METHOD WAS USED BECAUSE OF THE INTENT OF THE G.L.O. PLAT IN THE "SWAMP AND OVERFLOW SURVEY".
- "K" FOUND ROCK MOUND WITH 1/2" REBAR AND B.T.'S PER BOOK 3 OF R/S, PAGE 94; BOOK 3 OF P.M., PAGE 50.
- "L" FOUND ROCK MOUND WITH 4x4 CHARRED POST. SET A 5/8" REBAR WITH CAP MARKED "R.C.E. 18584" ADJACENT TO IT. MONUMENT OF RECORD PER BOOK 3 OF P.M., PAGE 50; BOOK 3 OF R/S, PAGE 94.
- "M" FOUND 1 1/4" IRON PIPE WITH CAP IN ROCK MOUND; ACCEPTED FOR ORIGINAL POSITION OF CORNER IN G.L.O. "SWAMP AND OVERFLOW SURVEY NO. 66".
- "N" FOUND 1/4" STEEL PIN WITH PLASTIC CAP MARKED "R.C.E. 11173" PER BOOK 4 OF P.M., PAGE 73.
- "O" FOUND 1/4" STEEL PIN WITH PLASTIC CAP MARKED "R.C.E. 11173" PER BOOK 4 OF P.M., PAGE 73.
- "P" FOUND 1/4" STEEL PIN WITH PLASTIC CAP MARKED "R.C.E. 11173" PER BOOK 4 OF P.M., PAGE 73.
- "Q" LOCATED PROPERTY BOUNDARY CORNER PER RECORDED DISTANCE ON RIGHT OF WAY PER BOOK 4 OF P.M., PAGE 73. INDICATED POINT "T" (ON P.M. 6. 73) AND POINT "R" (NOT OF RECORD). SET 5/8" REBAR W/CAP MND. "R.C.E. 18584" FOR WITNESS CORNER (SEE SHEET 1).
- "R" FOUND 1" IRON PIPE MARKED "R.C.E. 13528" (NOT OF RECORD).
- "S" FOUND 1" IRON PIPE MARKED "R.C.E. 13528" IN POSITION PER BOOK 2 OF R/S, PAGE 94, (TAG "R.C.E. 11128" OF RECORD).
- "T" FOUND 1/4" STEEL PIN WITH PLASTIC CAP MARKED "R.C.E. 11173" PER BOOK 4 OF P.M., PAGE 73.

NOTES:

- 1) THESE MONUMENTS HAVE BEEN REMOVED AND REPLACED IN DIFFERENT LOCATIONS BY OTHERS DURING THE COURSE OF THIS SURVEY, AND ARE EXPECTED TO BE FOUND OCCUPYING DIFFERENT POSITIONS FOLLOWING THE RECORDING OF THIS MAP.
- 2) THE BACK LINES OF THIS PARCEL WERE NOT SURVEYED, BUT WERE COMPILED FROM FIELD INFORMATION. THE FIELD LOCATION OF THE MONUMENTS SET BY THE PLUMAS COUNTY ROAD DEPARTMENT, OTHER THAN THOSE SHOWN HEREON, HAVE NOT BEEN VERIFIED.

JOHNSON ENGINEERS AND SURVEYORS, INC.
CIVIL ENGINEERS R.C.E. 18584 - L.S. 3859 SURVEYORS
RED BLUFF, CALIFORNIA

RECORD OF SURVEY
IN THE UNINCORPORATED TERRITORY
OF
PLUMAS COUNTY, CALIFORNIA
IN
SEC'S. 23, 26, & 35, T.26 N., R.10 E., M.D.M.
FOR
DON CARR, ET UX
(305 O.R. 504)

SCALE: 1" = 200' DATE: OCT. 1981 SHEET: 2 OF 2