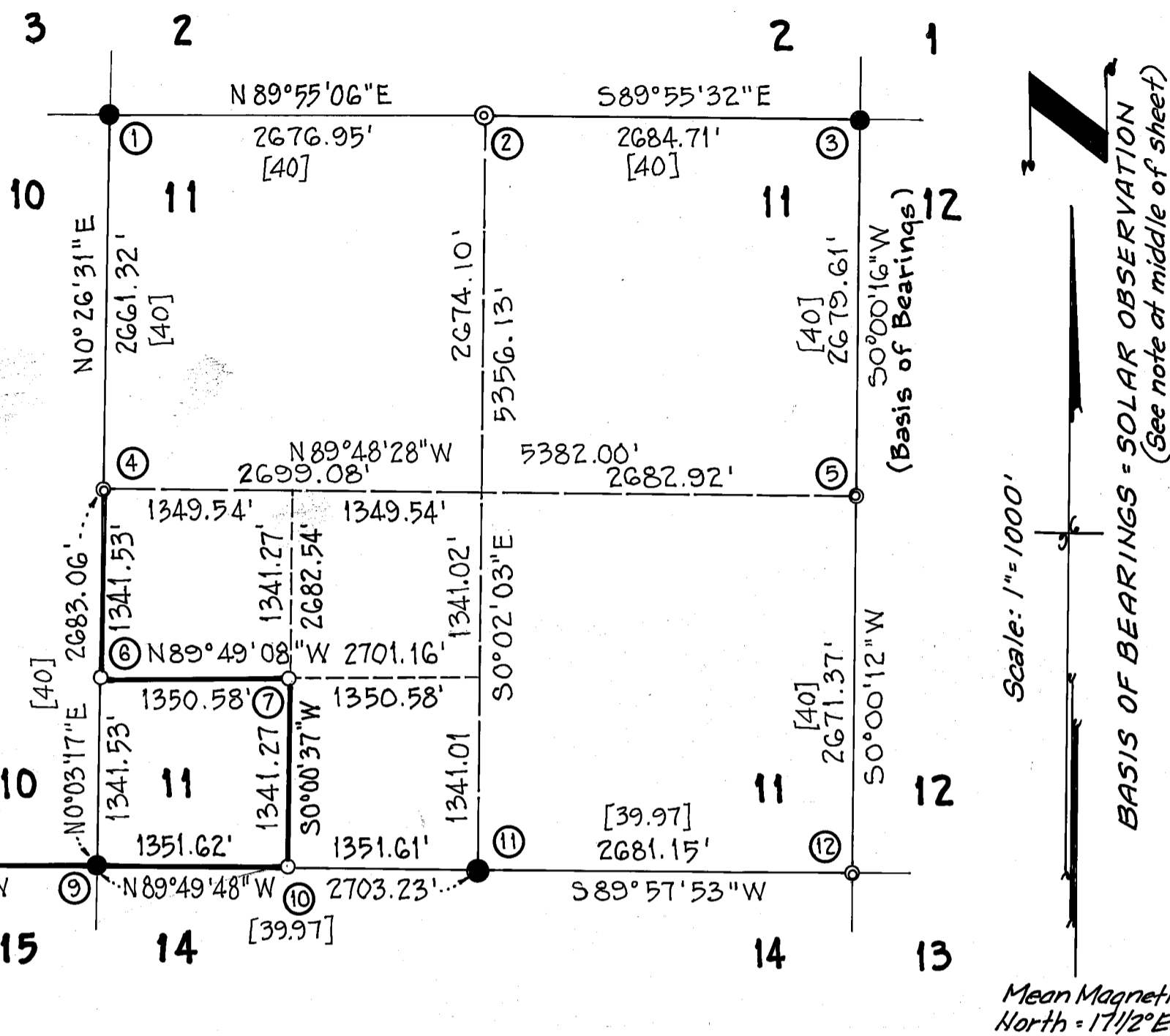


CORNER NOTES ~

- ① SEC. COR. 2, 3, 10 & 11 - Fd. 2 1/2" Pipe in rock mound set 1973, w/ B.L.M. Brass Cap. B.T.'s. Fd. (1973 B.L.M.):
 1.) 16" Fir S. 40° E. 62.5 ft. (15" Fir S. 39 1/2° E. 95 lks.)
 2.) 13" Cedar N. 54° E. 34.5 ft. (13" Cedar N. 55° E. 52 lks.)
 3.) 7" Fir N. 48° W. 16.0 ft. (5" Fir N. 48° W. 24 lks.)
 4.) 23" Cedar S. 83° W. 40.0 ft. (21" Cedar S. 81 1/2° W. 60 lks.)
 5.) 21" Pine N. 20° E. 21.0 ft.
- ② N. 1/4 COR. SEC. 11 - Set Std. 2" ACAP in rock mound mkd. L.S. 3318 from orig. B.T.'s.
 Fd. Orig. B.T.'s : G.L.O. 1871 -
 1.) 30" W. Fir w/ blaze & Tag S. 23 1/2° W. 18.5 ft. (12" Fir S. 23 1/2° W. 28 lks.)
 2.) 6" Pine - dead & down - scribing visible - N. 64° W. 31.7 ft. (6" Pine N. 64° W. 48 lks.)
 Scribed & Tagged new B.T. -
 1.) 13" Fir N. 13° E. 20.2 ft.
- ③ SEC. COR. 1, 2, 11 & 12 - Fd. 2 1/2" Pipe w/ B.L.M. Brass Cap in Rock Mound - set 1973.
 Fd. B.T.'s. (B.L.M. 1973):
 1.) 10" Cedar N. 15° E. 48.0 ft. (9" Cedar N. 14 1/2° E. 73 lks.)
 2.) 13" Cedar N. 46° W. 55.3 ft. (11" Cedar N. 46° W. 84 lks.)
 3.) 13" Cedar S. 47° E. 59.5 ft. (12" Cedar S. 47 1/2° E. 90 lks.)
- ④ W. 1/4 COR. SEC. 11 - Set Std. 2" ACAP in rock mound mkd. L.S. 3318, From Orig. B.T.'s. & R.M.
 Fd. Orig. B.T.'s (G.L.O. 1871):
 1.) 25" Pine N. 87° W. 51.5 ft. (26" Pine N. 87 1/2° W. 71 lks.) scribing visible.
 Fd. B.T.'s (B.L.M. 1974):
 1.) 18" Cedar N. 51° E. 47.5 ft. (17" Cedar N. 51° E. 73 1/2 lks.)
 2.) R.M. a 2 1/2" Pipe w/ B.L.M. Brass Cap - 1974 - S. 40° E. 21.5 ft. - agrees w/ 1974 record.
- ⑤ E. 1/4 COR. SEC. 11 - Set Std. 2" ACAP in rock mound, mkd. L.S. 3318, from Orig. B.T.'s. (G.L.O. 1871):
 1.) 28" Pine N. 44° W. 46.0 ft. w/ scribing visible (6" Pine N. 44° W. 69 lks.)
 Scribed & Tagged new B.T.'s.:
 1.) 14" Fir N. 69° W. 44.6 ft.
 2.) 18" Pine N. 48° E.
- ⑥ S. 1/16 10 1/11 - Set 5/8" Rebar w/ Alum. Cap mkd. L.S. 3318 - built mound of rocks - scribed & tagged new B.T.'s ~
 1.) 10" Cedar N. 89° E. 11.8 ft.
 2.) 10" Lodgepole Pine S. 32° E. 20.0 ft.
- ⑦ S.W. 1/16 SEC. 11 - Set 5/8" Rebar & Alum. Cap mkd. L.S. 3318 - built mound of rocks - scribed & tagged new B.T.'s.:
 1.) 9" Fir S. 5° E. 18.9 ft.
 2.) 9" Pine S. 69° W. 23.7 ft.
- ⑧ 1/4 COR. 10 1/5 - Fd. 2 1/2" Pipe w/ B.L.M. Brass Cap in mound of rocks - set 1973 -
 B.T.'s. Fd. (B.L.M. 1973):
 1.) 16" Tamarack S. 32° E. 9.5 ft. (15" Tamarack S. 32° E. 14 lks.)
 2.) 17" Tamarack S. 50° W. 12.5 ft. (15" Tamarack Snag S. 46° W. 20 lks.)
 3.) 28" Pine N. 36° W. 34.5 ft. (26" Y. Pine N. 36° W. 52 lks.)
 4.) 19" Tamarack N. 21° W. 27.8 ft. (18" Tamarack N. 20° W. 44 lks.)



BASIS OF BEARINGS ~

Basis of Bearings is the east line of Section 11 as determined by Solar Observation, being S. 0° 00' 16" W. Date: 9-9-81 Time: 10:19:49 am, P.D.T. Lat.: 40° 23.7'

I, GERALD H. GRIFFITH, a registered Land Surveyor, in the State of California, hereby certify that this plat and notes hereon, or attached, are a current representation of a survey I performed during FALL, 1981, for the U.S.D.A. Forest Service, in accordance with the statutes of the State of California and with the Articles of my contract.

Gerald H. Griffith
 GERALD H. GRIFFITH ~ L.S. 3318

- ⑨ SEC. COR. 10, 11, 14 & 15 - Fd. 2 1/2" Pipe w/ B.L.M. Brass Cap in rock mound - set 1974.
 Fd. B.T.'s. (B.L.M. 1974):
 1.) 21" Tamarack S. 68° W. 7.4 ft. (21" Tamarack Snag S. 71° W. 11 lks.)
 2.) 20" Tamarack N. 32° W. 12.8 ft. (21" Pine Stump N. 31° W. 20 lks.)
 3.) 17" Cedar S. 30° E. 22.5 ft. (14" Cedar S. 29° E. 34 lks.)
 4.) 15" Tamarack S. 59° W. 30.8 ft. (15" Tamarack S. 57° W. 46 1/2 lks.)
- ⑩ W. 1/16 11 1/4 - Set 5/8" Rebar w/ Alum. Cap in mound of rocks mkd. L.S. 3318 - Scribed & Tagged new B.T.'s :
 1.) 9" Pine S. 6° E. 23.3 ft.
 2.) 10" Pine N. 51° E. 45.5 ft.
- ⑪ S. 1/4 COR. 11 1/4 - Fd. 3/4" Pipe tagged L.S. 2322 in rock mound and Fd. Orig. B.T.'s. Pulled pipe and set Std. 2" ACAP mkd. L.S. 3318 in its place. Buried Fd. Pipe upside down and alongside new mon.
 Fd. B.T.'s. (G.L.O. 1871) ~
 1.) 10" Cedar N. 34° E. 14.5 ft., blaze healed over.
 2.) 15" Cedar S. 10° W. 21.5 ft., blaze healed over. (by L.S. 2322 ?)
 3.) 40" P. Pine N. 80° W. 13.9 ft., blaze visible - scribing illegible (36" Pine N. 80° W. 21 lks.)
- ⑫ SEC. COR. 11, 12, 13 & 14 - Set Std. 2" ACAP in rock mound mkd. L.S. 3318 from Fd. Orig. B.T. (G.L.O. 1871):
 1.) Depression where 36" S. Pine once stood S. 32° E. 41.0 ft. (36" Sugar Pine S. 32° E. 53 lks.)
 2.) 48" Fir Stump S. 65 1/2° W. 85.8 ft. - scribing visible (30" Fir S. 65 1/2° W. 130 lks.)
 Scribed & Tagged new B.T.'s :
 1.) 9" Fir N. 9° E. 35.4 ft.
 2.) 12" Fir S. 75° E. 19.9 ft.
 3.) 13" Pine S. 46° W. 38.3 ft.
 4.) 12" Fir N. 37° W. 49.1 ft.

LEGEND ~

- ⊙ Fd. evidence of Original Government Corner - See Cor. Notes hereon.
- Fd. monument as described in Cor. Notes hereon.
- [-] Orig. G.L.O. 1871 distance, in chains.
- Line marked and posted per U.S.D.A. - Forest Service Spec's.
- Set monument as described in Cor. Notes hereon.

NOTE ~

Multiply distances where shown in feet by 0.304801 to obtain meters.
 "Std. 2" ACAP" refers to a 2" Alum. Pipe w/ 3" Alum. Cap properly mkd. and set per 1973 B.L.M. Manual. Each B.T. is properly blazed & scribed, with an L.S. Tag mkd. L.S. 3318 affixed within the blaze.

SURVEYOR'S CERTIFICATE
 This map correctly represents a survey made by me or under my direction in conformance with the requirements of the Land Surveyor's Act at the request of U.S.D.A. - U.S.F.S. in SEPT.-OCT. 1981



COUNTY SURVEYOR'S CERTIFICATE
 This map has been examined for conformance with the requirements of the Land Surveyor's Act this 15 day of March, 1982

Lawrence J. Brock
 Lawrence J. Brock R.C.E. 13528
 Plumas County Surveyor

COUNTY RECORDER'S CERTIFICATE

Filed this 15 day of March, 1982, P.M.
 in Book 6 of Record of Surveys at page 50,
 request of the County Engineer, County Records, at the
 Ila Diggs
 County Recorder
 Fee 9.00
 File No. 6357

By: Isabella Andrews
 Deputy

" DAYS/FLAT/FORK CADASTRAL SURVEY "
 RECORD OF SURVEY
 FOR
 U.S.D.A. - U.S.F.S.
 LASSEN NATIONAL FOREST
 IN
 SECTIONS 10 & 11, T.29 N., R.6 E., M.D.M.,
 COUNTY OF PLUMAS, STATE OF CALIFORNIA
 SCALE 1" = 1000' October 1981



184-14-36.2
 FORK