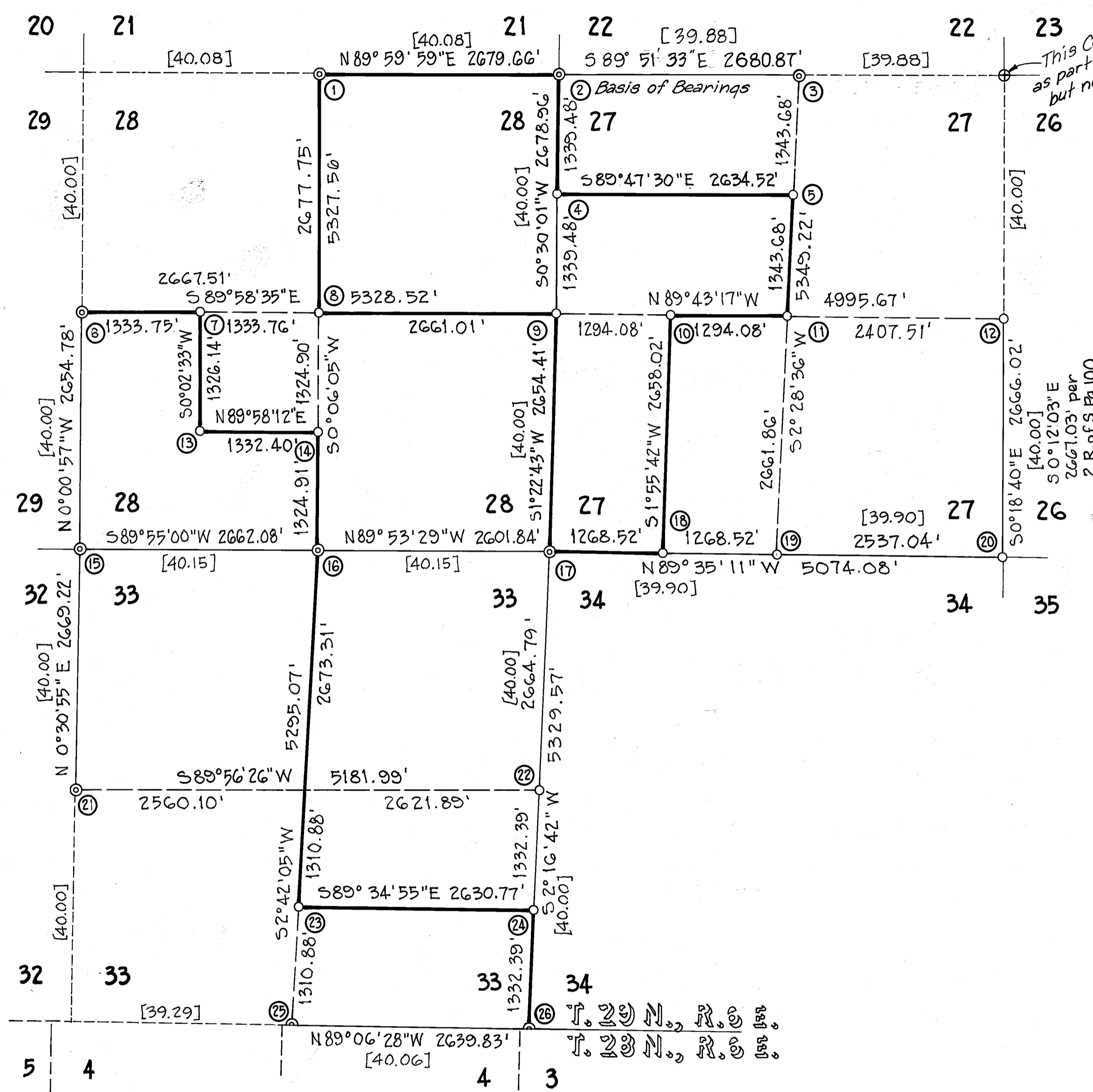




Scale: 1" = 1000'

Mean Magnetic North
17 1/2° East

BASIS OF BEARINGS ~ N. LINE, N.M. 1/4, SEC. 27
AS DETERMINED BY SOLAR OBSERVATION, BEING
S. 89° 51' 33" E., FROM A CONTROL LINE NEARBY ~ DATE: 9-9-81
TIME: 9:31:35 A.M. P.D.T. LAT: 40° 21'



- LEGEND ~**
- ⊙ Fd. Monument or evidence of Orig. Gov't Cor. per "Corner Notes" on Sheet 3.
 - Set Cor. Monument as described on Sht. 3.
 - ① Cor. Key - See Sheet 3 for description.
 - [~] Record Distance per 1870 G.L.O. Notes as shown hereon, in chains.
 - (~) or [~] Record Data as indicated on Sheet 3 only.
 - Line marked and posted to U.S.F.S. Specs.

- NOTE ~**
- Multiply distances shown hereon in feet by 0.304801 to obtain meters.
- 22 | 23
27 | 26
- Fd. 3/4" Iron Pipe set by L.S. 2322. Set Std. U.S.F.S. 2" Pipe & 3" Brass Cap mon. in its place & buried Fd. Pipe upside down & alongside new mon.
Fd. Orig. B.T.'s = (G.L.O. 1871)
1.) 52" Pine N. 30° E. 28.6 ft. (Closed blaze)
(38" Sugar Pine N. 30° E. 42 lks.)
2.) 33" Fir (dead) N. 25° W. 38 ft. (blazed all sides) (15" Fir N. 25° W. 54 lks.)
Scribed and tagged new B.T.'s:
1.) 7" Pine N. 86° W. 19.2 ft.
2.) 9" Fir S. 15° W. 18.5 ft.
3.) 16" Pine S. 24° E. 67.4 ft.

" DAYS / FLAT / FORK CADASTRAL SURVEY "
RECORD OF SURVEY
FOR
U.S.D.A. - U.S.F.S.
LASSEN NATIONAL FOREST
IN
SECTIONS 27, 28 & 33, T. 29 N., R. 6 E., M.D.M.
COUNTY OF PLUMAS, STATE OF CALIFORNIA
SCALE 1" = 1000' October, 1981

181-14-36.2 FORK  GRIFFITH & ASSOCIATES SURVEYORS ENGINEERS SHEET 2 OF 3