

SCALE: 1" = 400'

Basis of Bearings is a solar observation at the 1/4 Cor. of Sections 35 & 36.

SURVEYOR'S CERTIFICATE:
 This map correctly represents a survey made by me or under my direction in conformance with the requirements of the Land Surveyor's Act at the request of Irwin Luckman on March 16, 1982.

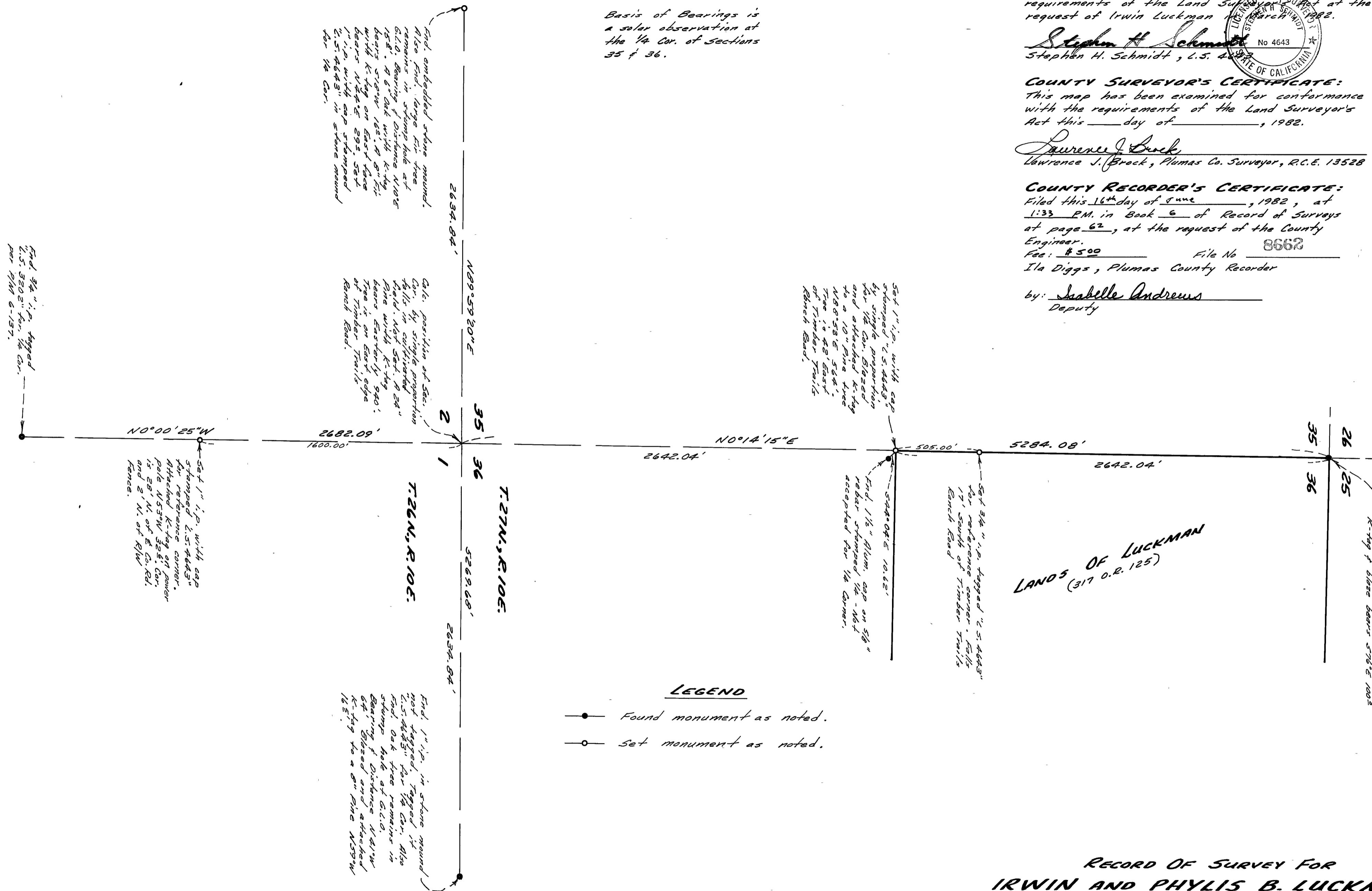
Stephen H. Schmidt
 Stephen H. Schmidt, L.S. 4643
 State of California

COUNTY SURVEYOR'S CERTIFICATE:
 This map has been examined for conformance with the requirements of the Land Surveyor's Act this ___ day of ___, 1982.

Lawrence J. Brock
 Lawrence J. Brock, Plumas Co. Surveyor, R.C.E. 13528

COUNTY RECORDER'S CERTIFICATE:
 Filed this 16th day of June, 1982, at 1:33 P.M. in Book 6 of Record of Surveys at page 62, at the request of the County Engineer.
 Fee: \$ 500 File No 8662
 Ila Diggs, Plumas County Recorder

by: *Inabelle Andrews*
 Deputy



LEGEND

- Found monument as noted.
- Set monument as noted.

RECORD OF SURVEY FOR IRWIN AND PHYLIS B. LUCKMAN

THE N. 1/2 OF SECTION 36, T. 27N., R. 10E., M.D.B. & M.
 PLUMAS COUNTY, CALIFORNIA
 SCALE: 1" = 400'
 PAUL E. SIMPSON, F.ASSOC., ENGINEERING-PLANNING-SURVEYING
 SUSANVILLE, CALIFORNIA