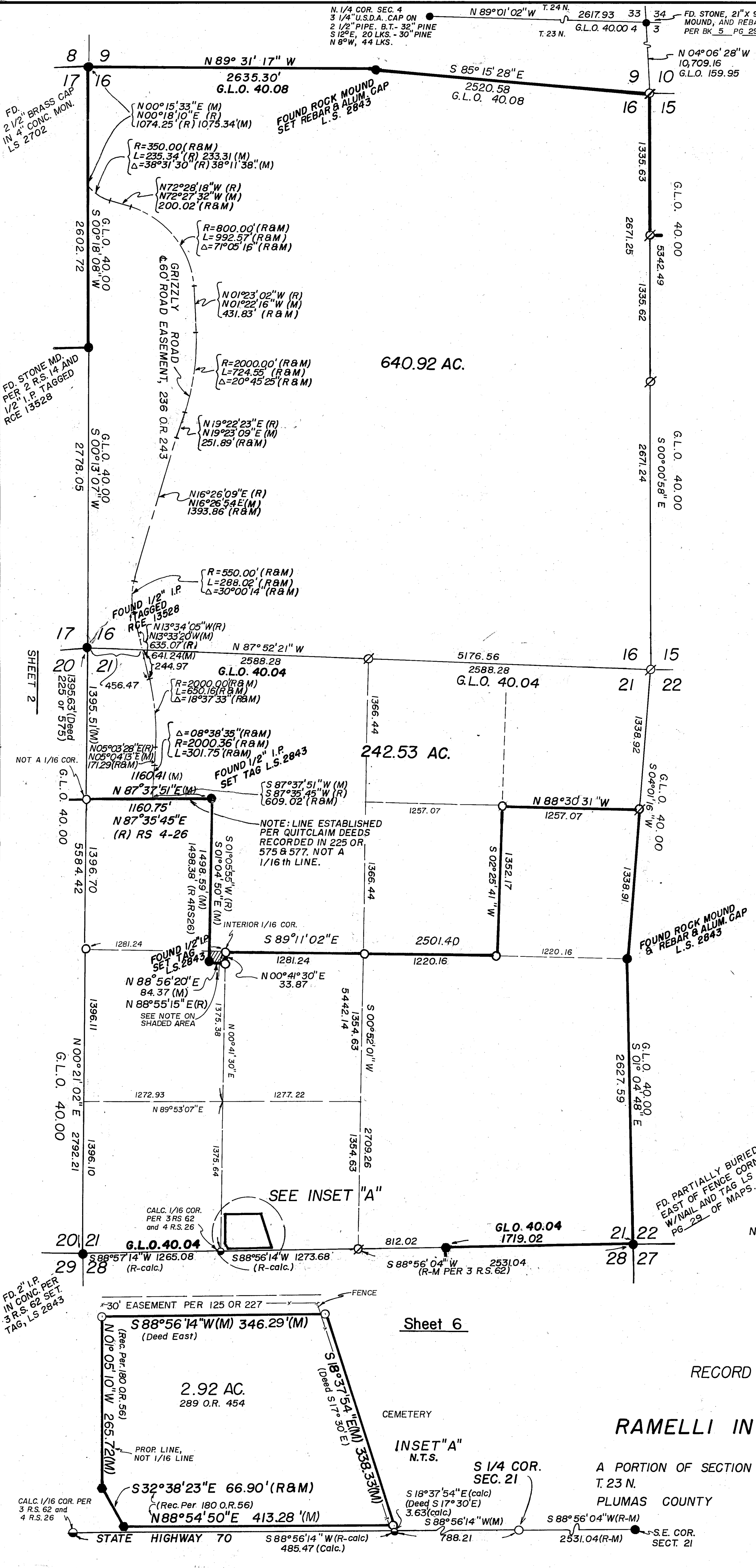


N 1/4 COR. SEC. 4
 3 1/4" U.S.D.A. CAP ON
 2 1/2" PIPE, B.T. - 32" PINE
 S 12°E, 20 LKS. - 30" PINE
 N 8°W, 44 LKS.



SCALE: 1" = 600'

- LEGEND**
- FD. REBAR & ALUMINUM CAP
LS 2843 PER BK. 5
PG. 29 OF MAPS
 - COMPUTED POINT, NOTHING SET
 - FOUND POINT AS NOTED
 - SET 1/2" REBAR & ALUM. CAP
LS 2843
 - (R) RECORD
 - (M) MEASURED
 - STATE HIGHWAY POINT PER
STATE HIGHWAY RECORDS
"T" BAR TAGGED RCE 5569

FD. PARTIALLY BURIED ROCK MOUND 1.5'
 EAST OF FENCE CORNER WITH 9" X 9" ROCK
 W/ NAIL AND TAG LS 2843 PER BK. 5
 PG. 29 OF MAPS.

NOTE: The record title to the area shown shaded that is south of the South Line of the N.W. 1/4 of Sec. 21 may be in question per Quitclaim Deeds 225 or 575 & 577.

FD. 2" I.P.
 IN CONC. PER
 3 R.S. 62 SET
 TAG, LS 2843

CALC. 1/16 COR. PER
 3 R.S. 62 and
 4 R.S. 26

6 RS 68

68

RECORD OF SURVEY
 FOR
RAMELLI INVESTMENT GROUP

A PORTION OF SECTION 21 & ALL OF SECTION 16
 T. 23 N. R. 14 E. MDB & M.
 PLUMAS COUNTY CALIFORNIA