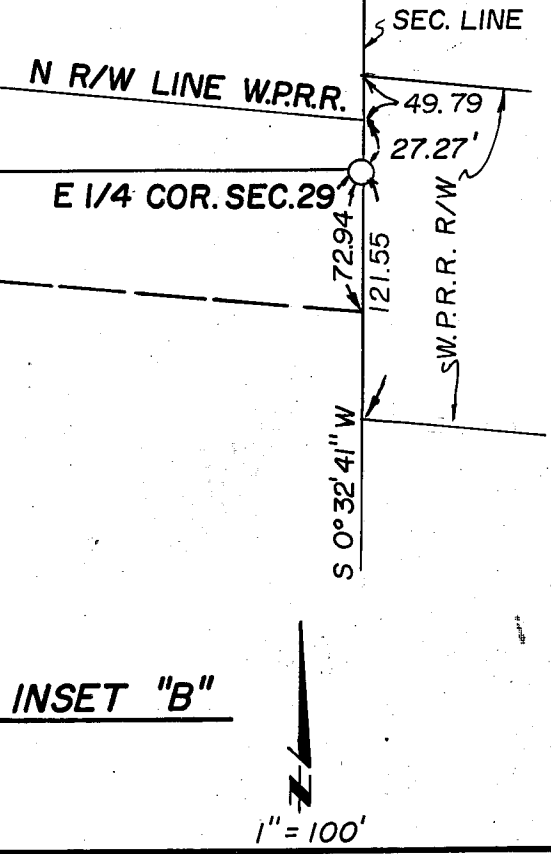


SCALE 1" = 600'

SCALE 1" = 300'

DETAIL "C"
NOT TO SCALE

SEE INSET "B"



	BEARING	DISTANCE		BEARING	DISTANCE
A	S 00° 32' 41" W	660.00'	M	N 00° 32' 41" E	46.65'
B	N 63° 07' 30" E	42.98'(M)	N	S 88° 27' 48" E	87.04'
C	S 00° 32' 41" W	101.29'	O	N 04° 43' 18" W	151.19'
D	S 88° 27' 48" E	219.78'	P	N 31° 01' 09" W	138.39'
E	N 00° 32' 41" E	151.35'	Q	N 01° 35' 47" W	39.82'
F	S 88° 27' 48" E	89.18'	R	N 42° 57' 12" E	104.42'
G	S 00° 32' 41" W	627.62'	S	Δ=6° 08' 34" L=65.40' R=610.00	
H	S 89° 05' 14" E	593.92'	T	N 44° 58' 20" E	64.21'
I	N 63° 07' 30" E	138.03'	U	N 00° 18' 36" W	44.73'
J	N 59° 26' 45" E	155.86'	V	N 22° 30' 47" W	118.36'
K	N 71° 20' 57" E	74.78'	W	N 04° 20' 12" W	216.58'
L	N 63° 07' 30" E	98.02'	X	S 88° 27' 48" E	28.38'

LEGEND

- Fd. POINT AS NOTED
- STATE HIGHWAY POINTS; "T" BAR, RCE 5569
- COUNTY ROAD MONUMENT, 6" X 6" CONC. POST W/NAIL
- POINTS PER 4 PM 59, 1/2" I.P., RCE 13528
- SET REBAR & ALUMINUM CAP L.S. 2843
- COMPUTED POINT, NOTHING SET
- (R) RECORD
- (M) MEASURED
- * PER STATE HIGHWAY RECORDS

NOTES:
RAILROAD RIGHT-OF-WAY ESTABLISHED BY SURVEY OF TRACK CENTERLINE.
DEED REFERENCES: 36 DEEDS 292

RECORD OF SURVEY FOR

RAMELLI INVESTMENT GROUP

SECTION 29, T. 23 N, R. 14 E
M.D.B.&M.

PLUMAS COUNTY

CALIFORNIA