

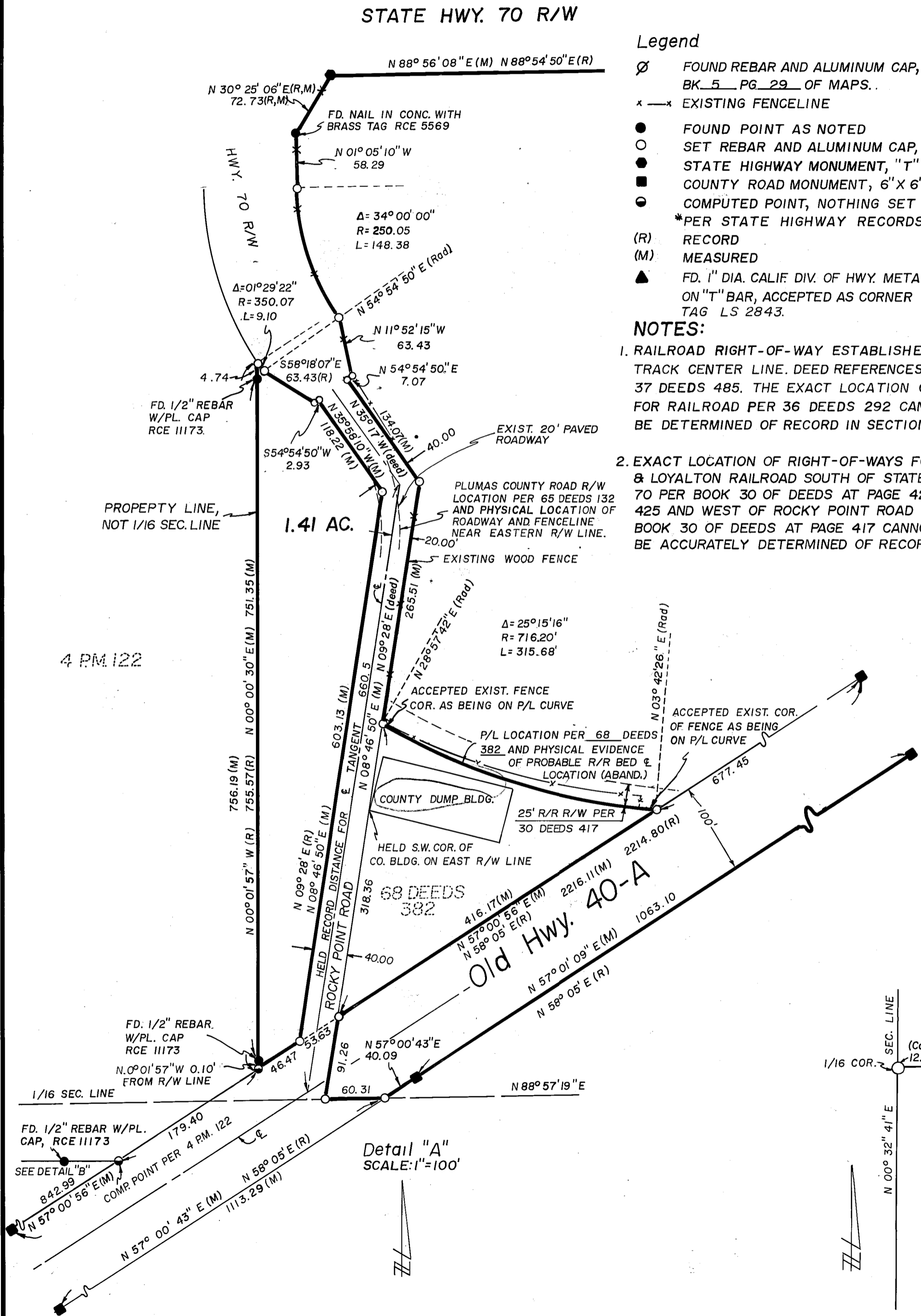
STATE HWY. 70 R/W

Legend

- FOUND REBAR AND ALUMINUM CAP, LS 2843 PER BK 5 PG 29 OF MAPS.
- ✕ EXISTING FENCELINE
- FOUND POINT AS NOTED
- SET REBAR AND ALUMINUM CAP, LS 2843
- STATE HIGHWAY MONUMENT, "T" BAR, RCE 5569*
- COUNTY ROAD MONUMENT, 6" X 6" CONC. POST, TAGGED L.S. 2843
- COMPUTED POINT, NOTHING SET
- * PER STATE HIGHWAY RECORDS
- (R) RECORD
- (M) MEASURED
- ▲ FD. 1" DIA. CALIF. DIV. OF HWY. METAL CAP, NO LICENSE NO., ON "T" BAR, ACCEPTED AS CORNER PER 301 O.R. 419, SET TAG LS 2843.

NOTES:

1. RAILROAD RIGHT-OF-WAY ESTABLISHED BY SURVEY OF TRACK CENTER LINE. DEED REFERENCES: 33 DEEDS 599, 37 DEEDS 485. THE EXACT LOCATION OF RIGHT-OF-WAY FOR RAILROAD PER 36 DEEDS 292 CANNOT ACCURATELY BE DETERMINED OF RECORD IN SECTION 28.
2. EXACT LOCATION OF RIGHT-OF-WAYS FOR BOCA & LOYALTON RAILROAD SOUTH OF STATE HIGHWAY 70 PER BOOK 30 OF DEEDS AT PAGE 423 AND 425 AND WEST OF ROCKY POINT ROAD PER BOOK 30 OF DEEDS AT PAGE 417 CANNOT BE ACCURATELY DETERMINED OF RECORD.

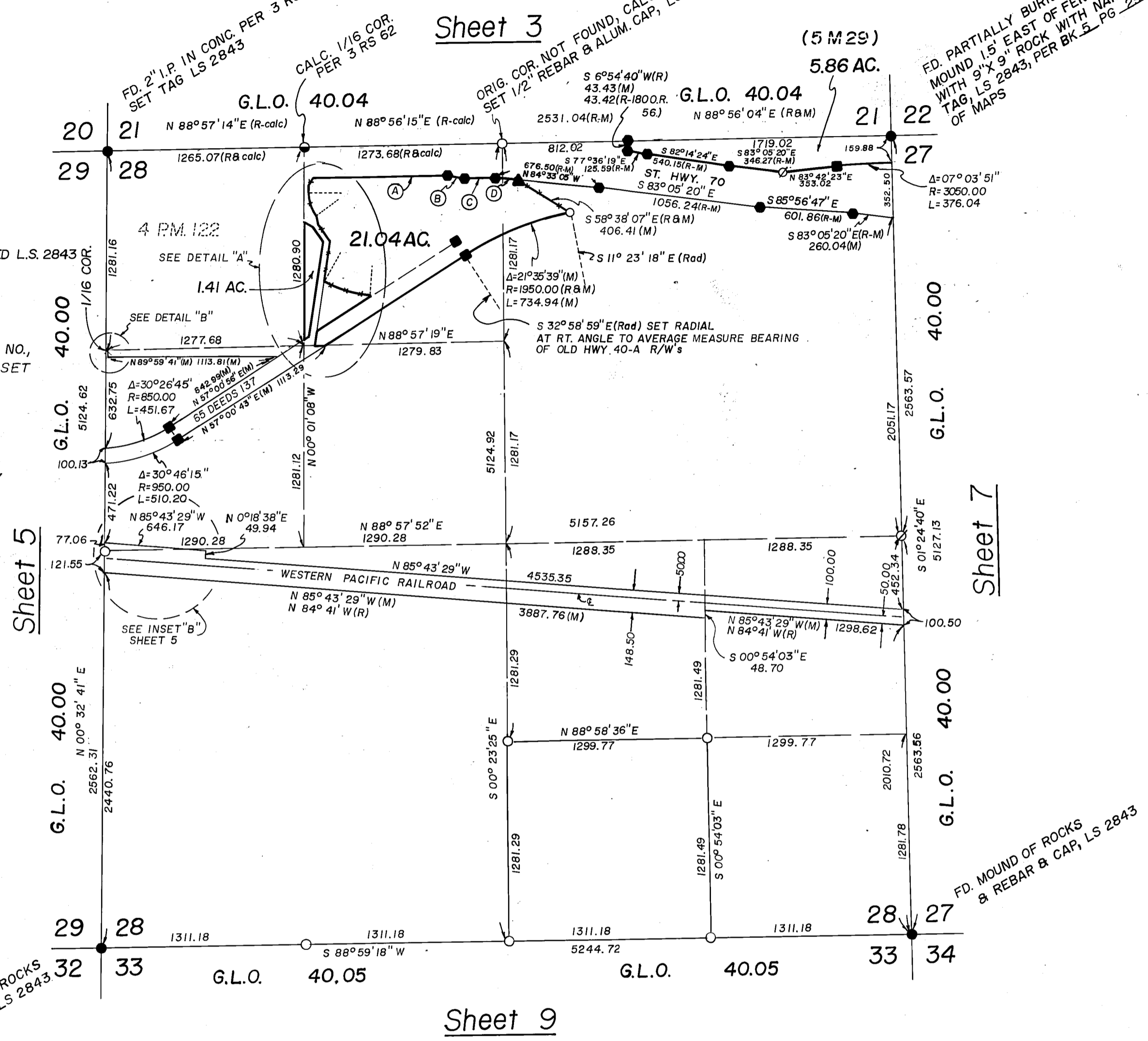


SCALE: 1"=600'

FD. MOUND OF ROCKS SET R & C LS 2843

Detail "A" SCALE: 1"=100'

Detail "B" SCALE: 1"=20'



	MEASURED	RECORD
A	N 88° 56' 08" E 862.14	N 88° 54' 50" E 862.16
B	S 79° 46' 04" E 101.99	S 79° 46' 32" E 102.00
C	N 88° 54' 57" E 195.97	N 88° 54' 50" E 196.11
D	S 84° 29' 13" E 150.22	S 84° 33' 05" E 150.22

RECORD OF SURVEY
FOR
RAMELLI INVESTMENT GROUP
OF A PORTION OF SECTION 28, T. 23 N., R. 14 E., M.D.B. & M.,
PLUMAS COUNTY,
CALIFORNIA