

SCALE: 1" = 500'

BASIS OF BEARING

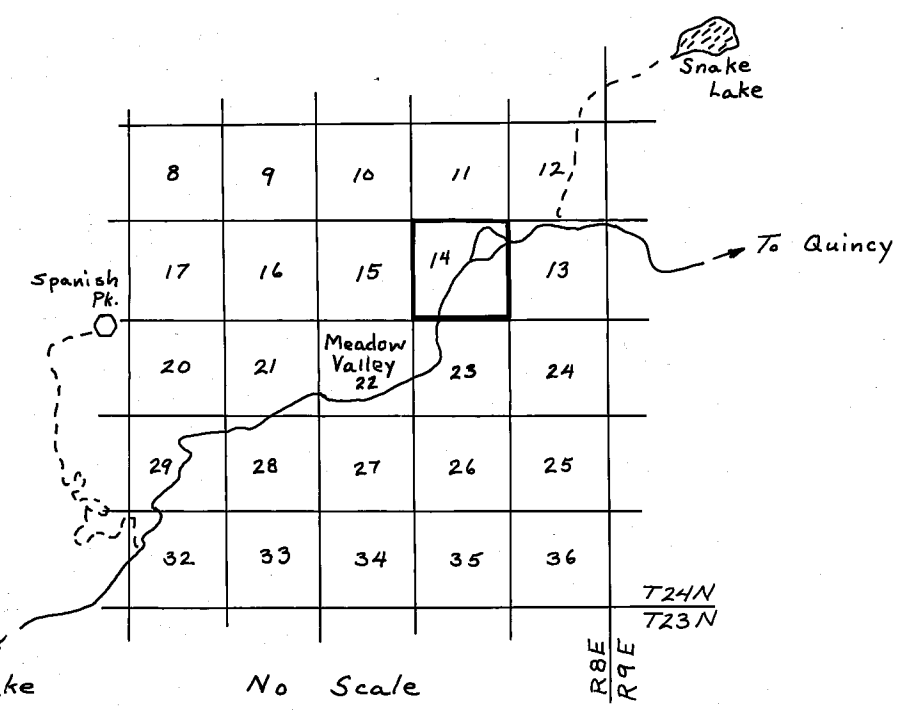
The Basis of Bearing Is True North As Determined By Solar Observation On July 21, 1982, Section 14, T24N, R8E, M.D.M.

Latitude: 39°56'59"
Longitude: 121°03'18"

LEGEND

- See Sheet 2 For Corner Notes
- Found Corners As Noted On Sheet 2
- Corner Set As Noted On Sheet 2
- G.L.O. General Land Office Fieldnotes By A.W.Keddie In 1870
- P.N.F. Plumas National Forest
- (Res. P.D.) Reserved Public Domain
- (acquired) Lands Acquired Through Exchange; Bk. 79 of Deeds, Pg. 57; 1-25-43
- National Forest Boundary
- ⊗ Calculated Position, Nothing Set
- Corner Remonumented As Noted On Page 2

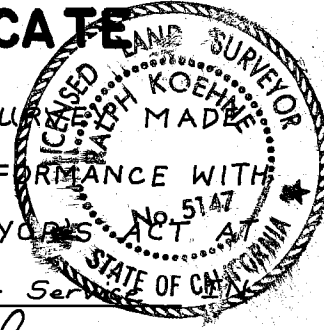
SHEET 1 OF 2



VICINITY MAP

SURVEYOR'S CERTIFICATE

THIS MAP CORRECTLY REPRESENTS A SURVEY MADE BY ME OR UNDER MY DIRECTION IN CONFORMANCE WITH THE REQUIREMENTS OF THE LAND SURVEYOR'S ACT AT THE REQUEST OF The United States Forest Service
OCT 14, 19 82
Ralph W. Koch
 RALPH KOEHNE R.L.S. 5147



COUNTY SURVEYOR'S CERTIFICATE

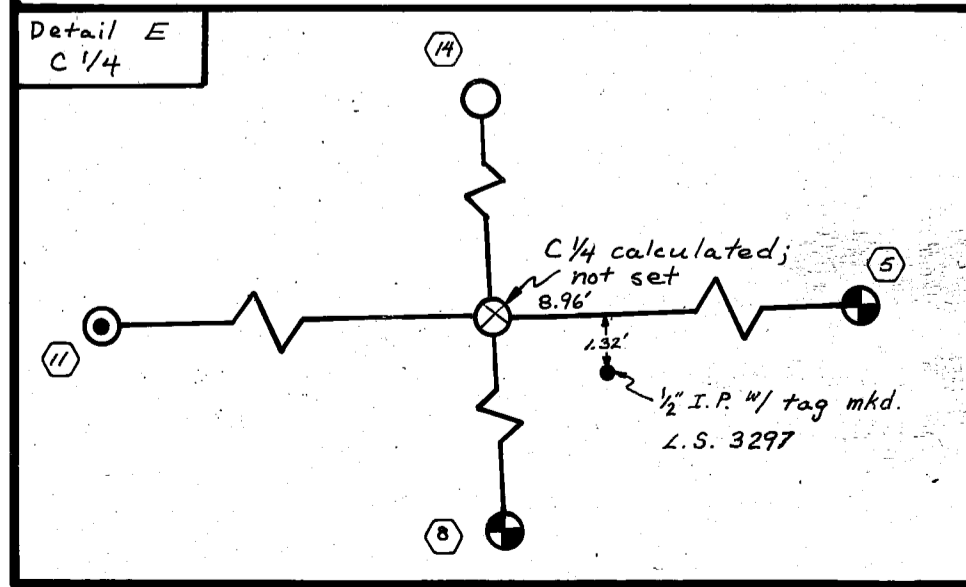
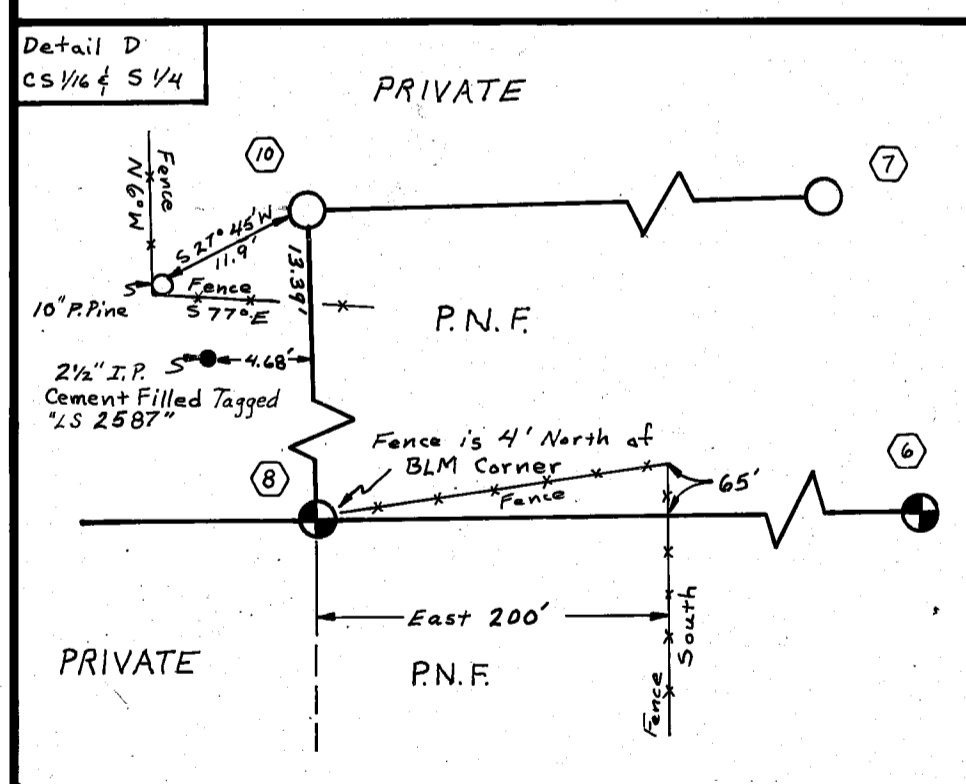
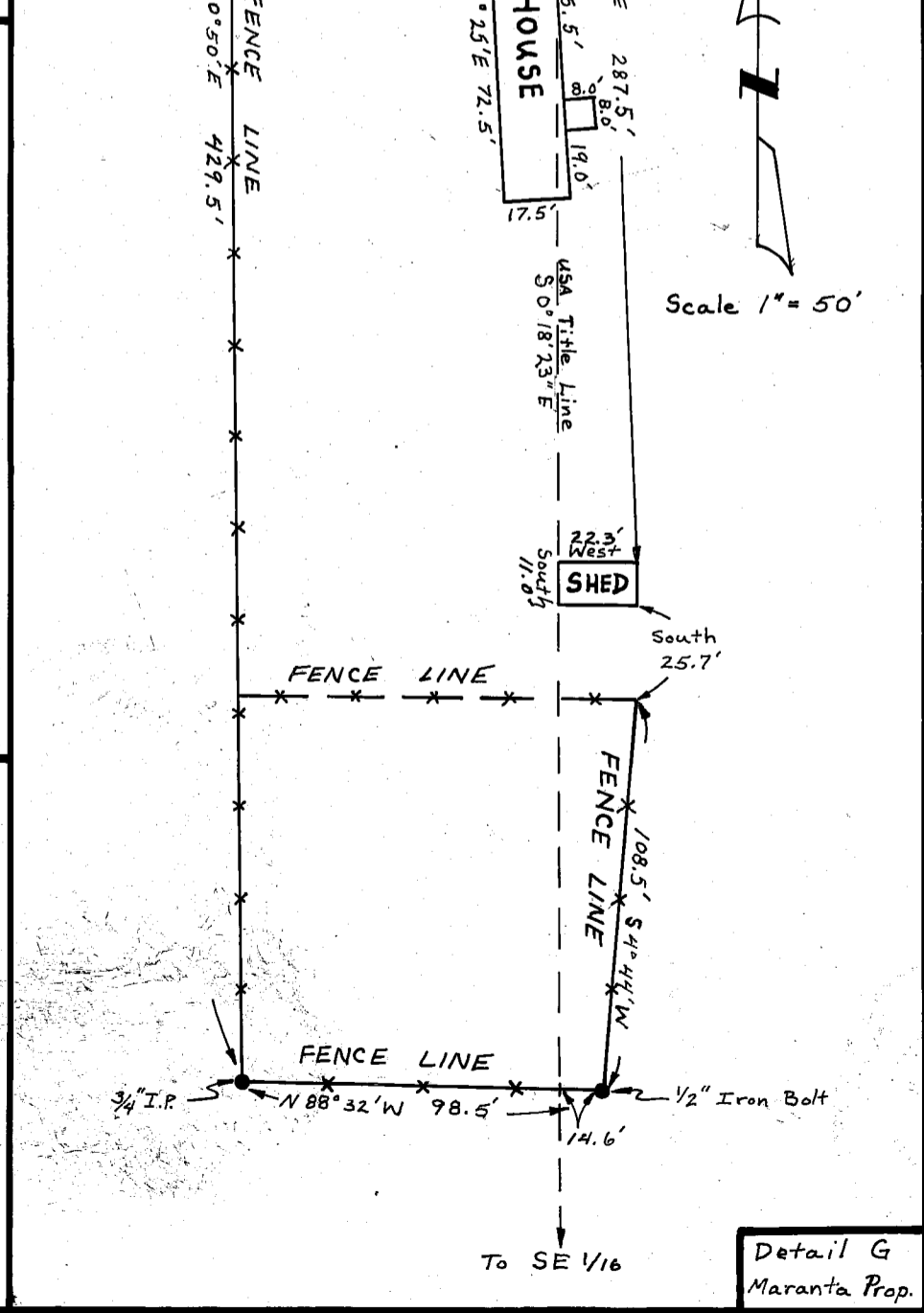
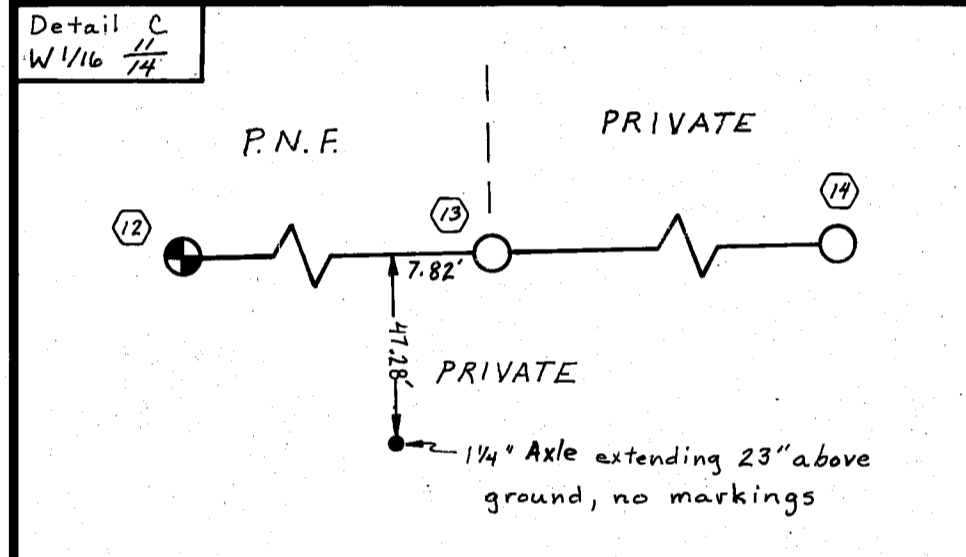
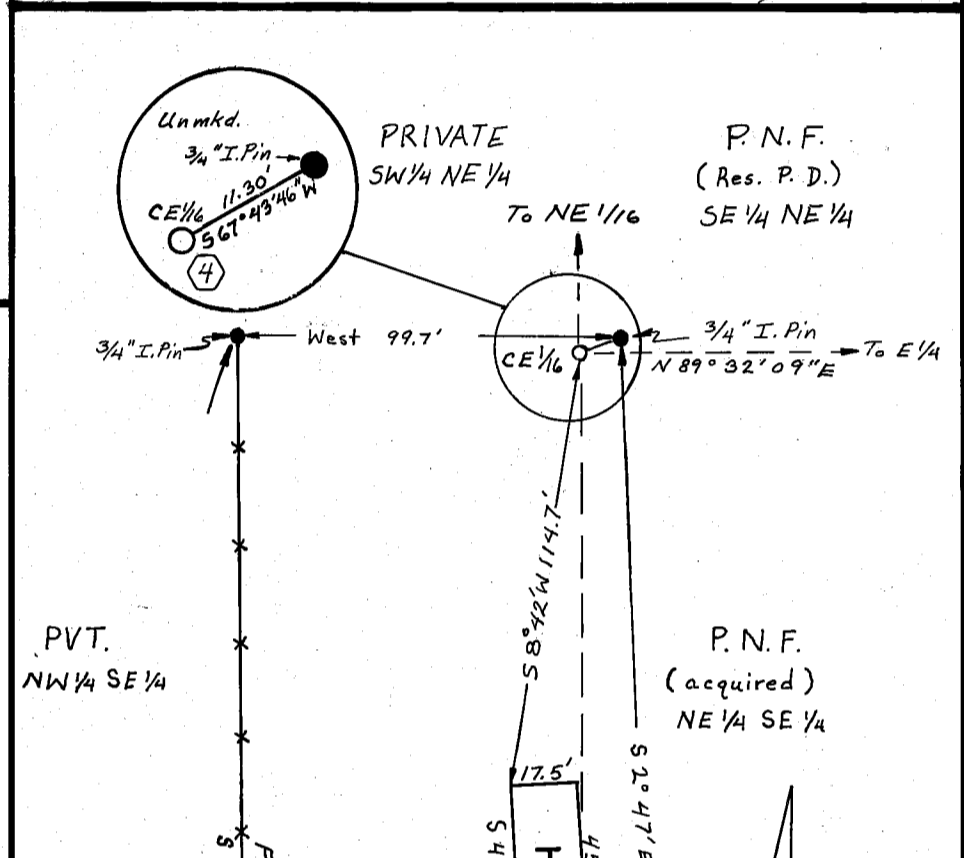
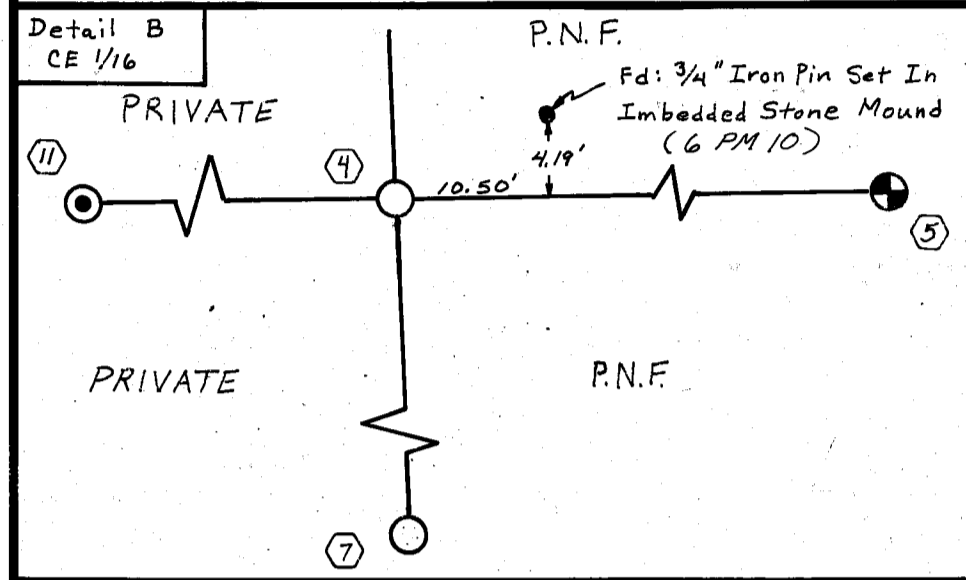
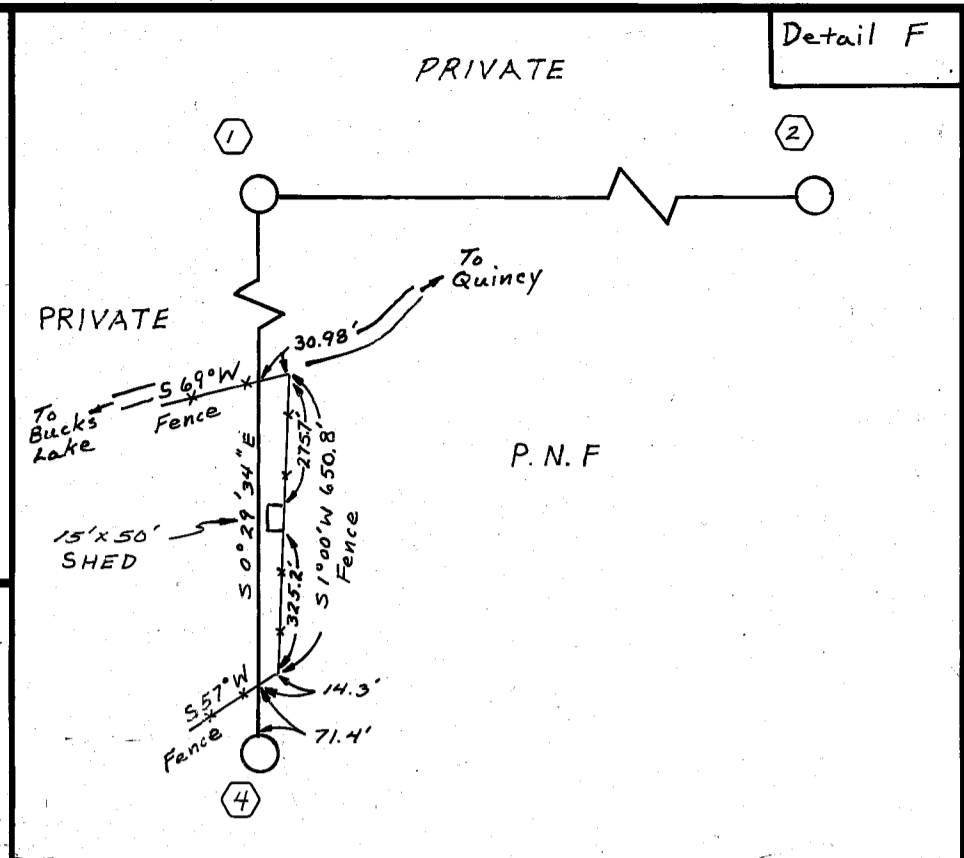
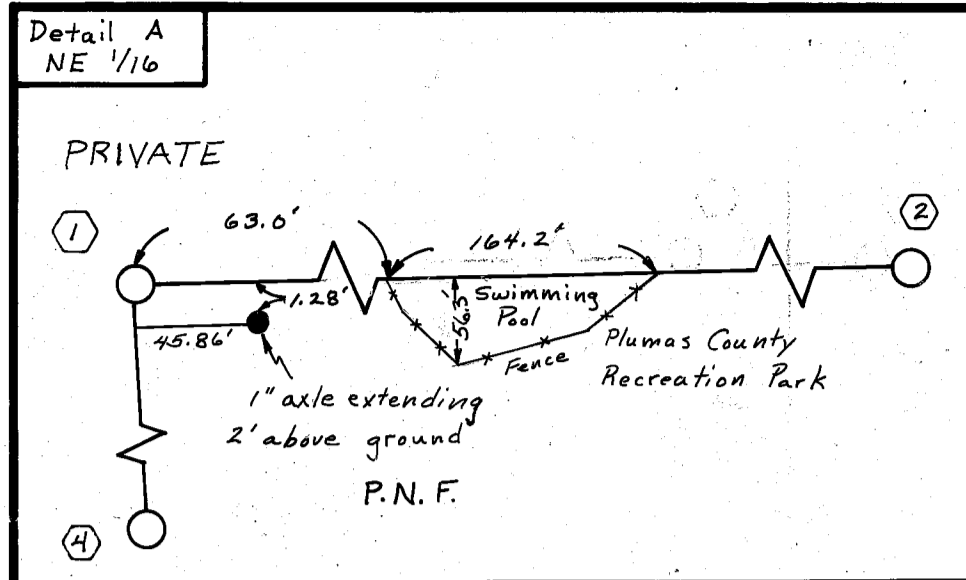
THIS MAP HAS BEEN EXAMINED FOR CONFORMANCE WITH THE REQUIREMENTS OF THE LAND SURVEYOR'S ACT THIS 28th DAY OF OCTOBER 19 82.
Lawrence J. Brock
 COUNTY SURVEYOR
 LAWRENCE BROCK R.C.E. 13528

RECORDER'S CERTIFICATE

FILED THIS 28th DAY OF October, 19 82, AT 1:12 P.M. IN BOOK 6 OF Record of Surveys AT PAGE 82, AT THE REQUEST OF THE COUNTY ENGINEER.
 FEE: \$ 7.00
 FILE NO. 3331
 ILA DIGGS
 COUNTY RECORDER
 BY Frances Nicol
 DEPUTY

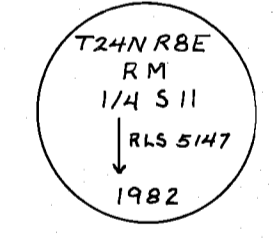
RECORD OF SURVEY

SECTION 14 T 24N, R 8E, M.D.M.
 IN THE UNINCORPORATED AREA OF PLUMAS COUNTY, CALIFORNIA FOR THE UNITED STATES FOREST SERVICE.
 JULY 1982 SCALE: 1" = 500'
 RALPH KOEHNE R.L.S. 5147



CORNER NOTES

- ① NE 1/16 Set: a std. USFS monument in stone mound, from which brs. a 33" P.P. S 82° 29' E 49.6 ft. scribed "NE 1/16 S14 BT"; a 26 1/2" P.P. S 14° 48' E 35.6 ft. scribed "NE 1/16 S14 BT".
- ② N 1/16 14/13 Set: a std. USFS monument in stone mound, from which brs. a 14" P.P. S 87° 07' E 56.4 ft. scribed "N 1/16 S13 BT"; a 13" P.P. S 37° 19' W 63.8 ft. scribed "N 1/16 S14 BT".
- ③ 11/12 / 14/13 Fd: a std. 2 1/2" BLM brass cap monument in stone mound, from which brs. a 5" I.C. N 19° E 29 lks.; a 6" I.C. S 19° E 21 lks.; a 7" P.P. S 36° W 51 lks.; a 7" P.P. N 62° W 51 lks.; as per official BLM record.
- ④ CE 1/16 Set: a std. USFS monument in stone mound, from which brs. a 12" P.P. N 30° 37' E 17.8 ft. scribed "CE 1/16 S14 BT"; a 23" P.P. S 53° 36' E 72.6 ft. scribed "CE 1/16 S14 BT".
- ⑤ 14/13 Fd: a std. 2 1/2" BLM brass cap monument in stone mound, from which brs. a 26" P.P. N 75° W 100 lks.; a 6" D.F. S 48° E 24 lks.; a 8" W.F. S 35° W 3 1/2 lks.; as per official record. (BLM)
- ⑥ 14/13 / 23/24 Fd: a std. 2 1/2" BLM brass cap monument in stone mound, from which brs. a 54" D.F. N 63° E 71 lks.; a 9" Fir N 51° W 39 lks.; a 10" B.O. S 41° E 36 lks.; a 7" Fir S 69° W 17 lks.; as per official BLM record.
- ⑦ SE 1/16 Set: a std. USFS monument in stone mound, from which brs. a 15" S.P. N 86° 02' E 59.3 ft. scribed "SE 1/16 S14 BT"; a 12" P.P. S 8° 27' W 38.9 ft. scribed "SE 1/16 S14 BT".
- ⑧ 1/4 14/23 Fd: a std. 2 1/2" BLM brass cap monument in stone mound, from which brs. a 31" P.P. N 11° E 98 lks.; a 6" W.F. N 50° E 37 1/2 lks.; a 8" P.P. S 21° E 98 lks.; as per official BLM record.
- ⑨ 15/14 / 22/23 Fd: a 3/4" I.P. w/ metal tag mkd. "RCE 13528" in stone mound. Replaced I.P. w/ a std. USFS monument in stone mound, from which brs. a 13 1/2" P.P. N 12° E 9.8 ft. scribed "T24NR8E S14 BT"; a 20" P.P. S 27° E 7.0 ft. scribed "T24NR8E S23 BT".
- ⑩ CS 1/16 Set: a std. USFS monument in stone mound, from which brs. a 16" P.P. N 67° 01' E 11.3 ft. scribed "CS 1/16 S14 BT"; a 13" D.F. N 36° 19' W 2.6 ft. scribed "CS 1/16 S14 BT".
- ⑪ 15/14 Fd: a 1/2" x 2" x 35" Iron Stake mkd. "S.R.CO." at a fence corner, from which brs. a 34" Pine Stump N 26 1/2° E 58 lks. (G.L.O. record: N 17 1/2° E 64 lks.); a 31" Pine Stump S 80° W 106 lks. (G.L.O. record: S 84° W 91 lks.). Replaced Iron Stake w/ a std. USFS monument in stone mound, from which brs. a 21" P.P. N 62° E 33.8 ft. scribed "1/4 S14 BT"; a 27 1/2" P.P. N 16 1/2° W 45.7 ft. scribed "1/4 S15 BT".
- ⑫ 10/11 / 15/14 Fd: a std. 2 1/2" BLM brass cap monument in stone mound, from which brs. a 8" P.P. N 53° E 27 lks.; a 10" W.F. S 67° E 39 lks.; a 10" W.F. S 49° W 18 lks.; a 9" P.P. N 42° W 66 lks.; as per official BLM record.
- ⑬ W 1/16 11/14 Set: a std. USFS monument in stone mound, from which brs. a 17" P.P. N 53° 35' W 13.8 ft. scribed "W 1/16 S11 BT"; a 17" P.P. S 71° 04' E 11.6 ft. scribed "W 1/16 S14 BT".
- ⑭ 1/4 11/14 Set: a std. USFS monument in stone mound, from which brs. a reference monument, a std. USFS monument in stone mound, N 0° 12' W 186.28 ft. mkd. as shown below:



NOTE: The std. USFS monument is a Bernsten A-1-BR Break-off Monument consisting of a 2" diameter aluminum pipe, 27 1/2" long, w/ a magnet in a 2 1/2" x 5" cast aluminum base designed to break off on impact if the monument is disturbed, and a 3/4" aluminum cap mkd. as per the Manual Of Instructions For The Survey Of The Public Lands Of The United States, 1973 for the respective corners.

NOTE: Details A, B, C, D, E, F are not to scale.