

SCALE: 1"=1000'

BASIS OF BEARINGS

North from solar observation taken near the 1/4 corner of Sections 18 and 19

LEGEND

- CORNERS FOUND as noted
- CORNERS SET as noted
- LINE POINTS SET— 3/4" I.P. tagged LS 4753
- (~) G.L.O. DATA
- [~] DATA per 5 RS 52
- ① KEY to CORNER NOTES

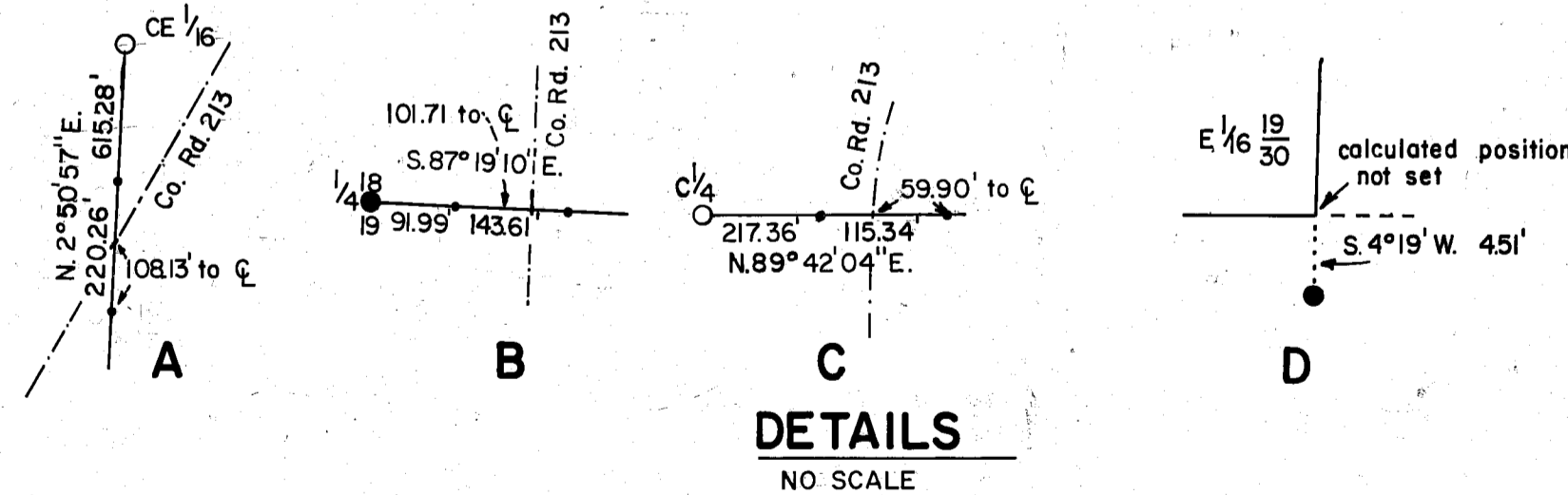
GENERAL NOTES

- Monuments supplied by the U.S.F.S. are 2" pipe with 3" caps all manufactured of aluminum. The corner identification was stamped on the cap as per the 1973 B.L.M. "Manual of Instructions".
- Trees marked as accessories to corner monuments were scribed according to B.L.M. and U.S.F.S. practice. The ties shown were measured to the apparent center of the trees.

CORNER NOTES

- 1/4 12/7 Fd. scattered mound of rock and original B.T.'s: 22" J. Pine S.72°W. 54.5' (G.L.O.: 53.5'), Pine snag N.25°E. 47.5' I set U.S.F.S. mon. in m.o.r. and marked new B.T.: 13" S. Pine N.41°E. 26.7'
- 7/8 18/17 Fd. 1968 B.L.M. brass cap mon. in m.o.r. and existing B.T.'s: 48" P. Pine S.14°W. 27.1' (orig.), 9" Fir S.80°E. 16.8', 10" Fir N.29°E. 19.1', 7" Cedar N.48°W. 6.3' (all B.L.M.)

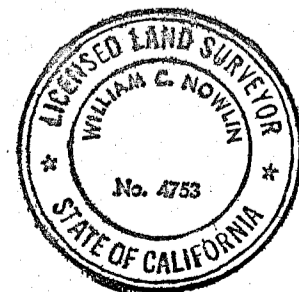
- 1/4 13/18 Fd. orig. G.L.O. tree corner: 24" Pine with healed scar on west side. Fd. orig. B.T.'s: 24" Cedar S.70°E. 21.1', 7" Fir N.85°W. 15.2' I set U.S.F.S. mon. as reference mon. S.52°W. 5.8' and marked new B.T.: 6" Fir N.54°W. 6.5' (both from tree corner)
- 13/18 23/19 Fd. 12'x10'x8' stone in m.o.r. and orig. B.T.'s: 30" Cedar N.46°E. 47.5' (down), 27" Cedar S.40°E. 35.6'. I set U.S.F.S. mon. for corner and marked new B.T.'s: 10" Fir N.51°W. 10.3', 8" Cedar N.83°E. 6.3', 12" Pine S.34°W. 48.0'
- 1/4 18/19 Fd. 1968 B.L.M. brass cap mon. and existing B.T.'s: 30" B. Oak N.18°E. 27.4' (orig.), 11" Fir N.67°W. 7.3', 8" Fir S.63°E. 12.9' (B.L.M.)
- 18/17 19/20 Fd. 18" D. Fir tree corner and orig. B.T.'s: 28" D. Fir N.30°E. 26.7', 18" P. Pine N.22°W. 28.4', 17" Cedar S.46°E. 26.4'; Fd. 1968 B.L.M. ref. mon. N.48°E. 10.1' and B.L.M. B.T.: 19" S. Pine S.52°W. 25.7'
- 1/4 24/19 Fd. orig. B.T.'s: 11" Pine S.5°E. 21.1' (rec. S.5°W.), 20" Pine N.75°E. 29.7'. I set U.S.F.S. mon. and marked new B.T.: 7" Cedar S.15°W. 3.0'
- 1/4 19/20 Fd. 1968 B.L.M. brass cap mon. and B.T.'s: 15" Fir S.66°E. 20.5' (orig.), 15" Fir N.15°W. 7.9', 8" Fir N.32°E. 9.2' (B.L.M.)
- 24/19 25/30 Fd. 1/2" rebar w/plastic cap L.S. 3297 per 5 RS 52. I replaced with U.S.F.S. mon. and set rebar alongside. I tagged R.P.s: 28" Fir S.23°E. 15.2', 11" Cedar S.50°W. 68.0', 9" Fir N.27°W. 35.3'
- 1/6 19/30 Fd. 1/2" rebar L.S. 3297 per 5 RS 52 (see Detail "D"). I marked B.T. to rebar: 5" Pine North 9.5'
- 19/20 30/29 Fd. 1/2" rebar L.S. 3297 per 5 RS 52. I replaced with U.S.F.S. mon. and set rebar alongside. I marked new B.T.'s: 9" Fir S.4°W. 27.9', 10" B. Oak S.29°E. 27.4', 17" Pine N.22°E. 30.3'
- 12/13 18 Prorate position determined per Sec. 5-36 B.L.M. Manual. Nothing set.
- 1/4 7/18 Set U.S.F.S. mon. at prorate position and marked B.T.'s: 4" Fir S.22°E. 11.3', 8" Fir N.21°E. 26.7'
- c/4 18 Set U.S.F.S. mon. and marked B.T.'s: 14" Fir S.43°W. 18.5', 9" Fir N.10°W. 4.7'
- c/6 18 Set 3/4" I.P. tagged L.S. 4753 and marked B.T.: 17" Pine S.9°W. 19.2'
- 1/4 18/17 Set U.S.F.S. mon. at prorate position and marked B.T.'s: 10" Fir S.7°E. 7.0', 6" Fir N.48°W. 15.0'
- 1/6 18/19 Set U.S.F.S. mon. and marked B.T.'s: 7" Fir S.28°E. 18.3', 6" B. Oak N.21°E. 13.6'
- c/4 19 Set U.S.F.S. mon. and marked B.T.'s: 9" Poplar N.88°E. 12.7', 9" Fir N.61°W. 60.0'
- c/6 19 Set U.S.F.S. mon. and marked B.T.'s: 6" Fir N.40°W. 5.2', 6" Fir S.37°W. 6.6'
- 1/4 19/30 Fd. 1/2" rebar L.S. 3297 per 5 RS 52. I replaced with U.S.F.S. mon., set rebar alongside, and marked B.T.: 12" Pine N.13°W. 12.5'



SURVEYOR'S CERTIFICATE

THIS MAP CORRECTLY REPRESENTS A SURVEY MADE BY ME OR UNDER MY DIRECTION IN CONFORMANCE WITH THE REQUIREMENTS OF THE LAND SURVEYORS ACT IN AUG.-SEPT. 19 82 AT THE REQUEST OF LEN FRANZ, Agent

William C. Nowlin
William C. Nowlin L.S. 4753



COUNTY SURVEYOR'S CERTIFICATE

THIS MAP HAS BEEN EXAMINED THIS 28TH DAY OF October 19 82 FOR CONFORMANCE WITH THE REQUIREMENTS OF THE LAND SURVEYOR'S ACT.

COUNTY SURVEYOR Lawrence J. Brock RCE 13528
DEPUTY

RECORDER'S CERTIFICATE

FILED THIS 3RD DAY OF November 19 82 AT 1:30 P.M. IN BOOK 6 OF RECORD OF SURVEYS AT PAGE 84 AT THE REQUEST OF THE COUNTY ENGINEER FEE: \$ 500 FILE: 3451

COUNTY RECORDER Ila Diggs
DEPUTY Dick Cammack

RECORD OF SURVEY

for GLASS, SPITZER, & NASCH Sections 18-19, T.27N. R.11E. MDM.

PLUMAS COUNTY STATE OF CALIFORNIA
Burgess Land Surveys 7036 "D" Hwy. 99 S. Redding, Cal. 96001 Sheet 1 of 1