

RECORD OF SURVEY

of a portion of the NE 1/4, NE 1/4 of Section 20,
T24N, R10E, M.D.M described in a deed to Walter and
Eva Clark dated September 24, 1979 and filed in
Volume 316 of the Official Record at Page 495.

IMPORTANT NOTE:

FILED CONCURRENTLY WITH THIS MAP ARE GRANT
DEEDS BETWEEN CLARK AND STEINHOFF IN
VOLUME 380 OR PAGE 478
VOLUME 380 OR PAGE 477

Record bearings & distances between sec.cor. & 1/4 cor.
(N88°31'47"W 2678.68' 7PM41)
(N89°29'19"W 2678.26' 5RS 114)
N88°46'40"W 2678.66' Measured

Found 1/4 Corner
1 1/2" IP IN ROCK MOUND
tagged RCE 30095 per 6RS18
BT 12" DIA. Pine stump W/K-tag
N 22°W 6.80'

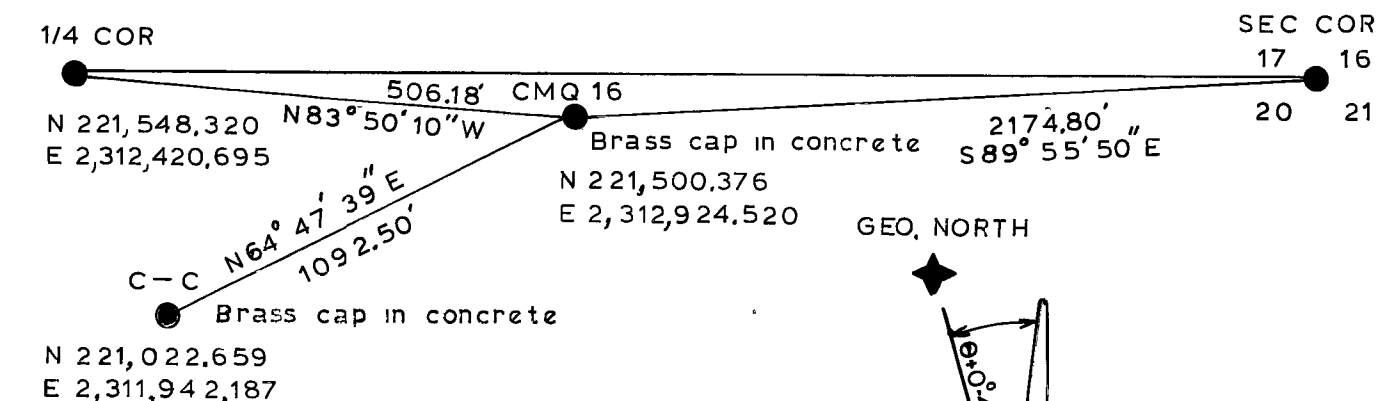
PLUMAS
COMMUNITY
ASSOCIATES
362 OR 353

WEST 1000.00'
S75°15'09"E 106.69'
STEINHOFF
39 OR 110

CLARK
316 OR 495

Found Section Corner
1" IP in rock mound
tagged LS 2587
per 3 R/S 70
B.T. 18" DIA. B. Oak W/K-tag
N 75°E 34.32'
BT 12" DIA. B. Oak W/K-tag
S 53.5°W 14.19'

PLUMAS COUNTY, CALIFORNIA
AUGUST, 1981



BASIS OF BEARINGS

Bearings are based on California Coordinates per 4RS126 and corrected to true North. All distances shown are ground distances. To change ground distance to grid distance multiply by 0.99985. All Coordinates are in Zone 1.

CMQ 15
N 221,347.345
E 2,312,400.081

COUNTY RECORDER'S CERTIFICATE

Filed this 29th day of December, 1982, at 2:05 PM, in Book 6 of Record of Surveys, at Page 90, at the request of the County Engineer,

Ila Diggs
County Recorder

Fee \$ 500
File No. 4799

By Beth Cammack
Deputy

COUNTY SURVEYOR'S CERTIFICATE

This map has been examined for conformance with the requirements of the Land Surveyor's Act this 29th day of December, 1982.

Lawrence J. Brock RCE 13528
Plumas County Surveyor

SURVEYOR'S CERTIFICATE

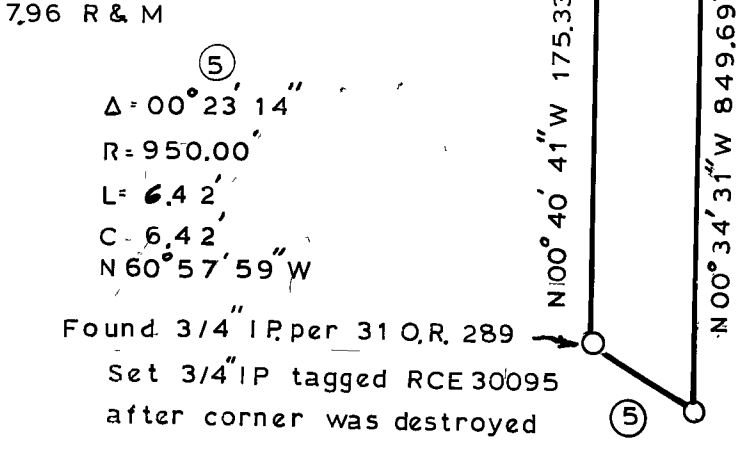
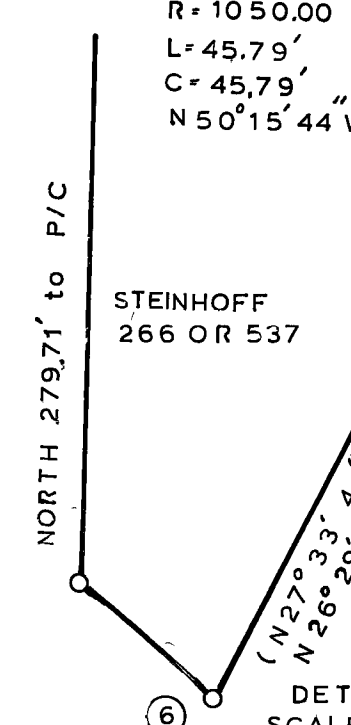
This map correctly represents a survey made by me or under my direction in conformance with the requirements of the Land Surveyor's Act at the request of Walter Clark on August 3, 1981.

William D. Fox RCE 30095

CURVE DATA

① Δ=9°06'12" R=1050.00' L=166.83' C=166.65' N44°27'40"W	② Δ=11°36'08" R=1000.00' L=202.50' C=202.15' N45°42'38"W	③ Δ=20°51'48" (19°47'02") R=950.00' (950.00') L=345.93' (328.03') C=344.03' (326.40') N50°20'28"W (N50°42'31"W)	④ Δ=22°51'12" (21°22") R=1000.00' (1000.00') L=398.87' (373') C=396.25' (370.67') S51°20'10"E (S51°30'E)
--	---	--	---

⑥ Δ=2°29'56" (1°32'12") R=1050.00' (1000.00') L=45.79' (28.16') C=45.79' (28.16') N50°15'44"W
--



FOX ENGINEERING
ROUTE 1 BOX 407
QUINCY, CA 95971

2" I.P. tagged LS 3297
B.T. 18" DIA. Pine stump
W/K tag
N61°W 62.04'