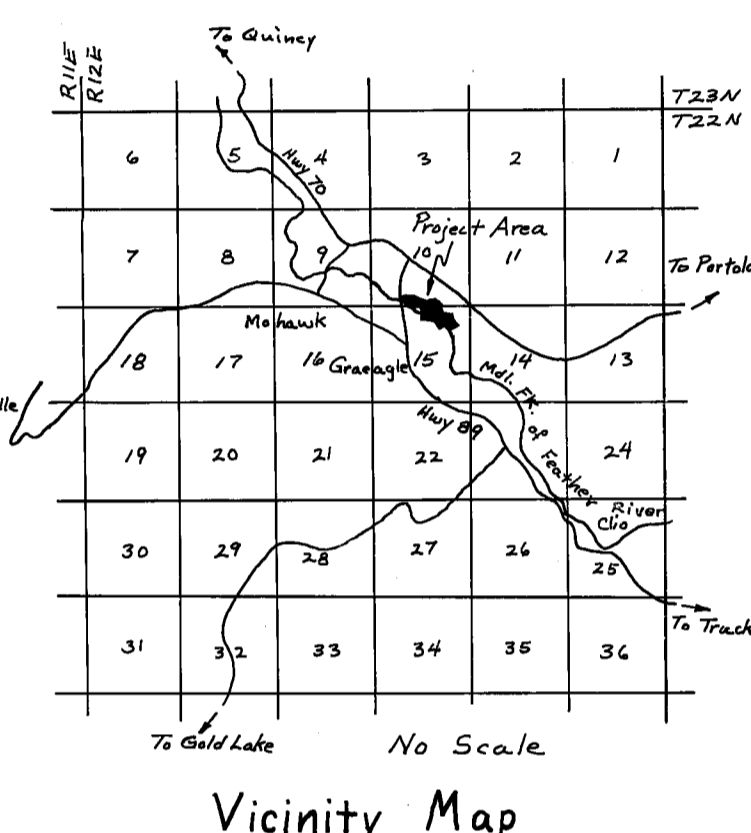
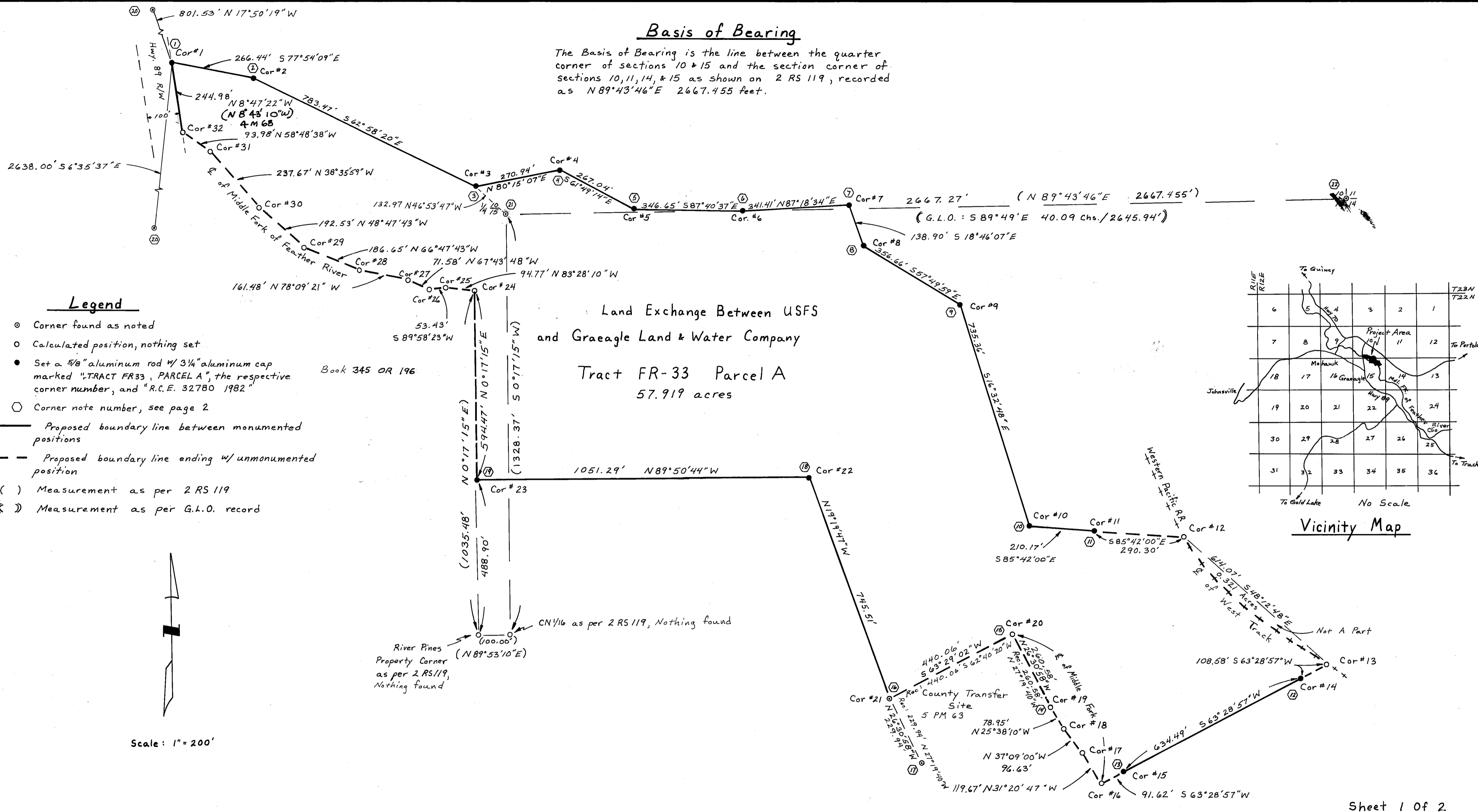


Basis of Bearing

The Basis of Bearing is the line between the quarter corner of sections 10 & 15 and the section corner of sections 10, 11, 14, & 15 as shown on 2 RS 119, recorded as N 89° 43' 46" E 2667.455 feet.



Legend

- Corner found as noted
- Calculated position, nothing set
- Set a 5/8" aluminum rod w/ 3/4" aluminum cap marked "TRACT FR33, PARCEL A", the respective corner number, and "R.C.E. 32780 1982"
- Corner note number, see page 2
- Proposed boundary line between monumented positions
- - Proposed boundary line ending w/ unmonumented position
- () Measurement as per 2 RS 119
- ⊕ Measurement as per G.L.O. record

Land Exchange Between USFS
and Graeagle Land & Water Company
Tract FR-33 Parcel A
57.919 acres

Book 345 OR 196

Scale: 1" = 200'

Sheet 1 of 2

SURVEYOR'S CERTIFICATE

This Map Correctly Represents A Survey Made By Me Or Under My Direction In Conformance With The Requirements Of The Land Surveyor's Act At The Request Of The United States Forest Service In May & June 1982.

Michael August
Michael August R.C.E. 32780

COUNTY SURVEYOR'S CERTIFICATE

This Map Has Been Examined For Conformance With The Requirements Of The Land Surveyor's Act This 24th Of May 1983.

Lawrence J. Brock
County Surveyor
Lawrence Brock R.C.E. 13528

RECORDER'S CERTIFICATE

Filed This 24th Day Of May, 1983,
At 2:30 P.M. In Book 6 Of Record of Surveys
At Page 99, At The Request Of
The County Engineer.

Fee: \$ 7.00
File No. 7869
By *Ila Diggs*
Ila Diggs
County Recorder
Deputy

RECORD OF SURVEY

IN SECTIONS 10 & 15, T22N12E, M.D.M.
IN THE UNINCORPORATED AREA OF PLUMAS COUNTY,
CALIFORNIA, FOR THE UNITED STATES FOREST
SERVICE.
MAY & JUNE 1982 SCALE: 1" = 200'
MICHAEL AUGUST R.C.E. 32780