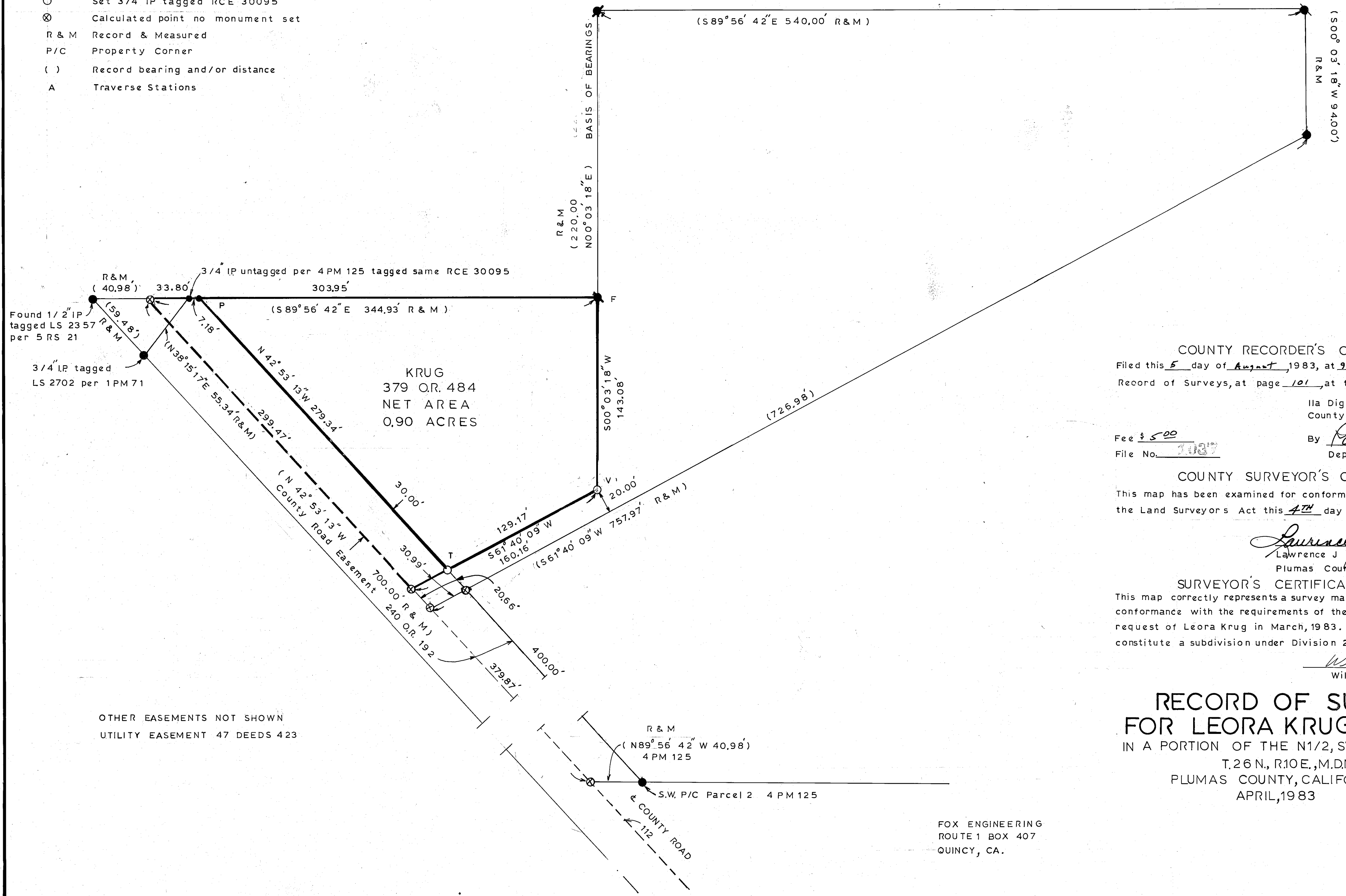
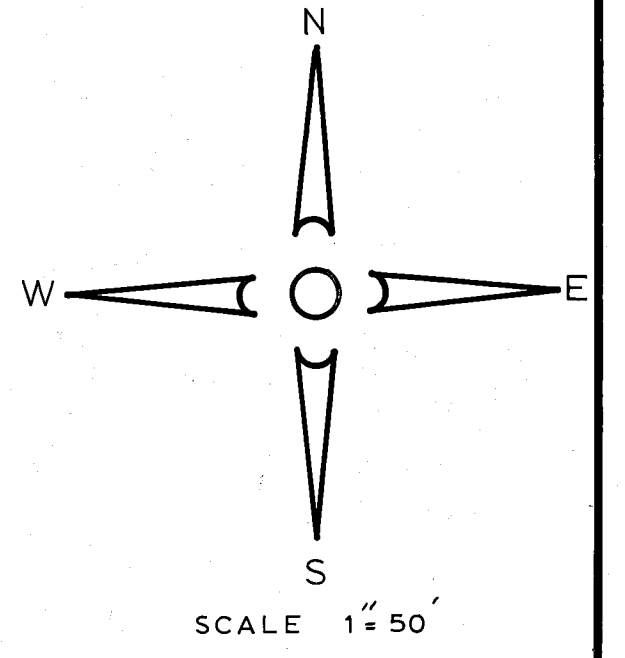


BASIS OF BEARINGS
Bearings are based on the record bearings of 4 PM 125

LEGEND

- Found 1/2" rebar tagged RCE 11173 per 4 PM 125 unless noted otherwise
- Found 3/4" IP tagged LS 2702 per 2 RS 17
- Set 3/4" IP tagged RCE 30095
- ⊗ Calculated point no monument set
- R & M Record & Measured
- P/C Property Corner
- () Record bearing and/or distance
- A Traverse Stations



KRUG
379 O.R. 484
NET AREA
0.90 ACRES

COUNTY RECORDER'S CERTIFICATE
Filed this 5 day of August, 1983, at 9:15 AM, in Book 6 of
Record of Surveys, at page 101, at the request of the County Engineer,

Ila Diggs
County Recorder
By Patricia Lacey
Deputy

COUNTY SURVEYOR'S CERTIFICATE
This map has been examined for conformance with the requirements of
the Land Surveyors Act this 4th day of August, 1983.

Lawrence J. Brock
Lawrence J. Brock RCE 13528
Plumas County Surveyor

SURVEYOR'S CERTIFICATE
This map correctly represents a survey made by me or under my direction in
conformance with the requirements of the Land Surveyors Act at the
request of Leora Krug in March, 1983. This Record of Survey does not
constitute a subdivision under Division 2 of Title 7 of Government.

William D. Fox
William D. Fox RCE 30095

**RECORD OF SURVEY
FOR LEORA KRUG ET. AL.**
IN A PORTION OF THE N1/2, SW1/4, SEC. 4,
T. 26 N., R. 10 E., M. D. M.
PLUMAS COUNTY, CALIFORNIA
APRIL, 1983

OTHER EASEMENTS NOT SHOWN
UTILITY EASEMENT 47 DEEDS 423

FOX ENGINEERING
ROUTE 1 BOX 407
QUINCY, CA.