

NOTES:

- IT IS THE INTENT OF THIS SURVEY TO SHOW AND DEFINE THE RELATIONSHIP BETWEEN THE SECTIONAL BREAKDOWN LINES OF OWNERSHIP PER DEEDS AND THE LINES OF OCCUPATION AS EVIDENCED BY FENCES IN EXISTENCE. THE DEED OWNERSHIP LINES ARE INDICATED HEREON BY A HEAVY SOLID LINE.
- THE APPROXIMATE LOCATION OF THE NORTHWEST CORNER OF SECTION 26, T.23 N., R.15 E. WAS ESTABLISHED BY SINGLE PROPORTIONATE MEASUREMENT BETWEEN THE NORTHEAST CORNER OF SECTION 26 AND THE NORTH QUARTER CORNER OF SECTION 27, FROM FIELD LOCATION AND RECORD CORNERS SHOWN ON 7 P.M. 53, FOR PURPOSE OF DEFINING THE WEST BOUNDARY OF LUCKY HEREFORD RANCH. THE ESTABLISHED POSITION CREATES DIMENSIONS WHICH COMPARE CLOSELY WITH RECORD; HOWEVER THIS IS AN APPROXIMATE CORNER LOCATION ONLY. RESTORATION USING THE NORMAL DOUBLE PROPORTION METHOD WOULD REQUIRE SURVEY TO, AND ALONG THE NORTH TOWNSHIP LINE; SINCE NO INTERVENING CORNERS WERE FOUND.
- THERE IS NO STATE HIGHWAY RIGHT-OF-WAY OF RECORD WITHIN SECTION 26 OR WITHIN THE WEST HALF OF SECTION 25, T.23 N., R.15 E.

BASIS OF BEARINGS:

THE BASIS OF BEARINGS FOR THIS MAP IS THE EAST LINE OF SECTIONS 13, 24 AND 25, T.23 N., R.15 E., M.D.B.&M., GIVEN AS $500^{\circ}33'36''E$, IN BOOK 7 OF PARCEL MAPS AT PAGE 53, PLUMAS COUNTY RECORDS.

LEGEND

- ◊, ○ - FOUND MONUMENT AS NOTED
- ⊕, ⊙ - COMPUTED CORNER
- - SET $\frac{5}{8}$ " REBAR WITH CAP - L.S. 4942
- - INDICATES FOUND CHC 6"x6" MONUMENT (R.&M.) - INDICATES RECORD & MEASURED DATA
- () - INDICATES RECORD DATA AS NOTED
- 123 O.R. 456 - OFFICIAL RECORDS, BOOK AND PAGE
- 12 D 345 - DEED, BOOK AND PAGE
- 1 P.M. 23 - PARCEL MAP, BOOK AND PAGE
- 1 R.S. 23 - RECORD OF SURVEY, BOOK AND PAGE

SURVEYOR'S CERTIFICATE

THIS MAP CORRECTLY REPRESENTS A SURVEY MADE BY ME OR UNDER MY DIRECTION IN CONFORMANCE WITH THE REQUIREMENTS OF THE LAND SURVEYOR'S ACT AT THE REQUEST OF LUCKY HEREFORD RANCH, A PARTNERSHIP, IN SEPTEMBER, 1983.

SIGNED: Thomas A. Foote
 THOMAS A. FOOTE L.S. 4942
 LICENSED LAND SURVEYOR
 STATE OF CALIFORNIA
 No. 4942

COUNTY SURVEYOR'S CERTIFICATE

THIS MAP HAS BEEN EXAMINED FOR CONFORMANCE WITH THE REQUIREMENTS OF THE LAND SURVEYOR'S ACT THIS DAY OF , 1984. THIS RECORD OF SURVEY DOES NOT CONSTITUTE A SUBDIVISION UNDER DIVISION 2 OF TITLE 7 OF THE GOVERNMENT CODE.

SIGNED: Lawrence J. Brock
 LAWRENCE J. BROCK R.C.E. 13528
 PLUMAS COUNTY SURVEYOR

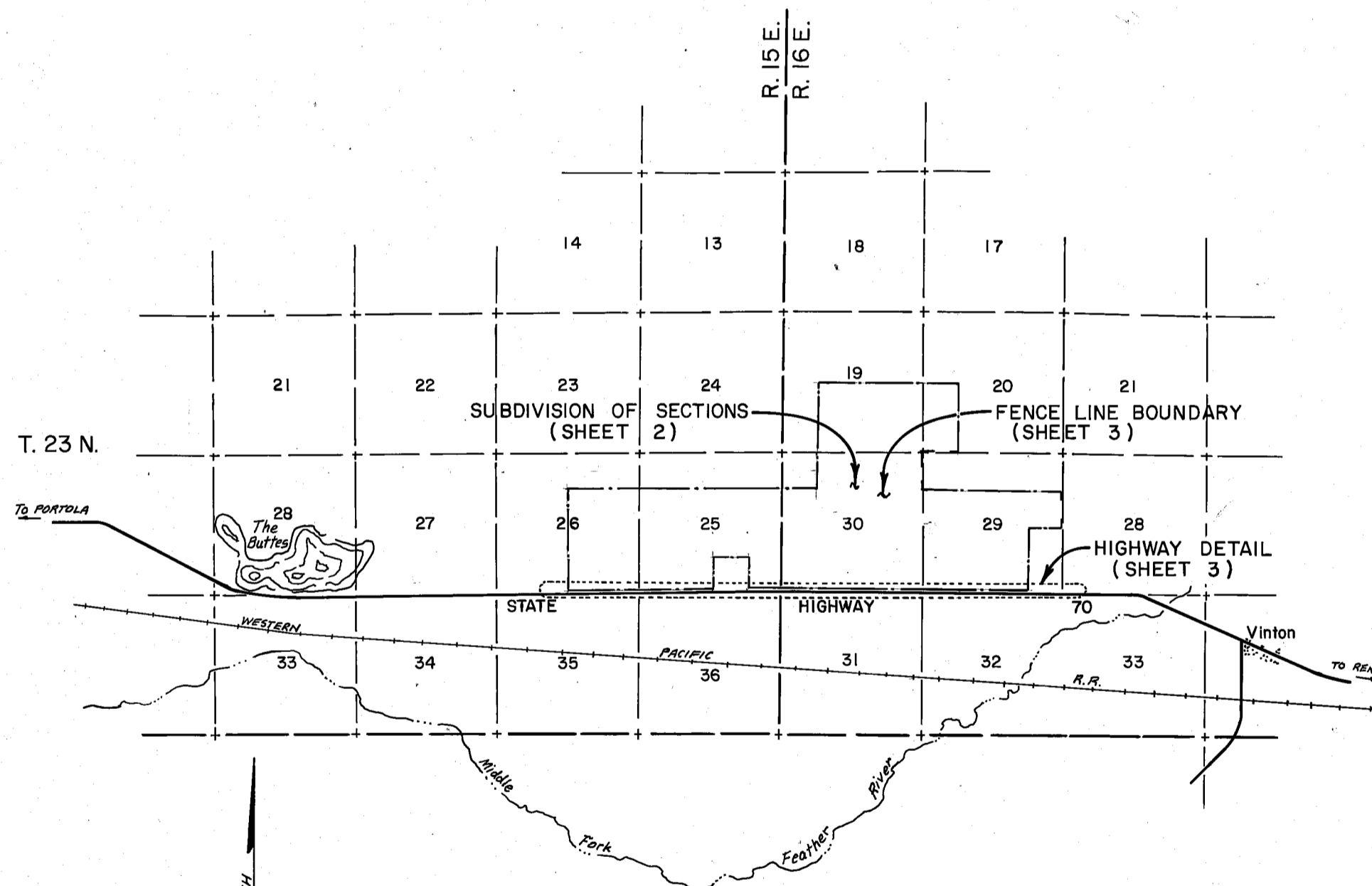
COUNTY RECORDER'S CERTIFICATE

FILED THIS 13th DAY OF April, 1984, AT 2:30 A.M. IN BOOK 6 OF RECORD OF SURVEYS, AT PAGE 13, 14, 15, AT THE REQUEST OF THE COUNTY ENGINEER.

ILA DIGGS
 COUNTY RECORDER

FEE \$ 9.00
 FILE NO. 7674

BY: Patricia Lacey
 DEPUTY



LOCATION MAP & SHEET INDEX
 SCALE: 1" = 1 MILE

RECORD OF SURVEY

FOR
 LUCKY HEREFORD RANCH, A PARTNERSHIP

WITHIN SECTIONS 25 AND 26 OF T.23 N., R.15 E. M.D.B.&M. AND WITHIN SECTIONS 19, 20, 29 AND 30 OF T.23 N., R.16 E. M.D.B.&M. IN PLUMAS COUNTY, CALIFORNIA

BY:
 THOMAS A. FOOTE AND ASSOCIATES, LTD.
 160 HUBBARD WAY
 RENO, NEVADA 89504
 L.S. 4942