

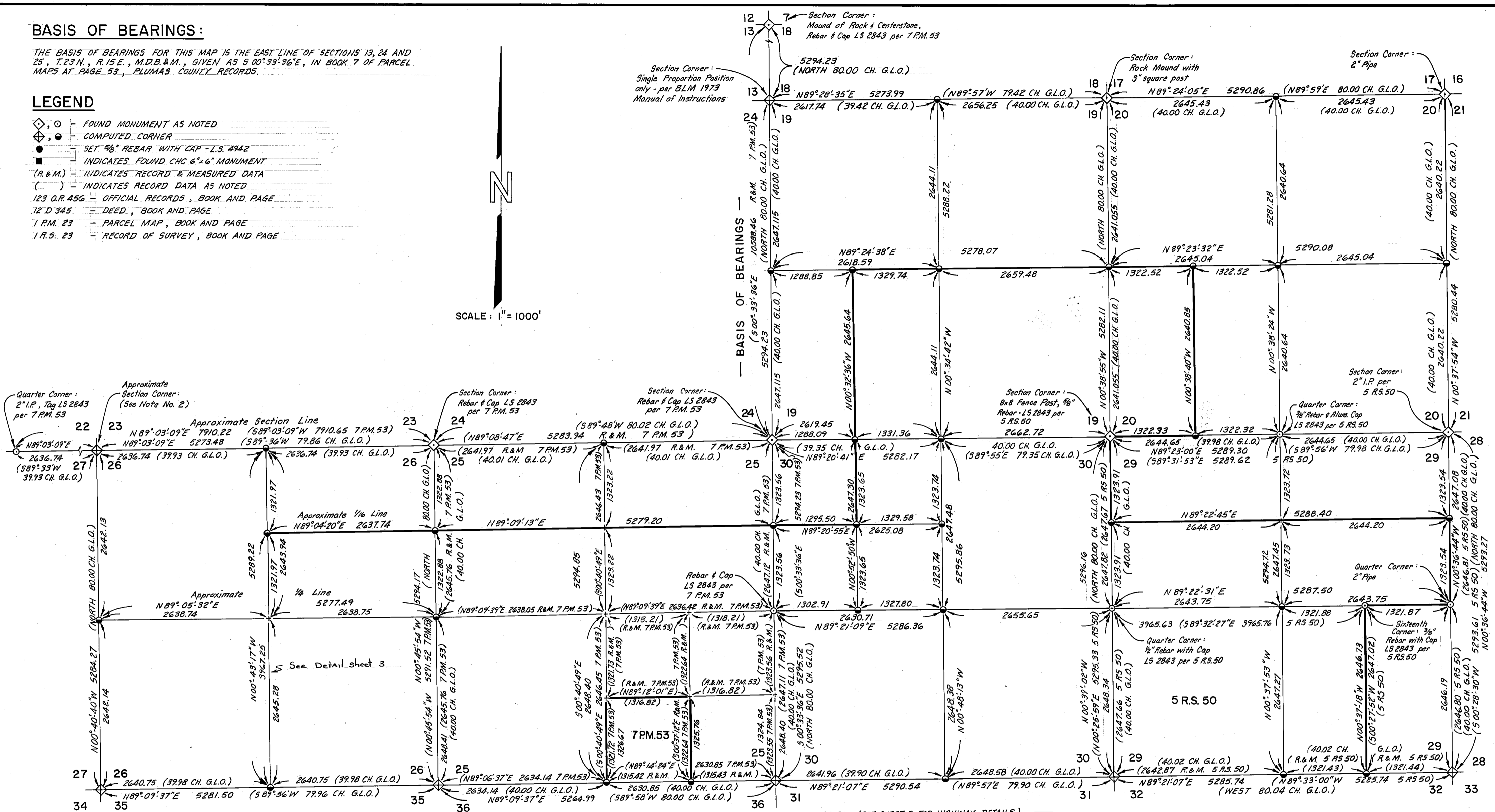
**BASIS OF BEARINGS:**

THE BASIS OF BEARINGS FOR THIS MAP IS THE EAST LINE OF SECTIONS 13, 24 AND 25, T.23 N., R.15 E., M.D.B. & M., GIVEN AS  $9^{\circ}00'33''36''E$ , IN BOOK 7 OF PARCEL MAPS AT PAGE 53, PLUMAS COUNTY RECORDS.

**LEGEND**

- ◊, ○ FOUND MONUMENT AS NOTED
- ◊, ● COMPUTED CORNER
- SET  $\frac{5}{8}$ " REBAR WITH CAP - L.S. 4942
- INDICATES FOUND CHC 6"x6" MONUMENT
- (R.&M.) INDICATES RECORD & MEASURED DATA
- ( ) INDICATES RECORD DATA AS NOTED
- 123 O.R. 456 OFFICIAL RECORDS, BOOK AND PAGE
- 12 D 345 DEED, BOOK AND PAGE
- 1 P.M. 23 PARCEL MAP, BOOK AND PAGE
- 1 R.S. 23 RECORD OF SURVEY, BOOK AND PAGE

SCALE: 1" = 1000'



R.15E. R.16E.  
**SUBDIVISION OF SECTIONS**  
 PORTION OF T.23 N., R.15 & 16 E., M.D.B. & M.

**RECORD OF SURVEY**

PREPARED BY:  
 THOMAS A. FOOTE AND ASSOCIATES, LTD.  
 160 HUBBARD WAY  
 RENO, NEVADA 89504  
 L.S. 4942

FOR  
 LUCKY HEREFORD RANCH, A PARTNERSHIP  
 PLUMAS COUNTY, CALIFORNIA

JANUARY, 1984

SHEET 2 OF 3