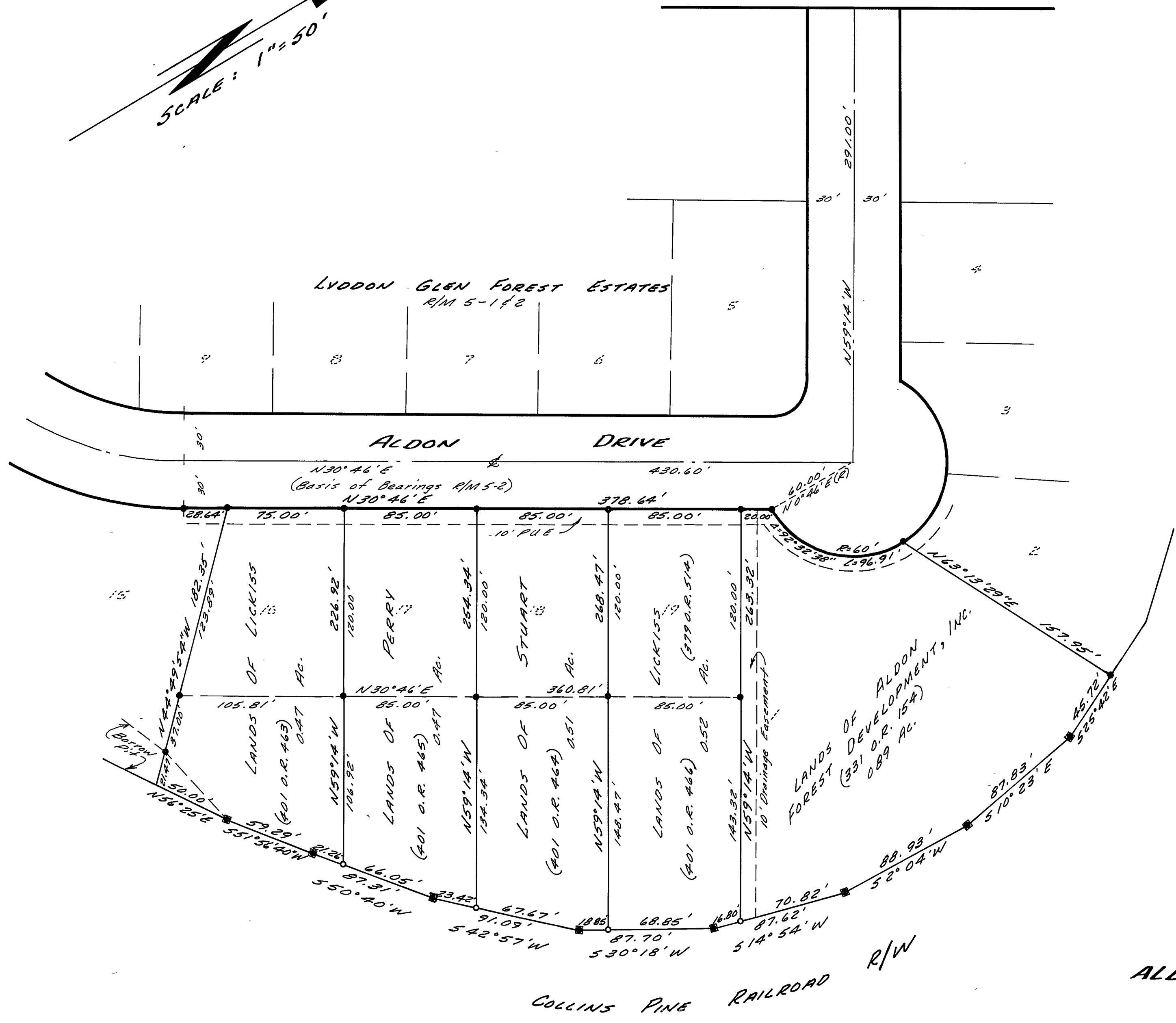
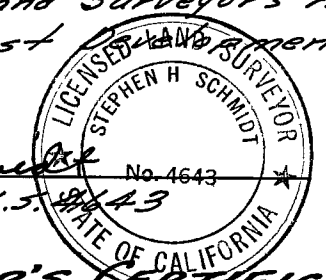


CALIF. STATE HWY. No. 36
To Chester

SCALE: 1" = 50'



SURVEYOR'S CERTIFICATE:
This map correctly represents a survey made by me or under my direction in conformance with the requirements of the Land Surveyor's Act at the request of Aldon Forest Development, Inc. in Nov. 1983



Stephen H. Schmidt
Stephen H. Schmidt, L.S. 4643

COUNTY SURVEYOR'S CERTIFICATE:
This map has been examined for conformance with the requirements of the Land Surveyor's Act this 3 day of May, 1984

Lawrence J. Brock
Lawrence J. Brock, Plumas Co. Surveyor, R.C.E. 13528

COUNTY RECORDER'S CERTIFICATE:
Filed this 3 day of May, 1984, at 11:20 A.M. in Book 6 of Record of Surveys of page 116, at the request of the County Engineer.
Fee: \$5.00 File No. 8066
Ila Diggs, Plumas County Recorder

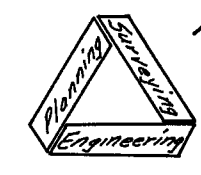
by: Beth Cammack
Deputy

LEGEND

- Found 3/4" iron pipe tagged "L.S. 3202" per P/M 7-14 & 15.
- Found 1/2" or 1" iron pipe tagged "L.S. 3202" per R/M 5-1 & 2.
- Set 3/4" iron pipe tagged "L.S. 4643".

RECORD OF SURVEY FOR
ALDON FOREST DEVELOPMENT, INC.
IN THE S.E. 1/4, SEC. 7, T.28N., R. 7E., M.D.B. & M.
PLUMAS COUNTY, CALIFORNIA

SCALE: 1" = 50'



NST Engineering Associates, Inc.
45 South Loop Street
Susanville, California
916-257-5173

Sheet 1 of 1