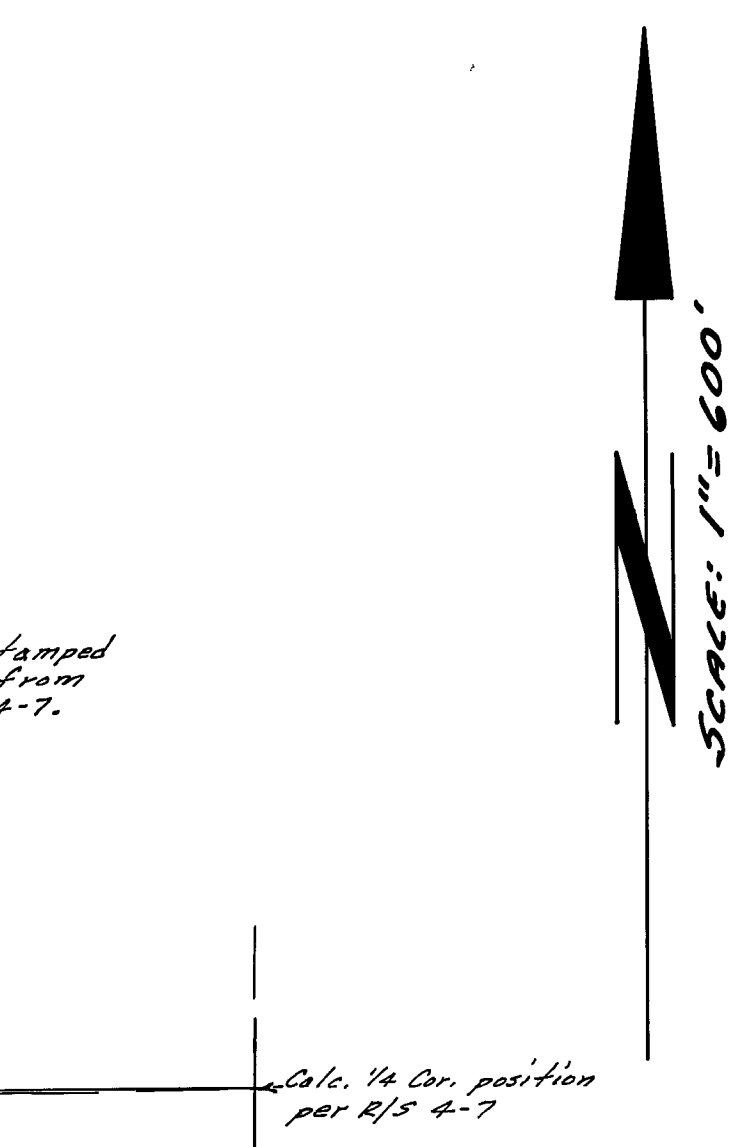
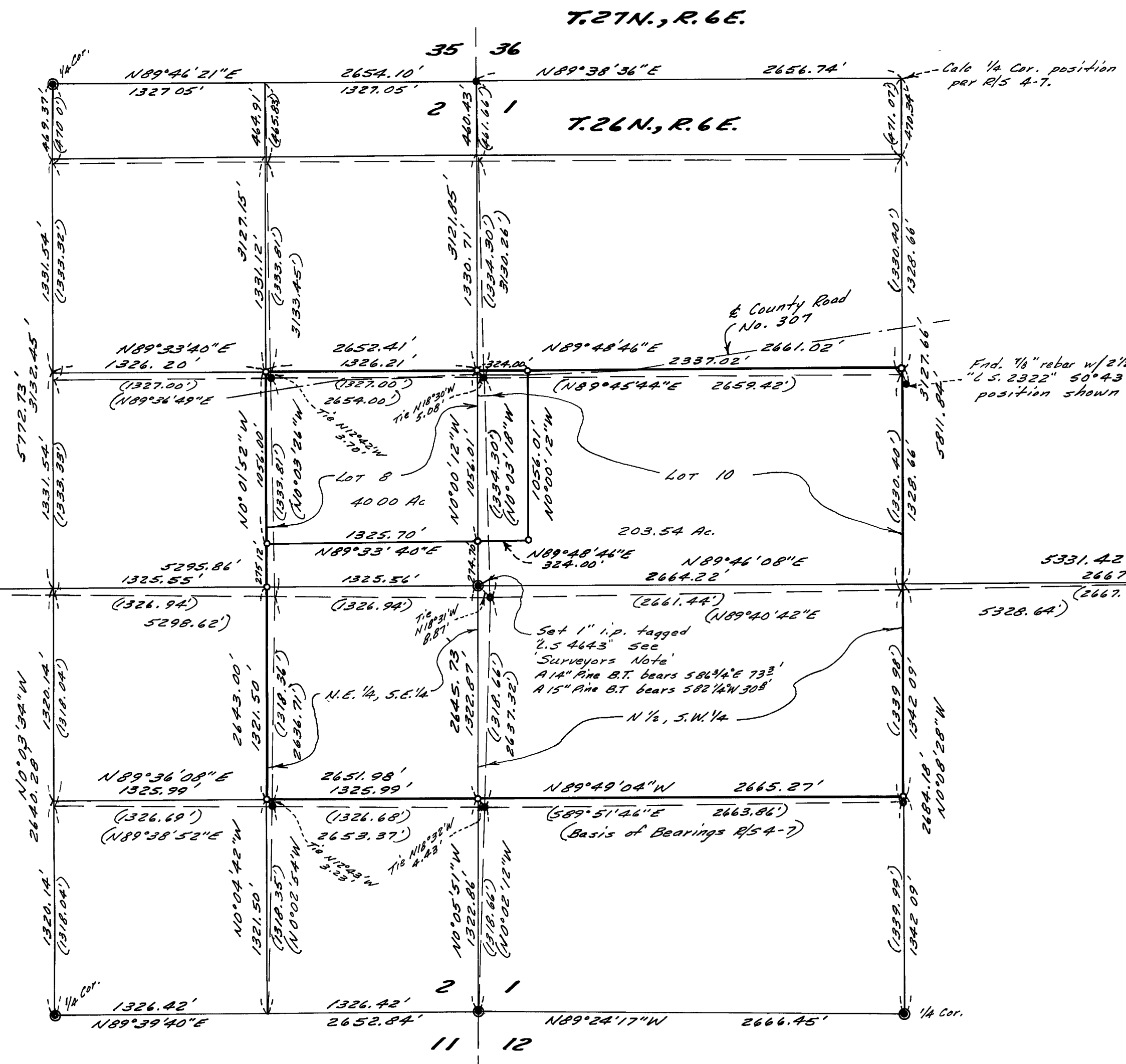


VICINITY MAP
Scale: 1" = 1 Mi.



- LEGEND**
- Found 1975 B.L.M. Brass Cap except as noted.
 - Found 5/8" rebar w/2 1/2" Brass Cap stamped "L.S. 2322" per R/S 4-7.
 - Set 3/4" iron pipe tagged "L.S. 4643".
 - () Indicates Record information per R/S 4-7.
 - or — Indicates new subdivision section lines resulting from this survey.
 - Indicates subdivisional section lines per R/S 4-7.

County Surveyor Note
The U.S. Department of Interior, Bureau of Land Management has made a thorough investigation as to the correct position of the 1/4 corner between section 1 and 2, T26N, R6E, M.D.B.&M. The result of their investigation is that the mound of rocks with a 5/8" steel rod with a 2 1/2" cap marked L.S. 2322 is the correct corner location. The B.L.M. monument was moved to this location. This survey is based upon a different position for this 1/4 Section Corner.

SURVEYOR'S NOTE:
On May 12, 1982 I found a 1975 B.L.M. Brass Cap and the original G.L.O. bearing tree at record bearing and distance (568°W 156 lks); accepted same.
A 5/8" rebar with a 2 1/2" Brass Cap stamped "L.S. 2322" bears 518°31'E 8.87' (Ref. R/S 4-7). This position was not accepted due to the lack of supportive evidence. Subsequently, on November 22, 1982 the B.L.M. relocated the 1975 Brass Cap to the R/S 4-7 position, which bears N73°E 156 lks from the bearing tree.
As B.L.M. found no new evidence to support relocation, and as no original monument was found. The corner must be reestablished based on the record bearing tree tie. Thusly I accepted the 1975 B.L.M. Brass Cap position and remonumented same.

SURVEYOR'S CERTIFICATE:
This map correctly represents a survey made by me in conformance with the requirements of the Land Surveyor's Act at the request of Franklin Paul Lemm, et al., May, 1982.

Stephen H. Schmidt
Stephen H. Schmidt, L.S. 4643
STATE OF CALIFORNIA
No 4643

COUNTY SURVEYOR'S CERTIFICATE:
This map has been examined for conformance with the requirements of the Land Surveyor's Act this 3 day of May, 1984.

Lawrence J. Brock
Lawrence J. Brock, Plumas Co. Surveyor, R.C.E. 13528

COUNTY RECORDER'S CERTIFICATE:
Filed this 3 day of May, 1984 at 11:35 A.M. in Book 6 of Record of Surveys at page 117, at the request of the County Engineer.
Fee: \$ 5.00 File No. 8067
Ila Diggs, Plumas County Recorder

by: *Steve Cammack*
Deputy

RECORD OF SURVEY FOR
FRANKLIN PAUL LEMM, et al.
IN SECTIONS 1 & 2, T.26N., R.6E., M.D.B. & M.
PLUMAS COUNTY, CALIFORNIA
SCALE: 1" = 600'

NST Engineering Associates, Inc.
45 South Roop Street
Susanville, California
916-257-5173

