

RECORD OF SURVEY

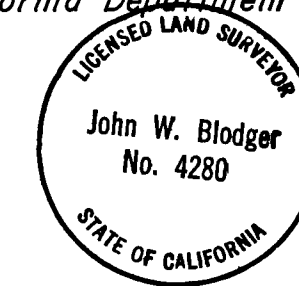
OF
PLUMAS EUREKA STATE PARK BOUNDARY
 ALONG THE SOUTH HALF OF THE WEST LINE OF
 SECTION 7, T.22 N., R.12 E., M. D. M.

PLUMAS COUNTY
 SEPTEMBER 1983

CALIFORNIA
 SCALE: 1" = 200'

SURVEYOR'S CERTIFICATE

This map correctly represents a survey made by me or under my direction in conformance with the Land Surveyor's Act at the request of the California Department of Parks & Recreation in September 1983



John W. Blodger
 JOHN W. BLODGER, L S 4280

COUNTY SURVEYOR'S CERTIFICATE

This map has been examined for conformance with the requirements of the Land Surveyor's Act this 30th day of April, 1984.

Lawrence J. Brock
 COUNTY SURVEYOR
 LAWRENCE J. BROCK R.C.E. 13528

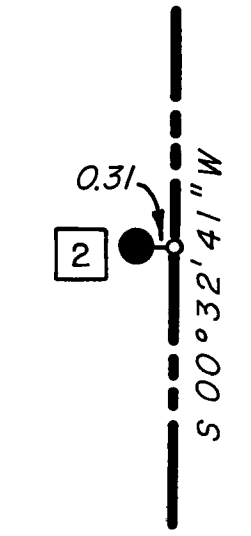
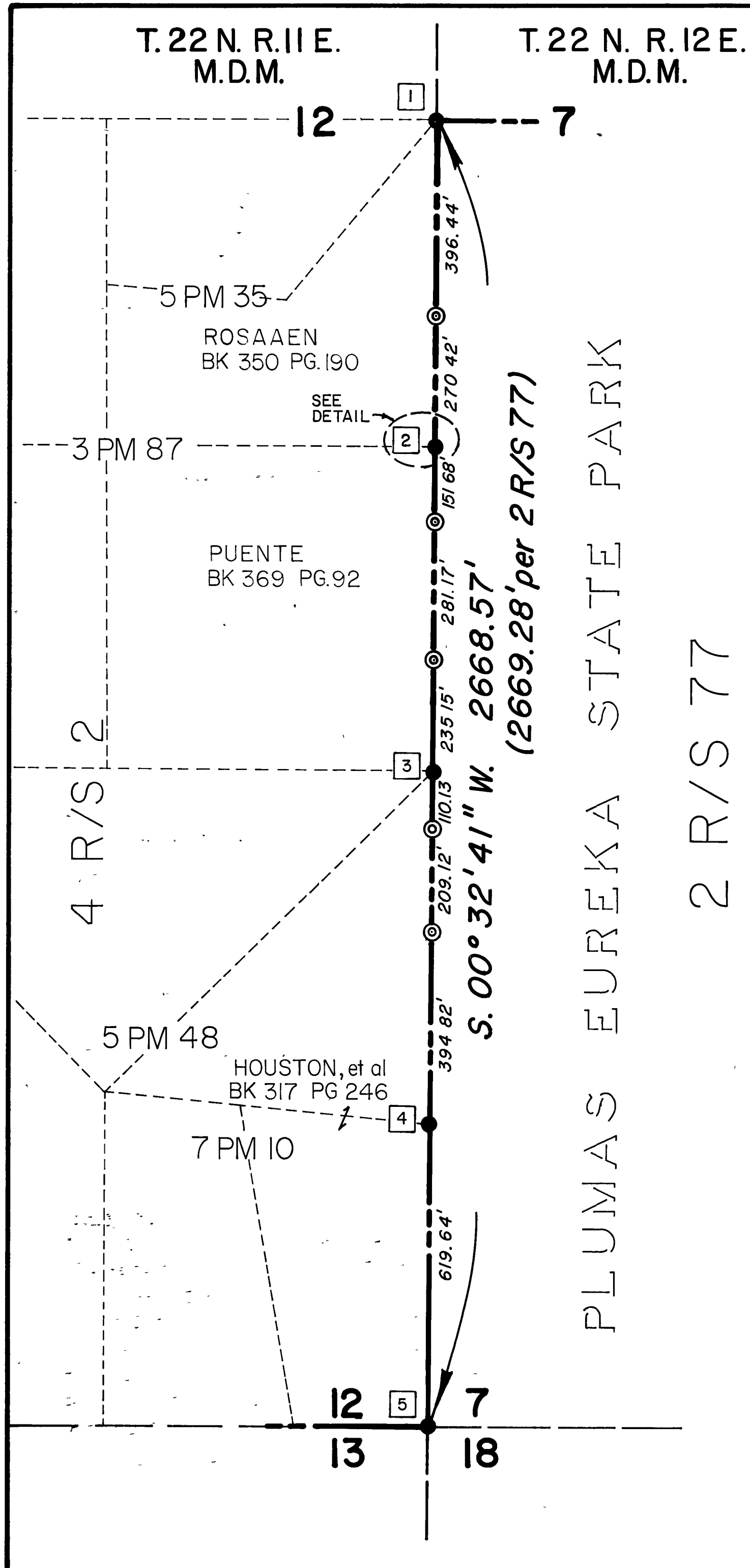
COUNTY RECORDER'S CERTIFICATE

Filed this 7 day of May, 1984 at 10:20 am in Book 6 of RECORD OF SURVEYS at page 118 at the request of the County Engineer

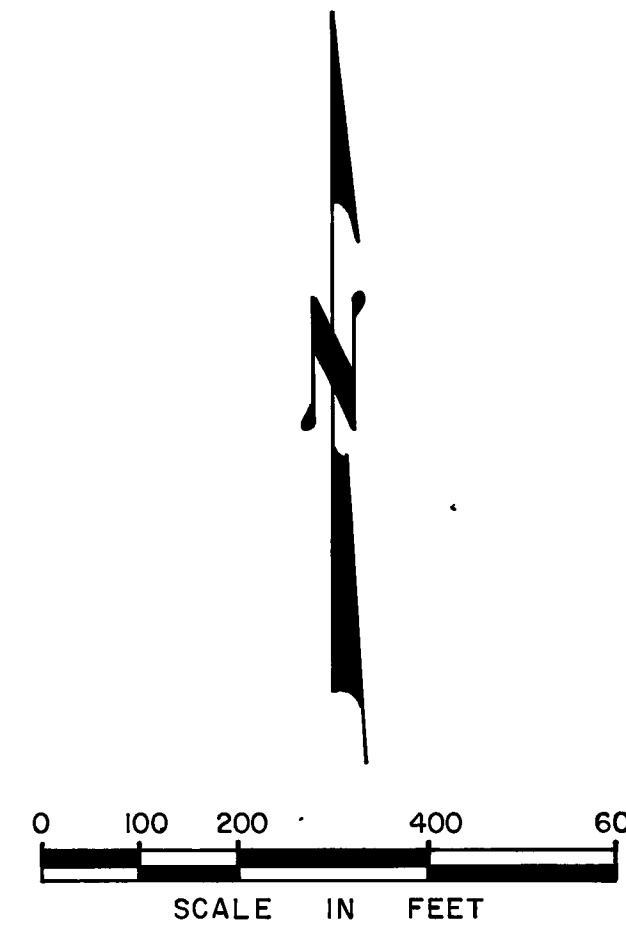
FEE \$5.00
 FILE NO 8122

COUNTY RECORDER
 ILA DIGGS

BY: *Beth Parman*
 DEPUTY



DETAIL
 GRAPHIC SCALE



BASIS OF BEARINGS

Bearings are based on the line between the West 1/4 corner and the Southwest corner of Section 7 as shown on map recorded in Vol 2 RECORD OF SURVEYS Page 77. Said bearing being S 0° 32' 41\" W

LEGEND

- STATE PARK BOUNDARY
- 2 INDEX NUMBER TO DESCRIPTION.
- FOUND MONUMENT AS DESCRIBED
- ⊙ SET 2-3/8" O D ALUMINUM PIPE, 30" LONG WITH STANDARD 3-1/4" ALUMINUM CAP STAMPED "LINE MON, LS 4280, 1983."

- 1 FOUND 3/4" IRON PIPE WITH STD BEACHES & PARKS BRASS CAP STAMPED: "1/4 S12 S7, LS 2781, 1960" PER 2 R/S 77. ALL BEARING TREES DESCRIBED IN 2 R/S 77 FOUND AS FOLLOWS: 36" SPRUCE, NOW A 36" DEAD SNAG, N. 55° E. 18.5 FT.; 50" STUMP, NOW BADLY DECAYED, S. 36° 15' W, 14.5 FT.; 20" CEDAR, NOW A 24" CEDAR, N 21° 30' W, 36.6 FT.; 16" SUGAR PINE, NOW A 22" SUGAR PINE AT TOP OF BREAK, S 61° E, 27.0 FT.
- 2 FOUND 1/2" IRON PIPE WITH TAG LS 3297 PER 3 PM 87. STEEL FENCE POST 0.4 W'LY.
- 3 FOUND 3/4" IRON PIPE WITH TAG LS 3297 PER 4 R/S 2. STEEL FENCE POST SE'LY.
- 4 FOUND 1/2" REBAR WITH PLASTIC CAP LS 3297 PER 7 PM 10.
- 5 FOUND 3/4" IRON PIPE WITH STD BEACHES & PARKS BRASS CAP STAMPED: "S 12 S7 S13 S18, T 22 N, R 11 E, R 12 E LS 2781, 1960" PER 2 R/S 77. ALL BEARING TREES ESTABLISHED & DESCRIBED IN 2 R/S 77 FOUND AS FOLLOWS 22" SUGAR PINE, NOW A 24" SUGAR PINE, N 18° W, 4.5 FT.; 14" FIR, NOW A 19" FIR, S 85° W, 16.1 FT.; 12" PITCH PINE, NOW A 15" PITCH PINE, S 10° E., 18.9 FT.; 12" PINE, NOW A 15" PINE, N. 84° E, 18.5 FT.