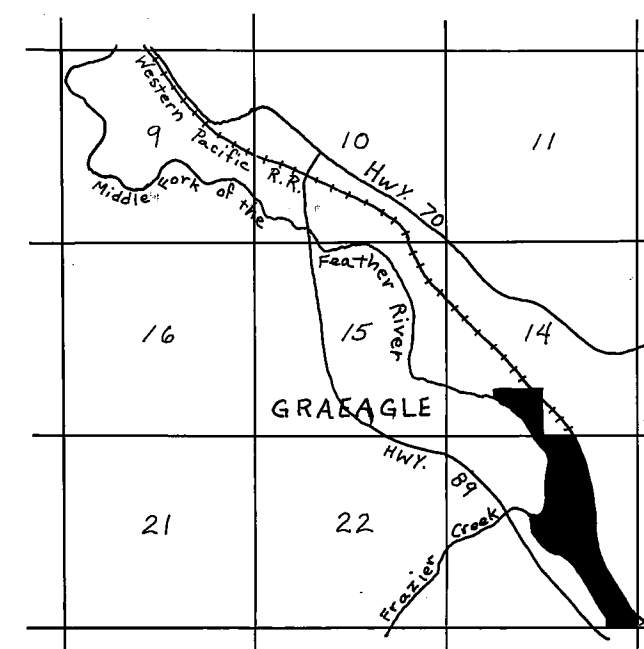
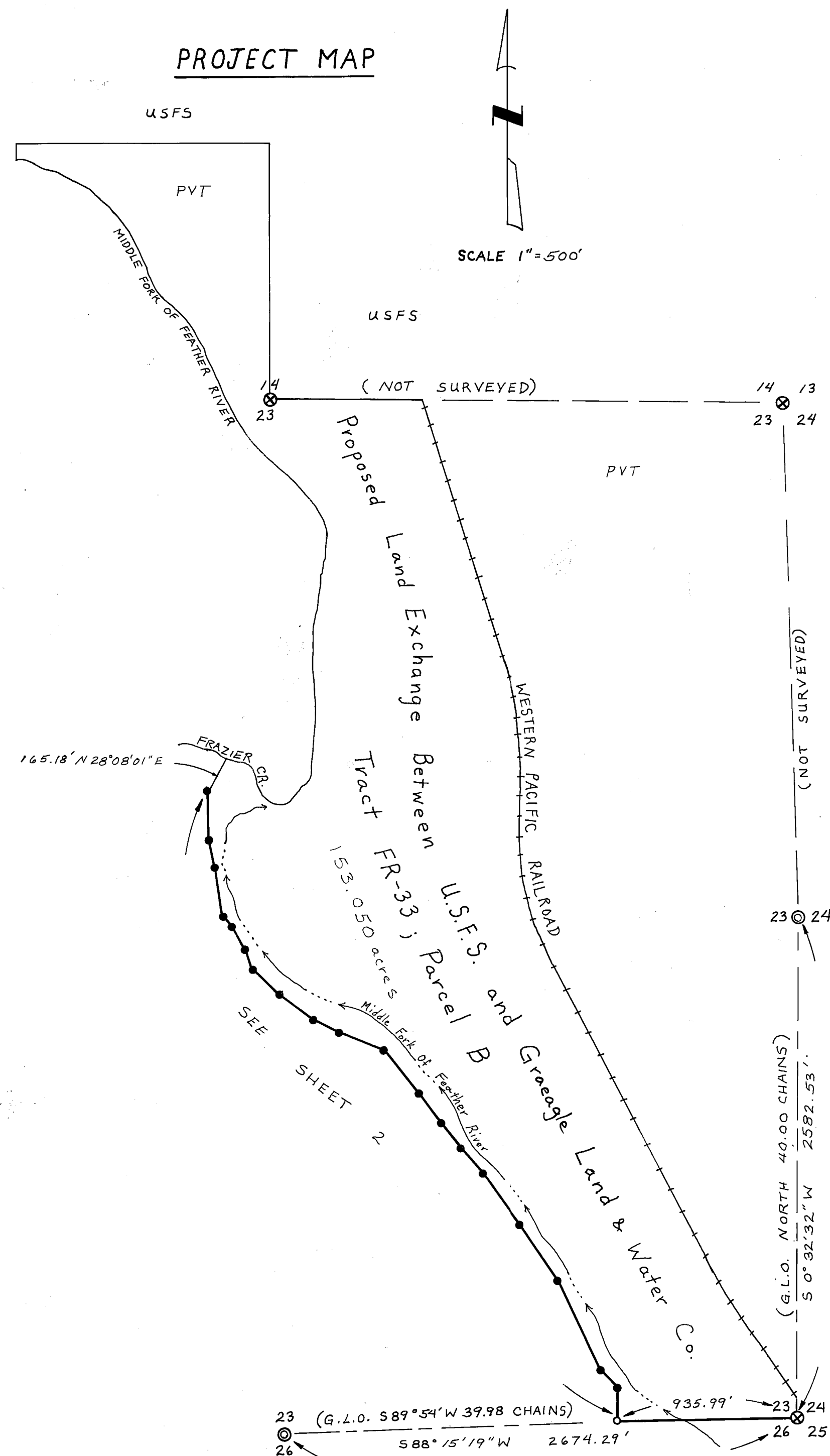


## PROJECT MAP



T22N R12E  
Scale 1" = 1 mile  
VICINITY MAP

## BASIS OF BEARING

The Basis of Bearing is True North as determined by Solar Observation on May 5, 1982 near the Section Corner for Sections 23, 24, 25, & 26, T22N R12E, MDM.

Latitude: 39° 44' 23"  
Longitude: 120° 35' 13"

## LEGEND

- ⊗ Record L.S. or R.C.E. Monument
- ⊙ Set: Std. U.S.F.S. 2 1/2" x 30" Aluminum Monument w/ 3/4" Aluminum Cap
- Set: 5/8" Aluminum Rod w/ 3/4" Aluminum Cap
- Property Line Surveyed
- Calculated Position
- PVT Privately Owned Lands
- USFS Lands of The United States Government Administered by the U.S. Forest Service

## SURVEYOR'S CERTIFICATE

THIS MAP CORRECTLY REPRESENTS A SURVEY MADE BY ME OR UNDER MY DIRECTION IN CONFORMANCE WITH THE REQUIREMENTS OF THE LAND SURVEYOR'S ACT AT THE REQUEST OF The United States Forest Service IN May & June 1982.

*Michael August*  
MICHAEL AUGUST R.C.E. 32780  
STATE OF CALIFORNIA

## COUNTY SURVEYOR'S CERTIFICATE

THIS MAP HAS BEEN EXAMINED FOR CONFORMANCE WITH THE REQUIREMENTS OF THE LAND SURVEYOR'S ACT THIS 6 DAY OF June 1984.

*Lawrence Brock*  
COUNTY SURVEYOR  
LAWRENCE BROCK R.C.E. 13528

## RECORDER'S CERTIFICATE

FILED THIS 6 DAY OF June, 1984,  
AT 2:10 P.M. IN BOOK 6 OF Record of Surveys  
AT PAGE 121, 122, 123 AT THE REQUEST OF THE  
COUNTY ENGINEER.

FEE: \$ 9.00

FILE NO. \_\_\_\_\_

ILA DIGGS

COUNTY RECORDER

BY *Patricia Lacey*  
DEPUTY

## RECORD OF SURVEY

IN SECTION 23, T 22N, R12E, M.D.M.

IN THE UNINCORPORATED AREA OF PLUMAS COUNTY  
CALIFORNIA, FOR THE U.S. FOREST SERVICE

JULY 1982

MICHAEL AUGUST

R.C.E. 32780

SHEET 1 OF 3