

VICINITY MAP



SCALE: 1" = 200'

BASIS OF BEARING

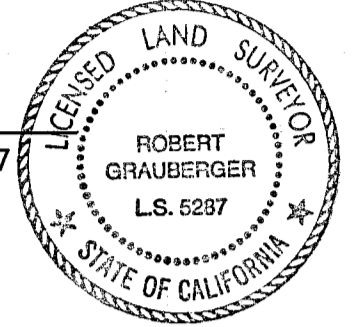
THE BASIS OF BEARING IS TRUE NORTH AS DETERMINED BY SOLAR OBSERVATION ON AUGUST 9, 1983 NEAR CORNER NO. 5 OF THE VICTOR Q. M. SHOWN ON SHEET 2 OF 4.

LATITUDE: 39° 54' 55"
LONGITUDE: 121° 06' 04"

SURVEYOR'S CERTIFICATE

This map correctly represents a survey made by me or under my direction in conformance with the requirements of the Land Surveyor's Act at the request of The United States Forest Service in October, 1983.

Robert Grauberger
Robert Grauberger L.S. 5287



COUNTY SURVEYOR'S CERTIFICATE

This map has been examined for conformance with the requirements of the Land Surveyor's Act this 4th day of June, 1984.

Lawrence J. Brock R.C.E. 13528
Plumas County Surveyor

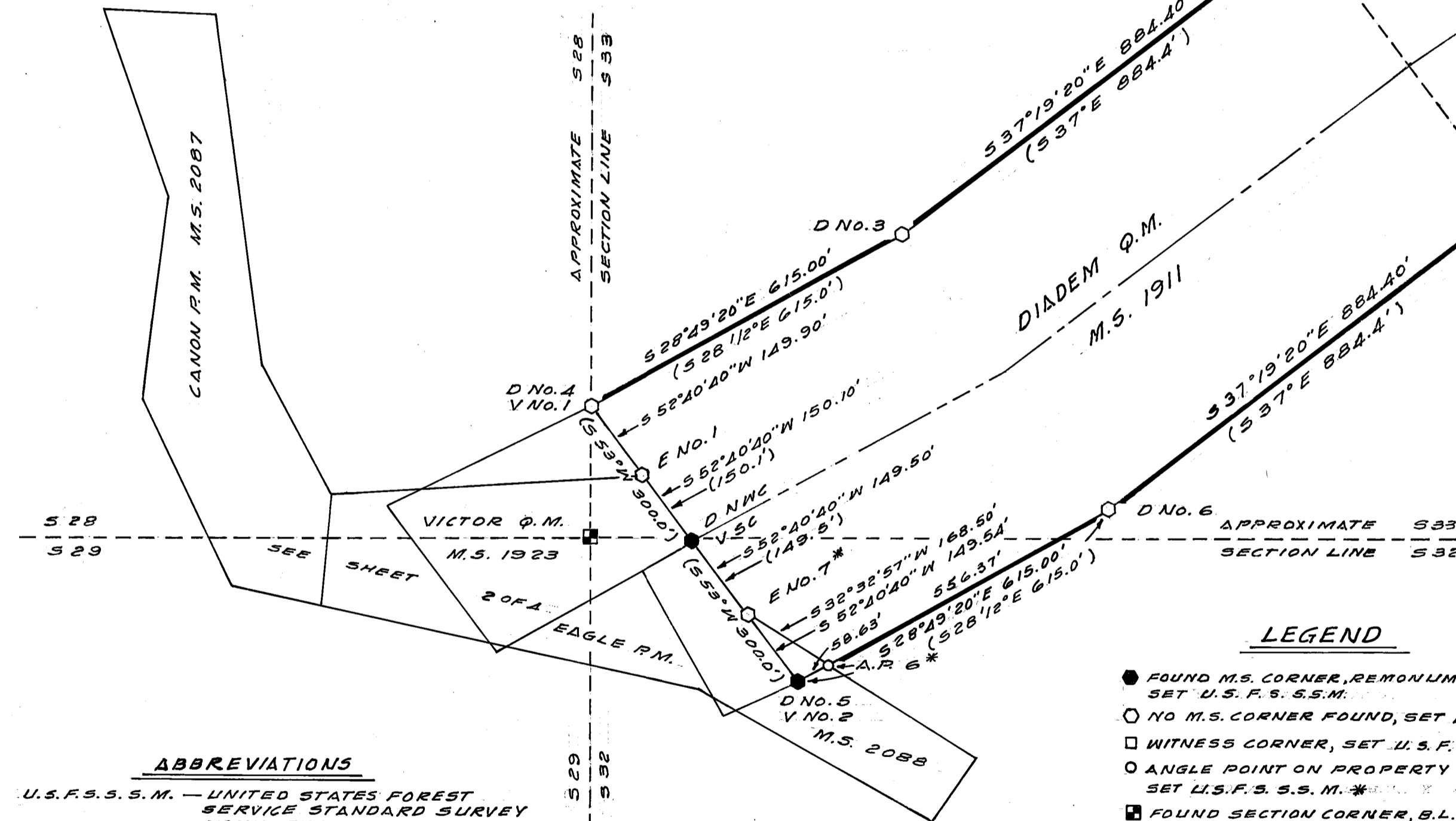
COUNTY RECORDER'S CERTIFICATE

Filed this 6th day of June, 1984 at 1:10 P.M. in Book 4 of Record of Surveys, at page 124-127, at the request of the County Engineer.

Ila Diggs
County Recorder

Fee \$11.00
File No. 8929

By Bob Ammack
Deputy



LEGEND

- FOUND M.S. CORNER, REMONUMENTED, SET U.S.F.S. S.S.M.
- NO M.S. CORNER FOUND, SET U.S.F.S. S.S.M. *
- WITNESS CORNER, SET U.S.F.S. S.S.M.
- ANGLE POINT ON PROPERTY BOUNDARY SET U.S.F.S. S.S.M. *
- FOUND SECTION CORNER, B.L.M. BRASS CAP MONUMENT SET IN 1970.
- U.S. GOVERNMENT BOUNDARY MARKED AND POSTED.
- () RECORD DIMENSIONS, U.S. MINERAL SURVEY BY A.W. KEDDIE IN 1882.

* EXCEPT AS NOTED

ABBREVIATIONS

- U.S.F.S. S.S.M. — UNITED STATES FOREST SERVICE STANDARD SURVEY MONUMENT.
- F.W.B. — FROM WHICH BEARS.
- REC. — RECORD
- M.O.S. — MOUND OF STONE
- W.C. — WITNESS CORNER
- A.P. — ANGLE POINT
- MKD. — MARKED

RECORD OF SURVEY

FOR
THE UNITED STATES FOREST SERVICE
THE RETRACEMENT AND REMONUMENTATION OF MINERAL SURVEYS 1910, 1911, 1923, 2087 AND 2088 SITUATED IN SECTIONS 28, 29, 32 AND 33, T. 21 N., R. 8 E., M.D.M., IN THE UNINCORPORATED AREA OF PLUMAS COUNTY, CALIFORNIA.

ROBERT GRAUBERGER
L.S. 5287

OCTOBER 1983
SHEET 1 OF 4