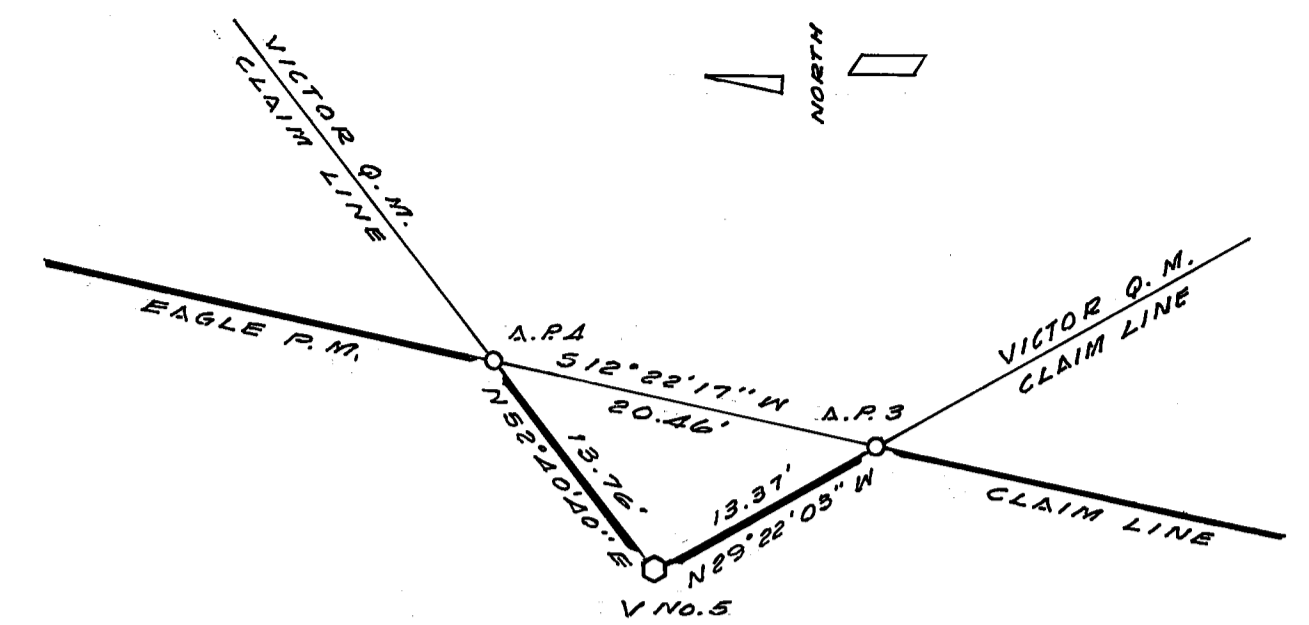
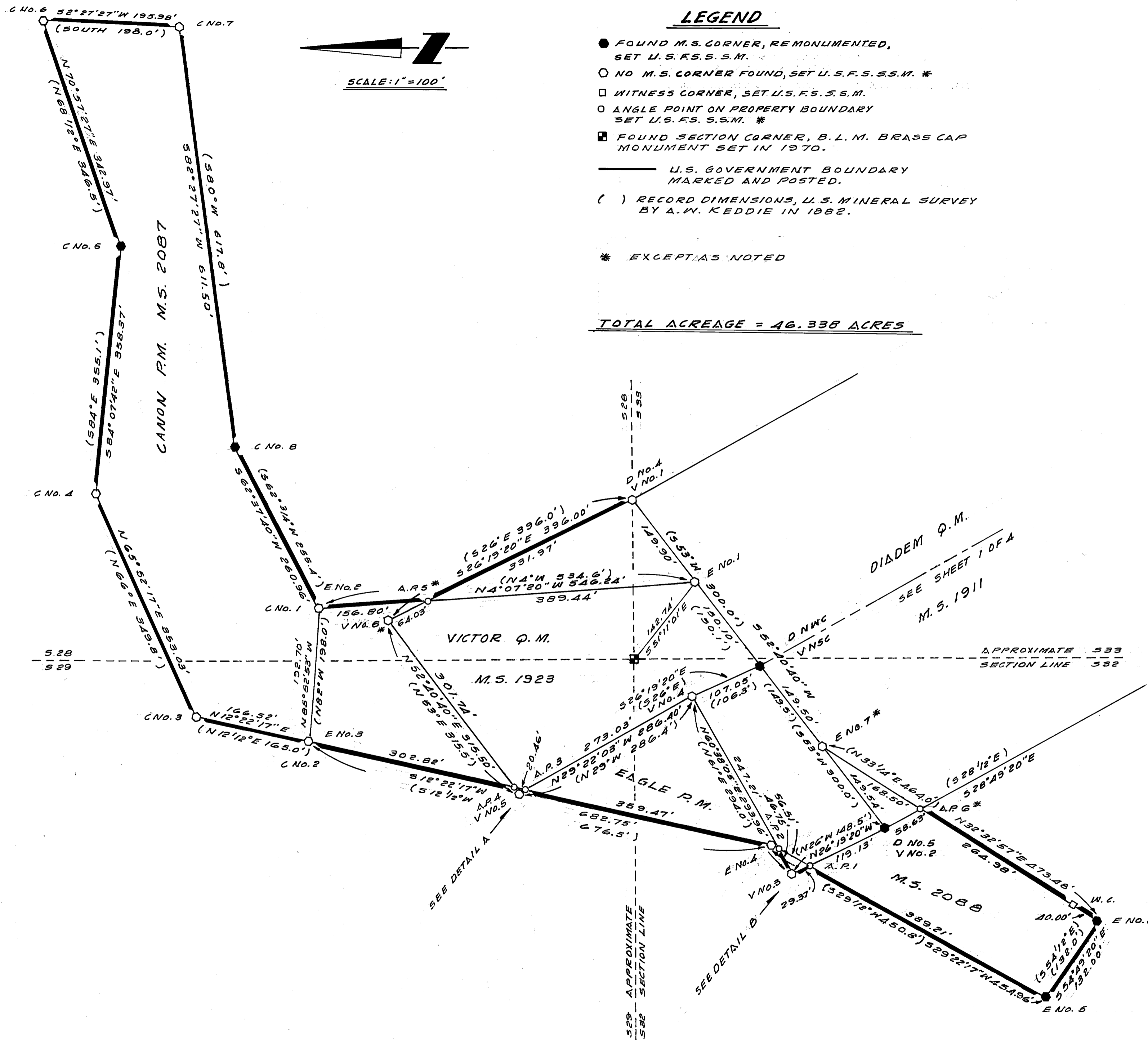
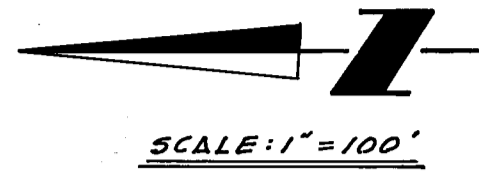


**LEGEND**

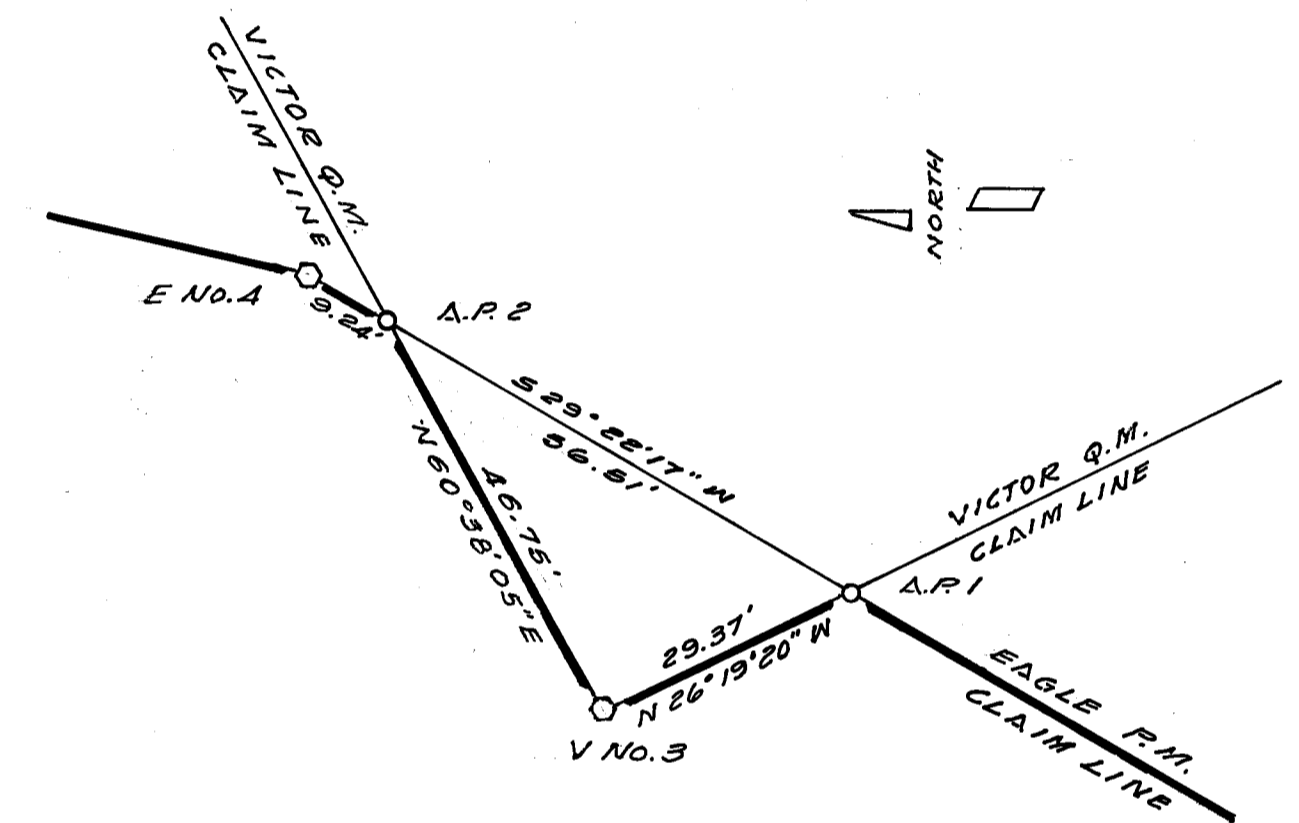
- FOUND M.S. CORNER, REMONUMENTED, SET U.S.F.S.S.M.
  - NO M.S. CORNER FOUND, SET U.S.F.S.S.M. \*
  - WITNESS CORNER, SET U.S.F.S.S.M.
  - ANGLE POINT ON PROPERTY BOUNDARY SET U.S.F.S.S.M. \*
  - FOUND SECTION CORNER, B.L.M. BRASS CAP MONUMENT SET IN 1970.
- U.S. GOVERNMENT BOUNDARY MARKED AND POSTED.
- ( ) RECORD DIMENSIONS, U.S. MINERAL SURVEY BY A.W. KEDDIE IN 1882.

\* EXCEPT AS NOTED

**TOTAL ACREAGE = 46.338 ACRES**



**DETAIL A**  
SCALE: 1"=10'



**DETAIL B**  
SCALE: 1"=20'

**RECORD OF SURVEY**

FOR  
 THE UNITED STATES FOREST SERVICE  
 THE RETRACEMENT AND REMONUMENTATION OF MINERAL SURVEYS 1910, 1911, 1923, 2087 AND 2088 SITUATED IN SECTIONS 28, 29, 32 AND 33, T.24N., R.8E., M.D.M., IN THE UNINCORPORATED AREA OF PLUMAS COUNTY, CALIFORNIA.

ROBERT GRAUBERGER  
 L.S. 5287

OCTOBER 1983  
 SHEET 2 OF 4