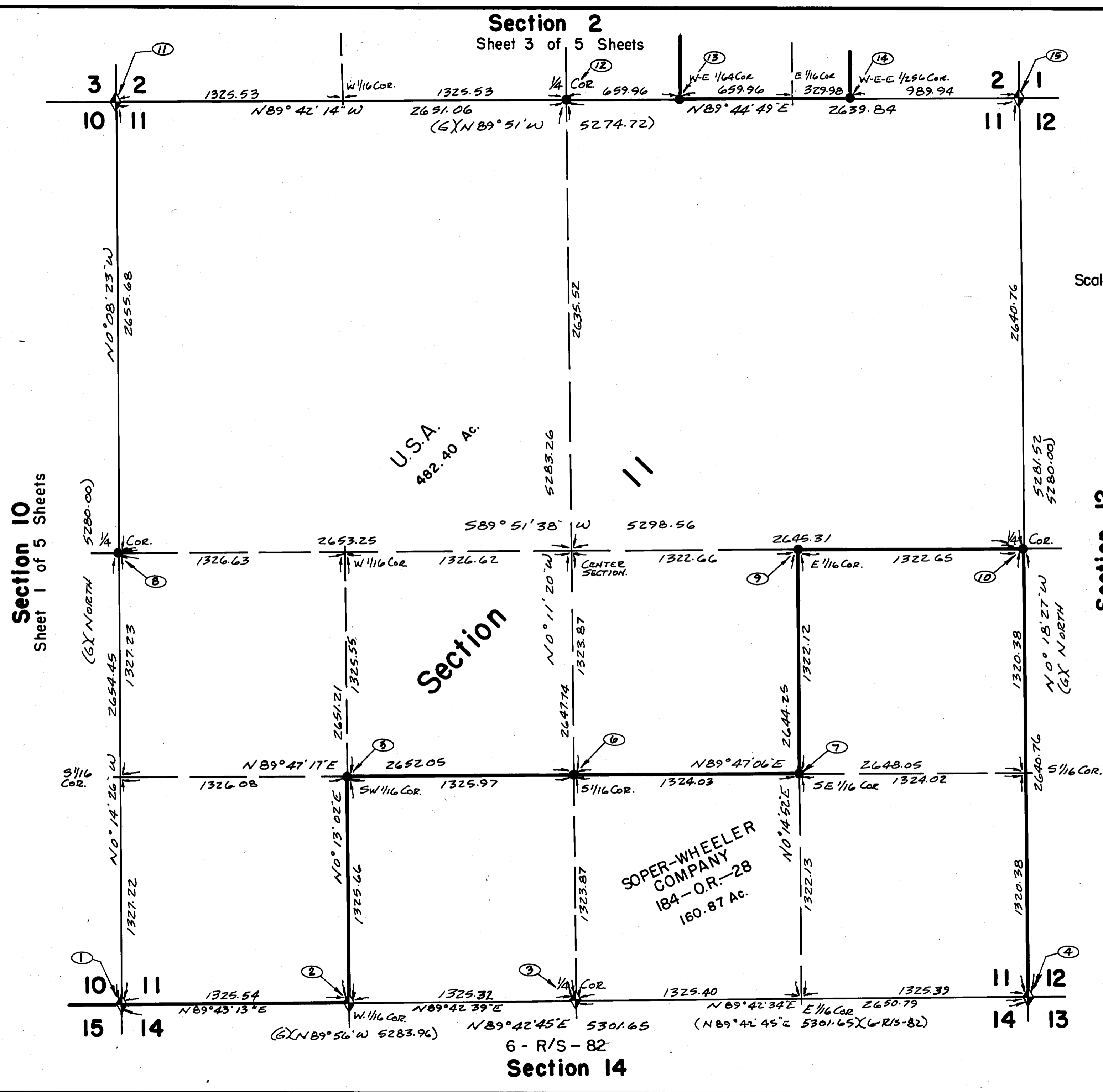
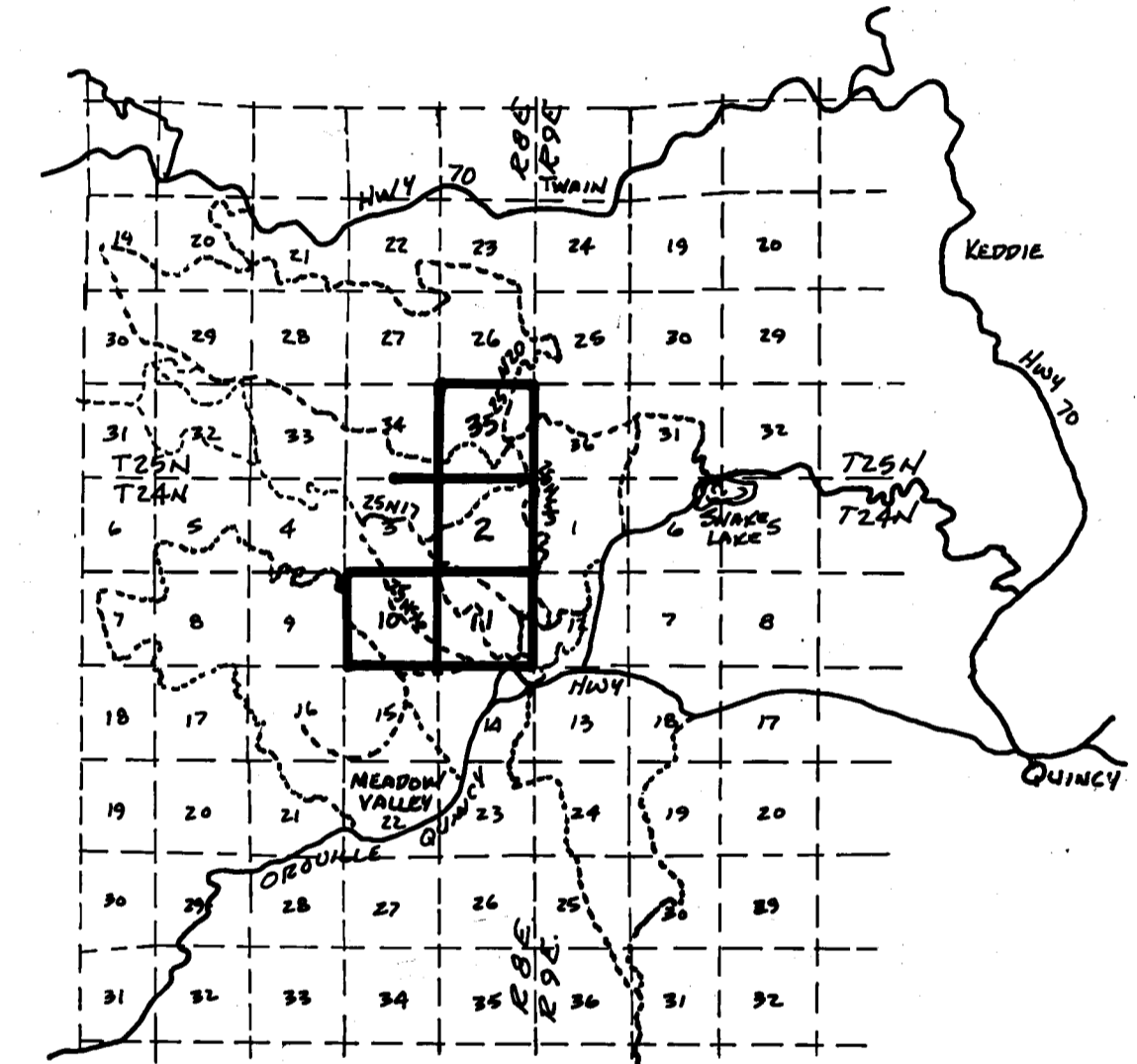
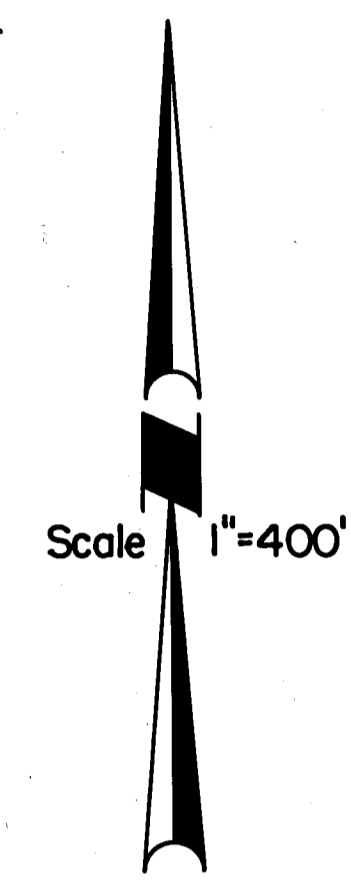


Section 2
Sheet 3 of 5 Sheets



NOTES:

- ◆ DENOTES FOUND BLM OR USFS MONUMENT AS DESCRIBED IN CORNER NOTES.
 - DENOTES SET A STD USFS MONUMENT IN A STONE MOUND SEE SHEET 516 FOR DESCRIPTION.
 - + DENOTES A COMPUTED POINT NOTHING SET OR FOUND.
 - ① DENOTES CORNER DESCRIPTION NUMBER SEE SHEET 516 FOR DESCRIPTION.
 - DENOTES NATIONAL FOREST BOUNDARY LINE.
 - (G) DENOTES DATA AS PER GOVT NOTES.
 - () DENOTES RECORD DATA AS SHOWN.
- SEE SHEET 5 FOR ADDITIONAL NOTES.



RECORD OF SURVEY
FOR
UNITED STATES FOREST SERVICE

Being Sections 2, 10 and 11 - T. 24 N. - R. 8 E. and
Section 35 - T. 25 N. - R. 8 E. - M.D.B.
Plumas National Forest Plumas Co., CA
August, 1984



LIPPINCOTT-GUTH ASSOCIATES
ENGINEERS SURVEYORS PLANNERS
1007 BILLE ROAD PARADISE, CALIFORNIA 95969-0671
(916) 877-8877 877-4300