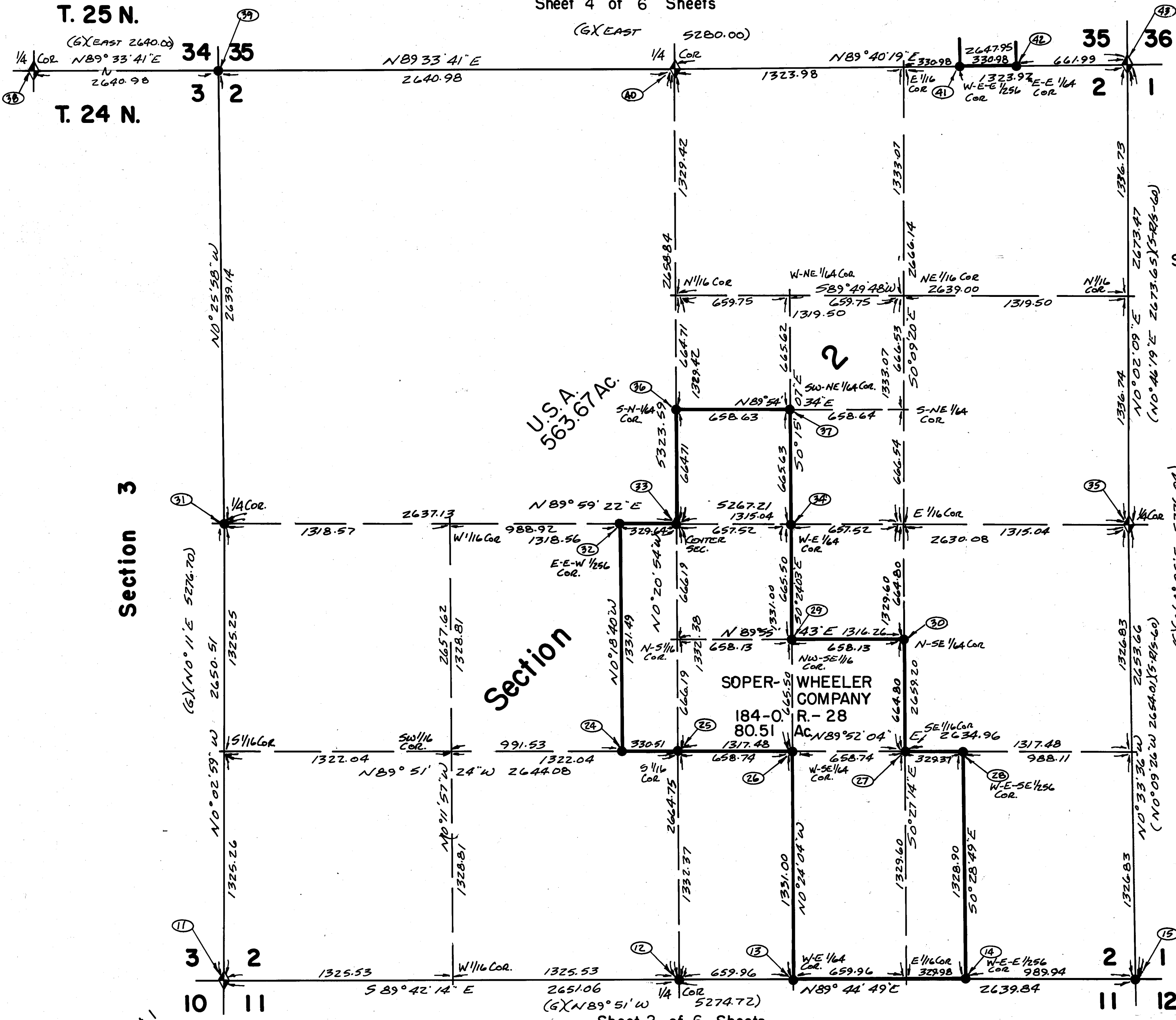


Section 35
Sheet 4 of 6 Sheets

T. 25 N.

T. 24 N.



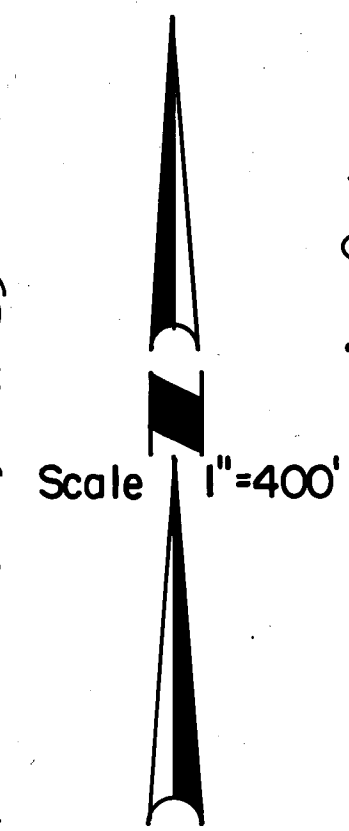
NOTES:

BASIS OF BEARINGS - SOUTH LINE OF SECTION 11 N 89° 42' 45" E AS PER G-RIS-82.

DISTANCES SHOWN HEREON ARE IN FEET AND DECIMAL PARTS THEREOF.

- ◆ DENOTES FOUND BLM. OR USFS MONUMENT AS DESCRIBED IN CORNER DESCRIPTIONS.
- DENOTES SET A STD. USFS MONUMENT IN A STONE MOUND SEE SHEET 516 FOR DESCRIPTION OF CORNERS.
- + DENOTES A COMPUTED POINT NOTHING SET OR FOUND.
- ① DENOTES CORNER DESCRIPTION NUMBER SEE SHEET 516 FOR CORNER DESCRIPTIONS.
- NATIONAL FOREST BOUNDARY
- (G) DATA AS PER GOV'T NOTES.
- (-) DENOTES RECORD DATA AS SHOWN.

SEE SHEET 5 FOR ADDITIONAL NOTES.



Section 3

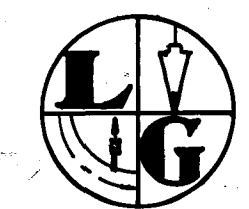
Section 1
5-R/S-60

Sheet 1 of 6 Sheets

Sheet 2 of 6 Sheets
Section 11

RECORD OF SURVEY
FOR
UNITED STATES FOREST SERVICE

Being Sections 2, 10 and 11 - T. 24 N. - R. 8 E. and
Section 35 - T. 25 N. - R. 8 E. - M.D.B.
Plumas National Forest August, 1984
Plumas Co., CA



LIPPINCOTT-GUTH ASSOCIATES
ENGINEERS SURVEYORS PLANNERS
1007 BILLE ROAD PARADISE, CALIFORNIA 95969-0671
(916) 877-8877 877-4300

Section 2 Sheet 3 of 6 Sheets