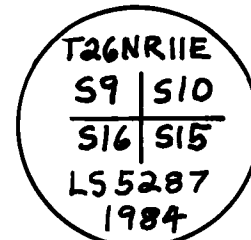


BASIS OF BEARINGS: SOLAR OBSERVATION

9/10/84 NEAR CORNER $\frac{S9}{S16} | \frac{S10}{S15}$

LATITUDE: 40°06'12.36" LONGITUDE: 120°44'24.0"

CORNER NOTES:



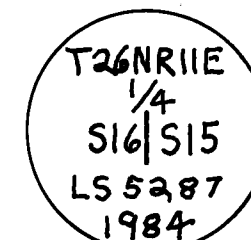
RECORD: SET 18"X14"X6" STONE IN MS FROM WHICH
24" Y. PINE S34 1/4° W 33 LKS
32" Y. PINE N53 1/2° W 59 LKS
22" CEDAR S51 3/4° E 69 LKS
16" CEDAR S20° E 85 LKS

FOUND: EMBEDDED MS FROM WHICH

27" P. PINE S26°32' W 22 1/2 FT, W/SCRIBING VISIBLE
STUMPHOLE N50°17' W 38 1/2 FT W/±36" PINE
SNAG NEARBY, SCRIBING VISIBLE
36" CEDAR STUMP S50°41' E 46 1/2 FT, CUT BELOW BLAZE
22" CEDAR N21°22' E 55 1/2 FT, CLOSED BLAZE
30" P. PINE N77°38' E 18 1/2 FT, CLOSED BLAZE

SET: 2 1/2" AP MARKED AS SHOWN IN CENTER OF ORIGINAL

MS AND REBUILT 36"X40"X14" MS FROM WHICH
11" D. FIR S86 1/2° E 15 1/2 FT MKD T26NRIIES15BT
10" D. FIR N88° W 13 1/2 FT MKD T26NRIIES9BT



RECORD: SET POST IN MS FROM WHICH
18" CEDAR S50° W 50 LKS
16" SPRUCE N48° E 74 LKS

FOUND: 36" CEDAR W/ CLOSED BLAZE;
FIR REMNANT W/SCRIBING ALONG SKID ROAD

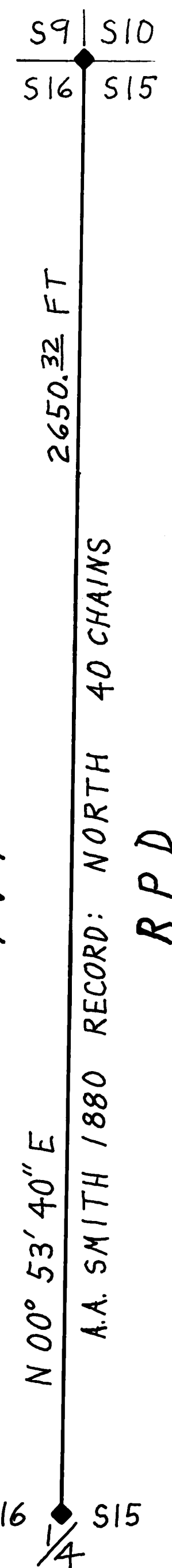
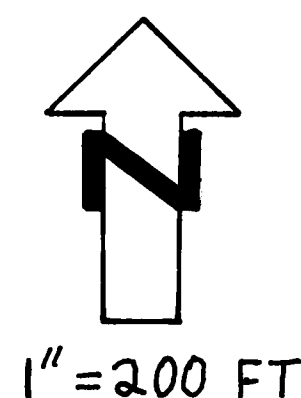
SET: 2 1/2" AP MKD AS SHOWN AT RECORD BEARING AND DISTANCE

FROM RECORD CEDAR BT IN 26"X27"X8" MS
FROM WHICH A 16" WHITE FIR BEARS S42° E 28 1/2 FT
W/ CLOSED BLAZE AND TAG BY SARGENT, LS 2322, 1945

LEGEND:

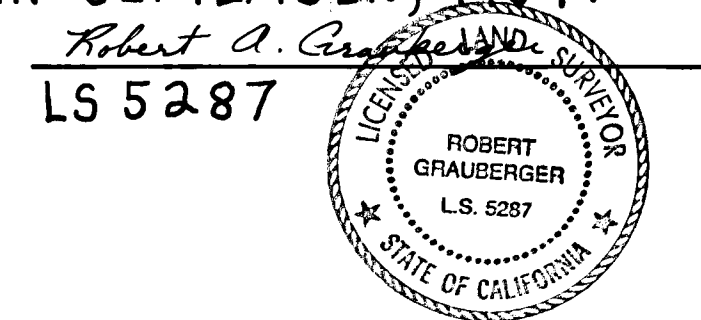
BT	BEARING TREE	PVT	PRIVATELY OWNED LANDS
Y. PINE	YELLOW PINE	RPD	RESERVED PUBLIC DOMAIN
P. PINE	PONDEROSA PINE	MKD	MARKED
D. FIR	DOUGLAS FIR	W/	WITH
		MS	MOUND OF STONE

2 1/2" AP A 2 1/2" DIAMETER, 30" LONG ALUMINUM PIPE W/A MAGNET IN A BASE DESIGNED TO BREAK OFF ON IMPACT, AND W/A 3/2" DIAMETER ALUMINUM CAP W/ FOREST SERVICE LOGO. (BERNSTEN A-1-BR)



SURVEYOR'S CERTIFICATE

THIS MAP CORRECTLY REPRESENTS A SURVEY MADE BY ME OR UNDER MY DIRECTION IN CONFORMANCE WITH THE REQUIREMENTS OF THE LAND SURVEYOR'S ACT AT THE REQUEST OF THE U.S. FOREST SERVICE IN SEPTEMBER, 1984.
ROBERT A. GRAUBERGER



COUNTY SURVEYOR'S CERTIFICATE

THIS MAP HAS BEEN EXAMINED FOR CONFORMANCE WITH THE REQUIREMENTS OF THE LAND SURVEYOR'S ACT THIS 20TH DAY OF November, 1984.
LAWRENCE J. BROCK *Laurence J. Brock*
RCE 13528 COUNTY SURVEYOR

RECORDER'S CERTIFICATE

FILED THIS 20TH DAY OF November, 1984, AT 8:40 A.M. IN BOOK 7 OF RECORDS OF SURVEYS AT PAGE 12, AT THE REQUEST OF THE COUNTY ENGINEER. ILA DIGGS, COUNTY RECORDER, BY *Debra Cammack* DEPUTY
FEE: \$500 FILE NO. 4064

RECORD OF SURVEY

A PORTION OF SECTIONS 15 AND 16, T26NRIIE, M.D.M. IN THE UNINCORPORATED AREA OF PLUMAS COUNTY, CALIFORNIA; FOR THE USDA, FOREST SERVICE. THE BOUNDARY IS MARKED AND POSTED TO FOREST SERVICE SPECIFICATIONS.

SEPTEMBER, 1984
ROBERT A. GRAUBERGER, LS 5287

0000