

**Basis of Bearing**

The Basis of Bearing for this survey is True North as determined by Solar Observation taken near Last Chance Corner #1, MS 6552, T27N, R11E, MDM, on July 9, 1984

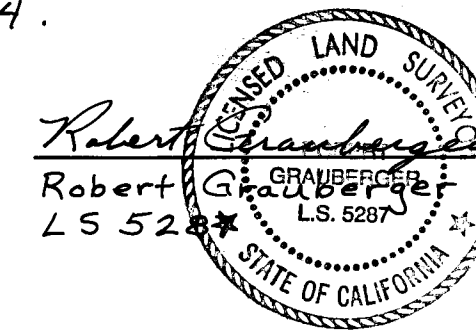
Latitude: 40° 09' 37"  
Longitude: 120° 44' 31"

Scale: 1" = 200'



**SURVEYOR'S CERTIFICATE**

This map correctly represents a survey made by me or under my direction in conformance with the requirements of the Land Surveyor's Act at the request of the United States Forest Service in July, 1984.



**COUNTY SURVEYOR'S CERTIFICATE**

This map has been examined for conformance with the requirements of the Land Surveyor's Act this 4 day of December, 1984.

*Lawrence J. Brock*  
Lawrence J. Brock, RCE 13528  
Plumas County Surveyor

**COUNTY RECORDER'S CERTIFICATE**

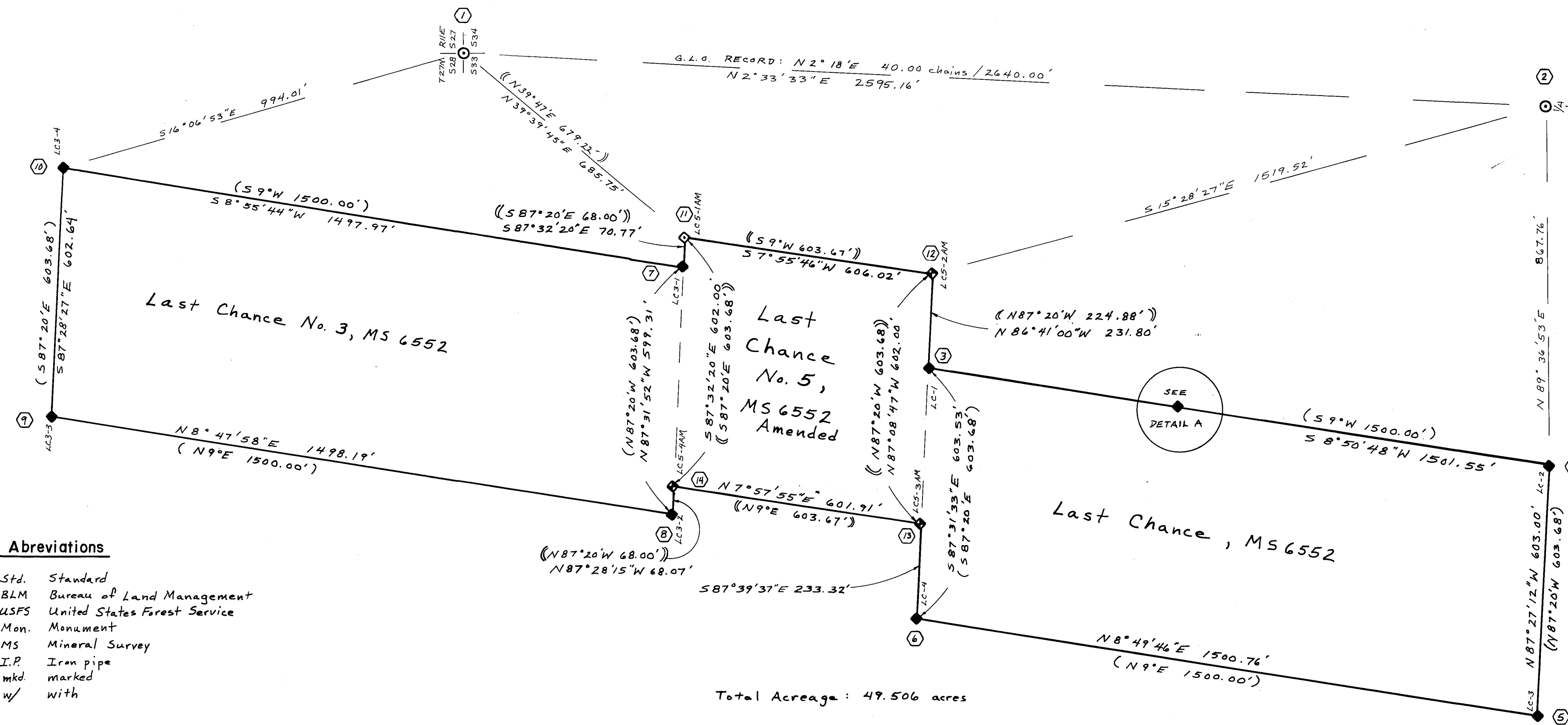
Filed this 4 day of December, 1984 at 10:05 A.M. in Book 7 of Records of Surveys, at page 1546, at the request of the County Engineer.

Fee: \$700 Ila Diags  
County Recorder  
File No.: 4351 by *Richard Rabey*  
Deputy

**RECORD OF SURVEY**

The retracement & remonumentation of Mineral Surveys 6552 & 6552 AM situated in Sections 28 & 33, T27N, R11E, M.D.M., in the unincorporated area of Plumas County, California done at the request of the UNITED STATES FOREST SERVICE

JULY 1984 ROBERT GRAUBERGER  
LS 5287



**Abbreviations**

- Std. Standard
- BLM Bureau of Land Management
- USFS United States Forest Service
- Mon. Monument
- MS Mineral Survey
- I.P. Iron pipe
- mkd. marked
- w/ with

**Legend**

- ◆ Found 2" I.P. w/ tag mkd. as per MS 6552; replaced w/ Std. USFS Mon.\*
- ◆ Found 1 1/4" I.P. w/ steel washer mkd. as per MS 6552 Amended; replaced w/ Std. USFS Mon.\*
- ◇ No Corner Mon. Found; set Std. USFS Mon.\*
- Found Std. BLM Brass Cap Mon.
- Corner Note, see sheet 2 of this Record of Survey
- ( ) Record measurement as per MS 6552
- ( ) Record measurement as per MS 6552 Amended
- USFS property boundary
- \* A Std. USFS Mon. is an AR-1-BR Bernsten aluminum monument consisting of a 2" aluminum pipe, 28" long, w/ a 3/4" aluminum cap; when replaced, I.P. was deposited alongside aluminum monument in mound of stone.

**Detail A**

