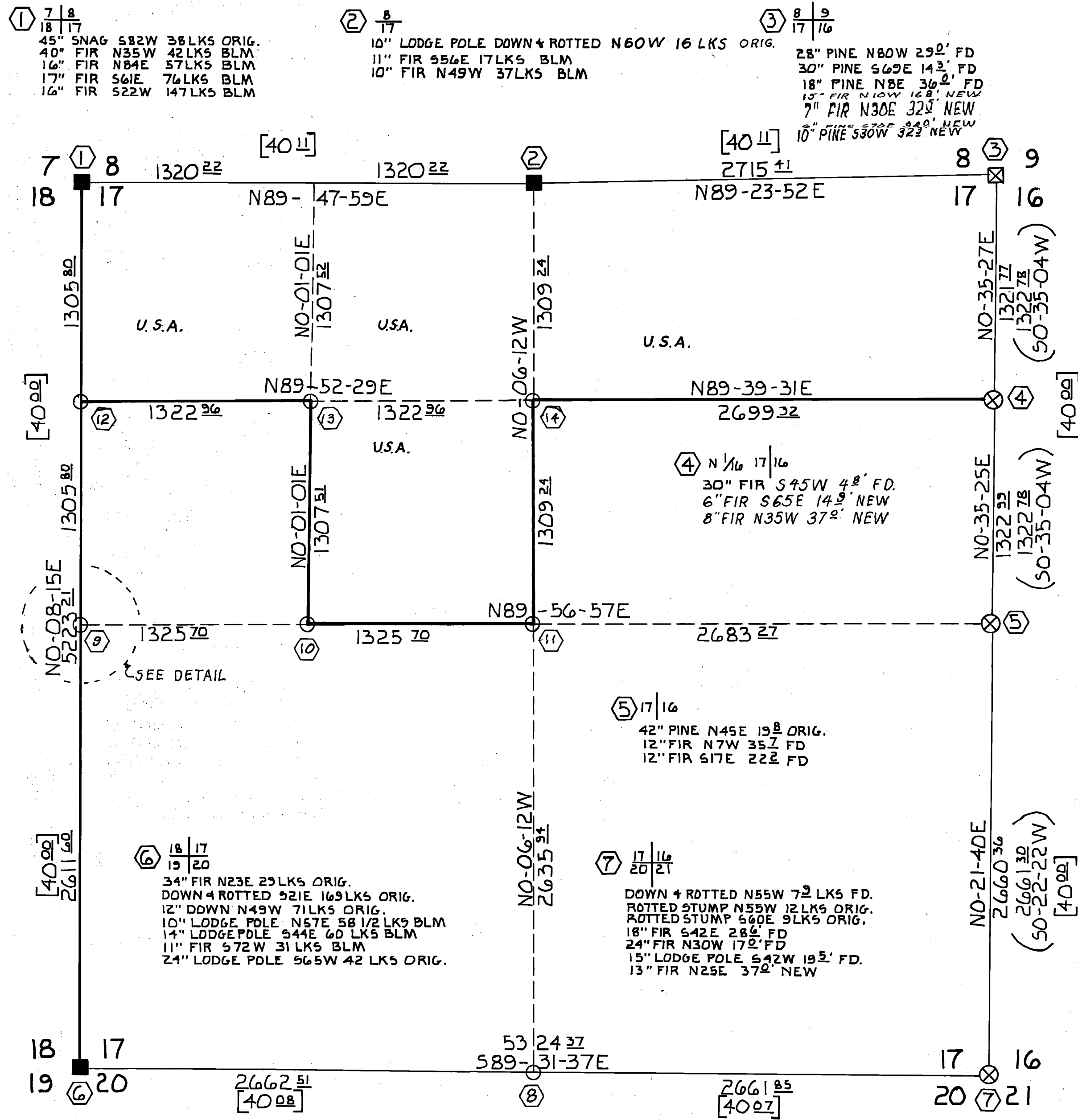
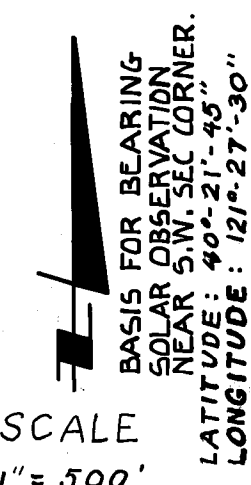


BEARINGS SHOWN ARE FROM MONUMENT TO BEARING TREE

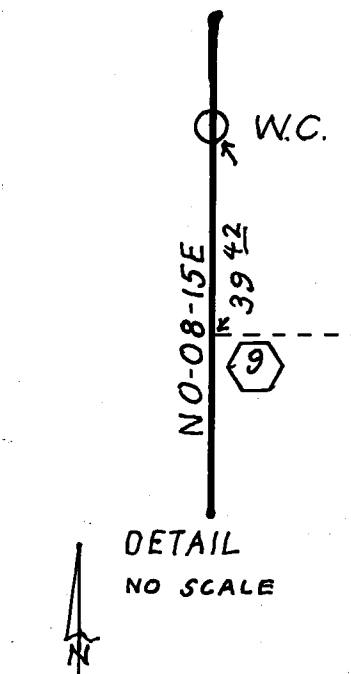


LEGEND

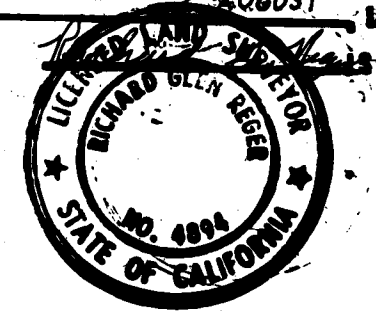
- SET 2 1/2" ALUM. PIPE W/ 3/2" ALUM. CAP USFS MON. IN RM. L54894
- ⊗ FD. 'X' ON 10' SQ. 5' HIGH ROCK SET USFS ALUM. CAP IN ROCK
- FD BLM MON. 2 1/2" PIPE W/ 3/2" BRASS CAP IN RM
- ⊗ FD 3/4" IRON PIPE IN ROCK MOUND L52922 SET USFS ALUM. MON. L54854 IN PLACE OF PIPE
- ( ) PER 2RS 101
- [ ] PER GLO DISTANCE
- LINE MARKED & POSTED PER USFS STANDARDS
- RM = ROCK MOUND
- LKS = LINKS
- FD = FOUND



SCALE 1" = 500'

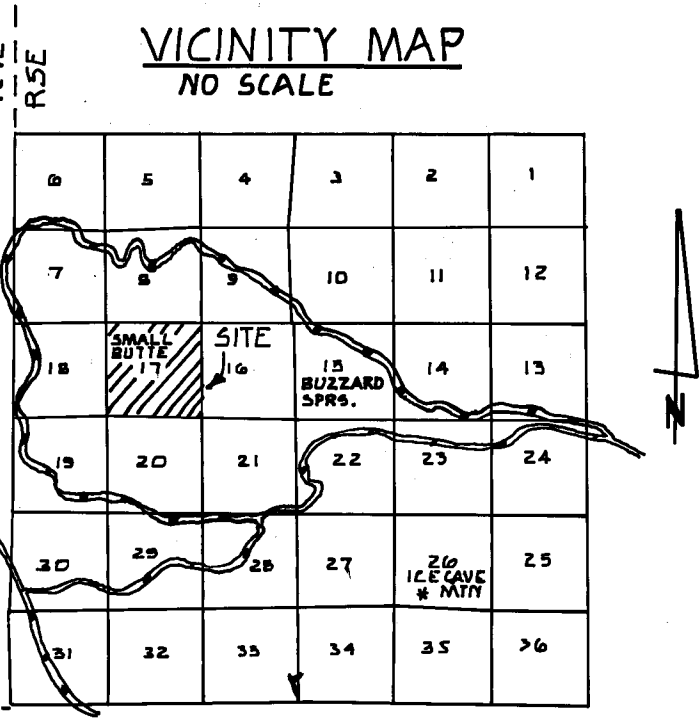


**SURVEYORS CERTIFICATE**  
 THIS MAP CORRECTLY REPRESENTS A SURVEY MADE BY ME OR UNDER MY DIRECTION, IN CONFORMANCE WITH THE REQUIREMENTS OF THE LAND SURVEYORS ACT AT THE REQUEST OF LASSEN NATIONAL FOREST AUGUST 1984



**COUNTY SURVEYORS CERTIFICATE**  
 THIS MAP HAS BEEN EXAMINED FOR CONFORMANCE WITH THE REQUIREMENTS OF THE LAND SURVEYORS ACT THIS 14th DAY OF January 1985  
 (SIGNED) Lawrence J. Brock COUNTY SURVEYOR RCE 13528  
 BY \_\_\_\_\_ DEPUTY

**RECORDERS CERTIFICATE**  
 FILED THIS 15th DAY OF January 1985  
 AT 10:41 AM IN BOOK 17 OF 25 AT PAGE 19 AT THE REQUEST OF the County Engineer  
 SIGNED  
 ILA DIGGS COUNTY RECORDER  
 BY \_\_\_\_\_ DEPUTY  
 FEE \$6.00  
 FILE NO. 5128



**RECORD OF SURVEY**  
 IN THE UNINCORPORATED TERRITORY OF PLUMAS COUNTY, CALIFORNIA BEING A PORTION OF SECTION 17 T29N R5E MDM  
 FOR  
**LASSEN NATIONAL FOREST**  
 BY NORTH VALLEY SURVEYORS  
 REDDING, CALIFORNIA  
 AUGUST 1984  
 SCALE 1" = 500'  
 SHEET 1 OF 1

- ⑧ 17/20 PRORATED POSITION  
 6" LODGEPOLE S70W 23.5' NEW  
 6" FIR N40W 28.5' NEW
- ⑨ 18/17 TO W.C. PRORATED POSITION  
 26" POPLAR N40W 27.0' NEW  
 30" POPLAR SIDE 13.0' NEW
- ⑩ W 1/16  
 8" FIR N70E 21.0' NEW  
 14" FIR S55E 16.0' NEW
- ⑪ C 1/4  
 8" FIR NORTH 8.0' NEW  
 6" FIR S5W 12.0' NEW
- ⑫ N 1/16 18/17  
 12" LODGEPOLE S45E 31.0' NEW  
 12" LODGEPOLE N18W 35.0' NEW
- ⑬ NW 1/16  
 6" FIR S70W 8.0' NEW  
 6" PINE N10E 21.0' NEW
- ⑭ N 1/16  
 6" FIR N80W 14.0' NEW  
 6" PINE N80E 28.0' NEW