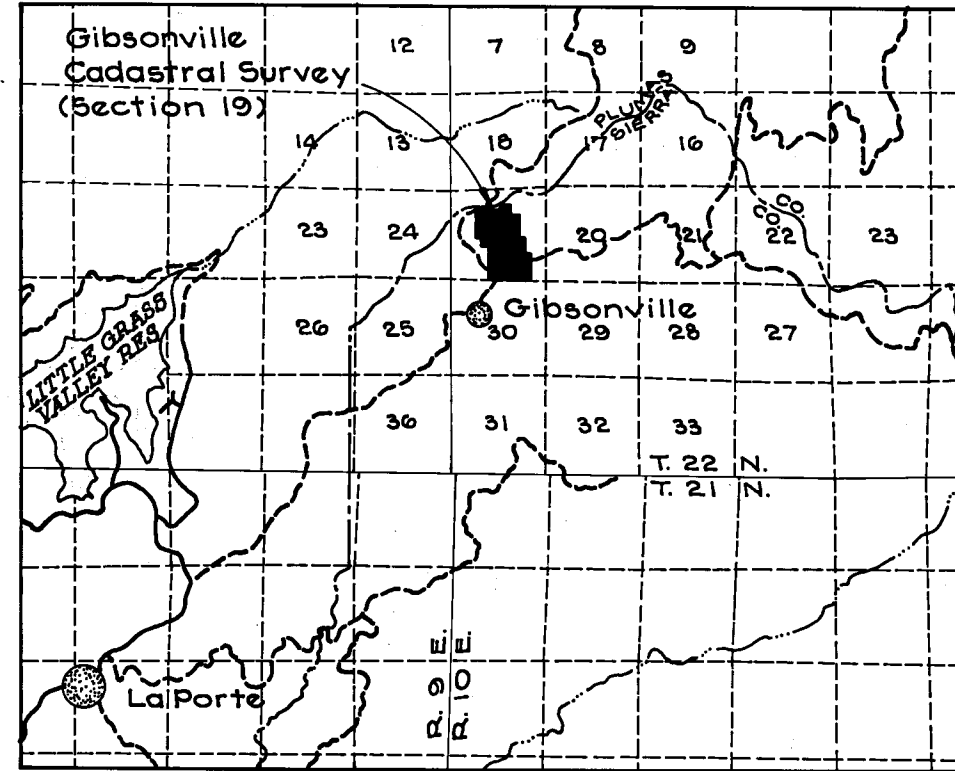
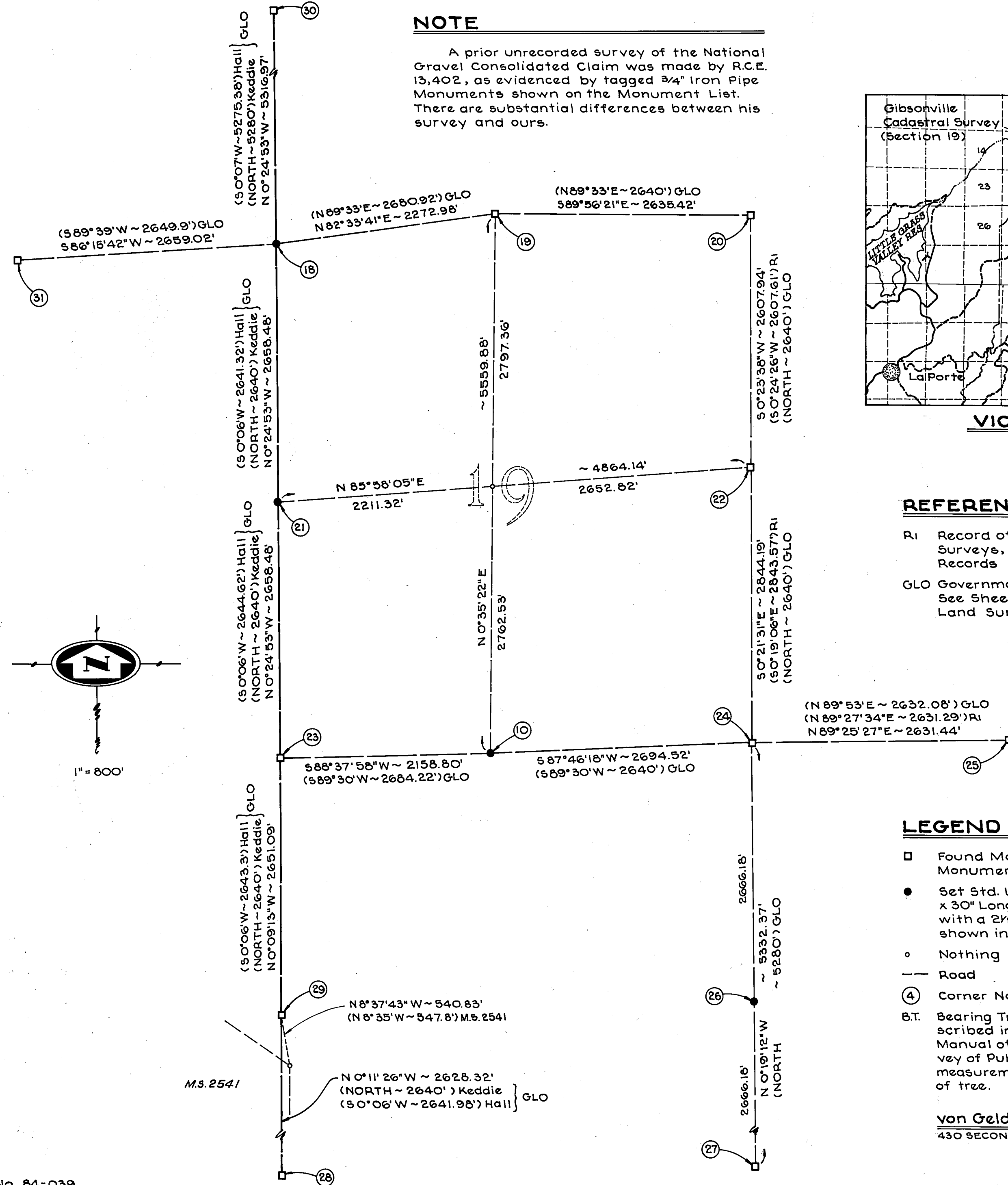


NOTE

A prior unrecorded survey of the National Gravel Consolidated Claim was made by R.C.E. 13,402, as evidenced by tagged 3/4" Iron Pipe Monuments shown on the Monument List. There are substantial differences between his survey and ours.



VICINITY MAP
Scale: 1/2" = 1 Mi. ±

REFERENCES

- R1 Record of Survey, Book 3 of Surveys, Page 41; Sierra County Records
- GLO Government Land Office Surveys; See Sheet 2 for History of Public Land Surveys

LEGEND

- Found Monument as Noted in Monument List (See Sheet 3)
- Set Std. U.S.F.S. Monument a 2" x 30" Long Alum. Pipe in Rock Md. with a 2 1/2" Alum. Cap marked as shown in Monument List
- Nothing Found or Set
- Road
- ④ Corner Note Designator - See Sheet 3
- B.T. Bearing Tree - All New B.T.'s were scribed in accordance with the Manual of Instructions for the Survey of Public Lands, or as Noted. All measurements taken to nail in side of tree.

von Geldern Engineering Company
430 SECOND STREET, YUBA CITY, CALIFORNIA

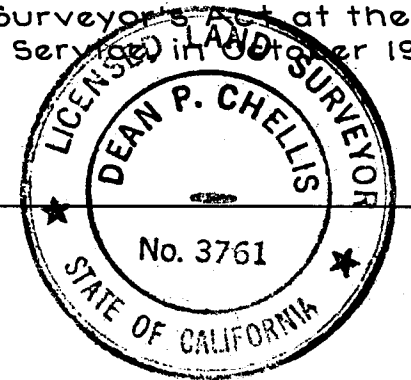
BASIS OF BEARINGS

The bearings shown on this map are based on True North, as established by the mean of solar observations made in the vicinity of the West Quarter Corner of Section 19, T. 22 N., R. 10 E.
Lat: 39° 45' 14"
Long: 120° 54' 50"
Date: 6-15-84

SURVEYOR'S CERTIFICATE

This map correctly represents a survey made by me or under my direction in conformance with the requirements of the Land Surveyor's Act at the request of the U.S.D.A., Forest Service on February 1984.

Dean P. Chellis
DEAN P. CHELLIS, L.S. 3761



COUNTY SURVEYOR'S CERTIFICATE

This map has been examined for conformance with the requirements of the Land Surveyor's Act this 20th day of February 1985.

Lawrence J. Brock
LAWRENCE J. BROCK, R.C.E. 13,528
Plumas County Engineer

RECORDER'S CERTIFICATE

Filed this 20th day of February 1985, at 1:10 P.m., in Book 7 of Maps and Surveys at Page 23-25, at the request of the County Engineer.

ILA DIGGS By: *Ruth Cammack*
Plumas County Recorder Deputy
File No. 5660 Fee: \$ 9⁰⁰

RECORD OF SURVEY

for the U.S.D.A., Forest Service
Gibsonville Cadastral Survey
**BEING A PORTION OF SECTION 19,
T. 22 N., R. 10 E., M.D.B. & M., IN SIERRA
AND PLUMAS COUNTIES, CALIFORNIA.**

OCTOBER 1984

SHEET 1 OF 3