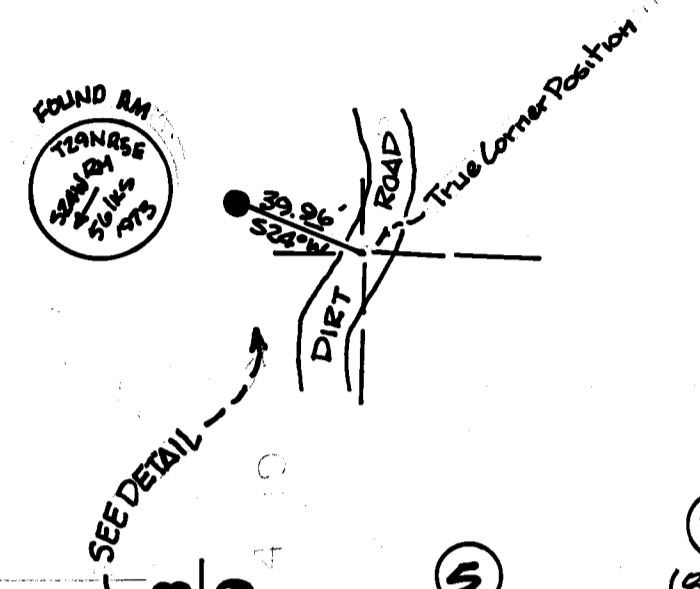


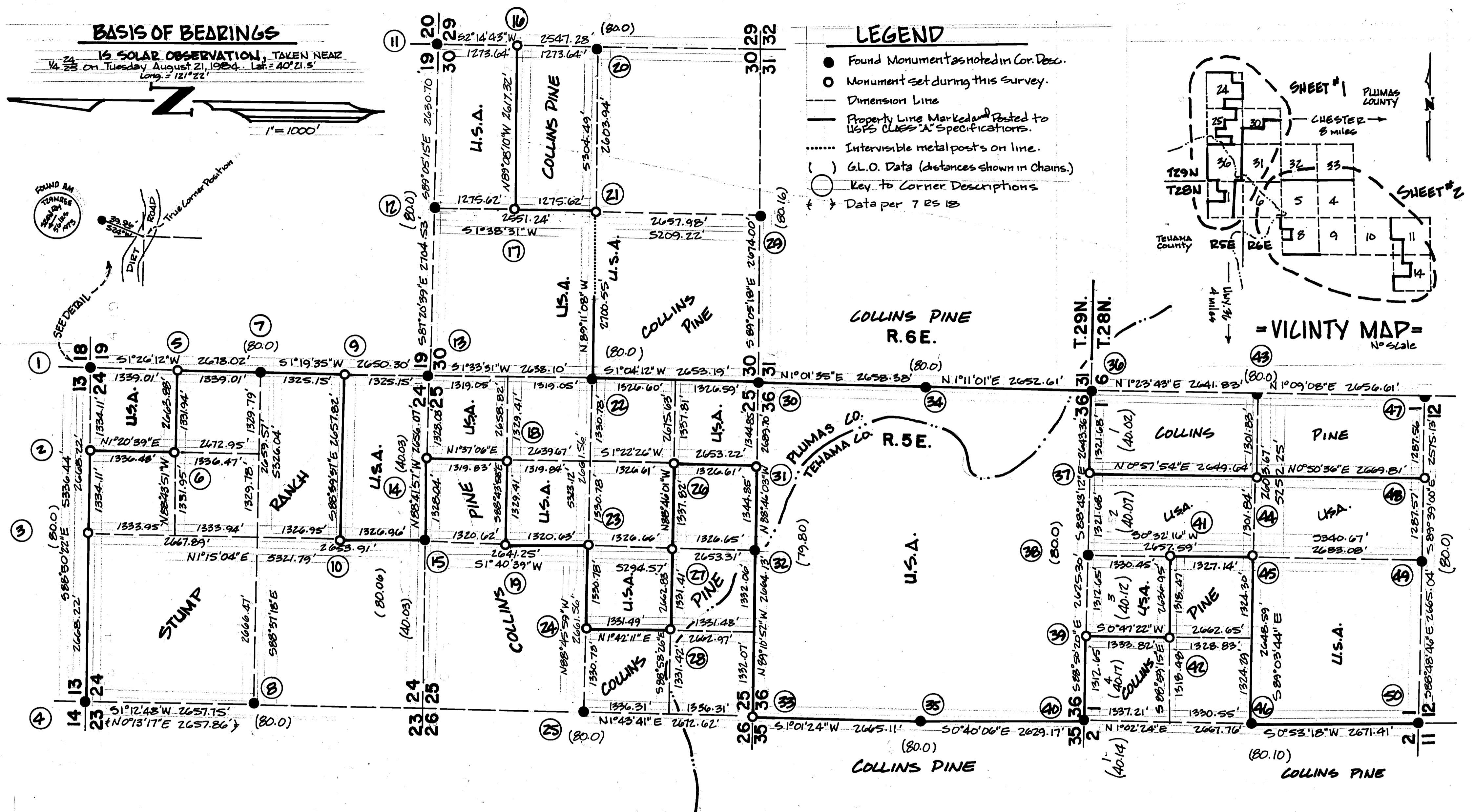
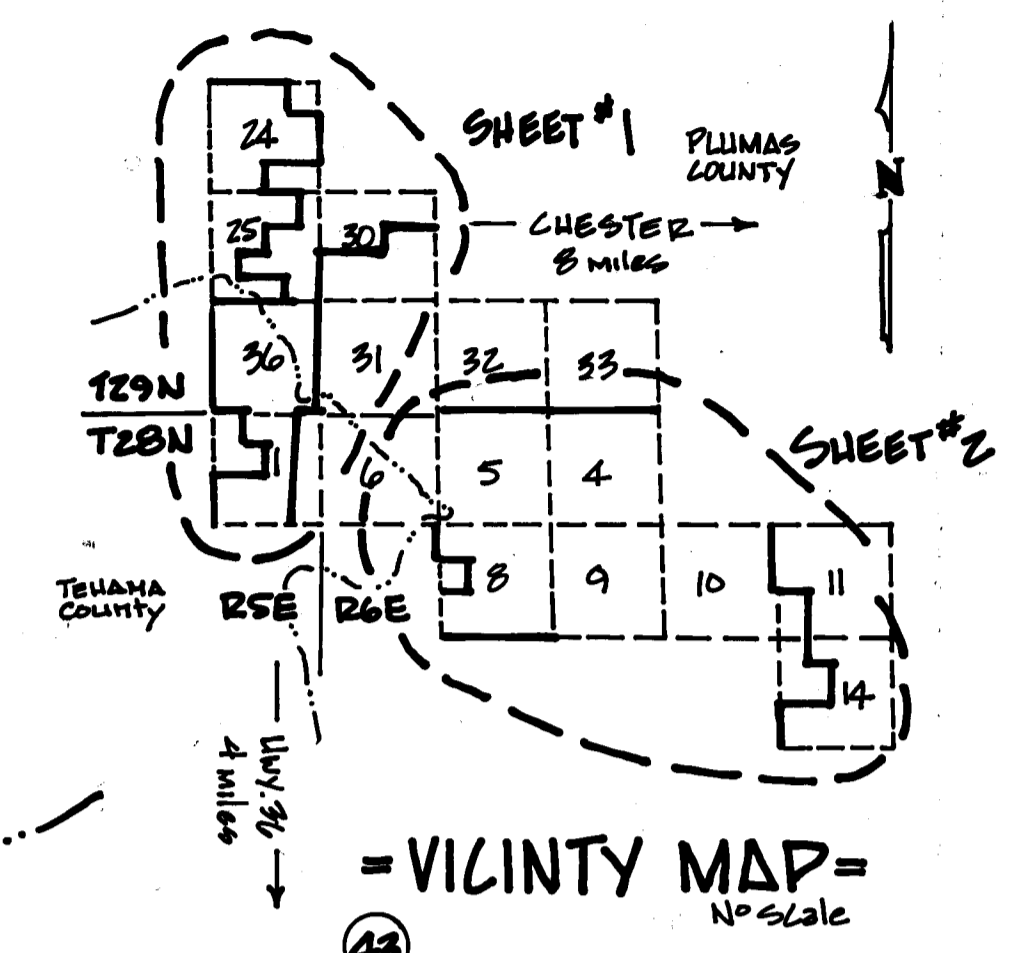
BASIS OF BEARINGS

IS SOLAR OBSERVATION, TAKEN NEAR
4. 25 on Tuesday August 21, 1984. Lat. = 40° 21.5'
Long. = 121° 22'



LEGEND

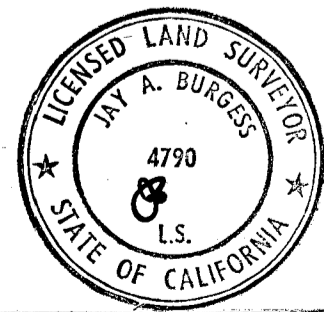
- Found Monument as noted in Cor. Desc.
- Monument set during this survey.
- - - Dimension Line
- Property Line Marked and Posted to USFS CLASS "A" Specifications.
- Intervisible metal posts on line.
- () G.L.O. Data (distances shown in Chains.)
- Key to Corner Descriptions
- + Data per 7 RS 18



SURVEYOR'S STATEMENT

This map correctly represents a survey made by me or under my direction in conformance with the requirements of the Land Surveyors Act at the request of the USDA - Forest Service in September of 1984.

Jay A. Burgess
Jay A. Burgess LS 4790



COUNTY SURVEYOR'S STATEMENT

This map has been examined in accordance with Section 8766 of the Land Surveyors Act this 20th Day of February 1985.

County Surveyor *Lawrence J. Brock*
Lawrence J. Brock RCE 13528

RECORDER'S CERTIFICATE

Filed this 25th Day of February 1985 at 2:10 P.M. in Book 7 of Record of Surveys at Page 27-29 at the request of the County Engineer.

County Recorder *Ila Diggs*

Deputy *Beth Comstock*

File # 5768 Fee \$ 9.00

RECORD OF SURVEY FOR U.S.D.A. FOREST SERVICE - LASSEN "SKI ADAPTAL SURVEY"

In T. 28N., R. 5E., Sec. 1, T. 28N., R. 6E., Secs. 8, 11, 14 and 17, T. 29N., R. 5E., Secs. 24, 25 and 36, T. 29N., R. 6E., Secs. 30, 32 and 33 M.D.M. in the unincorporated territory of Plumas and Tehama Counties, State of California.

BURGESS
Land Surveys
Redding, Calif.

1" = 1000'
RLR 12
Sheet 1 of 3
Nov. 1984