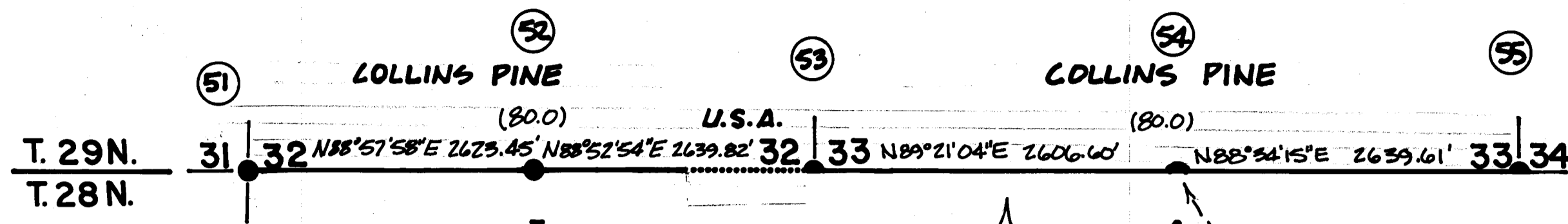


R. 6 E.

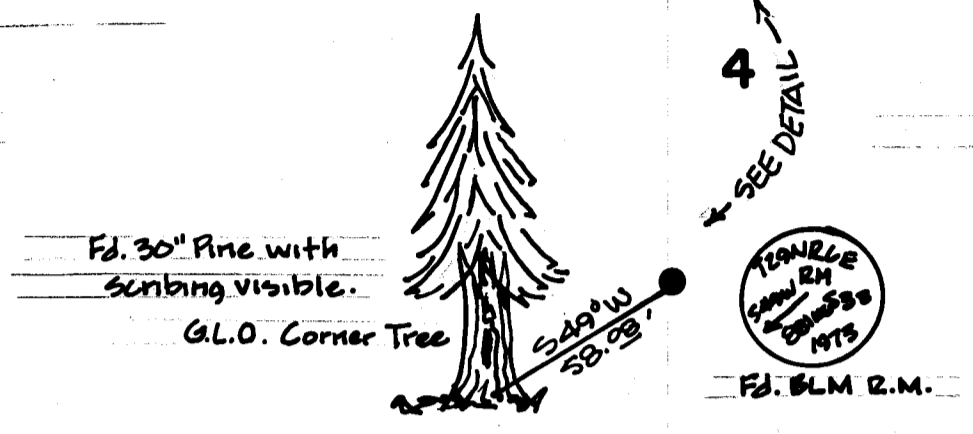


**BASIS OF BEARINGS**  
IS THE N/S CENTER LINE OF SECTION 14 PER I RS 136.

At Sec. Cor 31/32 on Monday August 20, 1984. Lat. = 40°19.5' Long. = 121°20.8'

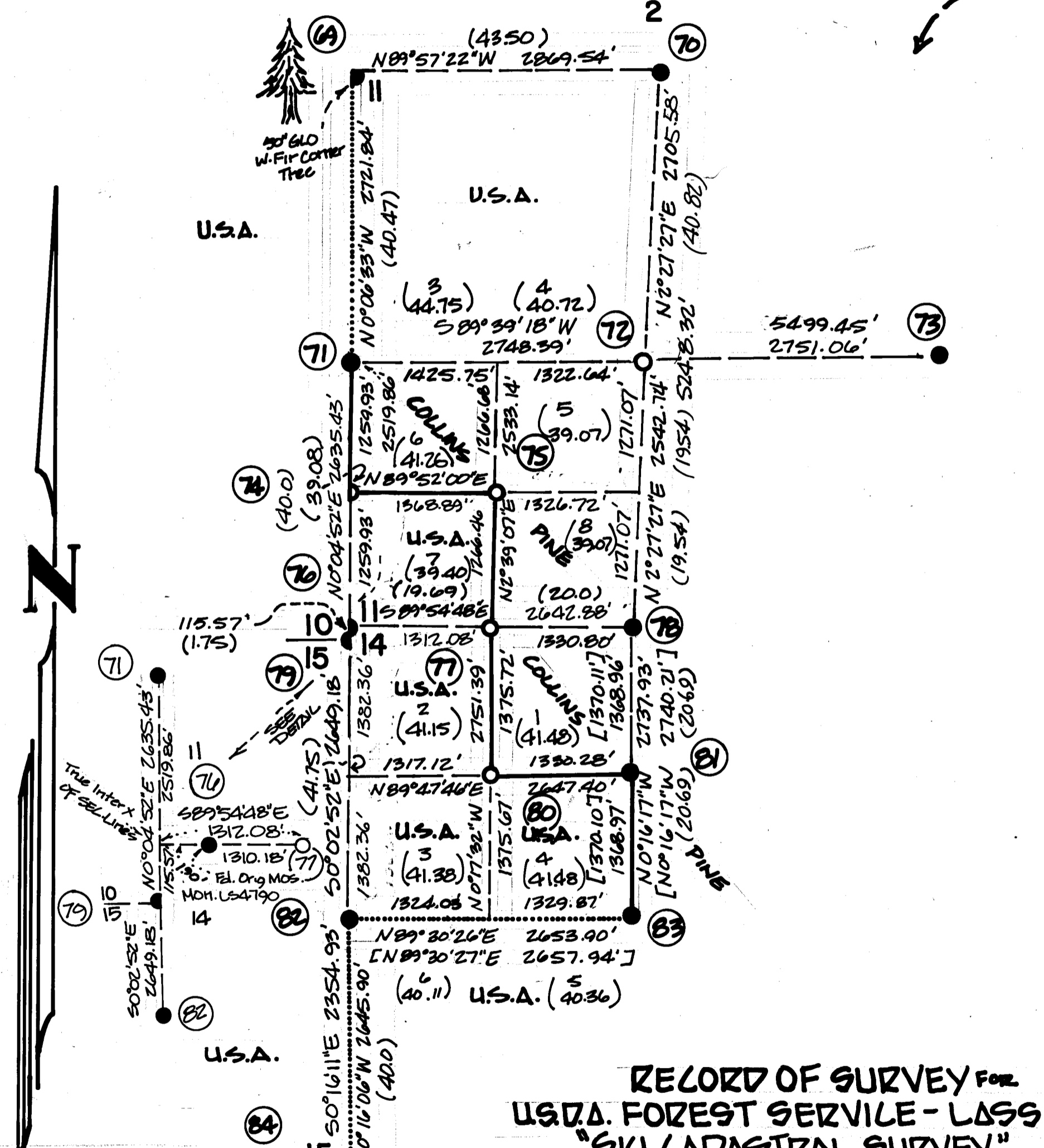
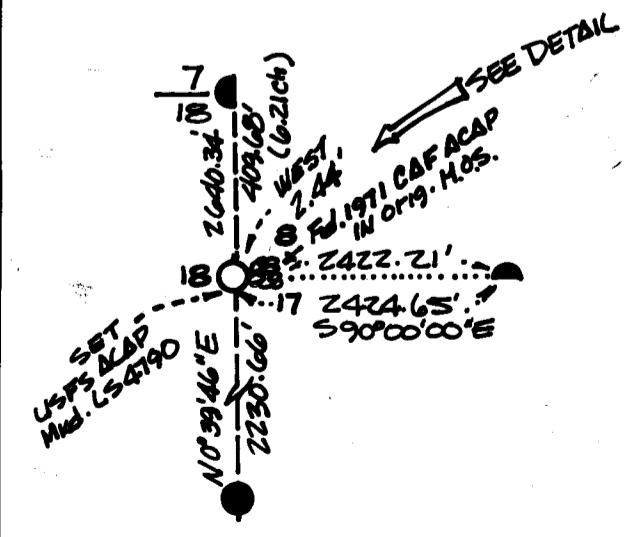
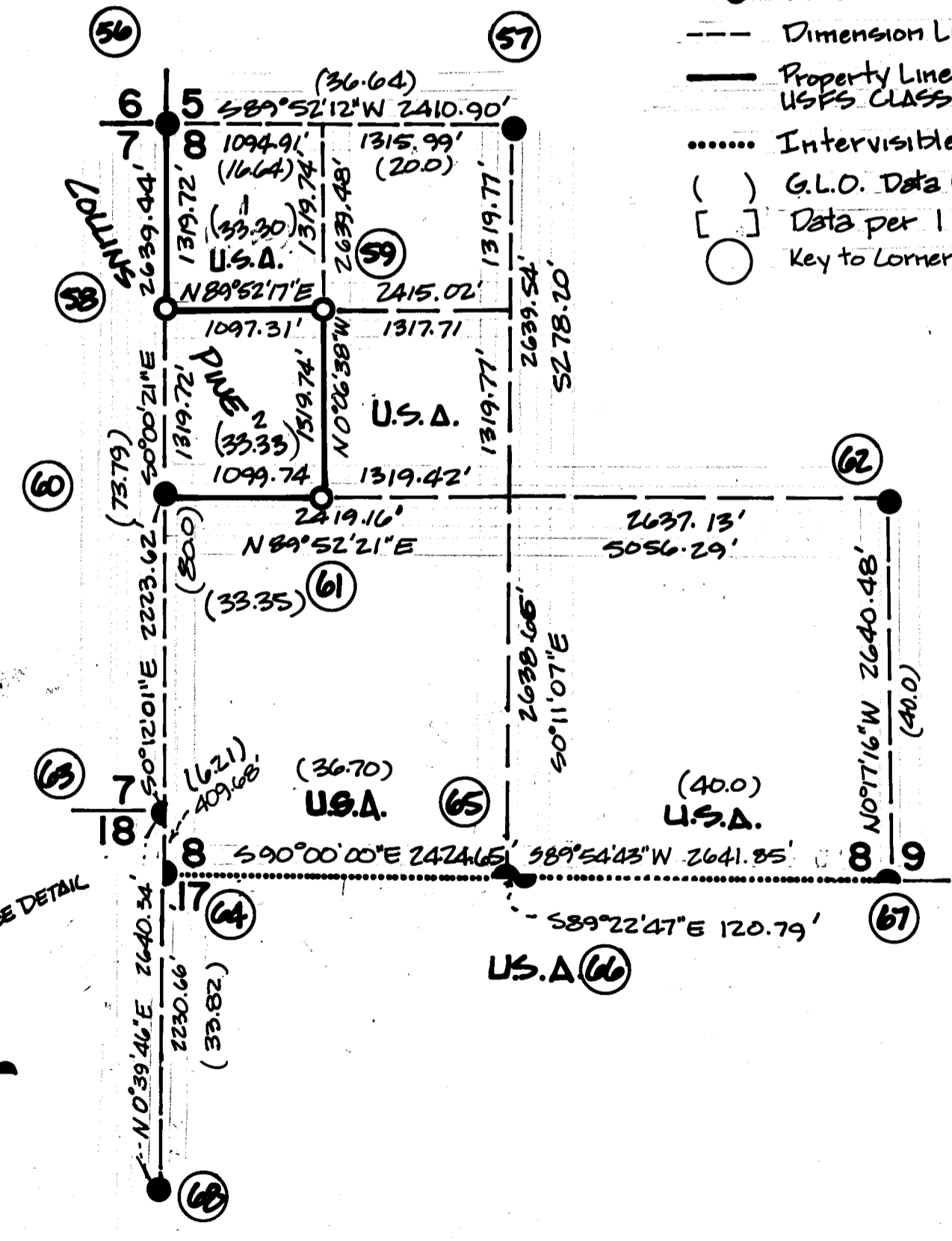
**BASIS OF BEARINGS**  
IS SOLAR OBSERVATION

Near Sec. Cor. 7/18 on Monday August 20, 1984. Lat. = 40°17.8' Long. = 121°20.8'



**LEGEND**

- Found Monument as noted in Cor. Desc.
- Monument set during this Survey.
- Dimension Line
- Property Line Marked and Posted to USFS CLASS "A" Specifications.
- ..... Intervisible metal posts on line.
- ( ) G.L.O. Data (distances shown in chains)
- [ ] Data per I RS 136
- Key to Corner Descriptions



T. 28 N., R. 6 E., M.D.M.

1" = 1000'

**RECORD OF SURVEY FOR**  
**U.S.A. FOREST SERVICE - LASSEN**  
**"SKI CADASTRAL SURVEY"**

In T29N, R26E, SEC'S. 32 & 33 AND T28N, R26E SEC'S. 8, 11 & 14 M.D.M. in the Unincorporated territory of Plumas County, State of California.

BUR 6896  
Land Surveys  
Redding, Calif.

1" = 1000'  
RLR:R  
Sheet 2 of 3

Nov. 1984