

BASIS OF BEARINGS

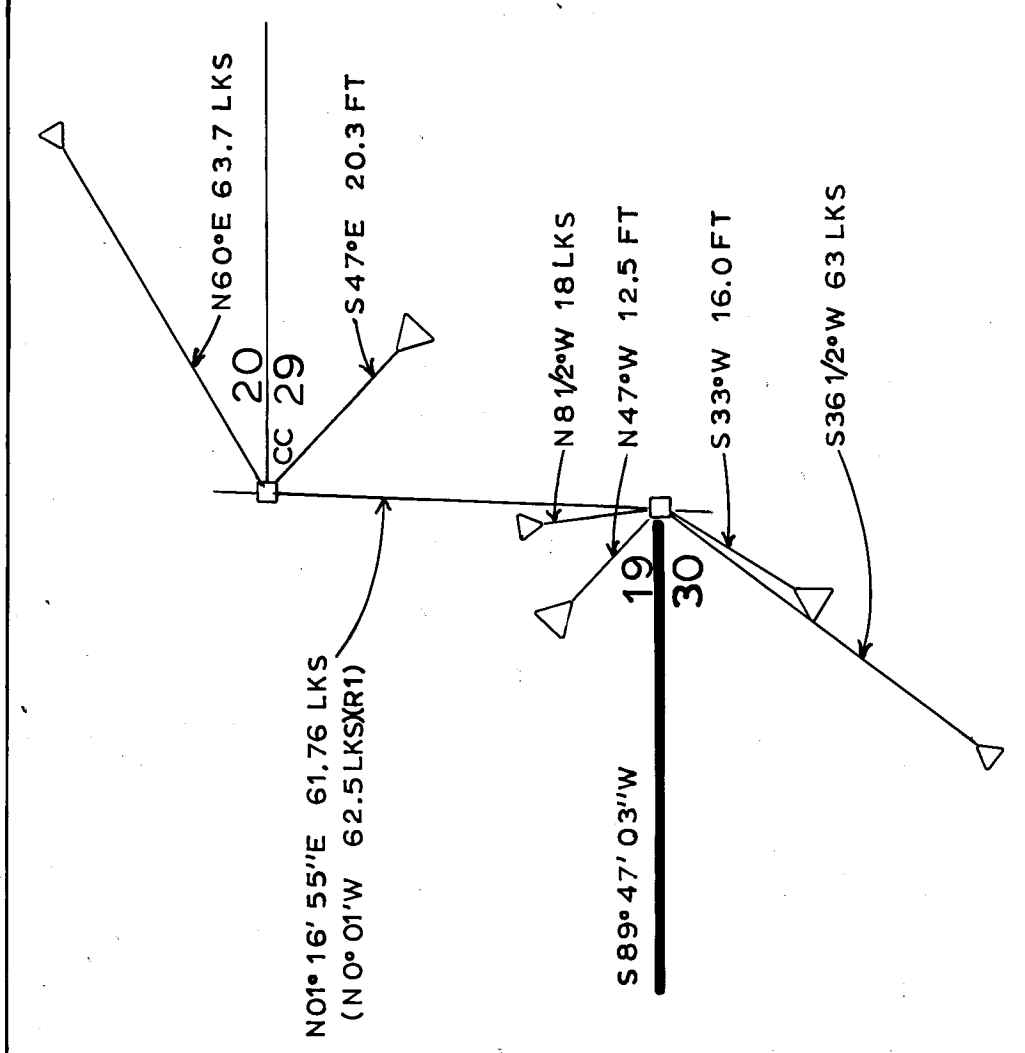
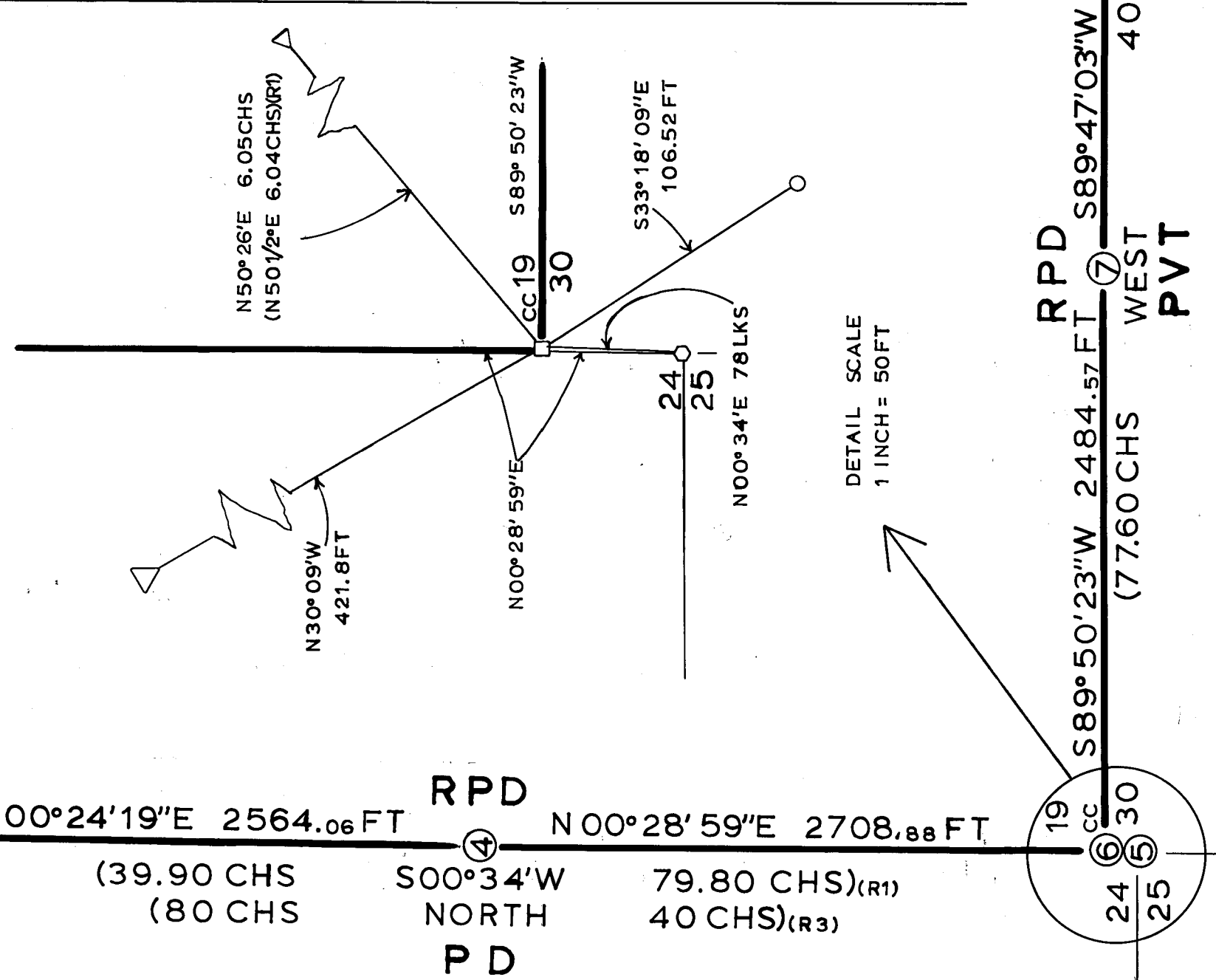
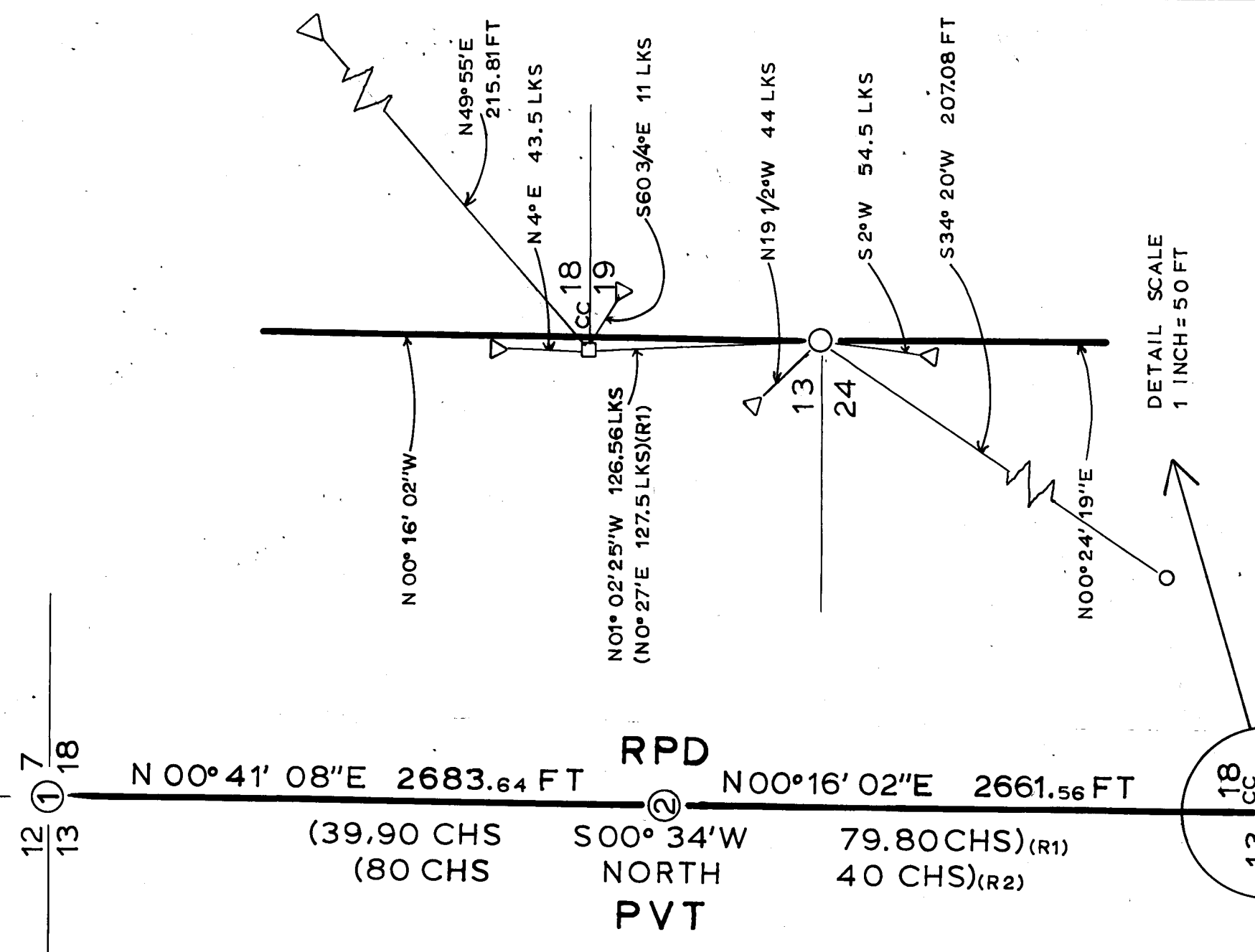
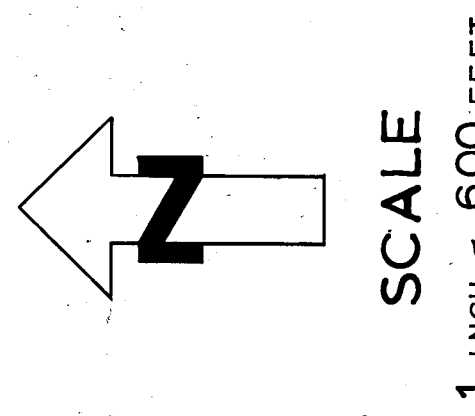
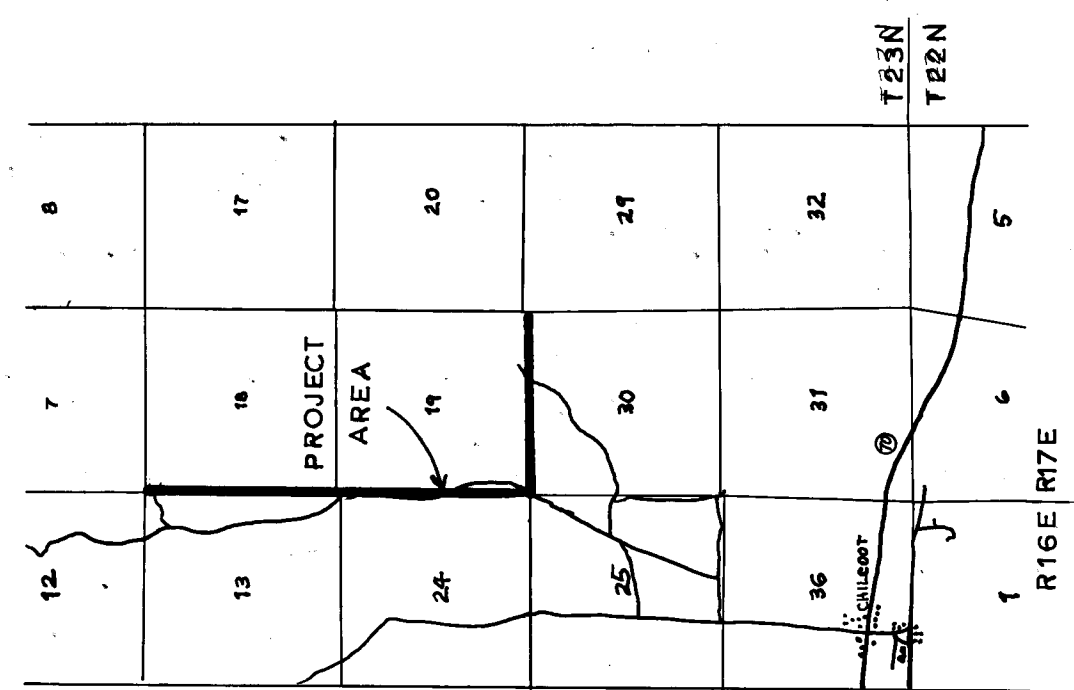
A SOLAR OBSERVATION WAS TAKEN 9-14-84 AT THE CLOSING CORNER FOR SECTIONS 19 & 30, T23NR17E, M. D. M. LATITUDE: 39° 49' 24.6", LONGITUDE: 120° 07' 30"

LEGEND

- (R1) GLO FIELDNOTES BY G. W. PEARSON, 1912
- (R2) GLO FIELDNOTES BY D. D. BROWN, 1875
- (R3) GLO FIELDNOTES BY E. DYER, 1863
- PVT PRIVATELY OWNED LANDS
- PD PUBLIC DOMAIN - LANDS ADMINISTERED BY THE BUREAU OF LAND MANAGEMENT
- RPD RESERVED PUBLIC DOMAIN - LANDS ADMINISTERED BY THE U. S. FOREST SERVICE
- LINES MARKED AND POSTED TO U. S. FOREST SERVICE SPECIFICATIONS

- △ ORIGINAL BEARING TREE
- NEW BEARING TREE ESTABLISHED ON THIS SURVEY
- GRANITE STONE MONUMENT
- UNRECORDED MONUMENT (SEE NOTE 5, SHEET 2)
- FOREST SERVICE ALUMINUM MONUMENT (SEE LEGEND, SHEET 2)
- FOREST SERVICE DRIVE-IN MONUMENT FOR A REFERENCE MONUMENT (SEE LEGEND, SHEET 2)
- FT FEET
- CHS CHAINS
- LKS LINKS

VICINITY MAP



DETAIL SCALE
1 INCH = 20 FT

DETAIL SCALE
1 INCH = 50 FT

DETAIL SCALE
1 INCH = 50 FT

SURVEYOR'S STATEMENT
THIS MAP CORRECTLY REPRESENTS A SURVEY MADE BY ME OR UNDER MY DIRECTION IN CONFORMANCE WITH THE REQUIREMENTS OF THE LAND SURVEYORS' ACT AT THE REQUEST OF THE UNITED STATES FOREST SERVICE IN DECEMBER, 1984.

Robert Grauberger
ROBERT GRAUBERGER LS5287

COUNTY SURVEYOR'S STATEMENT
THIS MAP HAS BEEN EXAMINED IN ACCORDANCE WITH SECTION 8766 OF THE LAND SURVEYORS' ACT THIS 27TH DAY OF March, 1985

Lawrence J. Brock
LAWRENCE J. BROCK RCE 13528
PLUMAS COUNTY ENGINEER

RECORDER'S CERTIFICATE
FILED THIS 27 DAY OF March, AT 1:00 P.M. IN BOOK 7 OF RECORD OF SURVEYS AT PAGE 3132 AT THE REQUEST OF THE COUNTY ENGINEER.

FEE \$ 700
FILE NO. 6527

ILA DIGGS
COUNTY RECORDER

BY *Patricia Lacey*
DEPUTY

RECORD OF SURVEY
LOCATED IN SECTIONS 13 & 24, T23NR16E AND SECTIONS 18, 19 & 30, T23NR17E, MT. DIABLO MERIDIAN, PLUMAS COUNTY, CALIFORNIA; FOR THE PLUMAS NATIONAL FOREST

DECEMBER, 1984 SHEET 1 OF 2