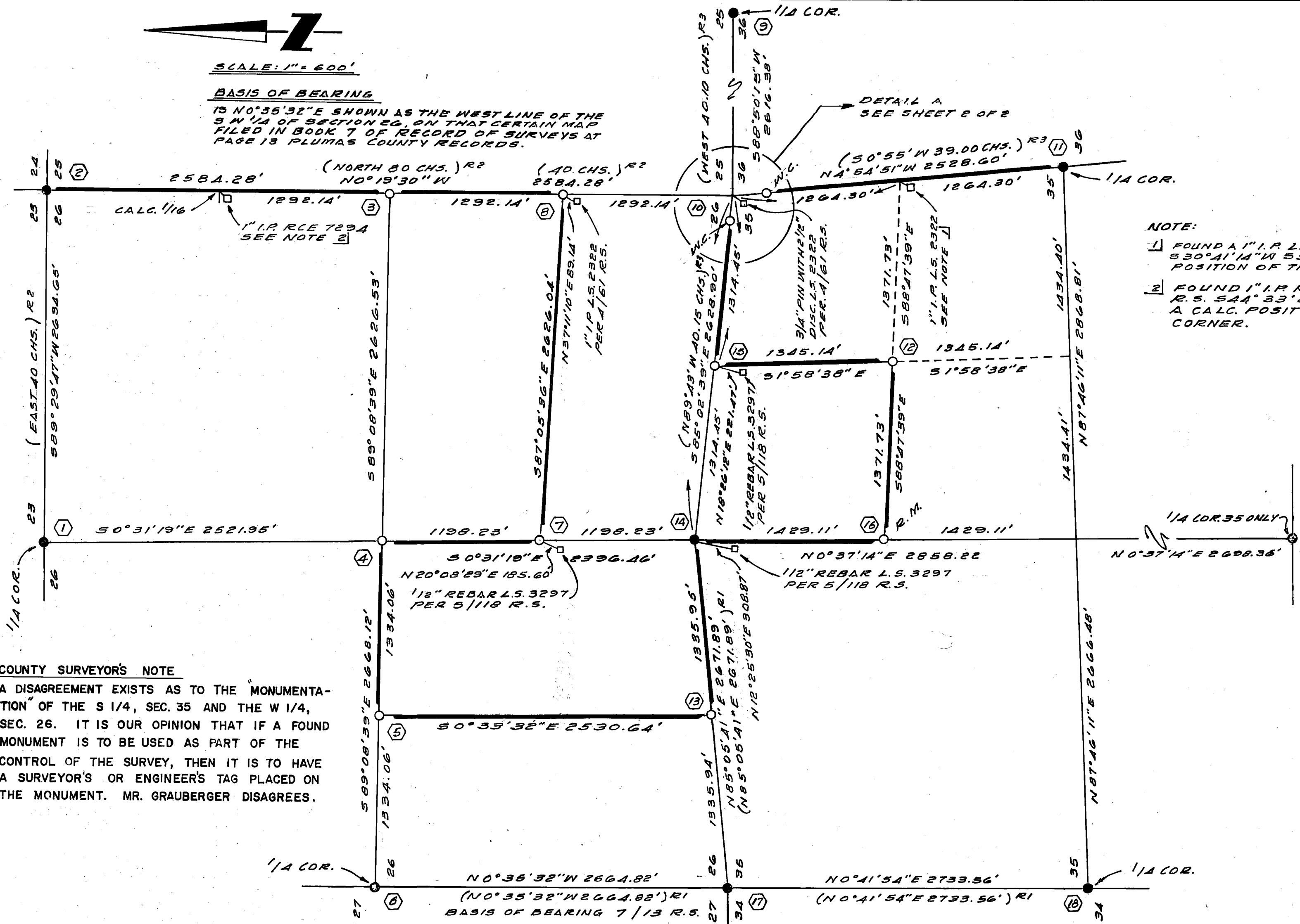




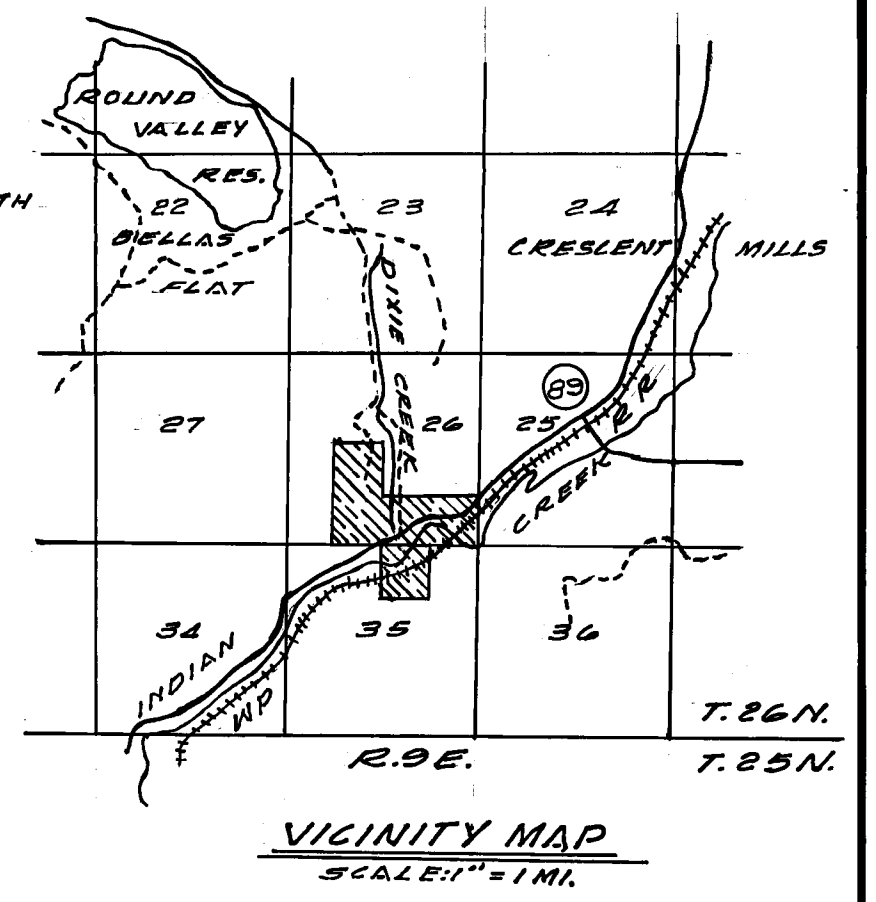
SCALE: 1" = 600'

**BASIS OF BEARING**

IS N0°35'32"E SHOWN AS THE WEST LINE OF THE S W 1/4 OF SECTION 26, 27 THAT CERTAIN MAP FILED IN BOOK 7 OF RECORD OF SURVEYS AT PAGE 13 PLUMAS COUNTY RECORDS.



**NOTE:**  
1 FOUND A 1" I.P. L.S. 2322 PER A/GI R.S. 530°41'14"W 53.62' FROM A CALC. POSITION OF THE 11/16 CORNER.  
2 FOUND 1" I.P. RCE 7294 PER 3/75 R.S. 544°33'26"W 24.43' FROM A CALC. POSITION OF THE 11/16 CORNER.



**LEGEND**

- FOUND CORNERS AS NOTED (SEE SHEET 2 OF 2).
- CORNERS SET - SET U.S.F.S.S.M. EXCEPT AS NOTED (SEE SHEET 2 OF 2).
- CORNERS BY OTHERS AS NOTED.
- W.C. - WITNESS CORNER.
- R.M. - REFERENCE MONUMENT.
- U.S.F.S.S.M. - UNITED STATES FOREST SERVICE STANDARD SURVEY MONUMENT.
- GOVERNMENT BOUNDARY LINES MARKED AND POSTED.
- ( ) R1 - RECORD DATA FROM 7 / 13 R.S.
- ( ) R2 - RECORD DATA FROM FIELD NOTES BY D.D. BROWN IN 1869.
- ( ) R3 - RECORD DATA FROM FIELD NOTES BY A.W. KEDDIE IN 1885.
- (NBT) - NEW BEARING TREES MARKED THIS SURVEY.
- C.A.F. - COLLINS ALMANOR FOREST.
- F.W.B. - FROM WHICH BEARS.
- M.O.S. - MOUND OF STONE.
- I.P. - IRON PIPE.
- MKD. - MARKED.

**COUNTY SURVEYOR'S NOTE**  
A DISAGREEMENT EXISTS AS TO THE MONUMENTATION OF THE S 1/4, SEC. 35 AND THE W 1/4, SEC. 26. IT IS OUR OPINION THAT IF A FOUND MONUMENT IS TO BE USED AS PART OF THE CONTROL OF THE SURVEY, THEN IT IS TO HAVE A SURVEYOR'S OR ENGINEER'S TAG PLACED ON THE MONUMENT. MR. GRAUBERGER DISAGREES.

**SURVEYOR'S STATEMENT**

This map correctly represents a survey made by me or under my direction in conformance with the requirements of the Land Surveyor's Act at the request of THE UNITED STATES FOREST SERVICE in March, 1985.

Robert Grauberger  
Robert Grauberger L.S. 5287

**COUNTY SURVEYOR'S STATEMENT**

This map has been examined in accordance with Section 8766 of the Land Surveyor's Act this 27 day of March, 1985.

Lawrence J. Brock  
Lawrence J. Brock R.C.E. 13528  
Plumas County Surveyor

**RECORDER'S CERTIFICATE**

Filed this 28 day of March, 1985 at 8:45 A.M. in Book 7 of Surveys, at page 33-34 at the request of the County Engineer.

Fee \$ 700  
File No 6536

Ila Diggs  
County Recorder  
By Patricia Lacey  
Deputy

**RECORD OF SURVEY**

FOR THE UNITED STATES FOREST SERVICE IN SECTIONS 26 AND 35, T.26N., R.3E., M.D.M., IN THE UNINCORPORATED AREA OF PLUMAS COUNTY, STATE OF CALIFORNIA.  
ROBERT GRAUBERGER L.S. 5287  
OCTOBER 1984 SHEET 1 OF 2