

CORNER NOTES

NOTE:

UNITED STATES FOREST SERVICE STANDARD SURVEY MONUMENTS SET IN THIS SURVEY ARE 2 1/2" ALUMINUM PIPES 30" LONG WITH 3" CAP AND CAST FLANGED BREAK AWAY BASE, STAMPED WITH APPROPRIATE CORNER DESIGNATION, (AS PER MANUAL OF SURVEYING INSTRUCTIONS 1973), L.S. 5287, 1984.

CORNER

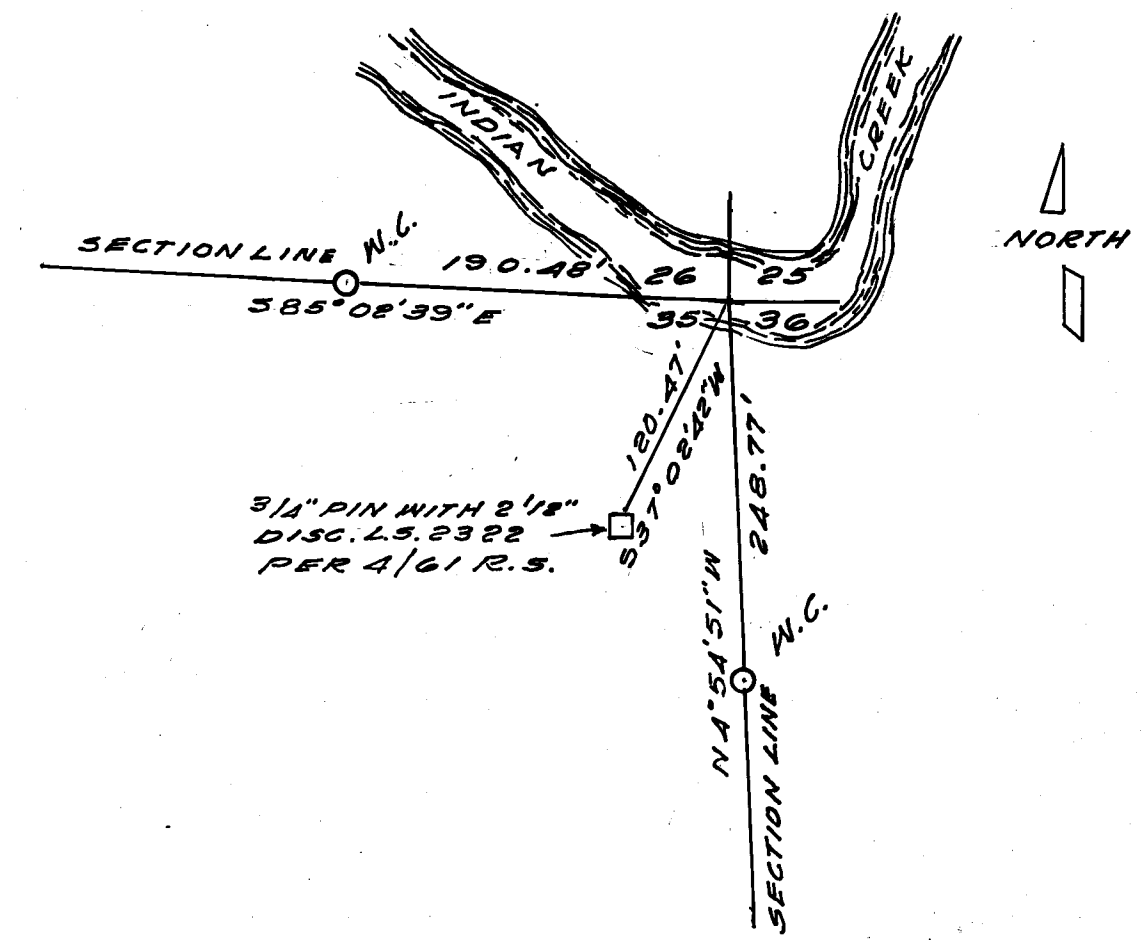
- 1 1/4 COR. SEC'S. 23 AND 26, FOUND A STANDARD B.L. M. BRASS CAP MONUMENT SET 1973, A 10" BLACK OAK 547'39"E 22.2' WITH CLOSED BLAZE, A 35" W. FIR N17'21"E 17.5' WITH OPEN BLAZE, A 20" CEDAR 535'E 41.1' WITH OPEN BLAZE MKD. 1/4 S 26 BT, A 9" CEDAR N42'30"E 15.1' WITH OPEN BLAZE MKD. 1/4 S 23 BT.
2 SEC. COR. SEC'S. 23, 24, 25 AND 26, (REC. 14" X 4" X 8" STONE IN M.O.S., A 6" OAK N 35'E 27 LKS., A 18" P. PINE N 11 1/2'E 17 LKS.), FOUND A 3/4" IRON PIPE TAGGED RCE 7294 IN A 16" X 36" M.O.S., A 35" FIR N 62'33"E 10.7' WITH AXE SCARS & K-TAGS, A 12" P. PINE S 20'30"W 14.7' WITH K-TAGS. REPLACED THE 3/4" IRON PIPE WITH A U.S.F.S.S.S.M. IN A 10" X 36" M.O.S. AND BURIED IRON PIPE ALONGSIDE MONUMENT BELOW GROUND LEVEL. F.W.B. A 18" D. FIR N 22'30"W 18.9' MKD. T 26 N R 3 E S 23 BT (NBT), A 10" P. PINE N 21'E 15.2' MKD. T 26 N R 3 E S 24 BT (NBT), A 25" P. PINE S 44'45"W 43.3' MKD. T 26 N R 3 E S 26 BT (NBT).
3 1/4 COR. SEC'S. 25 AND 26, (REC. 10" X 8" X 6" STONE IN M.O.S. NO B.T.S. OF RECORD) NO EVIDENCE OF CORNER FOUND. SET A U.S.F.S.S.S.M. IN A 8" X 24" M.O.S. AT SINGLE PRORATE POSITION, F.W.B. A 12" D. FIR N 73'W 14.0' MKD. 1/4 S 26 BT (NBT), A 13" D. FIR S 45'E 4.9' MKD. 1/4 S 25 BT (NBT).
4 1/4 COR. SEC. 26, SET A U.S.F.S.S.S.M. IN A 18" X 18" M.O.S., F.W.B. A 26" D. FIR N 31'20"E 32.5' MKD. C 1/4 S 26 BT, A 18" D. FIR S 12'37"E 22.7' MKD. C 1/4 S 26 BT.
5 CN 1/16 COR. SEC 26, SET A U.S.F.S.S.S.M. IN A 24" X 24" M.O.S., F.W.B. A 8" CEDAR S 68'51"W 32.6' MKD. CN 1/16 S 26 BT, A 4" D. FIR N 31'52"E 7.8' MKD. X BT.
6 1/4 COR. SEC'S 26 AND 27, (REC. 12" X 10" X 6" STONE IN M.O.S.), FOUND A 2 1/2" ALUMINUM CAPPED MONUMENT IN 30" X 9" M.O.S. SET BY C.A.F. IN 1976 (REC. 10" FIR S 40'W 55 LKS.) FOUND 72" FIR STUMP HOLE S 39'56"W 36.9' AND A 2'50" FIR LAYING DOWN HILL APPROX. 40' FROM THE STUMP HOLE, BARK SCRIBED WITH 1/4 S BT LEGIBLE, A 15" D. FIR S 34'16"E 7.7' MKD. 1/4 S 26 BT, A 24" D. FIR N 85'39"W 9.0' MKD. 1/4 S 27 BT.
7 CS 1/16 COR. SEC. 26, SET A U.S.F.S.S.S.M. IN A 30" X 10" M.O.S., F.W.B. A 4" OAK N 54'13"E 20.1' MKD. X BT, A 15" D. FIR N 89'48"E 80.5' MKD. CS 1/16 S 26 BT.
8 S 1/16 COR. SEC'S. 25 AND 26, SET A U.S.F.S.S.S.M. IN A 24" X 24" M.O.S., F.W.B. A 20" D. FIR S 15'51"E 38.9' MKD. S 1/16 S 25 BT, A 14" D. FIR S 35'57"W 12.4' MKD. S 1/16 S 26 BT.
9 1/4 COR. SEC'S. 25 AND 36, (REC. 10" X 6" X 4" STONE IN M.O.S., F.W.B. 18" FIR WEST 130 LKS.) FOUND PORTION OF 1/4" X 2" STRAP IRON EXTENDING 6" ABOVE 18" X 30" M.O.S., F.W.B. A 50" FIR N 86'48"W 91.3' (138 LKS) WITH OPEN BLAZE AND VISIBLE BT, REPLACED STRAP IRON WITH A U.S.F.S.S.S.M. IN A 16" X 24" M.O.S., F.W.B. A 22" D. FIR S 50'E 39.8' MKD. 1/4 S 36 BT (NBT) 9" D. FIR N 60'W 27.5' MKD. 1/4 S 25 BT (NBT)

CORNER

- 10 SEC. COR. SEC'S. 25, 26, 35 AND 36, (REC. 1869 D.D. BROWN MKD. 8" ALDER, 1885 A. W. KEDDIE FOUND 12" ALDER MKD. ON FOUR SIDES NO B.T.S. OF RECORD) THE DOUBLE PRORATE POSITION FALLS IN WATER COURSE OF INDIAN CREEK, F.W.B. A 5/8" IRON PIPE TAGGED L S 2322 IN A 18" X 24" M.O.S., S 37'02'42"W 120.47' SET FOR SECTION CORNER PER A/GI R.S., FOR WITNESS CORNER ON SECTION LINE BETWEEN SEC'S. 26 AND 35, SET A U.S.F.S.S.S.M. IN A 18" X 24" M.O.S. N 85'02'39"W 190.48' FROM TRUE CORNER POSITION, F.W.B. A 7" S. PINE S 25'E 19.5' MKD. X BT (NBT), A 15" D. FIR S 32'W 28.1' MKD. X BT (NBT), FOR WITNESS CORNER ON SECTION LINE BETWEEN SEC'S 35 AND 36, SET A U.S.F.S.S.S.M. IN 10" X 36" M.O.S. S 4'54'51"E 248.77' FROM TRUE CORNER POSITION, F.W.B. A 5" D. FIR S 9'W 27.6' MKD. X BT (NBT), A 11" D. FIR N 50'W 31.2' MKD. X BT (NBT).
11 1/4 COR. SEC'S. 35 AND 36, (REC. 14" X 14" X 6" QUARTZITE STONE MKD. 1/4 IN M.O.S. NO B.T.S. OF RECORD), FOUND 16" X 14" X 5" STONE MKD. 1/4 EXTENDING 12" ABOVE A 24" X 48" M.O.S. F.W.B. 17" FIR N 48'48"E 0' MKD. 1/4 S BT BARK SCRIBED, 13" FIR S 10'36"W 9.9' WITH PARTIALLY HEALED BLAZE AND VISIBLE SCRIBING, 20" FIR N 18'29"W WITH HEALED BLAZE, 3/4" IRON PIPE ALONGSIDE CORNER STONE N 17'W 0.5'. SET A U.S.F.S.S.S.M. IN A 18" X 36" M.O.S., BURIED IRON PIPE AND CORNER STONE ALONGSIDE MONUMENT BELOW GROUND LEVEL.
12 NE 1/16 COR. SEC. 35, SET A U.S.F.S.S.S.M. IN A 36" X 20" M.O.S., F.W.B. A 16" CEDAR N 10'30"E 36.7' MKD. NE 1/16 S 35 BT, A 14" W. FIR N 38'56"E 31.4' MKD. NE 1/16 S 35 BT.
13 W 1/16 COR. SEC'S. 26 AND 35, SET A U.S.F.S.S.S.M. IN A 30" X 12" M.O.S., F.W.B. A 36" P. PINE S 57'07"E 108.5' MKD. W 1/16 S 35 BT, A 8" B. OAK N 75'01"W 19.6' MKD. W 1/16 S 26 BT.
14 1/4 COR. SEC'S. 26 AND 35, FOUND A U.S.F.S.S.S.M. IN A 8" X 36" M.O.S. SET IN 1983 BY L.S. 5287 (PER 7/13 R.S.), A 27" P. PINE N 35'E 46.2', A 9" CEDAR S 57'18"W 45.2', A 8" CEDAR S 13'49"W 28.6'.
15 E 1/16 COR. SEC'S. 26 AND 35, SET A U.S.F.S.S.S.M. IN A 14" X 36" M.O.S., F.W.B. A 14" D. FIR S 75'34'E 55.2' MKD. E 1/16 S 35 BT, A 15" D. FIR S 26'04'E 53.5' MKD. E 1/16 S 35 BT.
16 CN 1/16 COR. SEC. 35, CORNER POINT FALLS IN LOOSE ROCK SLIDE IMPRACTICAL TO MONUMENT, F.W.B. A 10" W. FIR S 77'32"E 50.0' MKD. CN 1/16 S 35 BT, A 36" D. FIR N 4'28'E 76.1' MKD. CN 1/16 S 35 BT. SET R.M.'S A 24" ALUMINUM ROD WITH CAP, STAMPED WITH APPROPRIATE MARKINGS, S 87'20'28"E 169.56' FROM THE COR., AND 3 1/2" DIA. TABLE CONCRETED IN ROCK, STAMPED WITH APPROPRIATE MARKINGS, S 42'34'25"E 80.09' FROM THE COR.
17 SEC. COR. SEC'S. 26, 27, 34 AND 35, FOUND A U.S.F.S.S.S.M. IN A 34" X 30" M.O.S. SET IN 1983 BY L.S. 5287 (PER 7/13 R.S.), A 21" D. FIR N 0'09'W 23.4', A 16" P. PINE S 26'20'E 30.6', A 5" B. OAK S 47'02'W 47.9'.
18 1/4 COR. SEC'S. 34 AND 35, FOUND A STANDARD B.L. M. BRASS CAP MONUMENT SET IN 1973, F.W.B. A 13" D. FIR S 83'W 8.4' WITH OPEN FACE, BT VISIBLE, A 7" B. OAK N 11'E 27.5' WITH HEALED FACE AND BT-TAG, A 7" D. FIR S 5'E 25.8' WITH HEALED FACE AND BT-TAG.

CORNER

- 19 1/4 COR. SEC. 35 ONLY, (REC. 13" X 8" X 4" SLATE STONE) FOUND A 2 1/2" ALUMINUM CAPPED MONUMENT IN A 30" DIA OLD EMBEDDED M.O.S. SET BY CAF IN 1976 WITH A 15" X 9" X 4" STONE FAINTLY MARKED ALONGSIDE, F.W.B. A 33" DEAD STANDING PINE SNAG S 42'22" W 8.7' WITH OPEN BURNED OUT BLAZE AND ILLEGIBLE SCRIBING (REC. 30" P. PINE S 44'W 11 LKS.)



DETAIL A NO SCALE

RECORD OF SURVEY

FOR THE UNITED STATES FOREST SERVICE IN SECTIONS 26 AND 35, T. 26 N., R. 2 E., M. D. M., IN THE UNINCORPORATED AREA OF PLUMAS COUNTY, STATE OF CALIFORNIA.

ROBERT GRAUBERGER L.S. 5287

OCTOBER 1984 SHEET 2 OF 2