

LEGEND

- - AS NOTED, & DESCRIBED.
- - FD. 2 1/2" BRASS CAP SET BY B.L.M.
- ⊙ - FD. 2 1/2" BRASS CAP MKD. R.C.E. 22148.
- ⊖ - FD. 2 1/2" BRASS CAP MKD. L.S. 3621.
- - FD. 1" I.P. W/TAG MKD. R.C.E. 22148.
- - SET 3" U.S.F.S. ALUM. MON. MKD. L.S. 4776.
- ⊕ - SET 3 1/2" ALUM. CAP ON 1/2" ROD 8 FT. IN LENGTH MKD. L.S. 4776.
- - SET 3" ALUM. CAP ON 1/2" ROD 1 FT. IN LENGTH ON BOULDER, MKD. L.S. 4776.
- ⊙ - FD. 3" U.S.F.S. ALUM. MON. MKD. R.C.E. 22148.
- (1) - PER 1 R.O.S. 113.
- [] - PER 4 R.O.S. 75.
- () - PER 4 R.O.S. 112.
- <> - PER 5 R.O.S. 128.
- { } - PER 6 R.O.S. 19.
- ⊞ - PER 2 R.O.S. 98.
- < - PER G.L.O.
- LINES MARKED TO U.S.F.S. STDS.

31	32	33	34	35	36
6	5	4	3	2	1
7	8	9	10	11	12
18	17	16	15	14	13
19	20	21	22	23	24
30	29	28	27	26	25

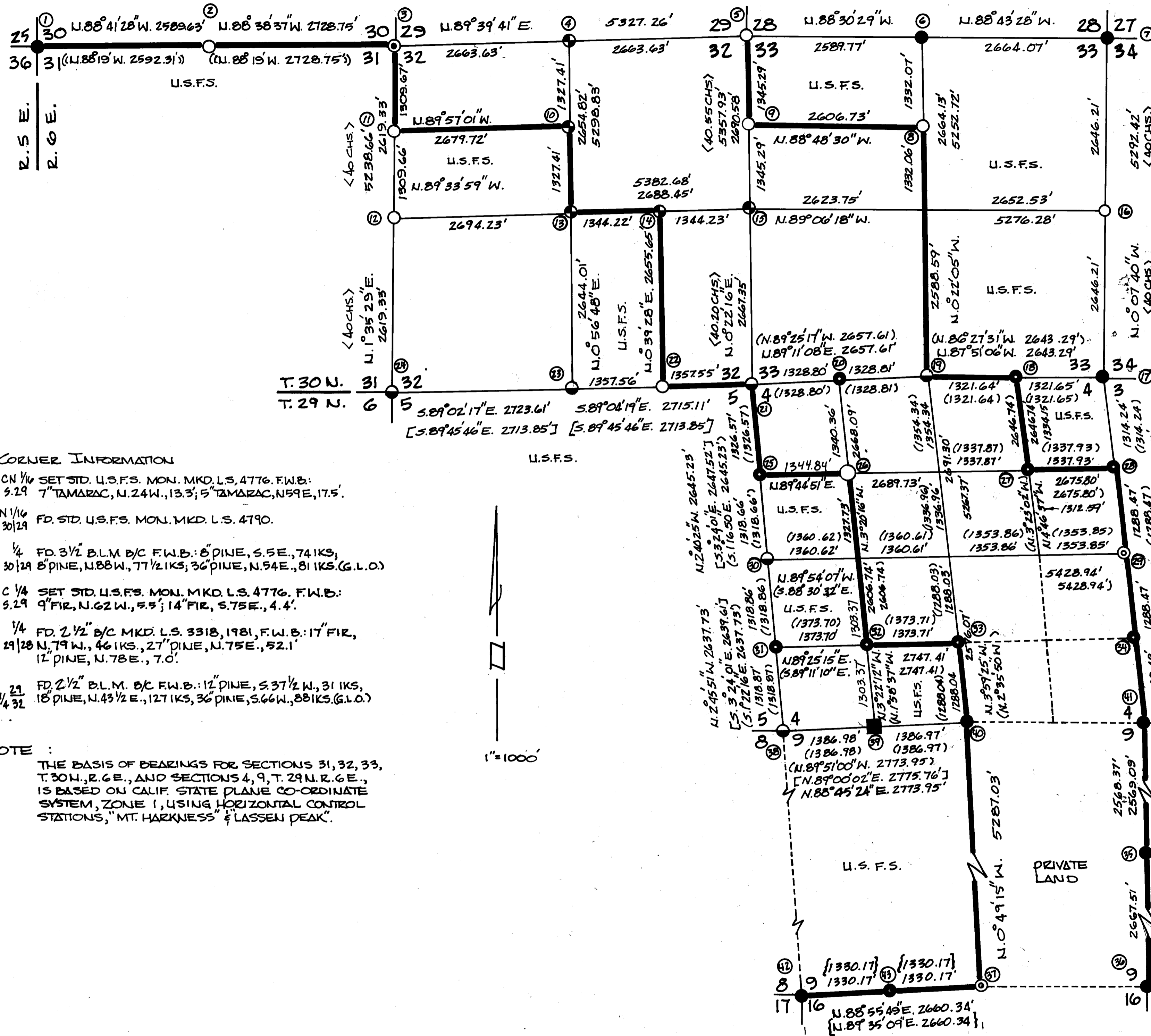
VICINITY MAP (U.S.)
T. 29 & 30 N. R. 6 E.

RECORD OF SURVEY
U.S.D.A. FOREST SERVICE
CONTRACT NO 53-9158-362

BEING A SURVEY OF SECTIONS 4, 9, 16, 18, 19, 29,
T. 29 N. R. 6 E., M.D.M., AND SECTIONS 31, 32, 33,
T. 30 N. R. 6 E., M.D.M., SITUATED IN THE UN-
INCORPORATED TERRITORY OF PLUMAS
COUNTY, CALIFORNIA.

BY
VERNON A. KALINOWSKI
L.S. 4776

2410 BEVERLY DR. REDDING, CALIF.
SHEET 2 OF 3



CORNER INFORMATION

- ⊕ CN 1/4 SET STD. U.S.F.S. MON. MKD. L.S. 4776. F.W.B.:
S. 29 7" TAMARAC, N. 24 W., 13.3'; 5" TAMARAC, N. 59 E., 17.5'.
- ⊕ N 1/4
30/29 FD. STD. U.S.F.S. MON. MKD. L.S. 4790.
- ⊕ 1/4 FD. 3 1/2" B.L.M. B/C F.W.B.: 8" PINE, S. 5 E., 74 IKS,
30/29 8" PINE, N. 88 W., 77 1/2 IKS; 36" PINE, N. 54 E., 81 IKS. (G.L.O.)
- ⊕ C 1/4 SET STD. U.S.F.S. MON. MKD. L.S. 4776. F.W.B.:
S. 29 9" FIR, N. 62 W., 5.9'; 14" FIR, S. 75 E., 4.4'.
- ⊕ 1/4 FD. 2 1/2" B/C MKD. L.S. 3318, 1981, F.W.B.: 17" FIR,
29/28 N. 79 W., 46 IKS.; 27" PINE, N. 75 E., 52.1'
12" PINE, N. 78 E., 7.0'.
- ⊕ 1/4 29
4/32 FD. 2 1/2" B.L.M. B/C F.W.B.: 12" PINE, S. 37 1/2 W., 31 IKS,
18" PINE, N. 43 1/2 E., 127 IKS; 36" PINE, S. 66 W., 88 IKS. (G.L.O.)

NOTE:
THE BASIS OF BEARINGS FOR SECTIONS 31, 32, 33,
T. 30 N., R. 6 E., AND SECTIONS 4, 9, T. 29 N. R. 6 E.,
IS BASED ON CALIF. STATE PLANE CO-ORDINATE
SYSTEM, ZONE 1, USING HORIZONTAL CONTROL
STATIONS, "MT. HARKNESS" & "LASSEN PEAK".

1" = 1000'