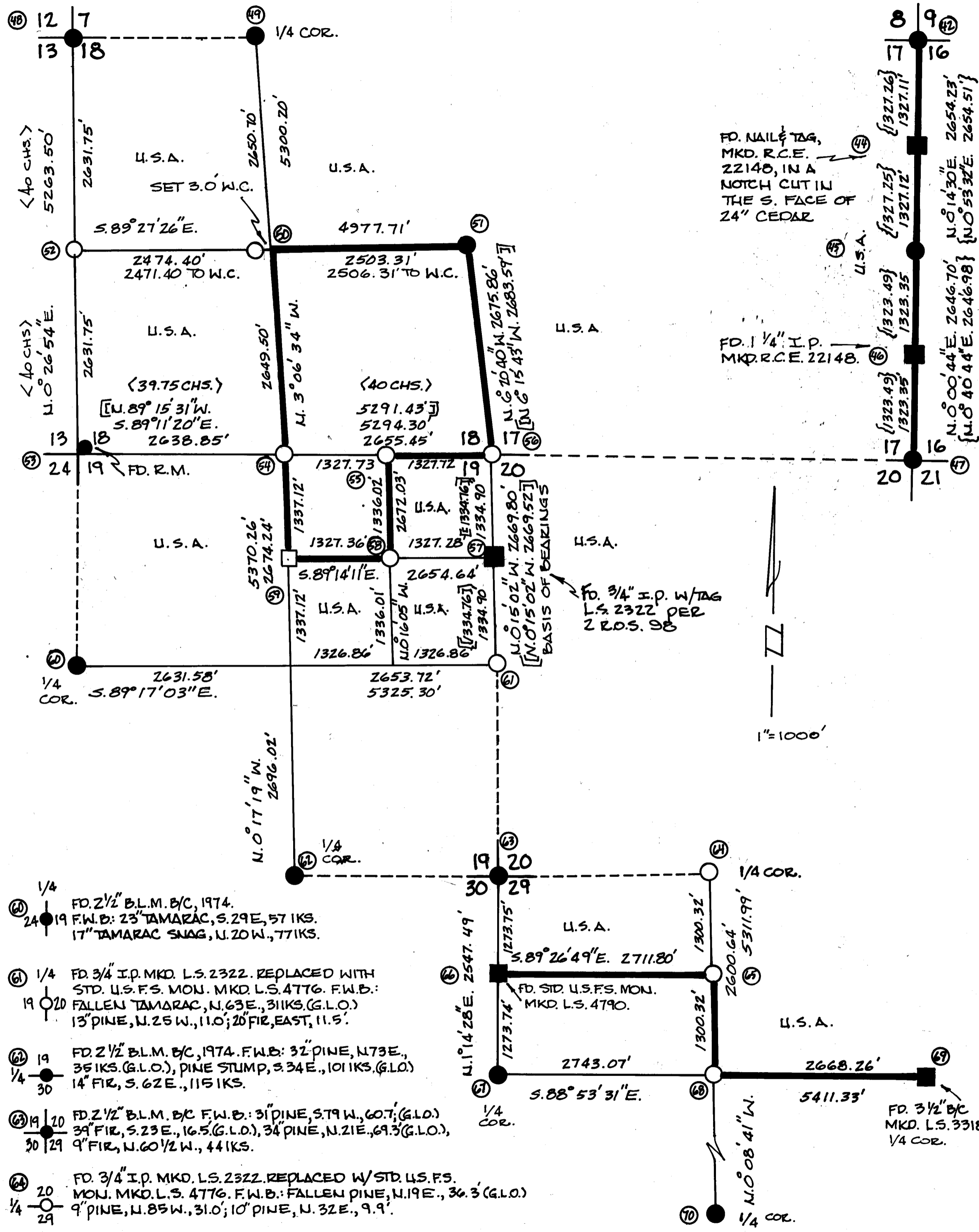


CORNER INFORMATION

- ⑤ FD 2 1/2" B.L.M. B/C 1974. F.W.B.:  
4" CEDAR, S. 29 E., 14 1/2 IKS.  
17 CEDAR, N. 70 W., 47 IKS.
- ⑬ 5.1/16 FD 1 1/4" I.P. MKD R.C.E. 22148. F.W.B.:  
10" PINE, N. 64 E., 26.4'  
10" PINE, N. 63 W., 26.9'
- ⑰ FD 2 1/2" B.L.M. B/C, 1974. F.W.B.:  
30" PINE, N. 35 E., 141 IKS. (G.L.O. 1870)  
38" PINE, S. 56 E., 21 IKS. (G.L.O. 1870)  
20" PINE STUMP, S. 88 W., 19 IKS. (G.L.O.)  
12" FIR, N. 79 W., 14 IKS.  
9" FIR, S. 33 E., 34 IKS.
- ⑲ FD 2 1/2" B.L.M. B/C, 1974. F.W.B.:  
46" PINE, N. 2 E., 46.2'  
36" PINE, N. 53 W., 52.5'  
6" FIR, S. 76 W., 35.0'  
9" FIR, N. 59 W., 39.6'  
14" FIR, S. 34 E., 29.0'  
22" FIR, N. 75 1/2 E., 21.1'
- ⑳ 7 FD 2 1/2" B.L.M. B/C, 1974. F.W.B.:  
36" PINE SNAG, S. 45 W., 3.3' (G.L.O.)  
5" FIR, S. 5 E., 32.3'  
12" FIR, N. 63 1/2 E., 24.4'
- ㉑ SET STD. U.S.F.S. MON. MKD. L.S. 4776 (W.C.)  
W.C. F.W.B.: 6" PINE, S. 75 E., 16.5'  
C 45.1814" CEDAR, S. 14 E., 26.0'
- ㉒ 1/4 FD 2 1/2" B.L.M. B/C, 1974. F.W.B.:  
30" FIR, N. 73 E., 37 IKS. (G.L.O.)  
26" FIR, N. 63 1/2 W., 23 IKS. (G.L.O.)  
12" PINE, S. 56 E., 28 IKS.
- ㉓ 1/4 SET STD. U.S.F.S. MON. MKD. L.S. 4776.  
F.W.B.: 6" FIR, N. 56 W., 6.8'  
10" FIR, S. 52 E., 16.2'
- ㉔ FD 2 1/2" B.L.M. B/C REF. MON., 1974. F.W.B.:  
TRUE COR. S. 24 W., 56 IKS. (IN ROADBED.)  
13" PINE, N. 74 E., 136 IKS.  
11" PINE, S. 36 E., 55 1/2 IKS.  
9" PINE, S. 31 W., 98 1/2 IKS.  
R.M. 7" LODGEPOLE, N. 2 W., 77 IKS.
- ㉕ SET STD. U.S.F.S. MON. MKD. L.S. 4776  
F.W.B.: 9" FIR, N. 12 E., 19.9'  
12" FIR, S. 12 W., 43.5'
- ㉖ SET STD. U.S.F.S. MON. MKD. L.S. 4776.  
F.W.B.: 14" FIR, N. 70 W., 36.8'  
8" FIR, S. 32 W., 2.1'
- ㉗ FD 3/4" I.P. MKD. L.S. 2322. REPLACED WITH STD. U.S.F.S. MON. MKD. L.S. 4776. F.W.B.:  
8" FIR, N. 49 E., 21.3'  
16" FIR, S. 60 E., 8.3'  
6" FIR, N. 34 W., 17.1'  
9" FIR, S. 34 W., 15.1'
- NE 1/4 ㉘ FD 3/4" I.P. MKD. L.S. 2322. F.W.B.:  
27" LODGEPOLE, WEST, 15.9'
- SE 1/4 ㉙ SET STD. U.S.F.S. MON. MKD. L.S. 4776.  
F.W.B.: 10" FIR, N. 60 E., 9.4'
- SW 1/4 ㉚ SET 3 1/2" CAP ON 1/2" ROD MKD. L.S. 4776.  
F.W.B.: 30" PINE, N. 15 E., 116.6'



LEGEND

- - AS NOTED, & DESCRIBED.
- - FD 2 1/2" BRASS CAP SET BY B.L.M.
- ⊙ - FD 2 1/2" B/C MKD. R.C.E. 22148.
- ⊙ - FD 2 1/2" B/C MKD. L.S. 3621.
- - FD 1" I.P. MKD. R.C.E. 22148.
- - SET 3" U.S.F.S. ALUM. MON. MKD. L.S. 4776.
- ⊕ - SET 3 1/2" ALUM. CAP ON 1/2" ROD, 8 FT. IN LENGTH, MKD. L.S. 4776.
- - SET 3" ALUM. CAP ON 1/2" ROD, 1 FT. IN LENGTH, MKD. L.S. 4776.
- ⊙ - FD 3" U.S.F.S. ALUM. MON. MKD. R.C.E. 22148.
- (S) - PER 1 R.O.S. 113.
- [ ] - PER 4 R.O.S. 75.
- ( ) - PER 4 R.O.S. 112.
- <> - PER 5 R.O.S. 128.
- { } - PER 6 R.O.S. 19.
- [ ] - PER 2 R.O.S. 98.
- < > - PER G.L.O.
- LINES MARKED TO U.S.F.S. STDS.

NOTES:

- (1) THE BASIS OF BEARINGS FOR SECTIONS 18, 19, 29 IS THE BEARING, "N. 0° 15' 02" W." AS SHOWN ON THE NORTH HALF OF THE WEST LINE OF SECTION 20 PER 2 R.O.S. 98.
- (2) THE BEARING OF THE LINE BETWEEN SECTIONS 17 & 16 IS BASED ON CALIF. STATE PLANE COORDINATE SYSTEM, ZONE 1, USING HORIZONTAL CONTROL STATIONS "MT. HARKNESS" AND "LASSEN PEAK".
- (3) DIVIDE DISTANCES SHOWN BY 3.280833 TO OBTAIN METRIC EQUIVALENTS.
- (4) ALL REPLACED MONUMENTS WERE 3/4" I.P.'S AND WERE PLACED ALONG SIDE THE NEW MON.
- (5) BEARING TREES SCRIBED FOR THIS SURVEY ARE PER MANUAL OF INSTRUCTIONS.

RECORD OF SURVEY  
U.S.D.A. FOREST SERVICE  
CONTRACT No 53-9158-3-62

BEING A SURVEY OF SECTIONS: 49, 16, 18, 19, 29, T. 29 N. R. 6 E., M.D.M., AND SECTIONS: 31, 32, 33, T. 30 N. R. 6 E., M.D.M., SITUATED IN THE UNINCORPORATED TERRITORY OF PLUMAS COUNTY, CALIFORNIA.

BY  
VERNON A. KALINOWSKI  
L.S. 4776

2410 BEVERLY DR. REDDING, CALIF.  
SHEET 3 OF 3